



November 7, 2000

Chevron U.S.A. Production Company
P.O. Box 1150
Midland, TX 79702

Administrative Application For
Non-Standard Gas Well Location
Chevron USA Production Co.
G. C. Matthews #12
Surface Loc. 330' FSL & 990' FEL
Section 6. T20S. R37E
Monument Tubb West Pool
Lea County, New Mexico

NOV - 8 2000

State of New Mexico
Energy, Minerals & Natural Resources Dept.
Oil Conservation Division
Attn.: Mr. Michael Stogner
2040 South Pacheco
Santa Fe, New Mexico 87505

Dear Mr. Stogner:

This letter is in response to your letter dated October 26, 2000, (copy attached) concerning why well #12 was chosen for the Tubb recompletion.

Here is a recap of the process used to determine the proper well to recomplete into the Tubb formation in section 6. While reviewing Chevron's G. C. Matthews lease for production improvements or cost reduction ideas, we noticed the activity in Section 5 and 7 of T20S, R37E in the Tubb. At this time we decided to recomplete the #6 well. It is located 990' FEL and 1650' FSL of Section 6. Permits were obtained and the work was completed July 14, 2000 and the Tubb zone was tight. Proper treatment was not possible as we screened out on a fracture treatment and could not pump an acid stimulation at the desired rate. Production testing resulted in no fluid entry.

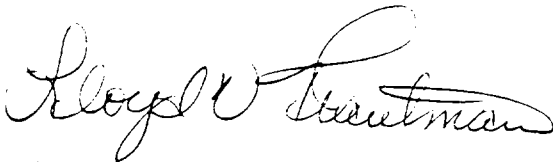
At this time we reviewed the rest of the wells in the SE/4; well bore schematics of the wells are attached for you to look at. Following is a well by well discussion of this review. Wells #3, 4, 8, and 11 are P&A'd, therefore not considered as a candidate well. Well # 5 has a 4 1/2" liner across the Tubb, but is another nonstandard location, 2310' FSL and 2310' FEL. Well #2 has a 4 1/2" liner cemented in and would have to be deepened about 2600'. This small size liner would cause longer time to drill, more costs and would limit the completion tool selection and production that could be obtained from the well. Therefore, wells #2 and 5 were not considered as preferred candidates. Well #10 has 7" casing and would have to be deepened about 800', and is at a non-

standard location at 1650' FSL and 2310' FEL. Well #7 has 5 1/2" casing and is a non-standard location at 990' FSL and 330' FEL. Well #9 has 5 1/2" casing at 5250' and is at a standard location, 660' FSL and 1650' FEL. Well #1 has 7" casing at 3714' and would have to be deepened about 2600' and is a standard location at 660' FSL and 1980' FEL. Well #12 has 7" casing at 5700' and would have to be deepened about 800' and is at a non-standard location.

Summarizing the details above, the P&A'd wells and the wells with 4 1/2" casing or liners were not considered to be viable candidates, so wells #3, 4, 8, 11, 5, and 2 were put aside. Of the wells with 5 1/2" and 7" casing, the 7" casing is the preferred size as it allows us to run 4 1/2" casing as opposed to 3 1/2" casing. The increased casing size allows us to run more conventional tools in the well for completion. The cost to drill a 4 1/2" hole as compared to a 6 1/8" hole would be increased as we estimate an additional 4-5 days to drill to TD with the smaller hole. This makes wells #1, 10, and 12 the most desirable candidates. Of these three, well #12 was decided upon. Well #10 was in a nonfavorable location based upon the results of well #6, and #1 required an additional 1800' of hole to be drilled, which was estimated to take an additional 4-5 days and cost an additional \$30,000 - \$40,000. Well #12 also allows Chevron to protect the reserves on our lease from being drained by a well 330' from the lease line in a non-standard 160 acre standup proration unit.

Attachments include: wellbore schematics of Chevron's wells, copy of OCD letter to Chevron dated October 26, 2000, Tubbs structure map, and a map of the G. C. Matthews lease. If you have any questions or require any further information concerning this information, please contact me at (915) 687-7152.

Sincerely,



Lloyd V. Trautman
Sr. Petroleum Engineer
New Mexico Area

lvt
Attachments

cc: NMOCD -- Hobbs, NM
J. K. Ripley
T. R. Denny
L. V. Trautman
R. M. Vaden
Central Files

WELL DATA SHEET

FIELD: Eunice-Monument

WELL NAME: G. C. Matthews #1

FORMATION: Grayburg/San Andres

LOC: 660' FSL & 1980' FEL, Unit O
TOWNSHIP: 20S
RANGE: 37E

SEC: 6
COUNTY: Lea
STATE: NM

GL:
KB to GL:
DF to GL:

CURRENT STATUS: SI
API NO: 30-025-05942
REFNO: FA7064

Date Completed: 5/36

Initial Production: 108 bopd, 4900 mcfpd

Completion Data:

Subsequent Operations:

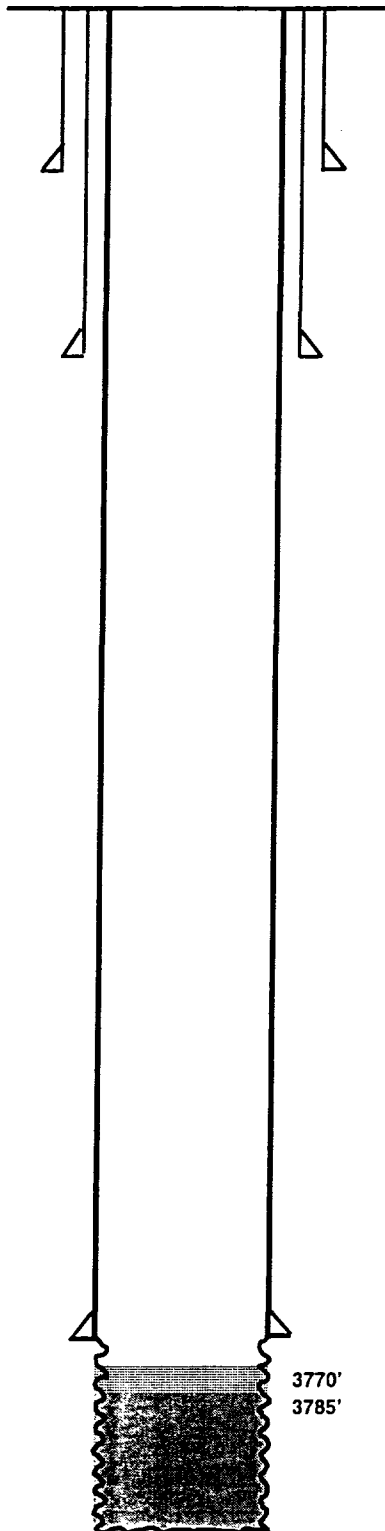
5/56 -- PB to 3785' w/Calseal. PB to 3770' w/hydromite (Grayburg). 73 bopd, 76 bwpd.

3/94 -- SI

13" Csg
Set @ 223' w/250 sx cmt.
Circ?

9 5/8" Csg
Set @ 2317' w/600 sx cmt.
Circ?

7" Csg
Set @ 3714' w/145 sx
TOC ?



TD 3884'

Well Name: G. C. Mathews #2Field: EumontLocation: 1980' FSL & 1980' FELSec: 6Formation: EumontTownship: 20SCounty: LeaAPI #: 30-025-12721Range: 37EState: NMChevno: FG7195GE: 3576 KDB to GE: _____ DF to GE: _____

Spud Date: _____

Completion Date: Jun-36Initial Formation: Grayburg

Interval Completed: From: _____ To: _____

Initial Production: BOPD: 280

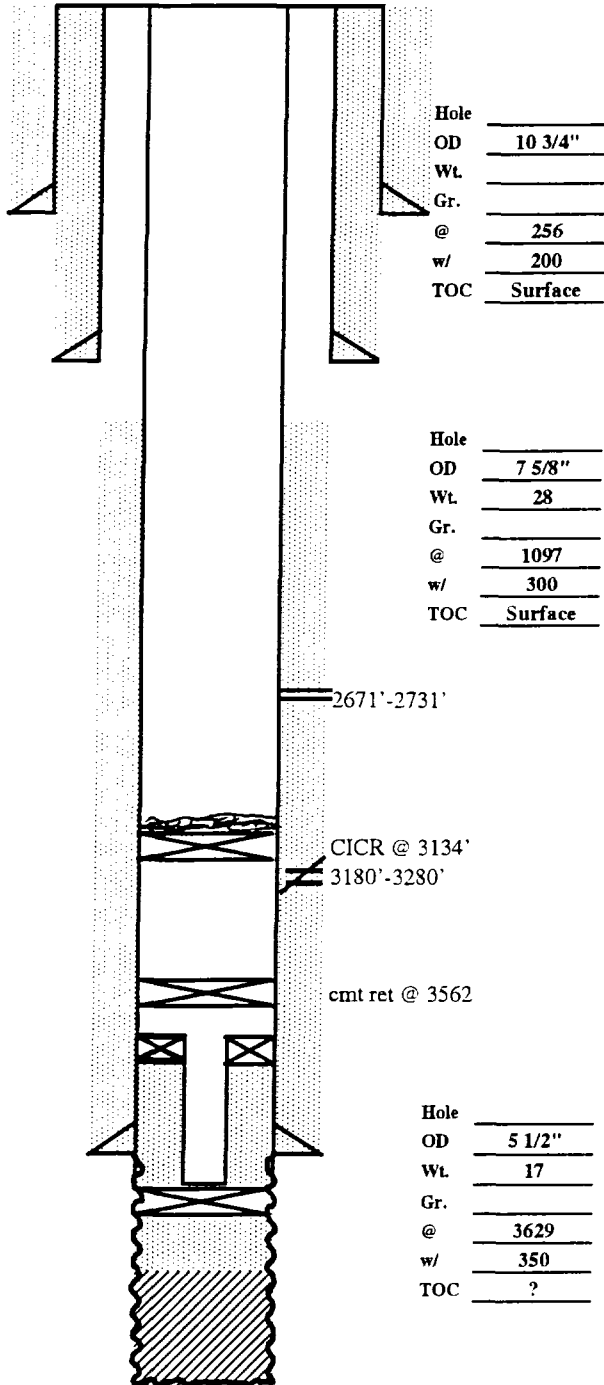
MCFPD: _____

BWPD: _____

Completion Data:

Acid w/ 7600 gals

Subsequent Workovers/Reconditionings/Repairs:

1/56 PB to 3825' w/ hydromite.2/56 Set cmt retainer @ 3774'. Sqz w/ 145 sx cmtbelow retainer and spot 37 sx cmt on top of retainerClean out to 3770'. Underream hole to 7" from3630'-3742'. Run 4 1/2" liner. Top @ 3570'. Set @3770'. Cmt w/ 80 sx cmt. Perf 3736'-40'. Acid w/250 gals 15% HCl. Perf 3710'-27'. Set cmt ret @3562'. Sqz w/ 250 sx cmt. Perf Eumont (Penrose)3180'-3280'. Acid w/ 500 gal mud acid.4/91 Acid w/ 300 gals 15% NEFE.10/5/1998 Set CICR @ 3134'. Sqz w/ 300 sx cmt.Cap CICR w/ 35' cmt. Perf 2671'-2731'. Acid w/45 bbls 15% NEFETD = 3885

Additional Remarks or Information:

WELL DATA SHEET

FIELD: Eunice-Monument

WELL NAME: G. C. Matthews #3

FORMATION:

LOC: 660' FSL & 660' FEL, Unit P
TOWNSHIP: 20S
RANGE: 37E

SEC: 6
COUNTY: Lea
STATE: NM

GL: 3567'
KB to GL: 6.5'
DF to GL:

CURRENT STATUS: P&A
API NO: 30-025-05944
REFNO: FA7066

Date Completed: 9/15/36

Initial Production: 148 bopd, 1126 mcfpd

10 3/4", 32# Csg
Set @ 216' w/200 sx cmt.
Circ?

7 5/8", 22# Csg
Set @ 2345' w/450 sx cmt.
Circ?

Completion Data:

8/36 -- Ac dz w/2000 gals 50-50.

9/36 -- Ac dz w/3000 gals 14%.

Subsequent Operations:

8/40 -- Ac dz w/500 gals 15%.

10/40 -- Ac dz w/1000 gals 15%.

6/53 -- Unable to retrieve fish in hole (Otis blind choke).
Dumped pea gravel @ 3871'-28', Hydromite @ 3828'-26',
pea gravel @ 3826'-25'.

12/54 -- Set cmt retainer @ 3739' w/125 sx. Perf 3700'-38'
w/4 1/2" JHPF. Ac dz w/500 gals 15% NE.

4/55 -- Plug from 3723'-39' w/24 gals Hydromite.

3/77 -- Set BP @ 3680', cap w/4 sx cmt. Set cmt plug over
top of salt f/1030'-1130 w/21 sx; cmt plug f/50' to surface w/6
sx.

7/79 -- Drill out surface and cmt plug. Perf 3381'-3383',
3435'-3437', 3498'-3500', 3532'-3534', & 3594'-3596' w/2 1/2"
JHPF. Ac dz w/4000 gals 15%.

12/79 -- Set CIBP @ 3350', cap w/6 sx cmt. Set cmt plug
f/1050'-1150', and plug f/90' to surface. Well P&A'd.

CIBP @ 3350'

3381'

3596'

CIBP @ 3680'

5 1/2", 17# Csg
Set @ 3744' w/200 sx cmt.
Circ?

Hydromite & pea gravel
3825'-3871'

Fish in hole

TD 3891'

WELL DATA SHEET

FIELD: Eunice Monument

WELL NAME: G. C. Matthews #4

FORMATION: Grayburg

LOC: 1980' FSL & 660' FEL

SEC: 6, Unit I

GL: 3567'

CURRENT STATUS: TA'd

TOWNSHIP: 20-S

COUNTY: Lea

KB to GL: 6'

API NO: 30-025-05945

RANGE: 37-E

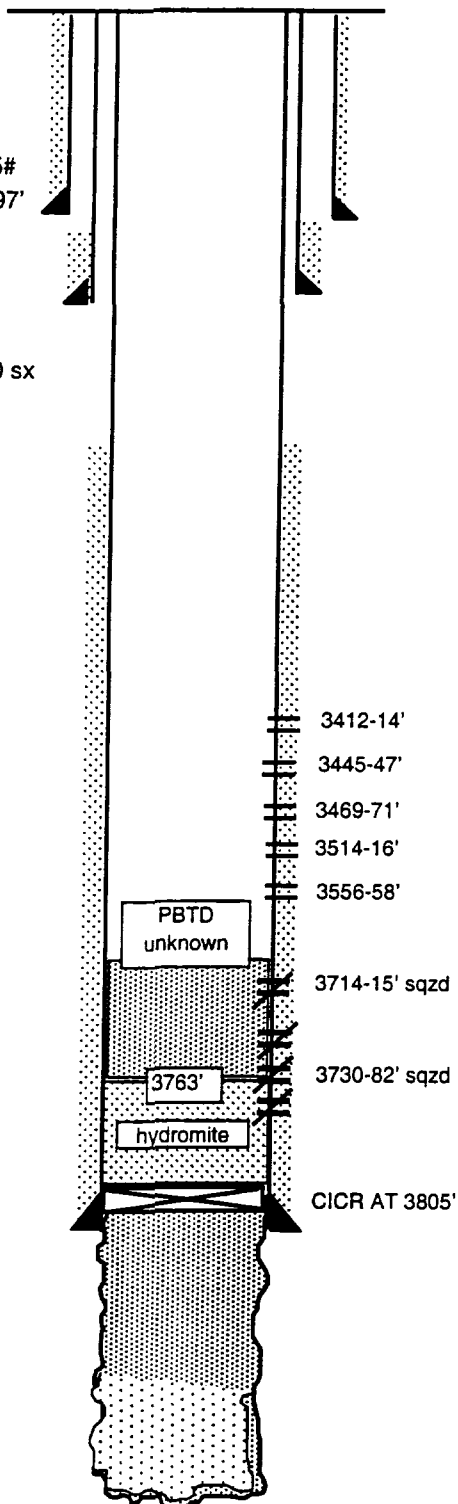
STATE: NM

CHEVNO: FA7067

Date Completed:	#####
Initial Production:	715 bopd, 1578 mcf/d
Initial Formation:	Grayburg
FROM:	3815'
TO:	3897'

10 3/4" OD, 32.75#
Sur. pipe set at 297'
w/ 200 sxs cmt.

7 5/8", 36# csg
set at 2342' w 400 sx



5 1/2" OD17#
set at 3815'
cmt w/ 200 sx

Well History

5/52 PB w/ hydromite to 3858', Install gas lift. IP 65 BO, 29 BW

3/57 Ran CICR set at 3805 Sqz OH w/ 213 sx. Perf 3730-82' w 4 JSPF. Acdz w/ 250 gal. Well flowed. PB to 3763' with Hydromite & Calseal. Treat 3730-63' w/ 7476 gal lease crude w/ 1 ppg sd. PB to 3720' w/ hydromite. Perf 3714-15' w/ 8 JSPF. Set CICR at 3690'. DO to 3720'. Csg would not test. Set CICR at 3685'. Pump 500 gal Cealment. DO cmt to 3720'. test perms at 3715 to 500 psi, ok. DO hydromite and sand to 3763'. Swab well, kicked off. [Assume that perms 3730-63' open because of being covered w/ sand and hydromite was used as a cap on the sand.]

5/58 Sqz perms 3730-63 w/ 87 sx cmt. TA'd

4/60 P&A w/ Aquagel mud. Spot 10 sx cmt at top of 5 1/2" csg. Set marker.

7/69 Re-enter. CO to 3675'. Spot 15% Acid. Perf 3412-14', 3445-47', 3469-71', 3514-16', 3556-58', w/ 2 JSPF. Acdz w/ 3000 gal 15% ND Acid. IP 1 BO ? Gas

8/79 Note in file that well has been TA'd. No details given.

FORMATION TOPS:

Rustler 1080
T/ Salt 1120
B/ Salt 2270
Yates 2380
Queen 3036
Grayburg 3680

Chevron



WELL DATA SHEET

FIELD: Monument

WELL NAME: G. C. Matthews # 5

FORMATION: Abo

LOC: 2310' FSL & 2310' FEL
TOWNSHIP: 20-S
RANGE: 37-E

SEC: 6, Unit I
COUNTY: Lea
STATE: NM

GL: 3559'
KB to GL: 10.4'

CURRENT STATUS: SI
API NO: 30-025-05946
CHEVNO: FA7068

Date Completed:	06/22/1951
Initial Production:	960 BO, 0 BW, 570 MCF
Initial Formation:	Paddock/Blinebry
FROM:	5650'
TO:	5700'

13 3/8" OD, 48#, H-4C
Sur. pipe set at 326'
w/ 325 sxs cmt.
Circ. to surf.

9 5/8", 36# csg, 8rd, J-55
set at 2650' w 1500 sx
TOC at 950' by TS

Grayburg
Squeezed
3386'-88'
Squeezed
3437'-3612'

Paddock
Squeezed
5139'-5208'

TOL 5333'

Blinebry, Squeezed
5576'-5602'
Squeezed
5650'-5700'

Existing
6862'-6986'

7045'
through
7252'

7" OD 23#, 8 rd, J-55
set at 5779'
cmt w/ 650 sx
TOC at 2660' by TS

1 1/2" OD 11.6#, K-55
liner set at 7398'
w/ 250 sx. TOL at 5333'

Well History

- 5/51 Spud, Paddock/Blinebry Test, TD 5780', PBTD 5745'
- 3/56 Installed Pumping Unit, 103 BO, 157 BW
- 11/60 TA'd well
- 6/61 Test Blinebry. Set CI @ 5640'. Squeezed perms 5650' to 5700' in 7" CSG. Perf 4 SPF 5576' - 78', 5584'-86', 5600'-02'. Treated w/ 750 gal 15% NEA, using 15 7/8" RCNB. PBTD 5736'. Prod. 182 BO, 0 BW, 108 MCF.
- 4/67 Acidz w/ 1000 gal 28% NEA. Before 22 BO, After 33 BO.
- 8/67 Installed Pumping Equipment.
- 5/68 Acidz. 5000 gal 15%. No change in prod.
- 5/69 Test Grayburg. Set BP on WL @ 5500'. Dumped 2 sxs CMT. Perf. 3610'-12', 3546'-48', 3506'-3508', 3466'-68' & 3437'-39'. Acidz w/ 4000 gal 15% NE acid, 4 bpm, Pmax 3600 psi.
- 6/72 Dual Grayburg with Paddock. Perf 7" CSG w/ 2, 1/2" JHPF @ 5139'-43', 5172'-76', 5186', 92', and 5204'-08'. Acidz w/ 3000 gal 15% NE acid. Acidz perms again w/ 3500 gal 15% NE acid. Ran long string w/ RKR @ 5050', end of TBG @ 5116'. Short String @ 3403'.
- 6/75 TA'd Paddock.
- 8/76 Pulled both strings & TA Paddock w/ BP @ 5050'. TA Grayburg w/ RBP @ 3412'. Perf 7" CSG w/ 4, 1/2" JHPF @ 3386'-88'. Acidz w/ 1000 gal 15% NE acid. Put on prod.
- 10/77 Squeeze Paddock, 5139'-5208' w/ 150 sxs CI "C". Squeeze Graybury, 3326'-3612' w/ 300 sxs CI "C". C/O to 5780' & squeeze Blinebry, 5576'-5602' w/ 400 sxs CI "C". Deepen with 6 1/4" bit to 7400'. Set 4 1/2" liner with top at 5333', bottom at 7398'. Perf Abo at 7045'-47', 7079'-81', 7119'-21', 7149'-51', 7196'-98', 7216'-18', 7250'-52'. Acidz w/ 12,000 gal 15% HCl at 15 BPM. ISIP 4450 psi. 15 MIN SI 4000 psi. IPP = 8 BOPD, 9 BWPD.
- 10/87 Perf 7159', 55', 46', 44', 40', 38', 34', 32', 09', 7072', 71', 70', 62', 60' with 1 SPF. Acidz with 5500 gals 20% HCl. (appears all pay was acidized) Run Rods & Pump. Off Report - 9 BO, 9 BW, 17 MCF.
- 3/88 Acid Frac 7045'-7252' with 30,000 gals XL Gel, 15,000 gals 20% Gelled NEFe, 3750 gals 20% Slick NEFe, 12,000 gals non-XL Gelled 8.6 lb BW and 288,000 scf N2. Rate of 12 bpm, 4540 psi Pmax. Run Pump Eq. Before - 2 BO, 1 BW, 19 MCF. After - 1 BO, 4 BW, 99 MCF.
- 2/90 Production less than 1 BOPD, 0 BWPD. Moved 228 Lufkin pumping unit. SI.

WELL DATA SHEET

FIELD: Monument

WELL NAME: G. C. Matthews #6

FORMATION: Tubb

LOC: 1650' FSL & 990' FEL
TOWNSHIP: 26S
RANGE: 37E

SEC: 6
COUNTY: Lea
STATE: NM

GL: 3570'
KB:
DF:

CURRENT STATUS: SI
API NO: 30-025-05947
REFNO: FA7069

Date Completed: Nov-51
Initial Formation: Blinebry

14" csg set at 310'
 Cmtd w/ 300 sx.
 Cmt circ to surface.

9 5/8" 36# J-55 csg set at 2631'
 Cmtd w/ 1408 sx.
 Cmt circ to surface.

Grayburg

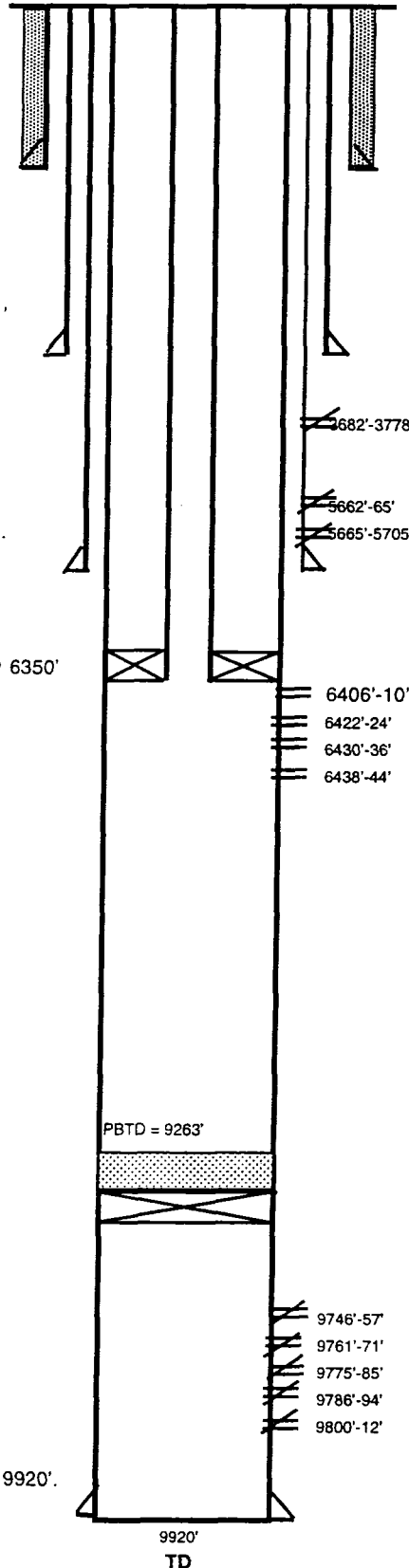
Blinebry
 7" 20&23# J55 csg set at 5733'.
 Cmtd w/ 650 sx.
 TOC @ 2820'

Arrow set 1-X pkr @ 6350'

Tubb

Ellenberger

4 1/2" 9.5&11.6# J-55 csg set at 9920'.
 Cemtd w/ 515 sx.
 TSITOC @ 2730'.



Completion Data: Perf 5665'-5705' w/ 4 spf. Acid w/ 1000 gals 15% NEA. IP 2040 BOPD 0 BWPD.

Subsequent Operations:

1956- PB to 5685'. Acid w/ 1000 gal 15% NEA.

Aug 1956- Sqz perms 5662'-5674'. Perf Grayburg 3705'-3778'. Acid w/ 1000 gals.

June 1959- Sqz 3725'-78'. Perf 3682'-84' and 3700'-02'. Acid w/ 3000 gals 15% HCl.

July 1961- Deepened to 9920'. Ran and cmtd 4 1/2" csg to TD. Perf 9746'-57', 9761'-71', 9775'-85', 9786'-94', and 9800'-12'. IP'd 1.85mmcfpd, FTP 2485 psi.

Feb 1995- TA'd well. Set CICR @ 9641'. Cap w/ 25 sx. PBTD 9263'.

July 2000- Perf Tubb 6406'-10', 6422'-24', 6430'-36', and 6438'-44'. Acdz w/2000 15% anti-sludge. Frac w/15,000 gals Spectra & 11,500# 16/30 sd. Screened out early; 6800# sd in formation & 2000# sd in tbg. C/O sd to 6650. Acdz 6406'-6444' w/2500 gals 15% anti-sludge, dropping 60 - 1.3 sg ball sealers.

WELL DATA SHEET

FIELD: Monument Paddock

WELL NAME: G. C. Matthews #7

FORMATION: Paddock

LOC: 990' FSL & 330' FEL, Unit P

SEC: 6

GL: 3558'

CURRENT STATUS:

TOWNSHIP: 20S

COUNTY: Lea

KB to GL:

API NO: 30-025-05948

RANGE: 37E

STATE: NM

DF to GL:

REFNO: FA7070

Date Completed: 5/10/53

Initial Formation: Blinebry

Initial Production: 292 bopd, 439 mcfpd, 0 bwpd

12 3/4" Csg
Set @ 291 w/350 sx cmt.
Circulated to surface.

8 5/8", 32#, J-55 Csg
Set @ 2522' w/3750 sx cmt
Circulated to surface.

Completion Data:

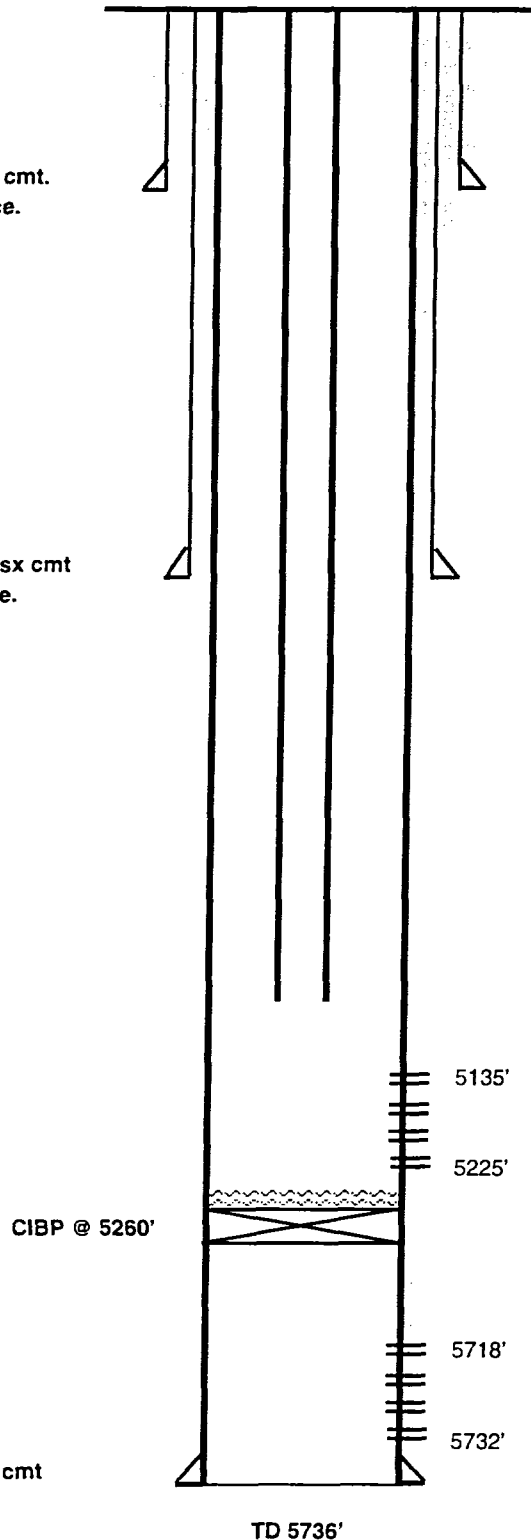
Perf 5718'-32' w/4 hpf.

Subsequent Operations:

2/54 -- Acdz Blinebry w/200 gals 15% HCL. 3 bopd, 298 bwpd.

3/54 -- Plug Blinebry. Set CIBP @ 5260', cap w/1 sk cmt.
Perf Paddock 5135'-5225' w/4 hpf. Flowed 366 bopd, 204 mcfpd.

10/68 -- Install rod pump equip. 123 bopd, 69 bwpd.



WELL DATA SHEET

FIELD: Monument

WELL NAME: G. C. Matthews #8

FORMATION: Blinebry

LOC: 990' FSL & 1650' FEL, Unit O
TOWNSHIP: 20S
RANGE: 37E

SEC: 6
COUNTY: Lea
STATE: NM

GL: 3561'
KB to GL: 13.7

CURRENT STATUS: SI
API NO: 30-025-05949
REFNO: FA7071

Date Completed: 7/53

Initial Production: 340 bopd, 649 mcfpd

13 3/8", 48#, H-40 csg
 Set @ 460' w/525 sx cmt.
 Circulated to surface.

8 5/8", 28#, H-40 Csg
 Set @ 2649' w/630 sx cmt.
 Circulated to surface.

7 7/8", 23#, J-55 Csg
 Set @ 3988' w/230 sx cmt.
 TOC @ 300' by TS

5 1/2", 15.5#, J-55 Liner
 Set @ 5719' w/71 sx cmt.
 TOC @ 3763'

TOL @ 3887'

CIBP @ 5600'

CIBP @ 5625'

TD 5720'

Completion Data:

Perf liner @ 5645'-5710' w/4, 1/2" JHPF. Acdz w/1000 gals 15% NE.

Subsequent Operations:

12/60 -- Install ppg equip.

10/64 -- Acdz w/500 gals 15% down csg. Perfs sealed off and acid stayed in well bore.

11/64 -- Acdz w/3000 gals 15%.

9/67 -- Ran CIBP & set @ 5625'. Dmp 10' cmt on top. Perf liner @ 5553'-55', 5568'-70', 5588'-90' w/2 1/2" JHPF. Spot w/500 15% NE acid. Acdz w/2000 gals 15%.

5/75 -- P&A well. Set CIBP @ 5600' w/40' cmt on top. Set plug f/3931'-3823' w/16 sx cmt. Set plug f/1134'-1026' w/20 sx cmt. Set plug f/54' to surface w/10 sx.

11/06/00

WELL DATA SHEET

FIELD: Monument

WELL NAME: G. C. Matthews #9

FORMATION: Paddock

LOC: 660' FSL & 1650' FEL, Unit O
TOWNSHIP: 20S
RANGE: 37E

SEC: 6
COUNTY: Lea
STATE: NM

GL: 3559'
KB to GL:
DF to GL:

CURRENT STATUS: SI
API NO: 30-025-05950
REFNO: FA7072

Date Completed: 7/54
Initial Formation: Paddock
Initial Production: 264 bopd, 128 mcfpd

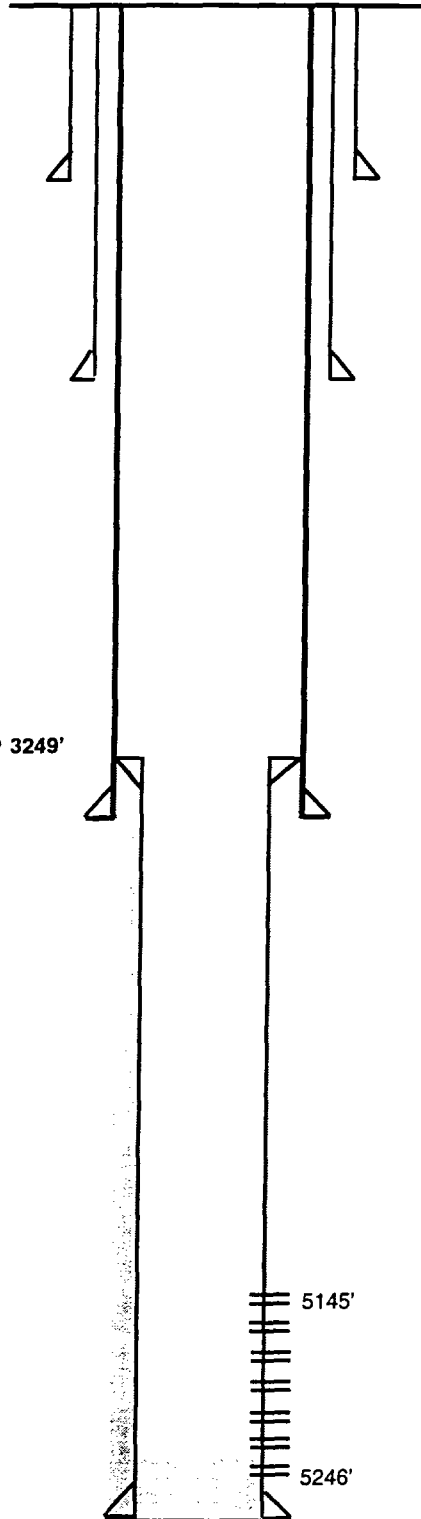
13 3/8", 48#, S-80 csg
 Set @ 295' w/325 sx cmt.
 Circulated to surface.

9 5/8", 36#, J-55 Csg
 Set @ 2340' w/1015 sx cmt.
 Circulated to surface

TOL @ 3249'

7 7/8", 26.4#, N-80/J-55 Csg
 Set @ 3498' w/170 sx cmt.
 TOC @ 35' by TS

5 1/2", 15.5#, J-55 Liner
 Set @ 5249' w/200 sx cmt.
 TOC @ 3429



Completion Data:
 Perf 5155'-5246'. Acdz w/1000 gals MCA (7.5%). Perf 5145'-5155' Acdz w/1000 gals 15% NEA.

Subsequent Operations:
 6/55 -- Plugback to 5228' w/hydromite. Acdz w/2000 gals 15% NEA.

1/66 -- Clean out to 5238'. Acdz w/1000 gals 15% NEA.

6/69 -- Acdz w/1000 gals 15% NEA.

2/76 -- Swedged out 7 5/8" csg @ 15'.

6/94 -- SI.

Rustler	1020'	Penrose	3200'
Base Salt	2150'	Grayburg	3413'
Yates	2365'	San Andres	3780'
7 Rvrs	2636'	Glorieta	5078'
Queen	3097'		

TD 5250'

Well Name: G. C. Mathews #10Field: Monument PaddockLocation: 1650' FSL & 2310' FELSec: 6Formation: PaddockTownship: 20SCounty: LeaAPI #: 30-025-05951Range: 37EState: NMChevno: FA7073GE: 3569 KDB to GE: _____ DF to GE: _____

Spud Date: _____

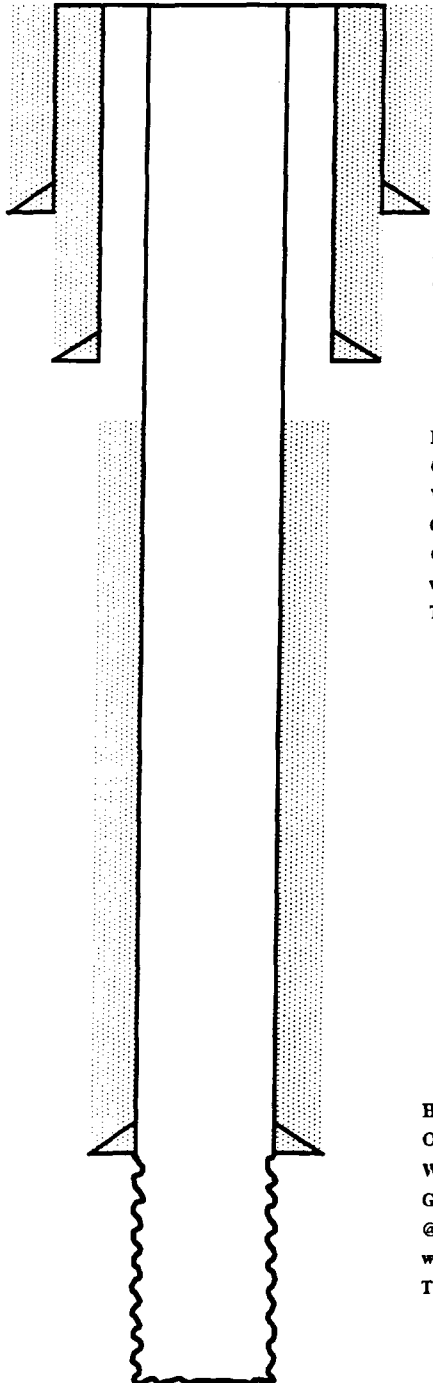
Completion Date: Aug-54Initial Formation: PaddockInterval Completed: From: 5149 To: 5250

Initial Production:

BOPD: _____

MCFPD: _____

BWPD: _____



Hole
OD 13 3/8"
Wt. _____
Gr. _____
@ 414
w/ 475
TOC Surface

Hole
OD 9 5/8"
Wt. _____
Gr. _____
@ 2899
w/ 1750
TOC Surface

Hole
OD 7"
Wt. _____
Gr. _____
@ 5149
w/ 310
TOC 3125' by TS

Completion Data:

Perf 5240'-44'. Acid w/ 500 gals.Acid 5149'-5250 w/ 500 gals.Perf 5228'-33'. Acid w/ 1000 gals 15% NE

Subsequent Workovers/Reconditionings/Repairs:

6/94 SITD = 5250'

Additional Remarks or Information:

WELL DATA SHEET

FIELD: Monument Blinebry

WELL NAME: G. C. Matthews #11

FORMATION: Blinebry

LOC: 2310' FSL & 990' FEL
TOWNSHIP: 20-S
RANGE: 37-E

SEC: 6, Unit I
COUNTY: Lea
STATE: NM

GL: 3558'
DF to GL: 12'

CURRENT STATUS: TA'd
API NO: 30-025-05952
CHEVNO: FA7074

Date Completed:	#####
Initial Production:	130 BOPD, no wtr
Initial Formation:	Paddock
FROM:	5150'
TO:	5230'

13 3/8" OD, 48#
 Sur. pipe set at 413'
 w/ 500 sxs cmt.
 circ. to surf.

9 5/8", 36# csg
 set at 2899' w 1900 sx
 TOC at 735' by TS

perf 3975 w/ 2
 holes, cmt w/
 275 sx, part of
 primary cmt
 job, TOC @
 2238' by TS

CIBP AT 5100'
 W/ 35' CMT

7" OD 23#, 8 rd, J-55
 set at 5234'
 cmt w/ 825 sx
 TOC at 2238' by TS

Perf
 5564-68'
 5573-77'
 5589-92'
 5602-06'
 SQZD w/ 200 sx

Paddock perms
 5150'-5230'
 Isolated w/ lnr
 and sqzd off.

CIBP AT 5640'
 W/ 35' CMT

perms
 5650' and
 5666'
 each with 3 holes
 in a plane

5" OD 14.8#, J-55 FJ
 Liner set at 5728'
 w/ 30 sx. TOL at 5193'

TD 5750'
PBTD 5730'

Well History

10/54 Perf. 5150-5230' w/ 4 JSPF. Acdz w/ 2500 gal 15% HCl. Flowed 1230 BOPD, no wtr

8/57 Plugged bacd to 5205' w/ hydromite. Acdz perms 5150-5205' w/ 4000 gal 15%. Flow 103 BO, 22 BWPD, GOR 8541.

6/59 ETP

6/62 Deepened w/ 6 1/8" bit from 5234' to 5750', now TD. Ran 5" OD Hydril 14.8#, J-55 FJ liner from 5728 to 5193' (TOL). Cmt w/ 30 sx. Circulated. Perf Blinebry 5564-68', 5573-77', 5588-92', 5602-06' w/ 2 JSPF. Attempted to acdz but communicated to liner top. Perf liner at 5550' & circulated cmt to liner top and sqzd. DO lnr & test to 2,000 psi. Acdz perms, swab 100% wtr. Sqzd perms 5564-5606' w/ 200 sx. Re-sqzd w/ 155 sx. DO to 5730, FBTD, test to 2,000 psi, OK. Perf 5650' and 5666' with 3 JH in a plane. Acdz w/ 500 gal. Flowed 221 BO in 10 hrs. Set Model 'D' pkr at 5635' on WL. Dual completed. Acdz Paddock w/ 500 gal 15%.

2/64 ETP Blinebry.

4/66 Acdz Paddock w/ 1000 gal

3/71 Acdz Paddock w/ 1000 gal.

5/79 Repair tbg leak. Acdz Paddock using RBP & pkr w/ 1500 gal 15%

7/82 Chemical Sqz Blinebry w/ Corrosion Inhibitor

2/83 Repair tbl leak & return to production

7/85 Sqzd Paddock perms twice w/ 300 sx. Removed Model 'D' pkr. Acdz Blinebry w/ 500 gal 15% NEFE HCl. Paddock P&A'd. Blinebry completion only.

FORMATION TOPS: Rustler 1035

T/ Salt 1070

B/ Salt 2190

Yates 2392

Queen 3065

Grayburg 3430

Glorieta (Paddock) 5098

Blinebry 5310

WELL DATA SHEET

FIELD: Eunice Monument

WELL NAME: G. C. Matthews #12

FORMATION: Yates

LOC: 330' FSL & 990' FEL
TOWNSHIP: 20S
RANGE: 37E

SEC: 6
COUNTY: Lea
STATE: NM

GL: 3556'
KB to GL: 11'
DF to GL:

CURRENT STATUS:
API NO: 30-025-05953
REFNO: FA7075

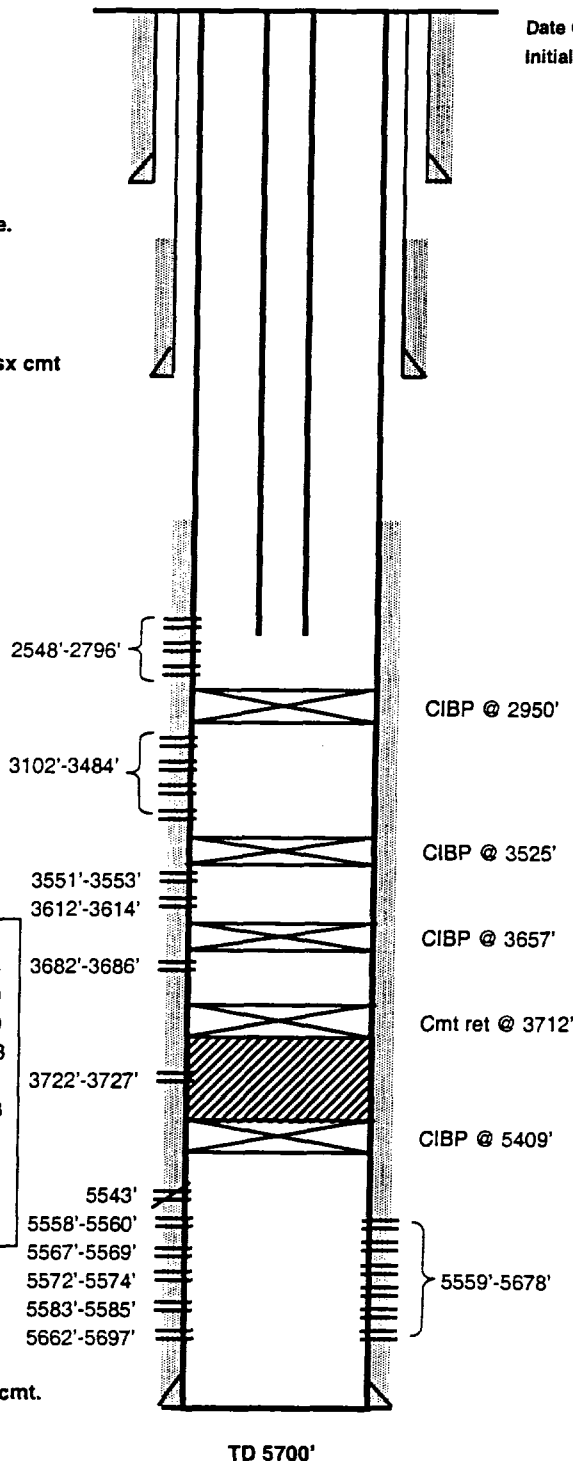
Date Completed: 10/26/54
Initial Formation:

13-3/8" OD, 48#
Surf Pipe set @ 408'
W/400 sx cmt
Circulated to surface.

9 5/8" OD, 36# Csg
Set @ 2899' w/1575 sx cmt
TOC @ 420' by TS.

Formation Tops	
Rustler	1025
T/Salt	1080
B/Salt	2040
Yates	2423
7-Rivers	2723
Queen	3093
Grayburg	3392
San Andres	3760
Glorieta	5070
Blaine	5658

7" OD, 20 & 23# Csg
Set @ 5699' w/400 sx cmt.
TOC @ 2100' by TS.



Completion Data:

Perf 7" csg @ 5662'-5697' w/4 1/2" JHPF. Acdz w/1000 gals 15% NE acid. Swb & well kicked off flowing.

Subsequent Operations:

08/61 CO 5626'-5697'. Acdz w/1000 gals 15% NEA.
07/62 Perf 5583'-5585', 5572'-5574', 5567'-5569', & 5558'-5560'. Acdz 5558'-5583' w/750 gals 15% NEA. Swb dry, rec 20 bw & no oil. Acdz w/3000 gals 15% NEA. Swb 90 bw, no oil. Set CIBP @ 5550' & perf 5543'. Set ret @ 5500' & obtain 5000# sqz. Drill out BP & ret. Found bottom @ 5680'. Perf 5661'-5678' w/4 holes in following intervals: 5661'-62', 5665'-66', 5669'-70', 5673'-74', 5677'-78' & flat plans @ 5584', 5573', 5568', & 5559'. Acdz perms 5661'-78' w/500 gals 15% NEA. Acdz perms 5559'-84' w/1000 gals reg NEA. Swb 104 bw & no oil. Pull tbg & cap well.
11/70 Set CIBP @ 5409', PBTD @ 5400'. Perf 7" csg @ 3722'-27' w/8 1/2" JH. Spotted 500 gals 15% NEA on bottom. Set cmt ret @ 3712'. Sqz perms 3722'-27' w/150 sx cmt. Perf 7" csg 3682'-86' w/2 1/2" JHPF, 8 holes. Pmp fresh acid across perms. Set model K BP @ 3657', PBTD @ 3650'. Perf 7" csg @ 3612'-14', 3551'-53', 3482'-84', & 3425'-27' w/2 1/2" JHPF. Acdz w/3000 gals 15% NEA, used 20 sealers.
03/71 Scale treat.
04/78 Swb tst perms 3425'-3614'. Set CIBP @ 3525'. Install prod test equip. Pumped all water. POH w/rods & pmp. Well TA.
06/97 PU 106 jts tbg, tag @ 3390'. TOH w/tbg. Perf @ 3282'-84', 3272'-74', 3260'-62', 3246'-48', 3230'-32', 3220'-22', 3196'-98', 3169'-71', 3148'-50', 3120'-22', 3102'-04' w/1 JHPF. 22 holes total. Acdz perms 3102'-3284' w/1600 gals 15% and 40 1.3 RCNBs. Frac w/838 bbls gel, 677 bbls CO2 & 181,000# 12/20 sand. CO sand f/3252' to 3386'.
07/97 Set CIBP @ 2950'. Perf 2796', 2794', 2790', 2788', 2748', 2746', 2716', 2718', 2602', 2600', 2590', 2588', 2550', & 2548' w/4" csg guns, 1/JHPF. Acdz w/1500 gals, dropping 40 RCNBs. Frac w/57,500 gals 75/60/50 Quality CO2 foam & 169,800# 12/20 Brady sand.