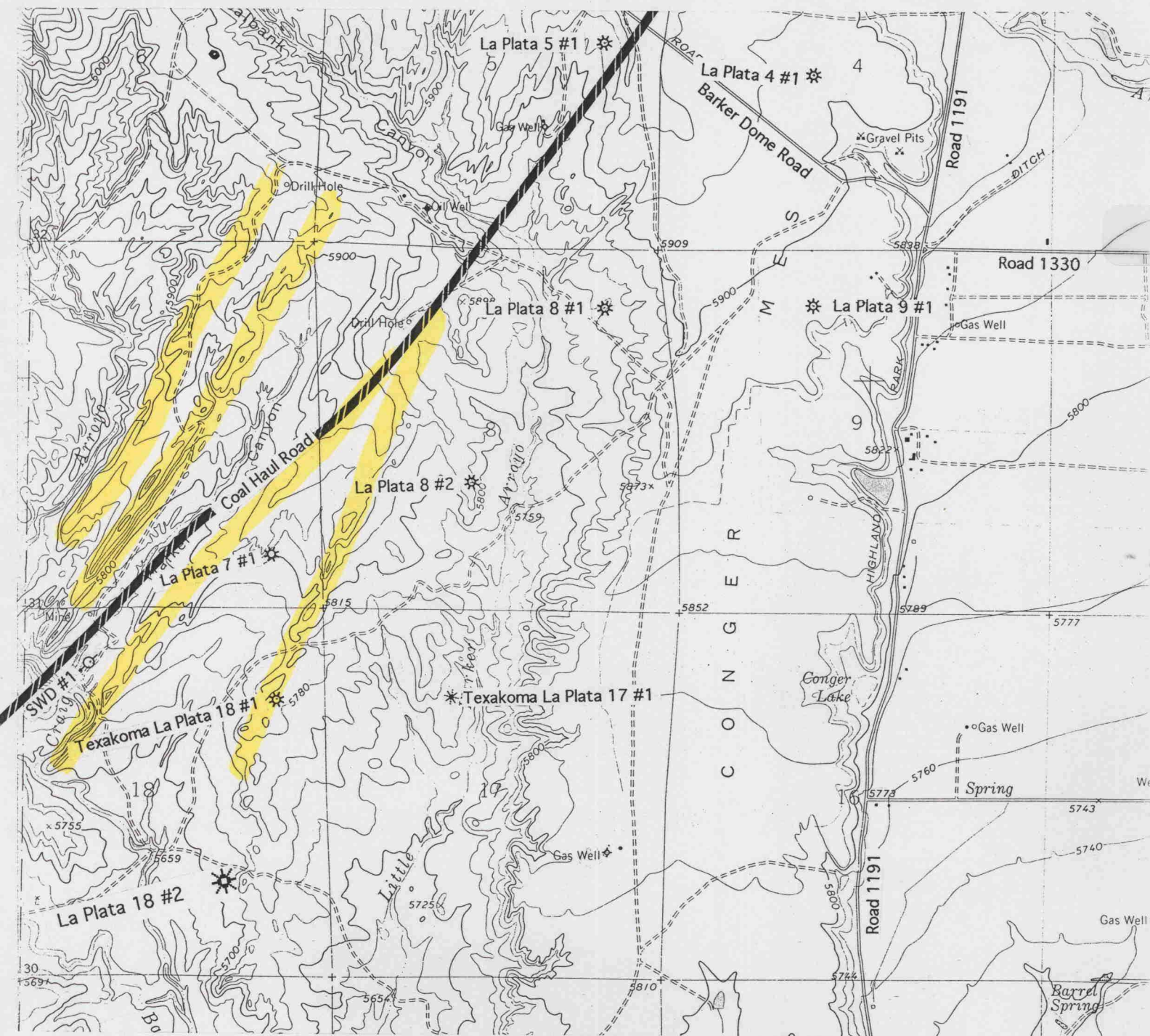


TOWNSHIP 31 NORTH, RANGE 13 WEST



The ridge lines high-lighted in yellow are the outcrops of the more competent formations which were caused by the subsidence of the San Juan Basin to the southeast and/or the Barker Dome Uplift to the northwest.

OIL CONSERVATION DIVISION

CASE NUMBER

EXHIBIT

4