

123649254

NSP (SD)



OIL CONSERVATION DIV

Hobbs Operating Unit

01 AUG 29 11:03
Texaco Exploration and Production Inc.

PO Box 3109

Midland, TX 79702

915 688-4100 tel

915 688-4751 fax

August 8, 2001

File 12743

State of New Mexico
Energy and Minerals Department
Oil Conservation Commission
1220 S. St. Francis Drive
Santa Fe, NM 87504

RE: Application for Simultaneous Dedication of the C. H. Weir A #7 to the existing
160 Skaggs Abo proration unit that includes the C. H. Weir A #14 located in
Section 12, T20S, R37E.

Ms. Lori Wrotenbery:

Texaco Exploration and Production Inc. respectfully requests approval to Simultaneous Dedicate the C. H. Weir A #7 and the C. H. Weir A #14 to the existing 160 Skaggs Abo proration unit. The C. H. Weir A #7 will be drilled, after approval is granted, at 1985 FSL and 660 FWL of Section 12, T20S, R37E with a bottom hole location at 1650 FNL and 660 FWL of Section 12, T20S, R37E.

If you have any questions concerning this matter please contact Joe Villalobos at (915) 688-4876 or Denise Wann at (915) 688-2982. Thank you in advance for your attention to this matter.

Sincerely,

Denise Wann
Senior Engineer
Hobbs Operating Unit

cc: NBMOCD (Hobbs), Offset Operators
File
Attachments

DISTRICT I
P.O. Box 1980, Hobbs, NM 88241-1980
DISTRICT II
P.O. Box Drawer DD, Artesia, NM 88211-0719
DISTRICT III
1000 Rio Brazos Rd., Aztec, NM 87410
DISTRICT IV
P.O. Box 2088, Santa Fe, NM 87504-2088

State of New Mexico
Energy, Minerals and Natural Resources Department

OIL CONSERVATION DIVISION

P.O. Box 2088
Santa Fe, New Mexico 87504-2088

Form C-102

Revised February 10, 1999

Instructions on back
Submit to Appropriate District Office
State Lease - 4 Copies
Fee Lease - 3 Copies
AMENDED REPORT

WELL LOCATION AND ACREAGE DEDICATION PLAT

1 API Number 3002527829	2 Pool Code 85410	3 Pool Name SKAGGS ABO (GAS)
4 Property Code 11130	5 Property Name WEIR, C. H. -A-	6 Well No. 14
7 OGRID Number 022351	8 Operator Name TEXACO EXPLORATION & PRODUCTION INC.	9 Elevation 3575' KB

10 Surface Location

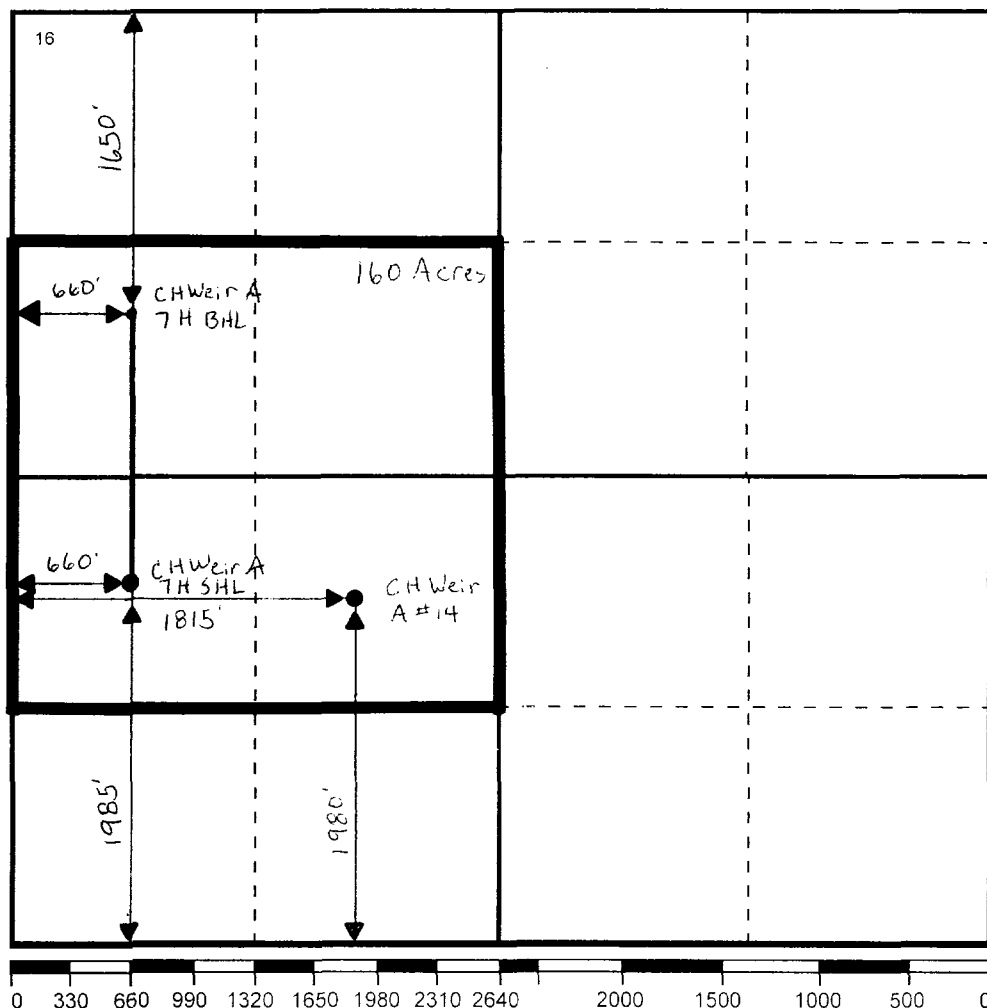
UI or lot no	Section	Township	Range	Lot.Idn	Feet From The	North/South Line	Feet From The	East/West Line	County
K	12	20S	37E		1980	SOUTH	1815	WEST	LEA

11 Bottom Hole Location If Different From Surface

UI or lot no.	Section	Township	Range	Lot.Idn	Feet From The	North/South Line	Feet From The	East/West Line	County
---------------	---------	----------	-------	---------	---------------	------------------	---------------	----------------	--------

12 Dedicated Acre 160	13 Joint or Infill No	14 Consolidation Code	15 Order No.
--------------------------	--------------------------	-----------------------	--------------

NO ALLOWABLE WILL BE ASSIGNED TO THIS COMPLETION UNTIL ALL INTERESTS HAVE BEEN CONSOLIDATED
OR A NON-STANDARD UNIT HAS BEEN APPROVED BY THE DIVISION



17 OPERATOR CERTIFICATION

I hereby certify that the information contained herein is true and complete to the best of my knowledge and belief

Signature

John Ayers
Printed Name

John Ayers

Position

Administrative Supvr

Date

3/16/94

18 SURVEYOR CERTIFICATION

I hereby certify that the well location shown on this plat was plotted from field notes of actual surveys made by me or under my supervision, and that the same is true and correct to the best of my knowledge and belief.

Date Surveyed

Signature & Seal of
Professional Surveyor

Certificate No.

DISTRICT I
P.O. Box 1980, Hobbs, NM 88241-1980
DISTRICT II
P.O. Box Drawer DD, Artesia, NM 88211-0719
DISTRICT III
1000 Rio Brazos Rd., Aztec, NM 87410
DISTRICT IV
P.O. Box 2088, Santa Fe, NM 87504-2088

State of New Mexico
Energy, Minerals and Natural Resources Department

OIL CONSERVATION DIVISION

P.O. Box 2088
Santa Fe, New Mexico 87504-2088

Form C-102

Revised February 10, 1999

Instructions on back
Submit to Appropriate District Office
State Lease - 4 Copy
Fee Lease - 3 Copy
AMENDED REPORT

WELL LOCATION AND ACREAGE DEDICATION PLAT

1 API Number 30 025 06073	2 Pool Code 85410	3 Pool Name 5Kaggs Abu (Gas)
4 Property Code 11130	5 Property Name WEIR, C. H. -A-	6 Well No. 7
7 OGRID Number 022351	8 Operator Name TEXACO EXPLORATION & PRODUCTION INC.	9 Elevation 3578' DF

10 Surface Location

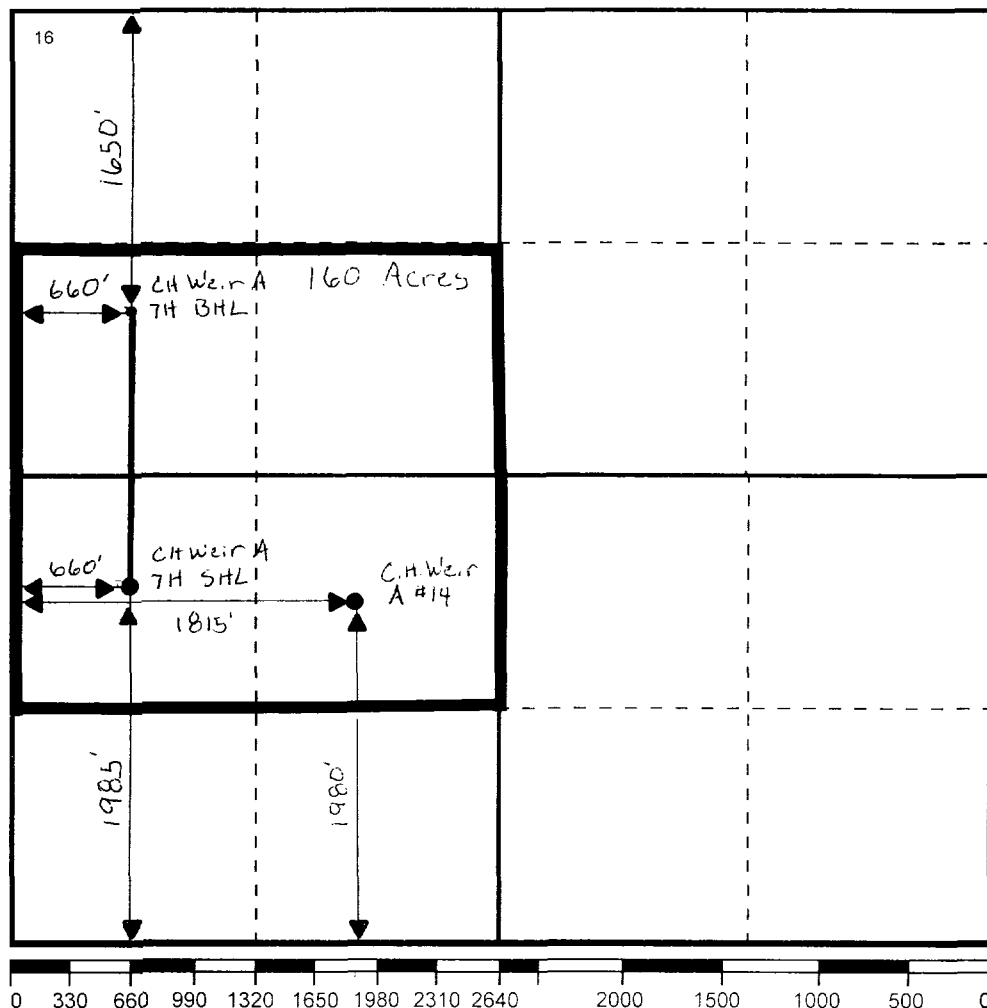
Ul or lot no	Section	Township	Range	Lot Idn	Feet From The	North/South Line	Feet From The	East/West Line	County
L	12	20S	37E		1985	SOUTH	660	WEST	LEA

11 Bottom Hole Location If Different From Surface

Ul or lot no.	Section	Township	Range	Lot Idn	Feet From The	North/South Line	Feet From The	East/West Line	County
E	12	20S	37E		1650	NORTH	660	WEST	LEA

12 Dedicated Acre 160
13 Joint or Infill No
14 Consolidation Code
15 Order No.

NO ALLOWABLE WILL BE ASSIGNED TO THIS COMPLETION UNTIL ALL INTERESTS HAVE BEEN CONSOLIDATED
OR A NON-STANDARD UNIT HAS BEEN APPROVED BY THE DIVISION



17 OPERATOR CERTIFICATION

I hereby certify that the information
contained herein is true and complete to the
best of my knowledge and belief

Signature

Printed Name

John Ayers

Position

Administrative Supvr

Date

7/11/96

18 SURVEYOR CERTIFICATION

I hereby certify that the well location shown
on this plat was plotted from field notes of
actual surveys made by me or under my
supervision, and that the same is true and
correct to the best of my knowledge and
belief.

Date Surveyed

Signature & Seal of
Professional Surveyor

Certificate No.

**Offset Operator Report
Abo Formation
(approximately 6,000'-7,000')
Lea County, New Mexico
August 16, 2001**

T-20-S, R-37-E, NMPM

Section 12: N/2 NW/4 & NW/4 NE/4

Chevron USA Inc.
P. O. Box 1150
Midland, TX 79702

Conoco Inc.
10 Desta Dr., Suite 100W
Midland, TX 79705

Atlantic Richfield Company
% BP Amoco
P. O. Box 4587
Houston, TX 77210-4587

Section 12: NE/4 NE/4

Sapient Energy Corp.
8801 S. Yale, Suite 150
Tulsa, OK 74137

COMMENTS

The above ownership is based on information found only in the county records. The State of New Mexico records were not checked.

The records of Caprock Title Company are posted through 8/3/01 @ 7:00 a.m.

**Offset Operator Report
Abo Formation
(approximately 6,000'-7,000')
Lea County, New Mexico
August 16, 2001**

T-20-S, R-37-E, NMPM

Section 1: S/2 SW/4

Rust Oil Corporation
6300 Ridglea Place, Suite 904
Fort Worth, TX 76116

*Offset operators
notified 8-21-01*

Section 1: S/2 SE/4

Chevron USA Inc.
P. O. Box 1150
Midland, TX 79702

Section 2: SE/4 SE/4

Chevron USA Inc.
P. O. Box 1150
Midland, TX 79702

Conoco Inc.
10 Desta Dr., Suite 100W
Midland, TX 79705

OXY USA WTP LP
P. O. Box 50250
Midland, TX 79710

Atlantic Richfield Company
% BP Amoco
P. O. Box 4587
Houston, TX 77210-4587