

Oil Conservation Division

2040 South Pacheco

Santa Fe, NM 87505

Submit to appropriate District Office

State Lease - 6 Copies

Fee Lease - 5 Copies

~~AMENDED REPORT~~

APPLICATION FOR PERMIT TO DRILL, RE-ENTER, DEEPEN, PLUGBACK, OR ADD A ZONE

¹ Operator Name and Address CONCHO OIL & GAS CORP. 110 W. LOUISIAN STE 410 MIDLAND, TX 79701		² OGRID Number 193407
		³ API Number 30-025-35635
³ Property Code 28437	⁵ Property Name BIG 'D' STATE	⁶ Well No. 1

⁷ Surface Location

UL or lot no.	Section	Township	Range	Lot Idn	Feet from the	North/South line	Feet from the	East/West line	County
11	6	16S	34E		3498	NORTH	1200	WEST	LEA

⁸ Proposed Bottom Hole Location If Different From Surface

UL or lot no.	Section	Township	Range	Lot Idn	Feet from the	North/South line	Feet from the	East/West line	County

⁹ Proposed Pool 1

Hume Morrow

¹⁰ Proposed Pool 2

Strawn

¹¹ Work Type Code N	¹² Well Type Code G	¹³ Cable/Rotary R	¹⁴ Lease Type Code S	¹⁵ Ground Level Elevation 4164'
¹⁶ Multiple S	¹⁷ Proposed Depth 12600	¹⁸ Formation ATOKA MORROW	¹⁹ Contractor	²⁰ Spud Date WHEN APPROVED

²¹ Proposed Casing and Cement Program

Hole Size	Casing Size	Casing weight/foot	Setting Depth	Sacks of Cement	Estimated TOC
25	20		40	Redi-Mix	SURF
17-1/2	13-3/8	48	400	550	SURF
12-1/4	8-5/8	32	4300	1400	SURF
7-7/8	5-1/2	17 & 20	12600	700	Est. 8000'
			13000		

²² Describe the proposed program. If this application is to DEEPEN or PLUG BACK, give the data on the present productive zone and proposed new productive zone. Describe the blowout prevention program, if any. Use additional sheets if necessary.

Concho Oil & Gas Corp. respectfully requests approval to drill the Big 'D' State No. 1 well according to the following procedure:

1. Drill 25" hole to 40'. Set 40' of 20" conductor pipe & cmt to surface w/ Redi-Mix.
2. Drill 17-1/2" hole to 400'. Run & set 400' of 13-3/8", 48#, H-40, ST&C csg. Cmt w/ 550 sx 'C' cmt + additives.
3. Drill 12-1/4" hole to 4300'. Run & set 4300' of 8-5/8", 32#, J-55 ST&C csg. Cmt w/ 1400 sx 'C' cmt.
4. Drill 7-7/8" hole to 12600'. Run & set 12600' of 5-1/2" 17 & 20#, N-80 LT&C csg. Cmt w/ Super Modified "H" + .4% CFR-3 + .5% Halad 344 + 5# Gilsonite/sx + 1# salt/sx. Est. TOC @

BEFORE THE
OIL CONSERVATION DIVISION
Case No. 12775 Exhibit No. **A-3**
Submitted By:
Concho Resources, Inc.
Hearing Date: December 6, 2001

²³ I hereby certify that the information given above is true and complete to the best of my knowledge and belief.

Signature: 

Printed name: Terri Stathem

Title: Production Analyst

Date: 9-13-01

Phone: (915) 683-7443

OIL CONSERVATION DIVISION

Approved by:

Title:

Approval Date: SEP 13 2001

Expiration Date:

Conditions of Approval:

Attached ☐

DISTRICT I
P.O. Box 1980, Hobbs, NM 88241-1980

DISTRICT II
P.O. Drawer 22, Artesia, NM 88211-0719

DISTRICT III
1000 Rio Brazos Rd., Aztec, NM 87410

DISTRICT IV
P.O. Box 2088, Santa Fe, N.M. 87504-2088

State of New Mexico
Energy, Minerals and Natural Resources Department

Form C-102
Revised February 10, 1994
Submit to Appropriate District Office
State Lease - 4 Copies
Fee Lease - 3 Copies

OIL CONSERVATION DIVISION
P.O. Box 2088
Santa Fe, New Mexico 87504-2088

WELL LOCATION AND ACREAGE DEDICATION PLAT

☐ AMENDED REPORT

API Number		Pool Code		Pool Name	
Property Code		Property Name BIG "D" STATE			Well Number 1
OGRM No.		Operator Name CONCHO OIL & GAS, INC.			Elevation 4164'

Surface Location

UL or lot No.	Section	Township	Range	Lot Idn *	Feet from the	North/South line	Feet from the	East/West line	County
11	6	16-S	34-E		3498	NORTH	1200	WEST	LEA

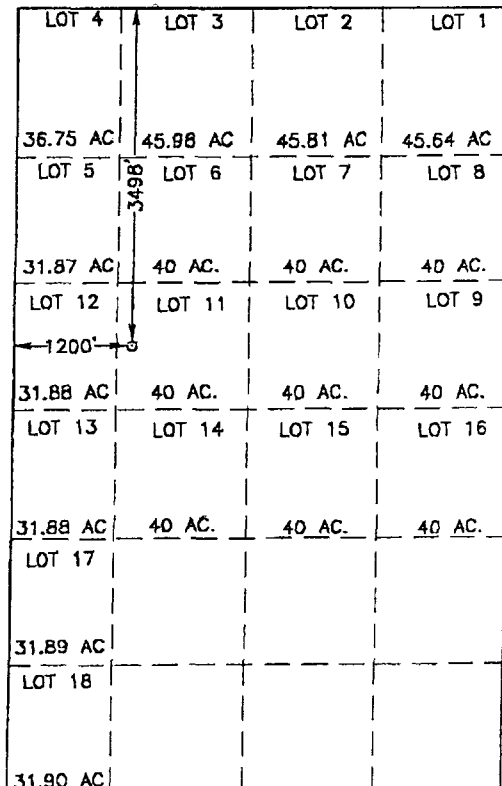
Bottom Hole Location If Different From Surface

UL or lot No.	Section	Township	Range	Lot Idn	Feet from the	North/South line	Feet from the	East/West line	County
Dedicated Acres		Joint or Infill		Consolidation Code		Order No.			

NO ALLOWABLE WILL BE ASSIGNED TO THIS COMPLETION UNTIL ALL INTERESTS HAVE BEEN CONSOLIDATED
OR A NON-STANDARD UNIT HAS BEEN APPROVED BY THE DIVISION

GEODETTIC COORDINATES

NMSPC EZ NAD 27
Y = 712374.8
X = 723833.2
LAT = 32°57'22.53" N
LONG = 103°36'13.00" W



SCALE: 1" = 2000'

OPERATOR CERTIFICATION

I hereby certify that the information
contained herein is true and complete to the
best of my knowledge and belief.

Signature
Terri Statham
Printed Name
Production Analyst
Title
7-16-01
Date

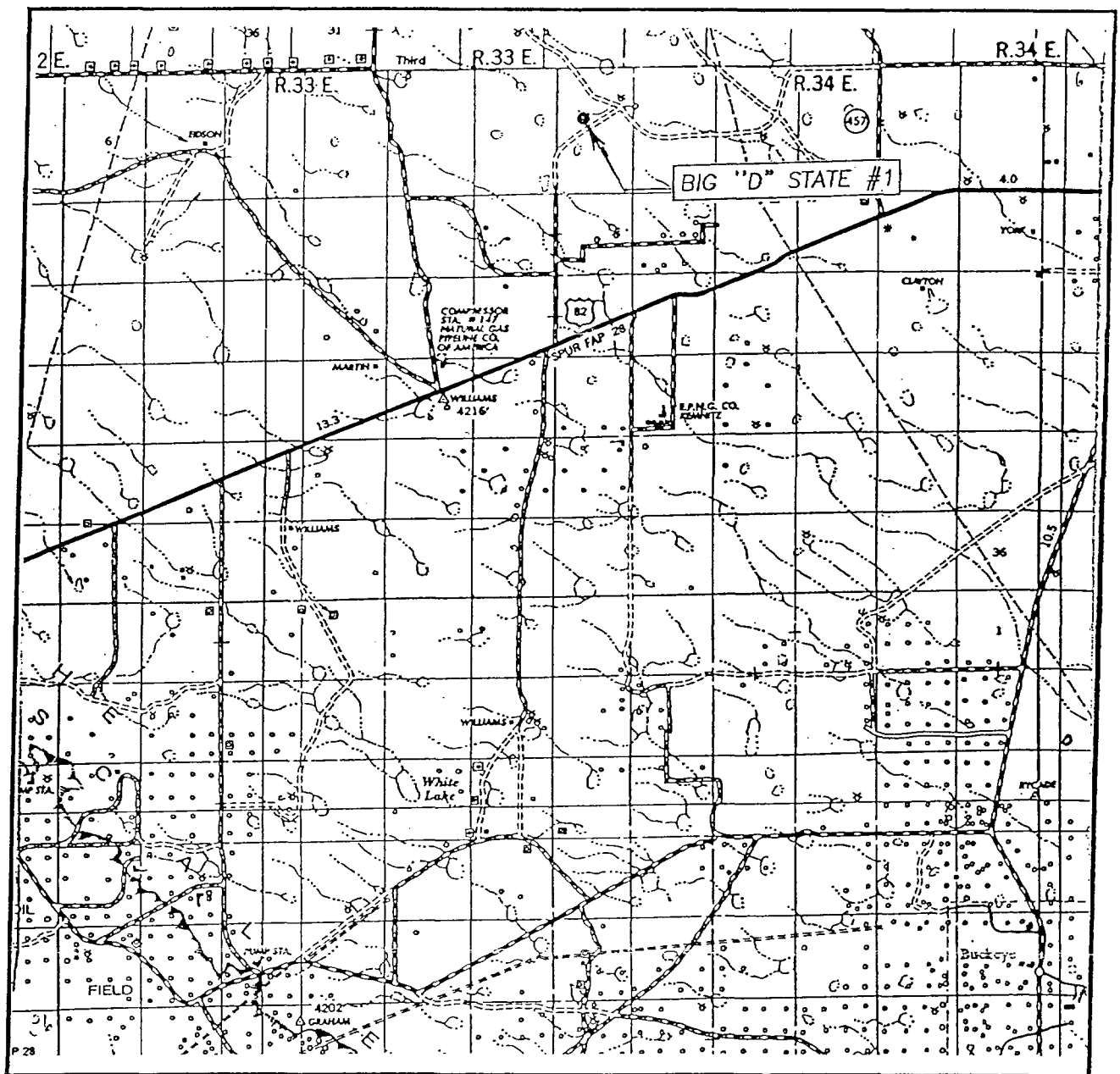
SURVEYOR CERTIFICATION

I hereby certify that the well location shown
on this plat was plotted from field notes of
actual surveys made by me or under my
supervision, and that the same is true and
correct to the best of my belief.

JULY 09, 2001

Date Surveyed
Signature of Surveyor
Professional Surveyor
NEW MEXICO
Certified by: RONALD C. EDISON 3239
12641

VICINITY MAP



SCALE: 1" = 2 MILES

SEC. 6 TWP. 16-S RGE. 34-E

SURVEY N.M.P.M.

COUNTY LEA

DESCRIPTION 3498' FNL & 1200' FWL

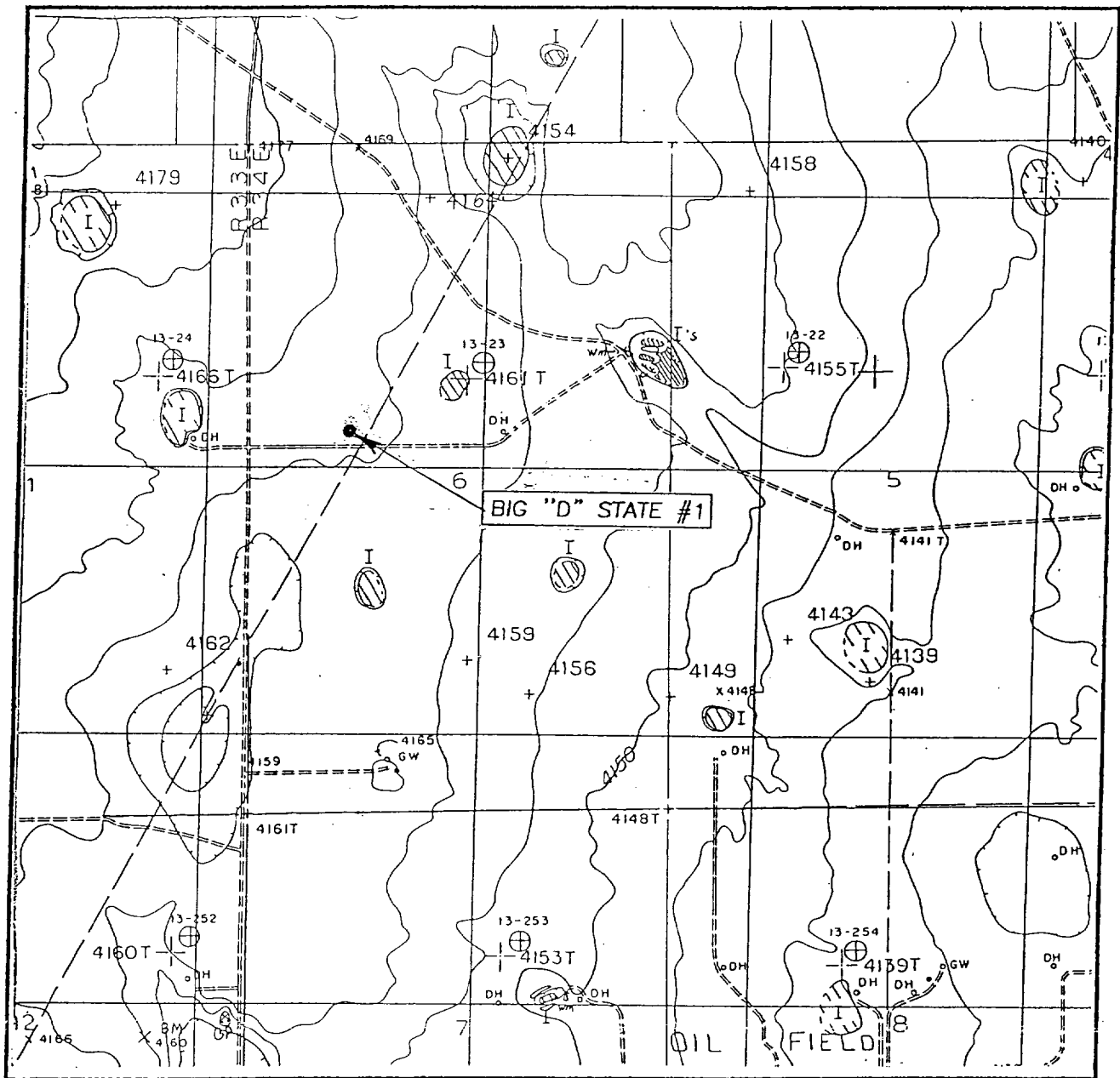
ELEVATION 4164'

OPERATOR CONCHO OIL & GAS CORPORATION

LEASE BIG "D" STATE

JOHN WEST SURVEYING
HOBBS, NEW MEXICO
(505) 393-3117

LOCATION VERIFICATION MAP



SCALE: 1" = 2000'

CONTOUR INTERVAL: 10'

BUCKEYE NE, N.M.

SEC. 6 TWP. 16-S RGE. 34-E

SURVEY N.M.P.M.

COUNTY LEA

DESCRIPTION 3498' FNL & 1200' FWL

ELEVATION 4164'

OPERATOR CONCHO OIL & GAS, INC.

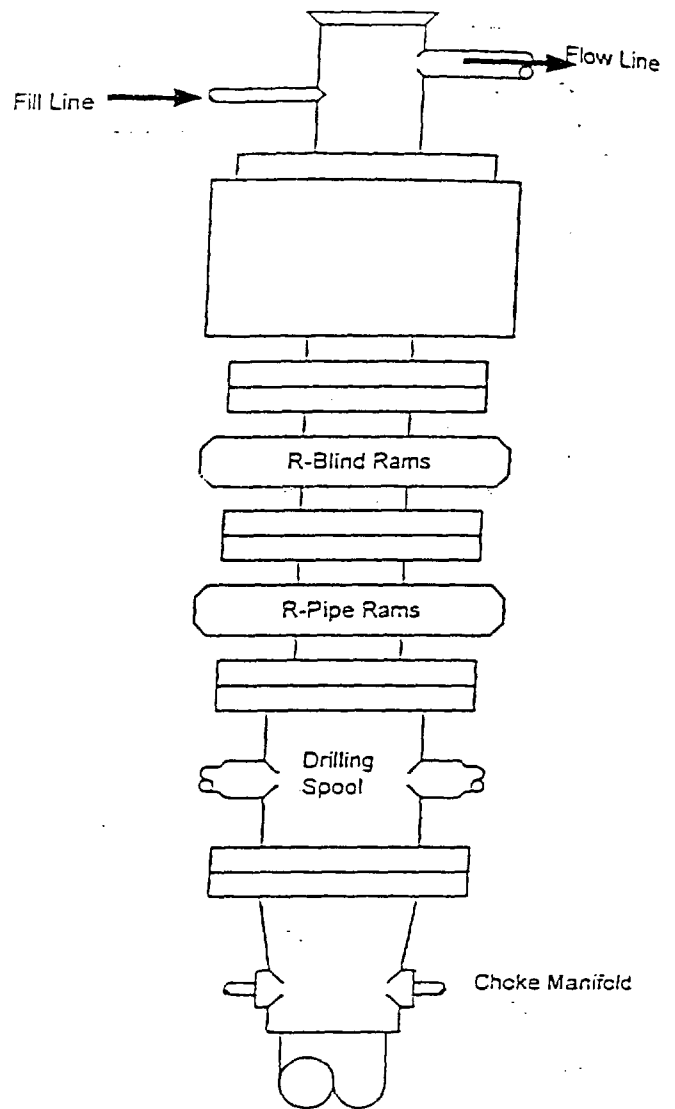
LEASE BIG "D" STATE

U.S.G.S. TOPOGRAPHIC MAP

BUCKEYE NE, N.M.

JOHN WEST SURVEYING
HOBBS, NEW MEXICO
(505) 393-3117

BLOWOUT PREVENTER SYSTEM



Type 900 Series
3000 psi WP

Choke Manifold Assembly for 3M WP System

