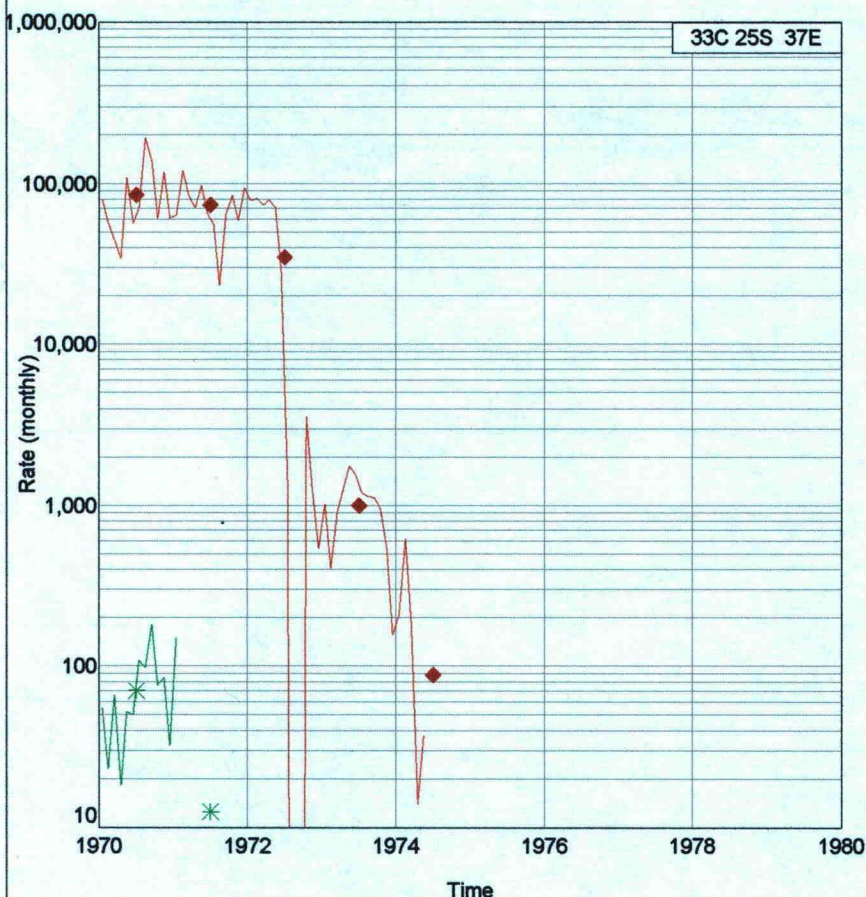


EL PASO NATURAL GAS CO - GREGORY FEDERAL #2Y (DEVONIAN)



Lease Name: GREGORY FEDERAL (2Y)
 Lease Number: 2Y
 Lease API: 30-025-1187900
 Location: 33C 25S 37E
 County, ST: LEA, NM
 Reservoir: DEVONIAN

OIL CONSERVATION DIVISION

CASE NUMBER

EXHIBIT

1

Reserves:

Cumulative Production at Last Production Date

Cumulative Oil	41,443	bbl
Cumulative Gas	12,265,142	mcf
Cumulative Water	0	bbl
Cumulative Inj	0	bbl

Cumulative Production at Effective Date

Cum Oil at Eff Date	41,443	bbl
Cum Gas at Eff Date	12,265,142	mcf
Cum Water at Eff Date	0	bbl
Cum Inj at Eff Date	0	bbl

Remaining Reserves

Rem Oil (Decline)	0	bbl
Rem Oil (Press)	9,684	bbl
Rem Oil (Vol)	3,826	bbl
Rem Gas (Decline)	0	mcf
Rem Gas (Press)	2,624,883	mcf
Rem Gas (Vol)	5,364	mcf
Rem Inj (Decline)	0	bbl

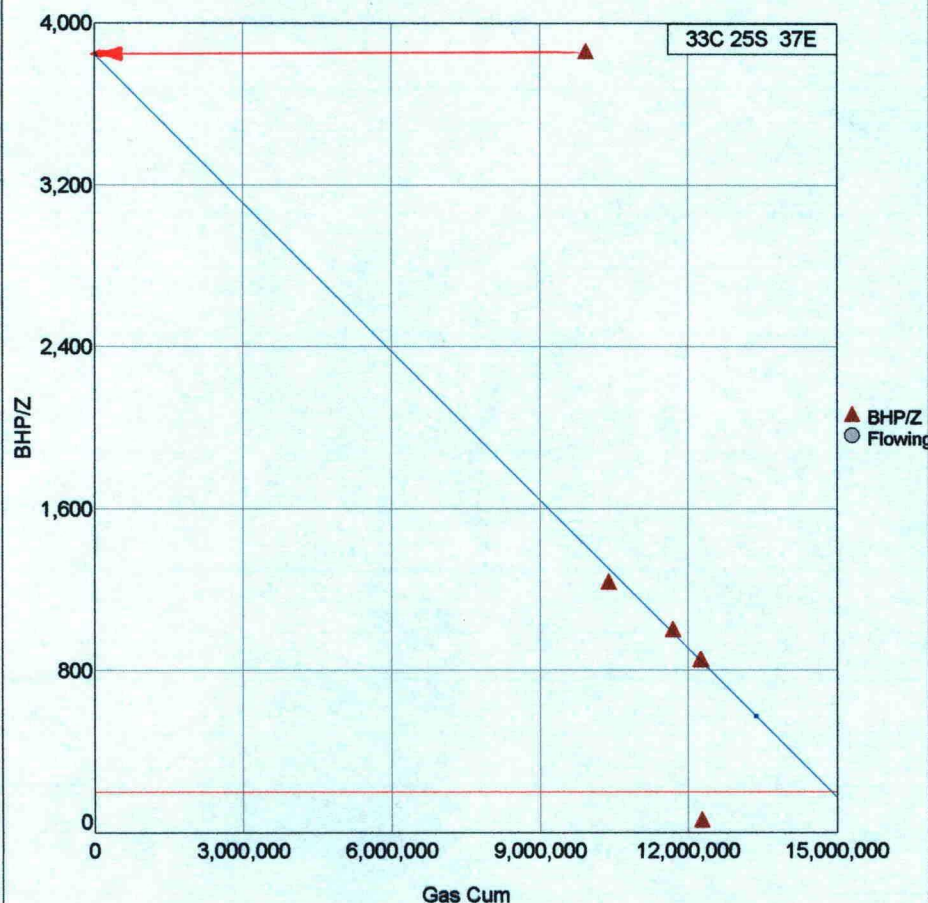
Ultimate Reserves

Ult Oil (Decline)	41,443	bbl
Ult Oil (Press)	54,933	bbl
Ult Oil (Vol)	45,269	bbl
Ult Gas (Decline)	12,265,142	mcf
Ult Gas (Press)	14,890,025	mcf
Ult Gas (Vol)	12,270,506	mcf
Ult Inj (Decline)	0	bbl

Twelve Months Prior to Effective Date

Prior Twelve Months Oil	0	bbl
Prior Twelve Months Gas	0	mcf
Prior Twelve Months Water	0	bbl
Prior Twelve Months Injection	0	bbl

EL PASO NATURAL GAS CO - GREGORY FEDERAL #2Y (DEVONIAN)



Crosby Field
 T25S,R37E Lea Co., New Mexico
 Chaparral Energy, Inc.

Lease Name: GREGORY FEDERAL (2Y)
Lease Number: 2Y
Location: 33C 25S 37E
County, ST: LEA, NM
Reservoir: DEVONIAN

General Volumetrics:

Water Saturation: 25.00 %
Porosity: 11.44 %
Drainage Acres: 421 acres
Zone Net Pay: 36.0 feet
Zone Temperature: 130.0 F
Zone Pressure: 3300 psia
Zone Depth: 7980 feet
Surface Temperature: 60.0 F

Gas Volumetrics:

Gas Gravity: 0.650
Condensate: Yes
N2 Content: 0.00 %
CO2 Content: 0.00 %
H2S Content: 0.00 %
Abandonment Pressure: 200 psia
Yield: 0.0037 bbl / mcf

Volumetric Calculations:

Zi: 0.8466
Gas In Place: 12,951,653 mcf
Ultimate Gas: 12,270,506 mcf
Prior Gas: 12,265,142 mcf
Remaining Gas: 5,364 mcf
Oil In Place: 47,782 bbl
Ultimate Oil: 45,269 bbl
Prior Oil: 41,443 bbl
Remaining Oil: 3,826 bbl
Drainage Radius: 2,419 feet
Recovery: 94.74 %