

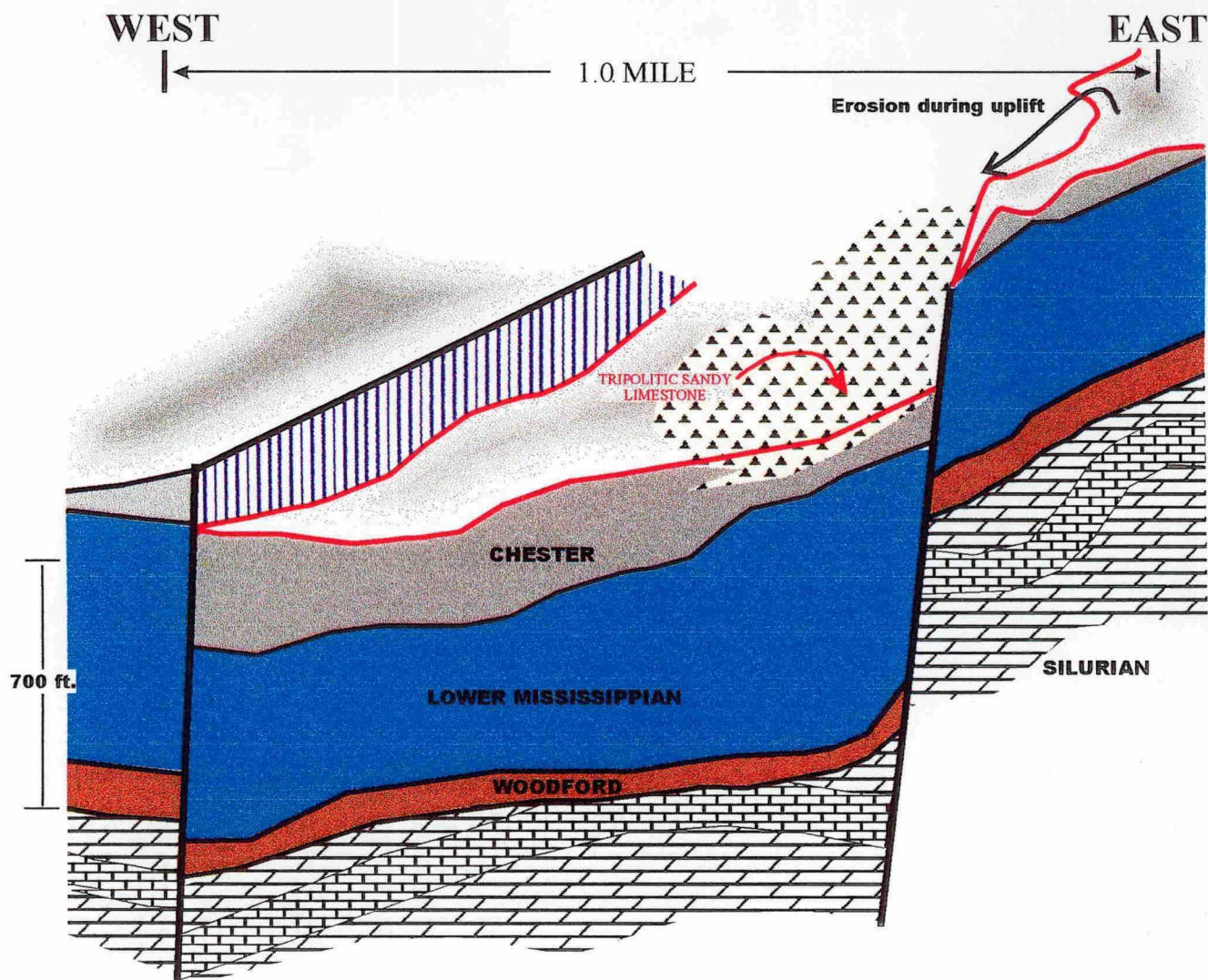
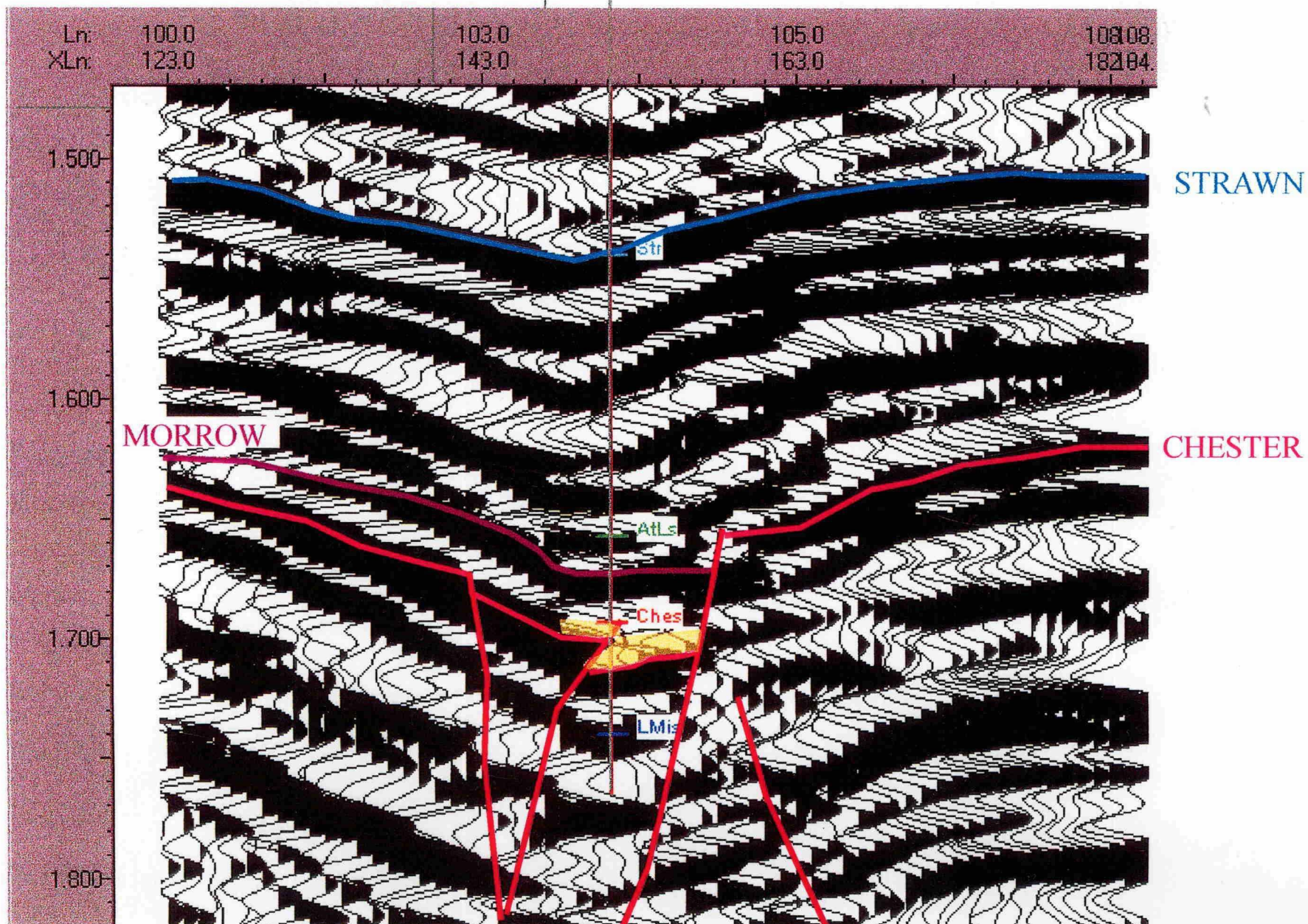
West

Section 23

TMBR/SHARP
BLUE FIN 24 #1

Section 24

East



MODEL FOR FORMATION OF UPPER CHESTER CHERTY SANDS

Louis J. Mazzullo
Certified Petroleum Geologist
Albuquerque, New Mexico

5/14/2002

BEFORE THE
OIL CONSERVATION COMMISSION
Case No. 12816 Exhibit No. 18 E
Submitted By:
TMBR/Sharp Drilling
Hearing Date: May 16, 2002

BIG TUNA PROSPECT
Twp. 16S, Rge. 35E
Lea County, New Mexico

North

Section 23

Section 24

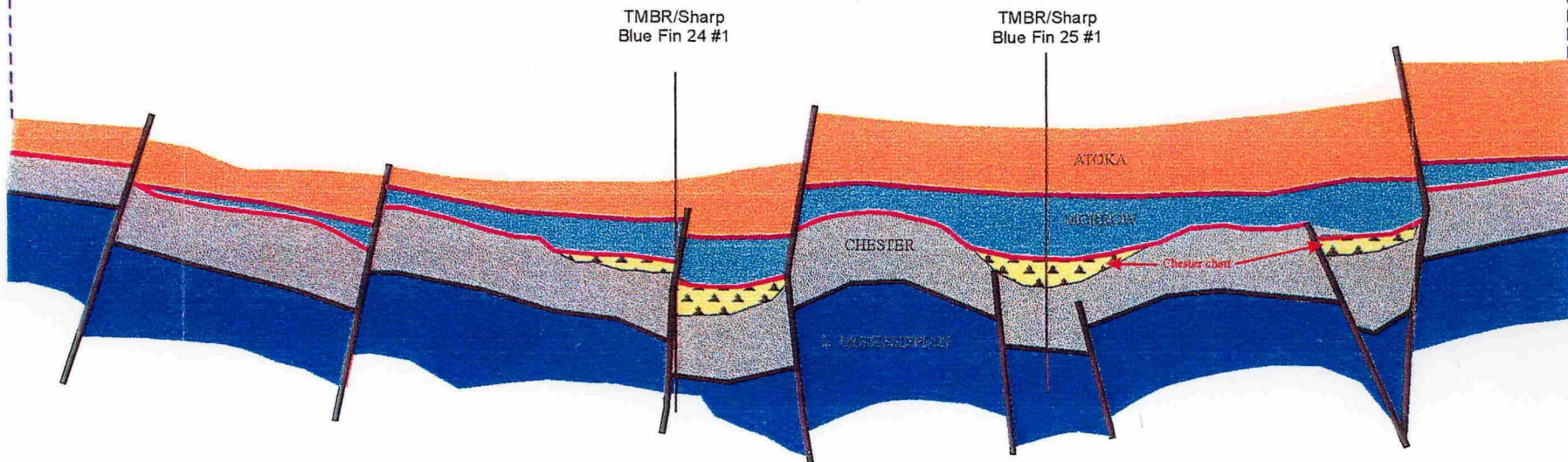
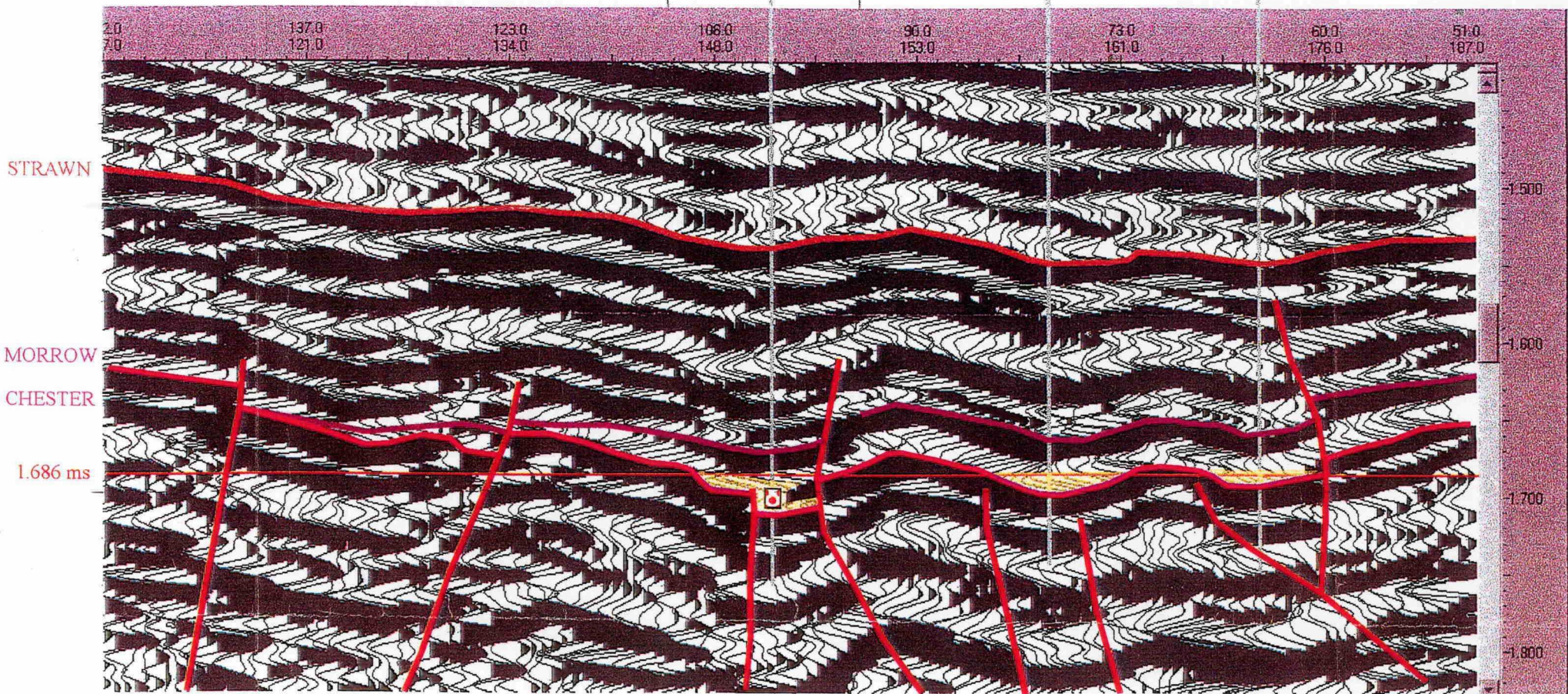
Section 25

South

TMBR/SHARP
BLUE FIN 24 #1

TMBR/SHARP
BLUE FIN 25 #1

NE/SW SEC. 25



Louis J. Mazzullo
Certified Petroleum Geologist
Albuquerque, New Mexico

5/14/2002

BEFORE THE
OIL CONSERVATION COMMISSION
Case No. 12816 Exhibit No. 18-F
Submitted By:
TMBR/Sharp Drilling
Hearing Date May 16, 2002

BIG TUNA PROSPECT
Twp. 16S, Rge. 35E
Lea County, New Mexico

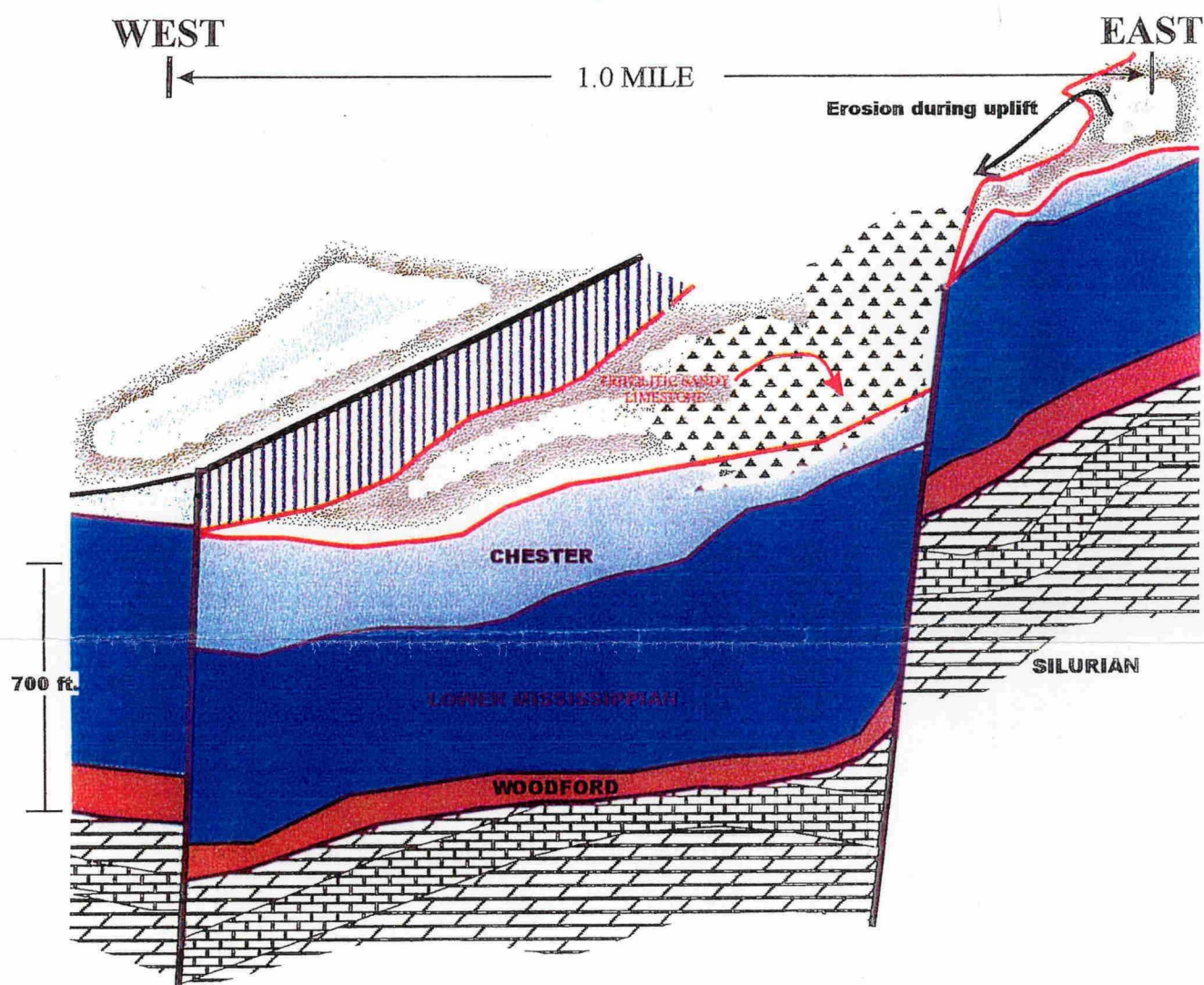
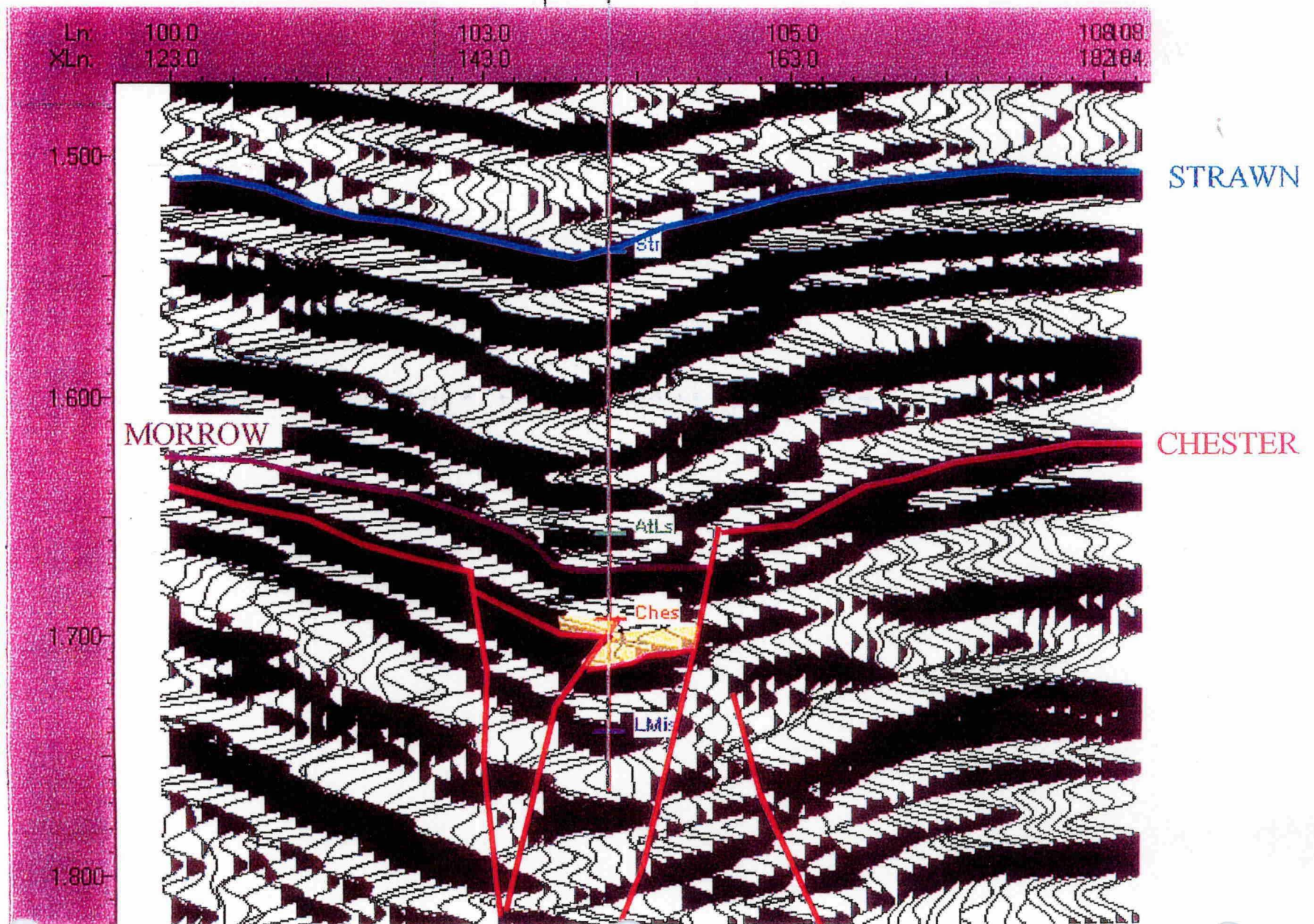
West

Section 23

TMBR/SHARP
BLUE FIN 24 #1

Section 24

East



MODEL FOR FORMATION OF UPPER CHESTER CHERTY SANDS

Louis J. Mazzullo
Certified Petroleum Geologist
Albuquerque, New Mexico

5/14/2002

BEFORE THE
OIL CONSERVATION COMMISSION
Case No. 12816 Exhibit No. 18-E
Submitted By:
TMBR/Sharp Drilling
Hearing Date: May 16, 2002

BIG TUNA PROSPECT
Twp. 16S, Rge. 35E
Lea County, New Mexico