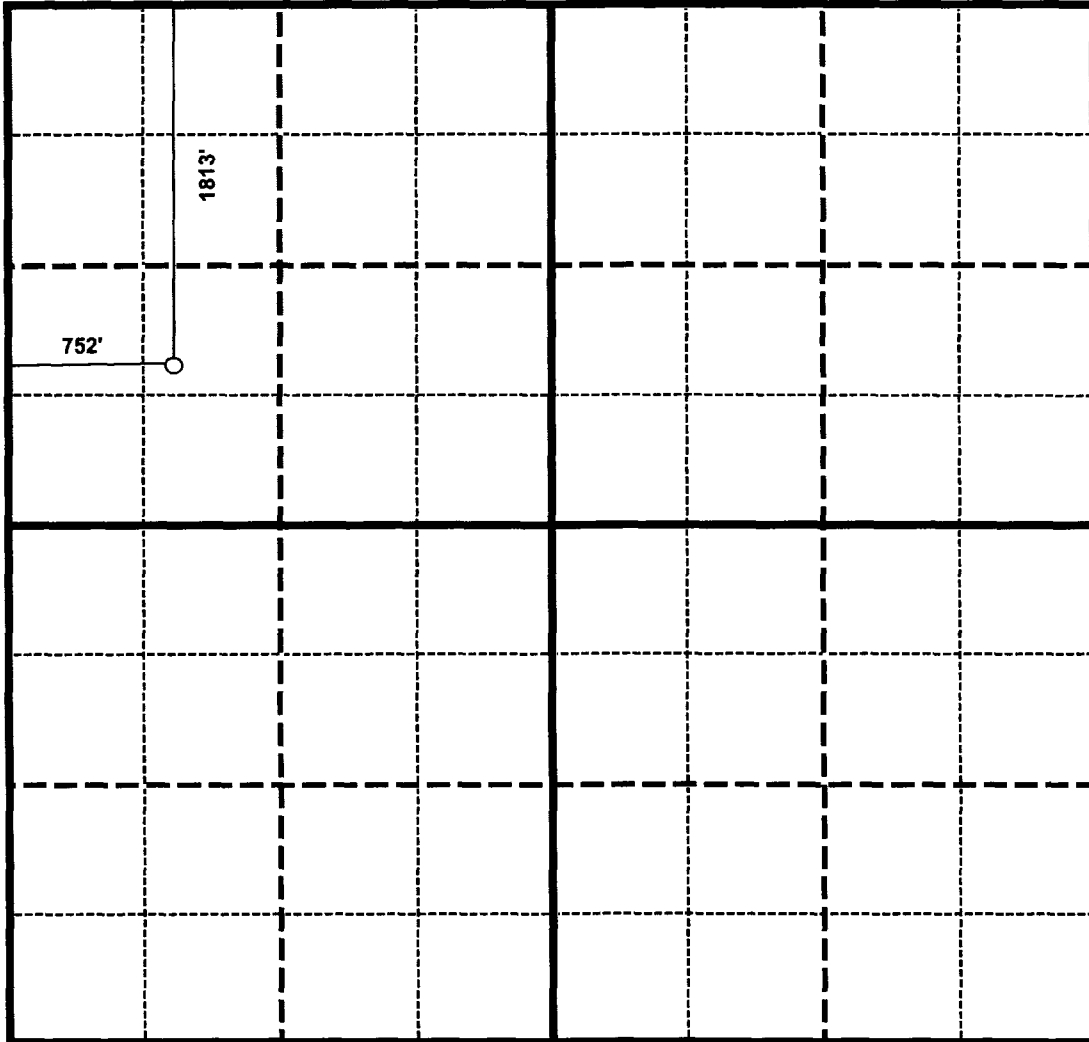


FRPC 21-2 WELL - GAS
NW/4 SECTION 21, TOWNSHIP 29 NORTH, RANGE 13 WEST, NMPM
WEST KUTZ PICTURED CLIFFS
PROPOSED DEPTH OF 1200'



RICHARDSON OPERATING COMPANY LEASEHOLD INTEREST
UNLEASED MINERAL INTEREST TO BE FORCE POOLED

65.09%
34.91%

**BEFORE THE
OIL CONSERVATION DIVISION**
Case No.12854 Exhibit No. 1
Submitted By:
Richardson Production
Hearing Date: July 11, 2002