

North

Section 23

Section 24

Section 25

South

TMBR/SHARP  
BLUE FIN 24 #1

TMBR/SHARP  
BLUE FIN 25 #1

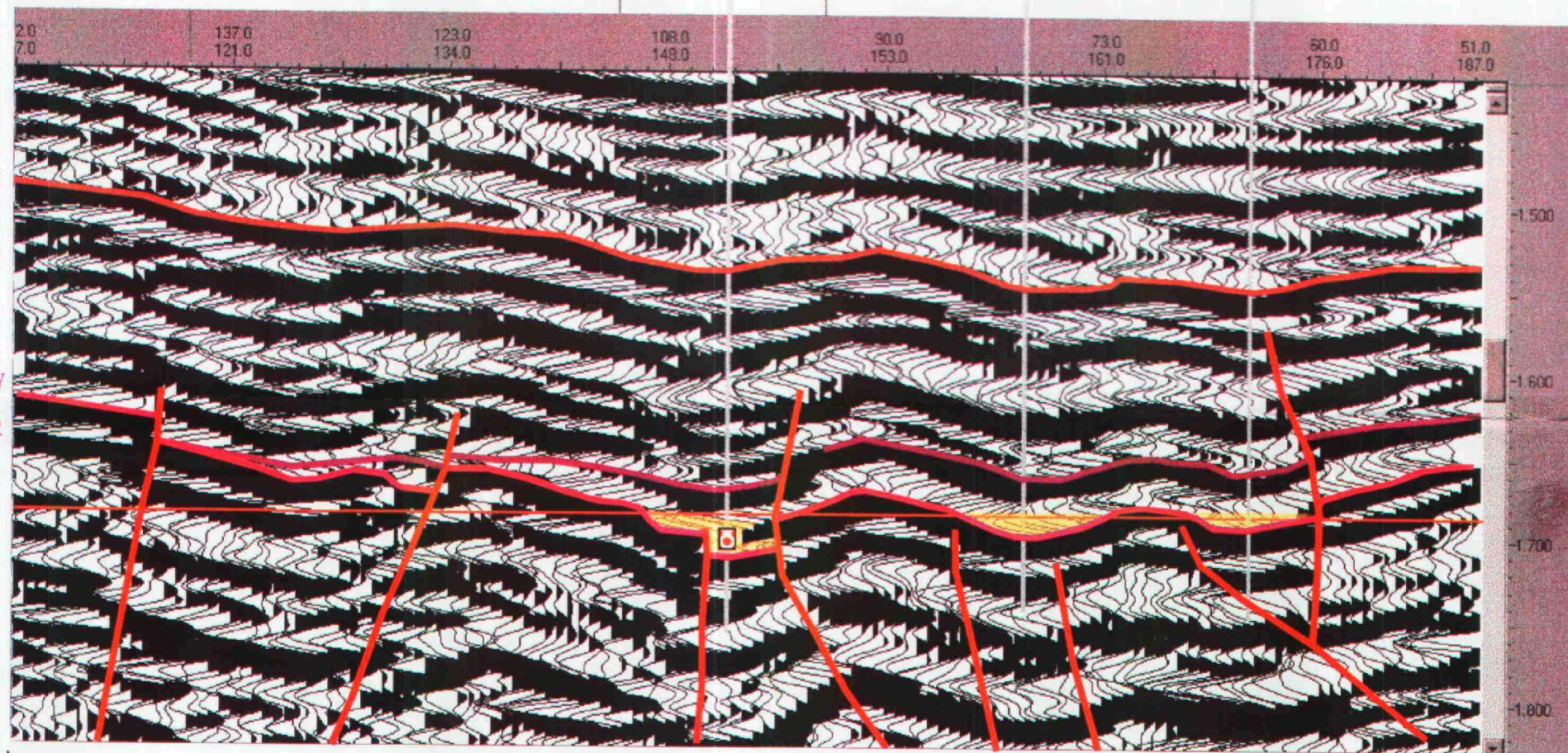
NE/SW SEC. 25

STRAWN

MORROW

CHESTER

1.686 ms



TMBR/Sharp  
Blue Fin 24 #1

TMBR/Sharp  
Blue Fin 25 #1

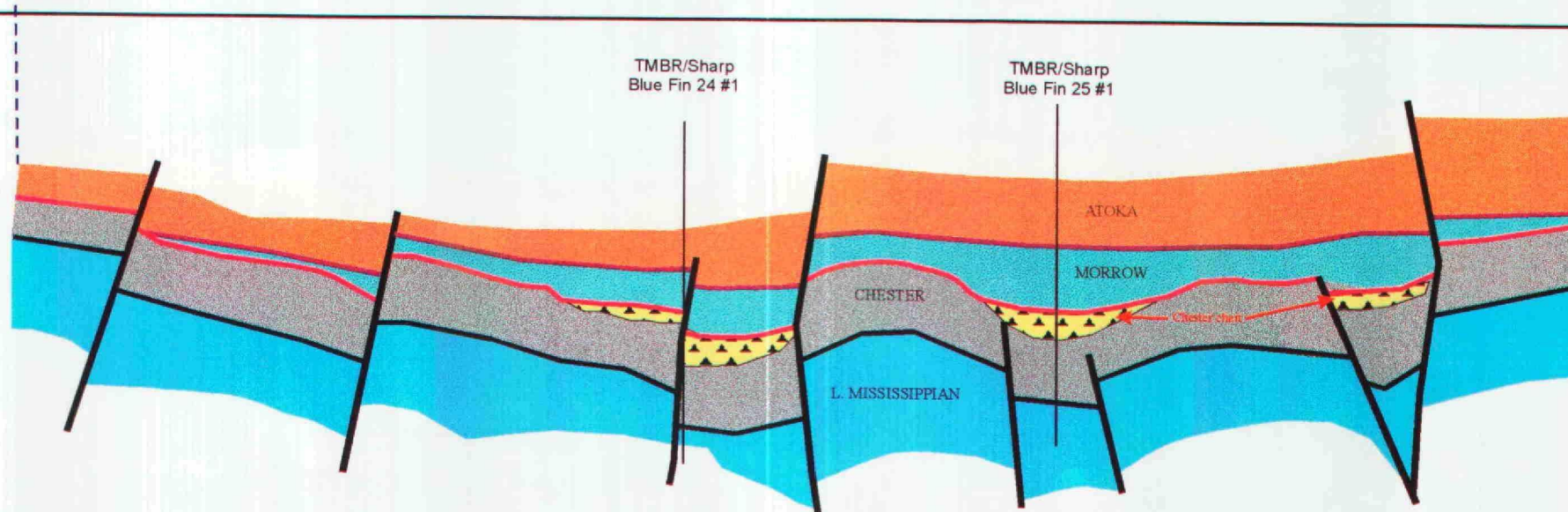
ATOKA

MORROW

CHESTER

L. MISSISSIPPIAN

Chester sh.



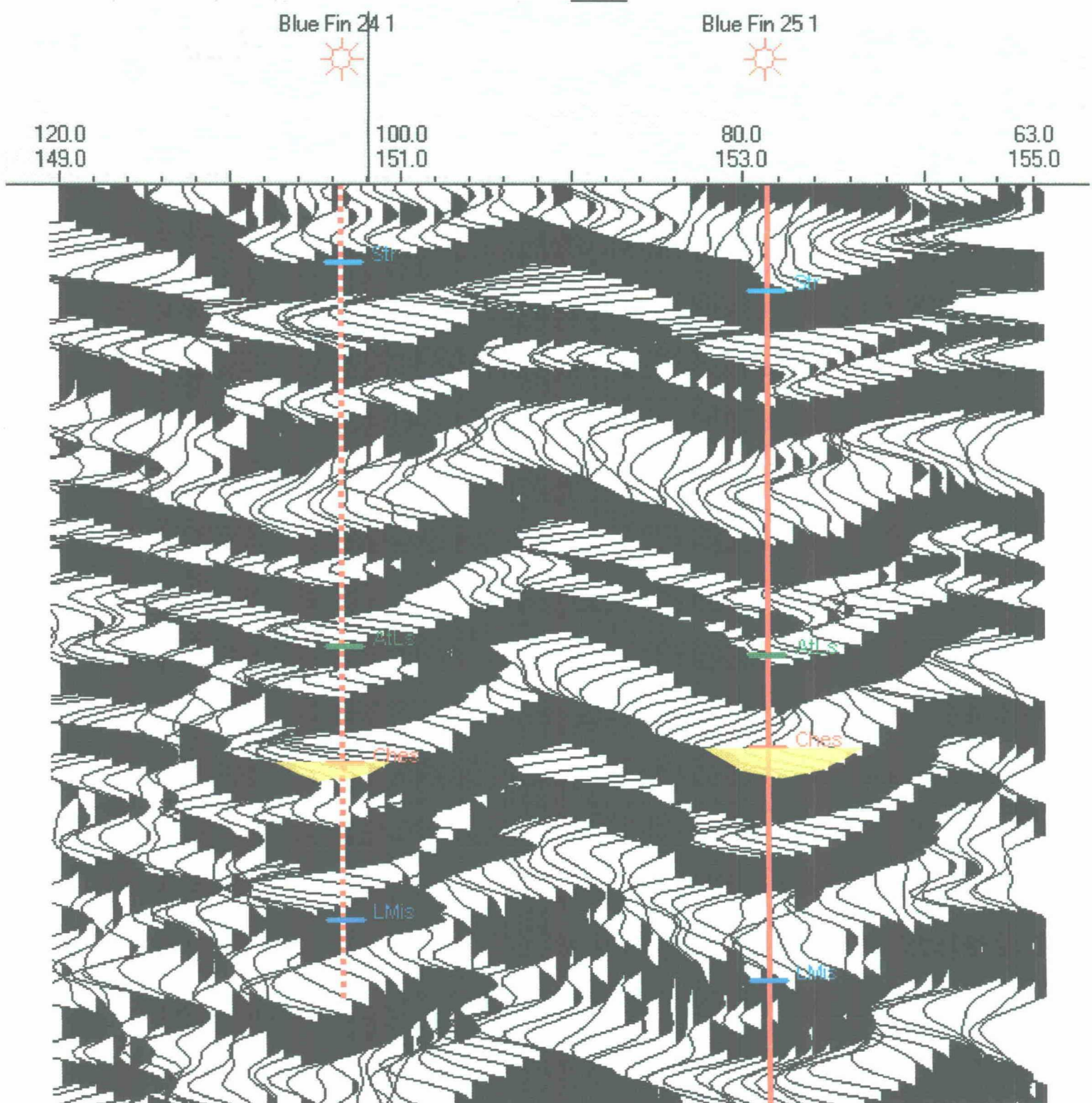
Louis J. Mazzullo  
Certified Petroleum Geologist  
Albuquerque, New Mexico

5/14/2002

**BIG TUNA PROSPECT**  
**Twp. 16S, Rge. 35E**  
**Lea County, New Mexico**

BEFORE THE  
OIL CONSERVATION COMMISSION  
Case No. 12816 Exhibit No. 15-A  
Submitted By:  
*TMBR/Sharp Drilling*  
Hearing Date: March 20, 2003





Louis J. Mazzullo  
Geological Consultant  
Albuquerque, NM  
3/19/03

## BIG TUNA PROSPECT Lea County, NM

BEFORE THE  
OIL CONSERVATION COMMISSION  
Case No. 12816 Exhibit No. 15-B  
Submitted By:  
TMBR/Sharp Drilling  
Hearing Date: March 20, 2003



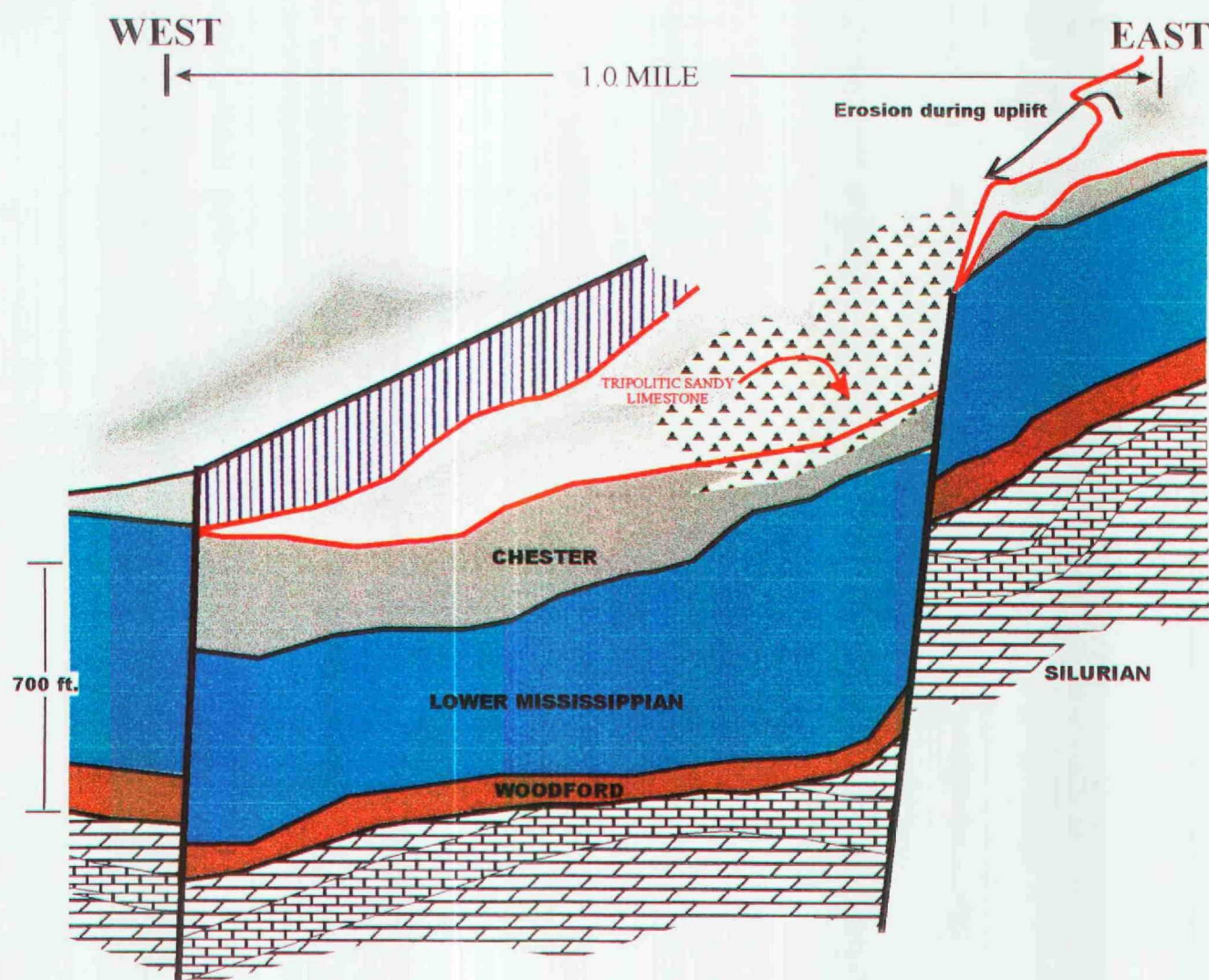
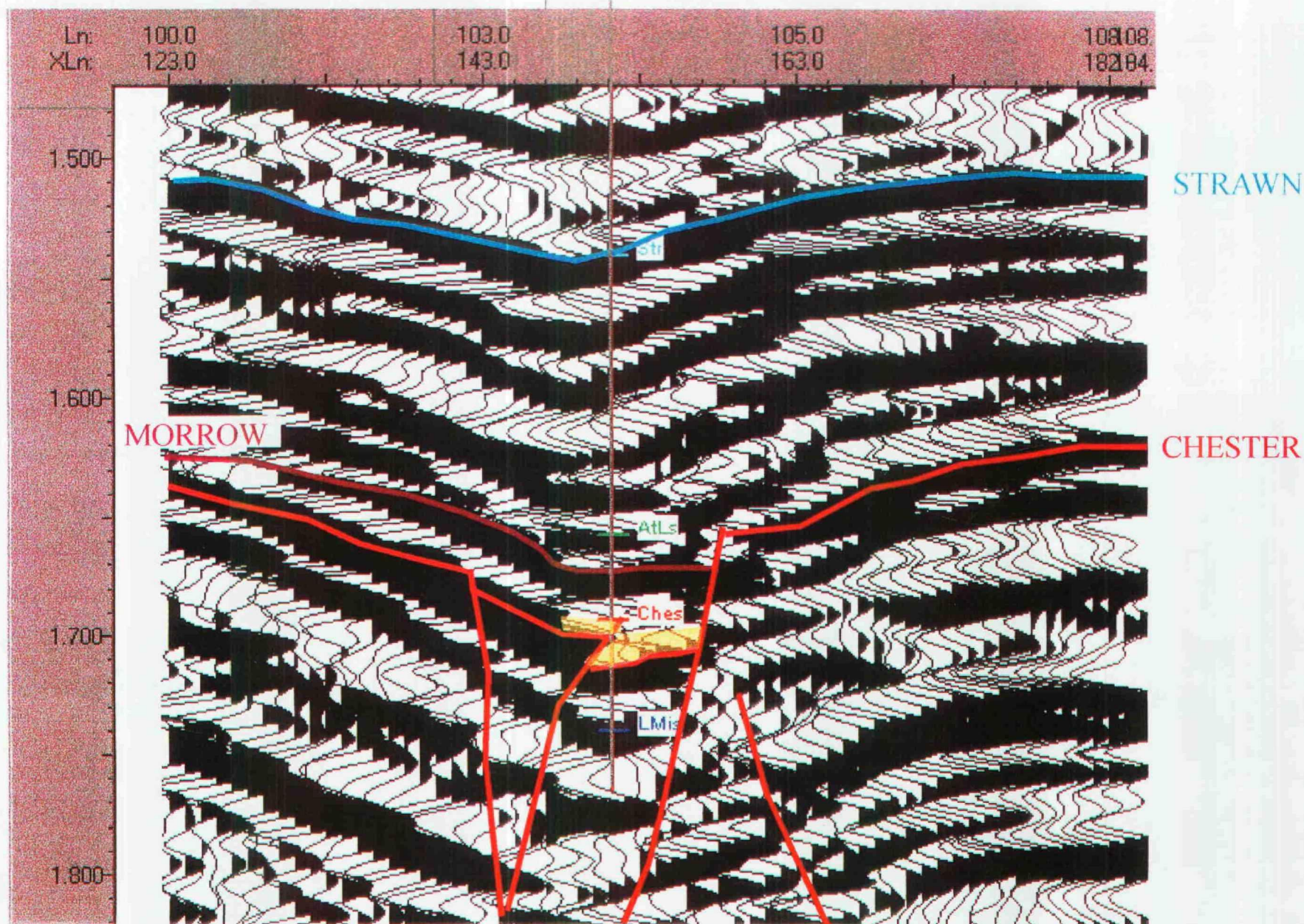
West

Section 23

TMBR/SHARP  
BLUE FIN 24 #1

Section 24

East



MODEL FOR FORMATION OF UPPER CHESTER CHERTY SANDS

Louis J. Mazzullo  
Certified Petroleum Geologist  
Albuquerque, New Mexico

5/14/2002

BEFORE THE  
OIL CONSERVATION COMMISSION  
Case No. 12816 Exhibit No. 18 E  
Submitted By:  
TMBR/Sharp Drilling  
Hearing Date: May 16, 2002

BIG TUNA PROSPECT  
Twp. 16S, Rge. 35E  
Lea County, New Mexico



North

Section 23

Section 24

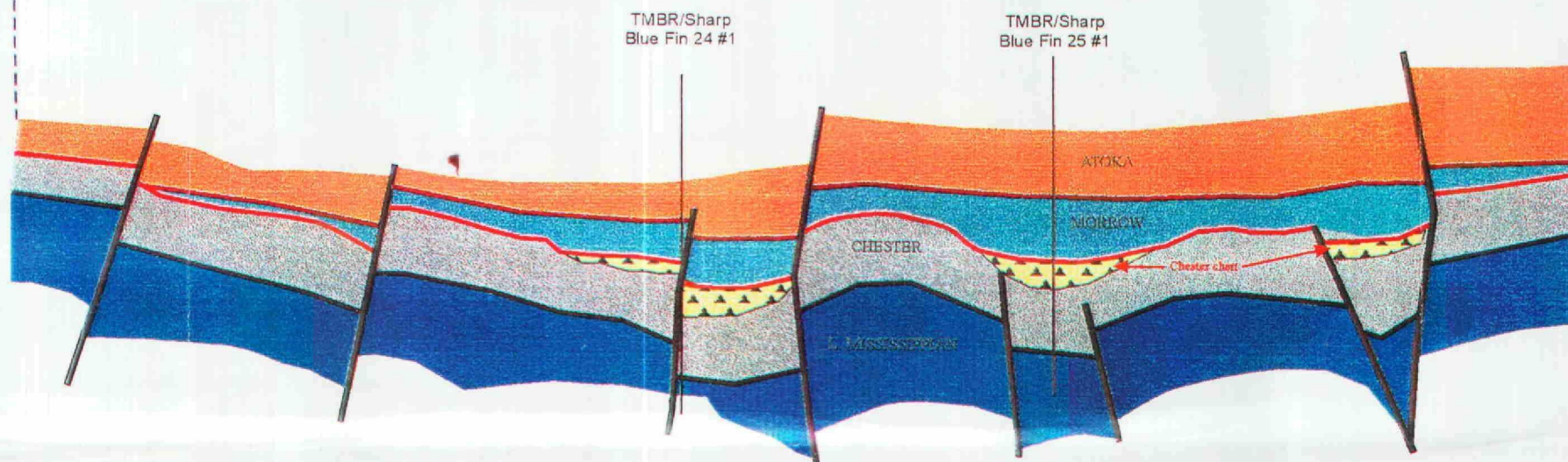
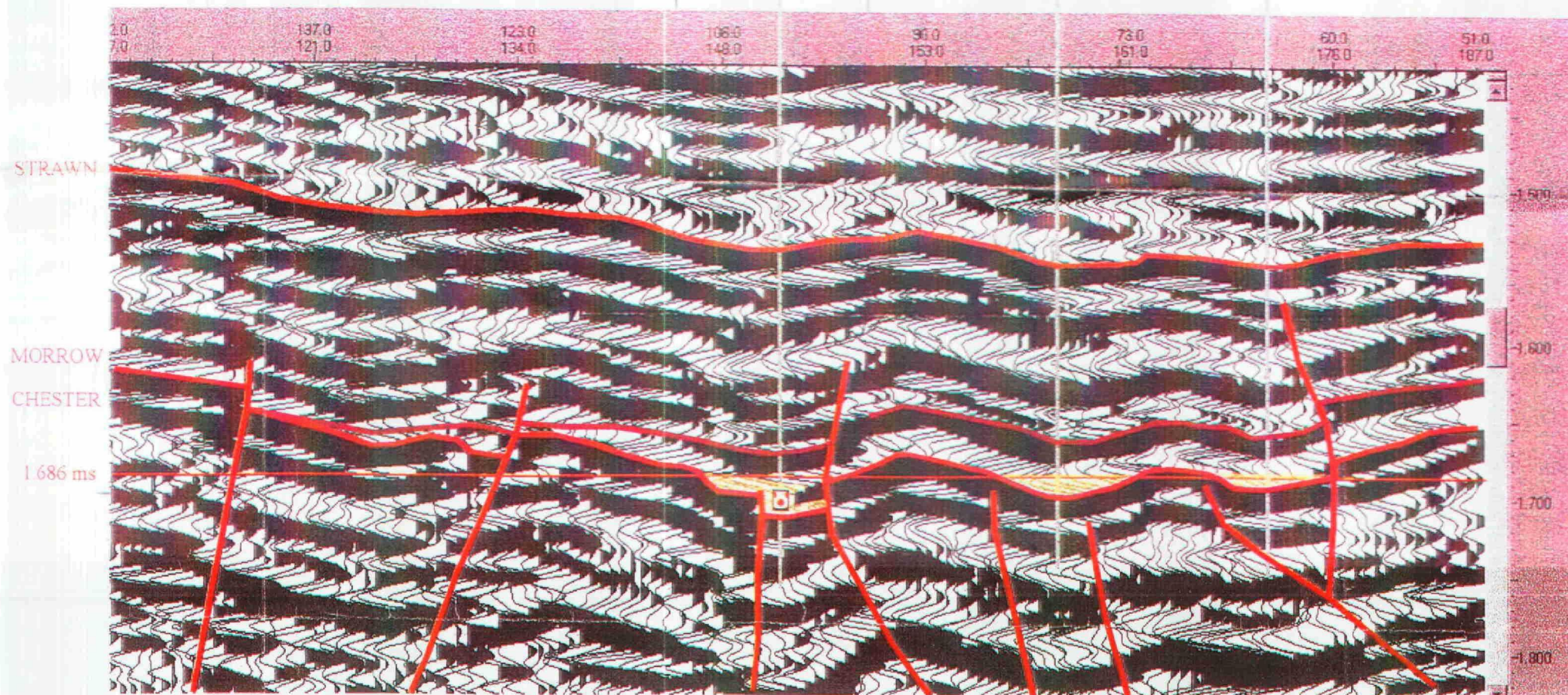
Section 25

South

TMBR/SHARP  
BLUE FIN 24 #1

TMBR/SHARP  
BLUE FIN 25 #1

NE/SW SEC. 25



Louis J. Mazzullo  
Certified Petroleum Geologist  
Albuquerque, New Mexico

5/14/2002

BEFORE THE  
OIL CONSERVATION COMMISSION  
Case No. 12816 Exhibit No. 18-F  
Submitted By:  
TMBR/Sharp Drilling  
Hearing Date: May 16, 2002

BIG TUNA PROSPECT  
Twp. 16S, Rge. 35E  
Lea County, New Mexico