

McGOWAN
N 1/2 SECTION 34, T4S R31E
ROOSEVELT CO., N.M.

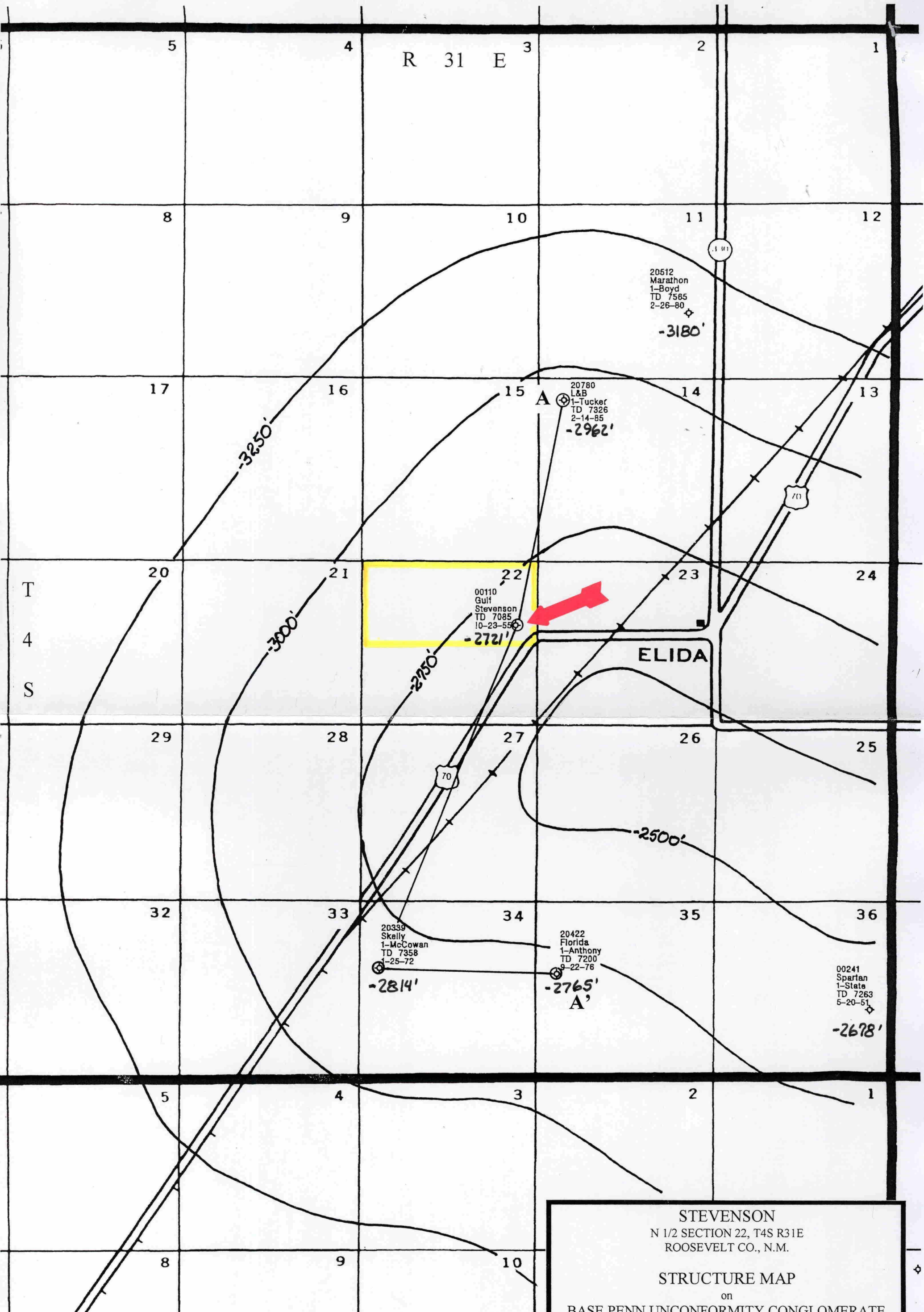
STRUCTURE MAP
on
BASE PENN UNCONFORMITY CONGLOMERATE

C.I.: 250'
SCALE: 1" = 2,640'

DATE: 5/23/02
BY: G.J.H.

CASE# _____
EXHIBIT# _____

BEFORE THE OIL CONSERVATION DIVISION
Santa Fe, New Mexico
Case No. 12886/12887 Exhibit No. 14
Submitted by:
PETROCAP, INC.
Hearing Date: June 27, 2002



STEVENSON
N 1/2 SECTION 22, T4S R31E
ROOSEVELT CO., N.M.

STRUCTURE MAP
on
BASE PENN UNCONFORMITY CONGLOMERATE

C.I.: 250'
SCALE: 1" = 2,640'

DATE: 5/23/02
BY: G.J.H.

CASE# _____
EXHIBIT# _____