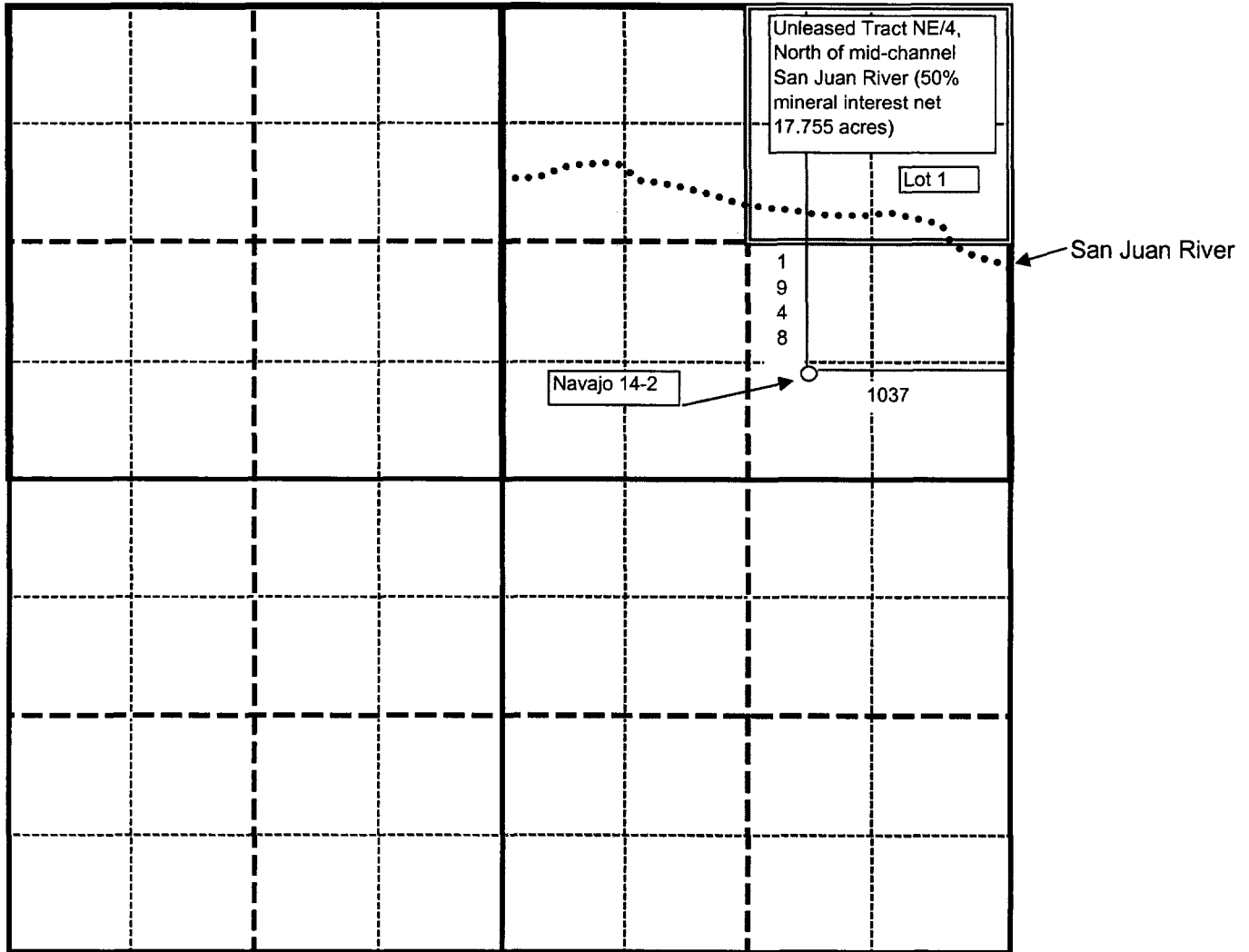


NAVAJO 14 #2 WELL - GAS
SECTION 14, TOWNSHIP 29 NORTH, RANGE 14 WEST, NMPM
BASIN FRUITLAND COAL (E/2)
WEST KUTZ PICTURED CLIFFS (NE/4)
PROPOSED DEPTH 975'



NE/4 PICTURED CLIFFS	166.47 Acres	
RICHARDSON PRODUCTION COMPANY LEASEHOLD INTEREST		89.3344%
UNLEASED MINERAL INTEREST TO BE FORCE POOLED		10.6656%

E/2 FRUITLAND COAL	326.47 Acres	
RICHARDSON PRODUCTION COMPANY LEASEHOLD INTEREST		94.5615%
UNLEASED MINERAL INTEREST TO BE FORCE POOLED		5.4385%

BEFORE THE
OIL CONSERVATION DIVISION
Case No.12910 Exhibit No. **2**
Submitted By:
Richardson Production
Hearing Date: August 22, 2002