

Submit 3 Copies To Appropriate District Office

**District I**

1625 N. French Dr., Hobbs, NM 88240

**District II**

811 South First, Artesia, NM 88210

**District III**

1000 Rio Brazos Rd., Aztec, NM 87410

**District IV**

1220 S. St. Francis Dr., Santa Fe, NM 87505

State of New Mexico  
Energy, Minerals and Natural Resources

**OIL CONSERVATION DIVISION**

1220 South St. Francis Dr.

Santa Fe, NM 87505

Form C-103

Revised March 25, 1999

WELL API NO.

30-045-24011

5. Indicate Type of Lease

STATE ☐

FEE ☒

6. State Oil & Gas Lease No.

7. Lease Name or Unit Agreement Name:

Crawford Gas Com "B"

8. Well No.

1 E

9. Pool name or Wildcat

Dakota & Chacra

**SUNDRY NOTICES AND REPORTS ON WELLS**

(DO NOT USE THIS FORM FOR PROPOSALS TO DRILL OR TO DEEPEN OR PLUG BACK TO A DIFFERENT RESERVOIR. USE "APPLICATION FOR PERMIT" (FORM C-101) FOR SUCH PROPOSALS.)

1. Type of Well:

Oil Well ☐

Gas Well ☒

Other

2. Name of Operator

BP America Production Company

3. Address of Operator

P.O. Box 3092 Houston, Tx 77253

4. Well Location

Unit Letter J 1520 feet from the South line and 1520 feet from the East line

Section 24

Township 29N

Range 12W

NMPM

San Juan

County

10. Elevation (Show whether DR, RKB, RT, GR, etc.)

5632' GR

11. Check Appropriate Box to Indicate Nature of Notice, Report or Other Data

**NOTICE OF INTENTION TO:**

PERFORM REMEDIAL WORK ☐ PLUG AND ABANDON ☐

TEMPORARILY ABANDON ☐ CHANGE PLANS ☐

PULL OR ALTER CASING ☐ MULTIPLE COMPLETION ☐

OTHER: Complete Otero Chacra & DHC with Dakota ☒

**SUBSEQUENT REPORT OF:**

REMEDIAL WORK ☐ ALTERING CASING ☐

COMMENCE DRILLING OPNS. ☐ PLUG AND ABANDONMENT ☐

CASING TEST AND CEMENT JOB ☐

OTHER: ☐

12. Describe proposed or completed operations. (Clearly state all pertinent details, and give pertinent dates, including estimated date of starting any proposed work). SEE RULE 1103. For Multiple Completions: Attach wellbore diagram of proposed completion or recompletion.

BP America Production Company requests permission to enter the Chacra pool and commingle production down hole with the existing Dakota pool as per the attached procedure.

The Basin Dakota (71599) & the Otero Chacra (82329) pools are Pre-Approved for Down hole Commingling per NMOCD ORDER NO. R-11363 effective 05/15/2000. Should the Working interest and Royalty interest owners between these two pools be different they will be notified of our intent by being supplied a copy of this application via certified mail return receipt requested.

Production is proposed to be allocated based on the subtraction method using the projected future decline for production from the Dakota Pool. That production shall serve as a base for production subtracted from the total production for the commingled well. The balance of the production will be attributed to the Chacra. Attached is the future production decline estimates for the Dakota. Commingling Production Downhole in the subject well from the proposed pools will not reduce the value of the total remaining production.

DHC 806A2

I hereby certify that the information above is true and complete to the best of my knowledge and belief.

SIGNATURE Cherry Hlava

TITLE Regulatory Analyst

DATE 06/05/02

Type or print name Cherry Hlava

Telephone No. 281-366-4081

(This space for State use)

APPROVED BY STEPHEN E. HAYDEN

TITLE DEPUTY OIL & GAS INSPECTOR, DIST. 8

DATE JUN 10 2002

Conditions of approval, if any:

BP America Production Company  
Compulsory Pooling-January 23, 2003  
S/2 of Section 24-T29N-R12W  
San Juan County  
Exhibit No. 2B

## GCU Well Work Procedure

---

<b>Well Name:</b>	<b>Crawford Gas Com B 1E</b>
<b>Date:</b>	3/8/02
<b>SAP Number</b>	X5-xxxx

---

**Objective:**

Recomplete in Chacra and downhole commingle with Dakota.

---

**Pertinent Information:**

Location:	Sec.24, T29N-R12W	Horizon:	Dakota/Chacra
County:	San Juan	API #:	30-045-24011
State:	New Mexico	Engr:	John Papageorge
Lease:		Phone:	W (281)366-5721
Meter No.	93178		H (713)464-5053
Well Flac:	84203601		

---

1. Check anchors. MIRU.
2. Check and record tubing, casing and bradenhead pressures.
3. Blow down wellhead, kill if necessary with 2% KCL water.
4. Nipple down wellhead, nipple up and pressure test BOP.
5. Tag for fill. Tally out of hole and LD tubing. Replace as necessary.
6. RIH with bit and scraper. Clean out to PBTD.
7. Set CIBP via tubing at approximately 6000'. Load hole with 2%KCL and pressure test plug.
8. Perforate the following interval with 2JSPF, 120 deg. phasing: **Chacra xxxx-xx, xxxx-xx'**.
9. RIH w/ packer on 2-7/8" buttress tubing frac string and set at approximately 1500'. RU frac equipment and fracture stimulate down tubing according to schedule 'A'.
10. Flow back frac load on 1/4" choke until well dies or stabilized flow rate is obtained. Release packer and POOH with frac string.
11. RIH with bit and tubing. Clean out fill. If sand feed-in has stabilized, drill out CIBP for downhole commingle. Clean out to PBTD.
12. TIH with 2 3/8" production tbg. Land tubing across Dakota at approximately 6350'. RDMO.
13. Test well to pipeline.

## Crawford Gas Com B 1E

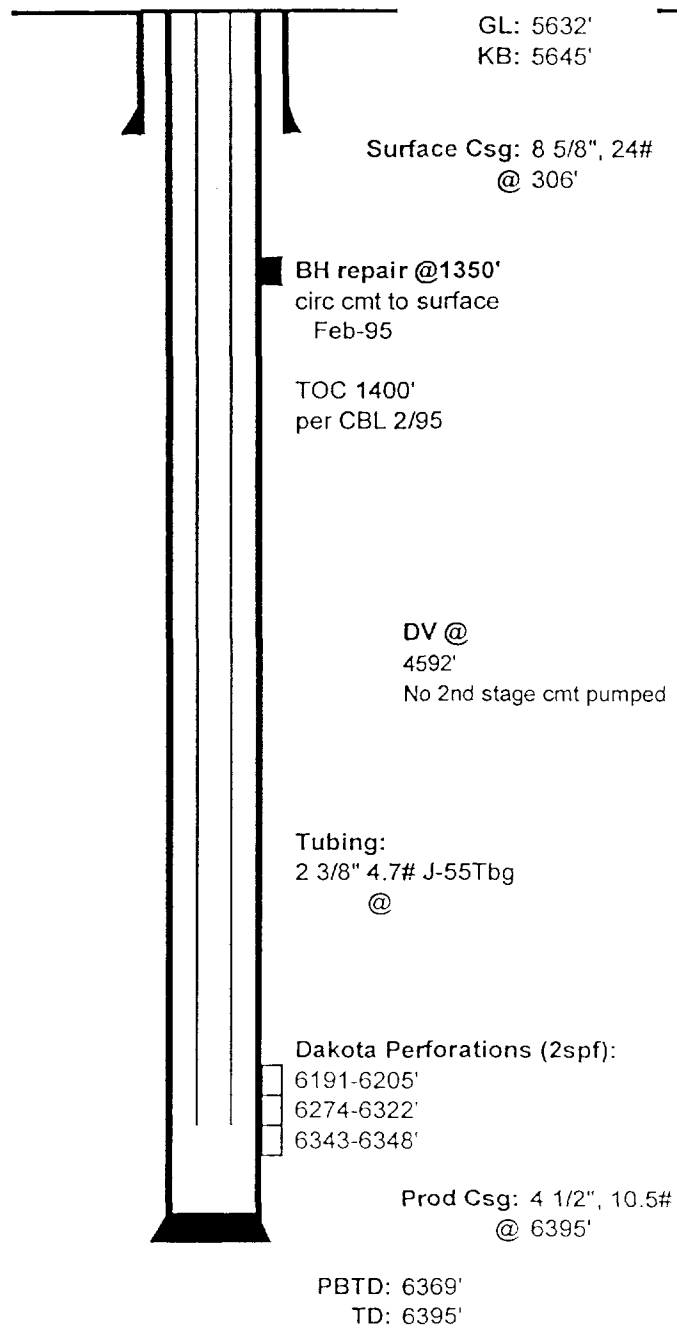
### Wellbore Diagram

1520' FSL x 1520' FEL

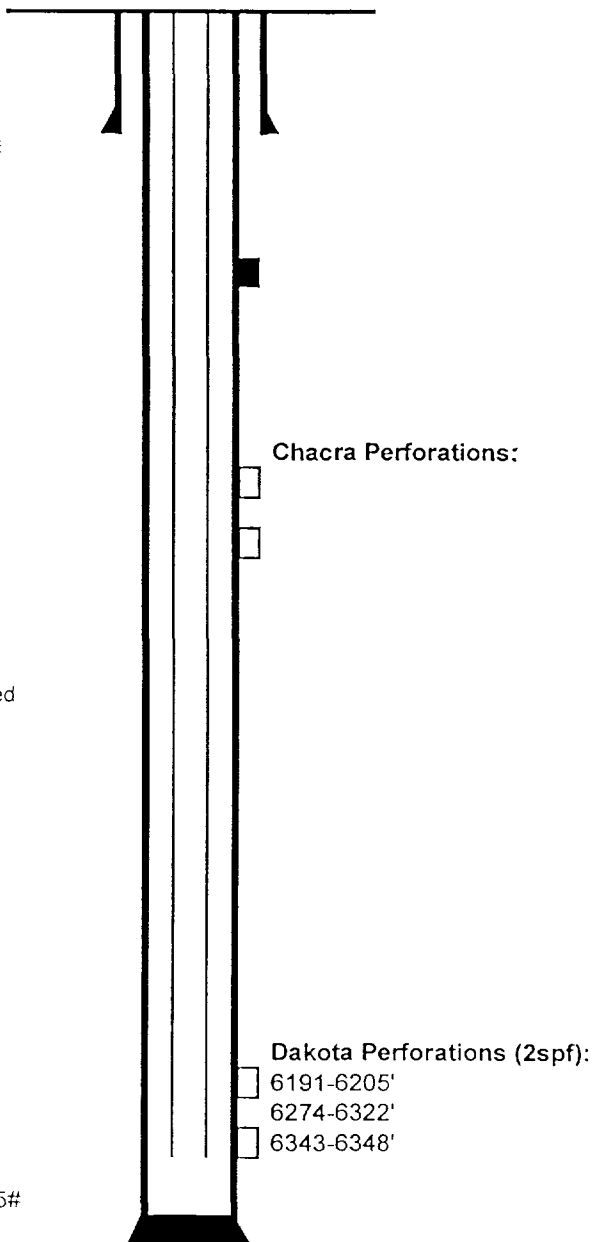
Sec. 24, T29N, R12W

San Juan Co., NM

#### Current Configuration



#### Proposed



**District I**  
 1625 N. French Dr., Hobbs, NM 88240  
**District II**  
 811 South First, Artesia, NM 88210  
**District III**  
 1000 Rio Brazos Rd., Aztec, NM 87410  
**District IV**  
 2040 South Pacheco, Santa Fe, NM 87505

State of New Mexico  
 Energy, Minerals & Natural Resources Department  
 OIL CONSERVATION DIVISION  
 2040 South Pacheco  
 Santa Fe, NM 87505

Form C-102  
 Revised August 15, 2000  
 Submit to Appropriate District Office  
 State Lease - 4 Copies  
 Fee Lease - 3 Copies

☐ AMENDED REPORT

### WELL LOCATION AND ACREAGE DEDICATION PLAT

<sup>1</sup> API Number <b>30-045-24011</b>	<sup>2</sup> Pool Code <b>82329 / 71599</b>	<sup>3</sup> Pool Name <b>Otero Chacra / Basin Dakota</b>
<sup>4</sup> Property Code <b>00572</b>	<sup>5</sup> Property Name <b>Crawford Gas Com B</b>	<sup>6</sup> Well Number <b>1 E</b>
<sup>7</sup> OGRID No. <b>000778</b>	<sup>8</sup> Operator Name <b>BP America Production Company</b>	<sup>9</sup> Elevation <b>5632'</b>

#### <sup>10</sup> Surface Location

UL or lot no.	Section	Township	Range	Lot Idn	Feet from the	North/South line	Feet from the	East/West line	County
<b>Unit J</b>	<b>24</b>	<b>29N</b>	<b>12W</b>		<b>1520'</b>	<b>South</b>	<b>1520'</b>	<b>East</b>	<b>San Juan</b>

#### <sup>11</sup> Bottom Hole Location If Different From Surface

UL or lot no.	Section	Township	Range	Lot Idn	Feet from the	North/South line	Feet from the	East/West line	County

<sup>12</sup> Dedicated Acres <b>160 CH</b> <b>320 DK</b>	<sup>13</sup> Joint or Infill	<sup>14</sup> Consolidation Code	<sup>15</sup> Order No.
---	-------------------------------	----------------------------------	-------------------------

NO ALLOWABLE WILL BE ASSIGNED TO THIS COMPLETION UNTIL ALL INTERESTS HAVE BEEN CONSOLIDATED OR A NON-STANDARD UNIT HAS BEEN APPROVED BY THE DIVISION

<sup>16</sup> 	<sup>17</sup> OPERATOR CERTIFICATION <i>I hereby certify that the information contained herein is true and complete to the best of my knowledge and belief.</i>  Signature <u>Cherry Hlava</u> Printed Name <u>Cherry Hlava</u> Title <u>Regulatory Analyst</u> Date <u>03/13/2002</u>
	<sup>18</sup> SURVEYOR CERTIFICATION <i>I hereby certify that the well location shown on this plat was plotted from field notes of actual surveys made by me or under my supervision, and that the same is true and correct to the best of my belief.</i>  Date of Survey <u>11/07/1979</u> Signature and Seal of Professional Surveyor:  <u>Fred B. Kerr Jr.</u> 3950 Certificate Number

Well Name      Crawford Gas Com B 1E

API#            300452401100

Basin Dakota

Date	Forecast - Mcf		DATE	Forecast - Mcf
1/1/2002	43		1/1/2006	28
2/1/2002	43		2/1/2006	27
3/1/2002	43		3/1/2006	27
4/1/2002	42		4/1/2006	27
5/1/2002	42		5/1/2006	27
6/1/2002	41		6/1/2006	26
7/1/2002	41		7/1/2006	26
8/1/2002	41		8/1/2006	26
9/1/2002	40		9/1/2006	26
10/1/2002	40		10/1/2006	25
11/1/2002	39		11/1/2006	25
12/1/2002	39		12/1/2006	25
1/1/2003	39		1/1/2007	25
2/1/2003	38		2/1/2007	24
3/1/2003	38		3/1/2007	24
4/1/2003	38		4/1/2007	24
5/1/2003	37		5/1/2007	24
6/1/2003	37		6/1/2007	24
7/1/2003	37		7/1/2007	23
8/1/2003	36		8/1/2007	23
9/1/2003	36		9/1/2007	23
10/1/2003	36		10/1/2007	23
11/1/2003	35		11/1/2007	22
12/1/2003	35		12/1/2007	22
1/1/2004	35		1/1/2008	22
2/1/2004	34		2/1/2008	22
3/1/2004	34		3/1/2008	22
4/1/2004	34		4/1/2008	21
5/1/2004	33		5/1/2008	21
6/1/2004	33		6/1/2008	21
7/1/2004	33		7/1/2008	21
8/1/2004	32		8/1/2008	21
9/1/2004	32		9/1/2008	20
10/1/2004	32		10/1/2008	20
11/1/2004	31		11/1/2008	20
12/1/2004	31		12/1/2008	20
1/1/2005	31			
2/1/2005	31			
3/1/2005	30			
4/1/2005	30			
5/1/2005	30			
6/1/2005	29			
7/1/2005	29			
8/1/2005	29			
9/1/2005	29			
10/1/2005	28			
11/1/2005	28			
12/1/2005	28			