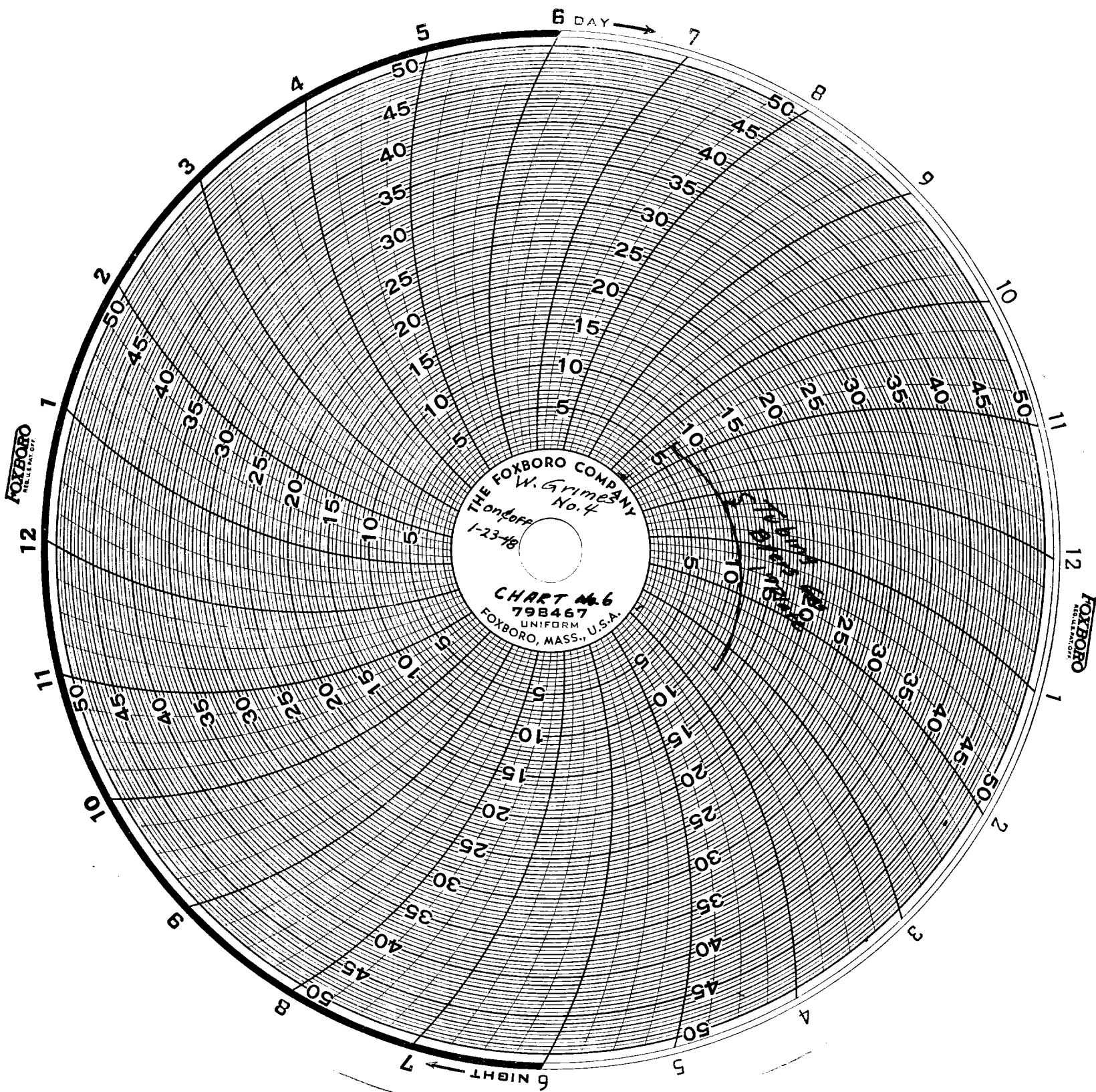


COPYRIGHT 1938 BY THE FOXBORO COMPANY





COPYRIGHT 1938 BY THE FOXBORO COMPANY

LARGE FORMAT  
EXHIBIT HAS  
BEEN REMOVED  
AND IS LOCATED  
IN THE NEXT FILE

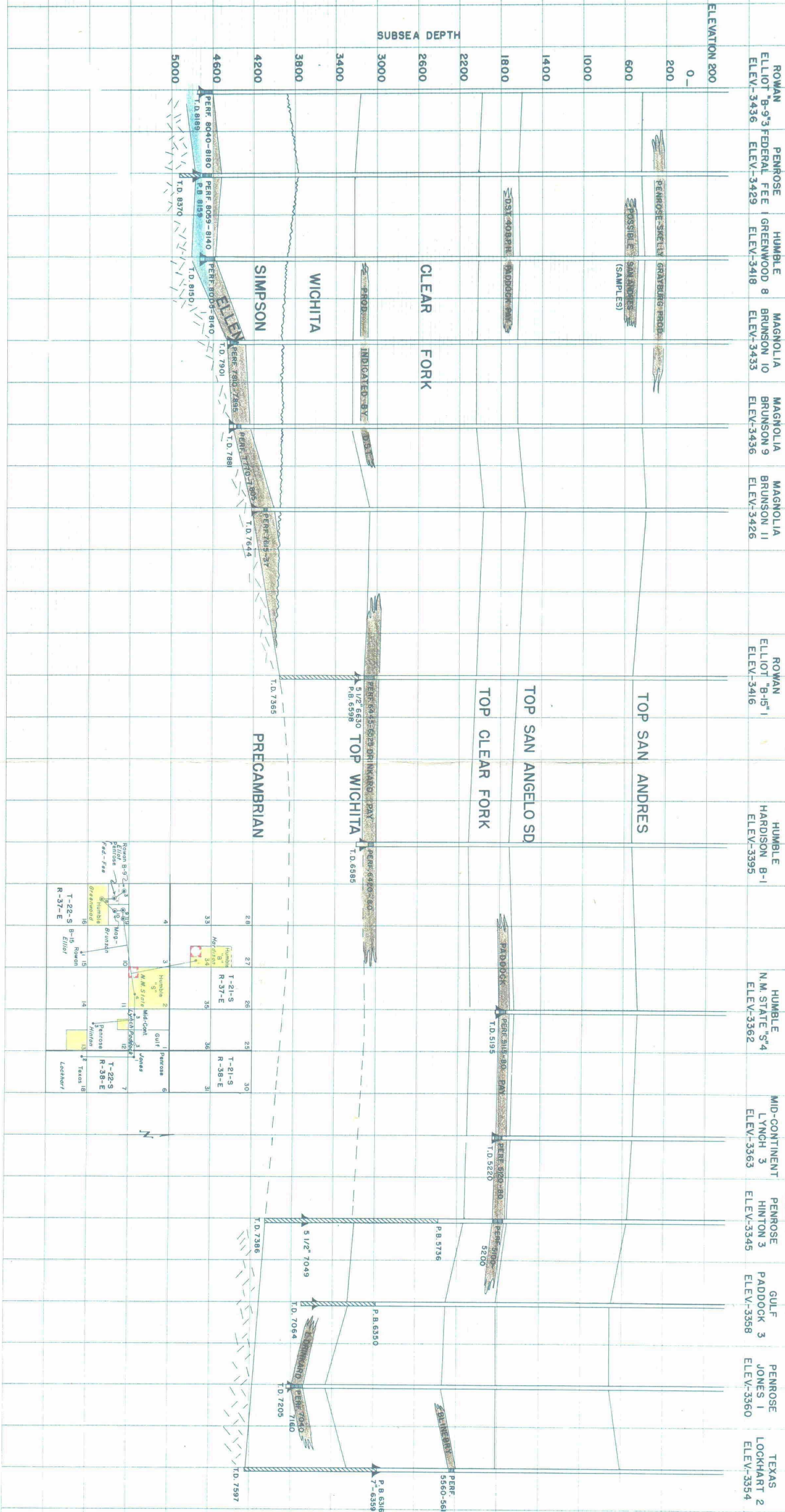
**COMPANY**

290C

## CASINO



SECTION SHOWING RELATIONSHIP OF PAYS IN BRUNSON-DRINKARD-PADDOCK AREA,  
LEA COUNTY, NEW MEXICO



Casld 92-94 inc.