

CORE LABORATORIES, INC.

Petroleum Reservoir Engineering
DALLAS

COMPANY AMERADA PETROLEUM CORP.
WELL EAVER NO. A-1
FIELD KNOWLES
COUNTY LEA STATE N. MEX.

DATE 4/11-5/8/50 FILE ML-264 S
CORES CHRIST. DIA ANALYSTS VBO:RCW:JH
REMARKS _____

COMPLETION COREGRAPH

These analyses, opinions or interpretations are based on observations and material supplied by the client to whom, and for whose exclusive and confidential use, this report is made. The interpretations or opinions expressed represent the best judgment of Core Laboratories, Inc. (all errors and omissions excepted); but Core Laboratories, Inc. and its officers and employees, assume no responsibility and make no warranty or representation as to the productivity, proper operation, or profitability of any oil, gas or other mineral well or sand in connection with which such report is used or relied upon.

AVERAGE

PERMEABILITY-MILLIDARCYS

50 40 30 20 10 0

POROSITY-%

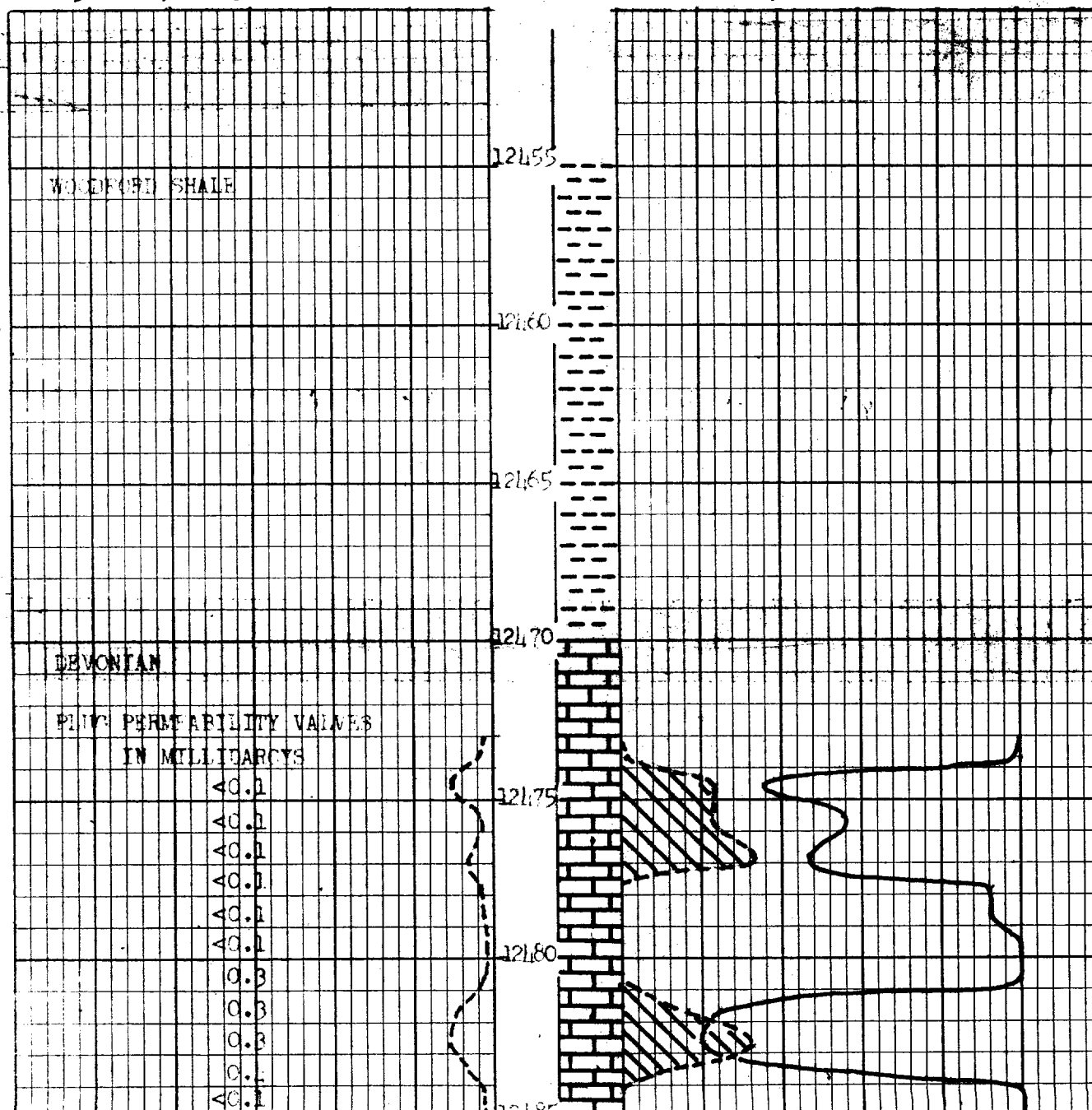
50 40 30 20 10 0

TOTAL WATER % PORE

0 20 40 60 80 100

OIL-% PORE SATURATION

0 20 40 60 80 100



LARGE FORMAT
EXHIBIT HAS
BEEN REMOVED
AND IS LOCATED
IN THE NEXT FILE

CASE No.

204 File #2

Large Exhibits
OCD

LARGE FORMAT
EXHIBIT HAS
BEEN REMOVED
AND IS LOCATED
IN THE NEXT FILE

LARGE FORMAT
EXHIBIT HAS
BEEN REMOVED
AND IS LOCATED
IN THE NEXT FILE

LARGE FORMAT
EXHIBIT HAS
BEEN REMOVED
AND IS LOCATED
IN THE NEXT FILE

LARGE FORMAT
EXHIBIT HAS
BEEN REMOVED
AND IS LOCATED
IN THE NEXT FILE

LARGE FORMAT
EXHIBIT HAS
BEEN REMOVED
AND IS LOCATED
IN THE NEXT FILE

LARGE FORMAT
EXHIBIT HAS
BEEN REMOVED
AND IS LOCATED
IN THE NEXT FILE

LARGE FORMAT
EXHIBIT HAS
BEEN REMOVED
AND IS LOCATED
IN THE NEXT FILE

LARGE FORMAT
EXHIBIT HAS
BEEN REMOVED
AND IS LOCATED
IN THE NEXT FILE

LARGE FORMAT
EXHIBIT HAS
BEEN REMOVED
AND IS LOCATED
IN THE NEXT FILE

LARGE FORMAT
EXHIBIT HAS
BEEN REMOVED
AND IS LOCATED
IN THE NEXT FILE

LARGE FORMAT
EXHIBIT HAS
BEEN REMOVED
AND IS LOCATED
IN THE NEXT FILE

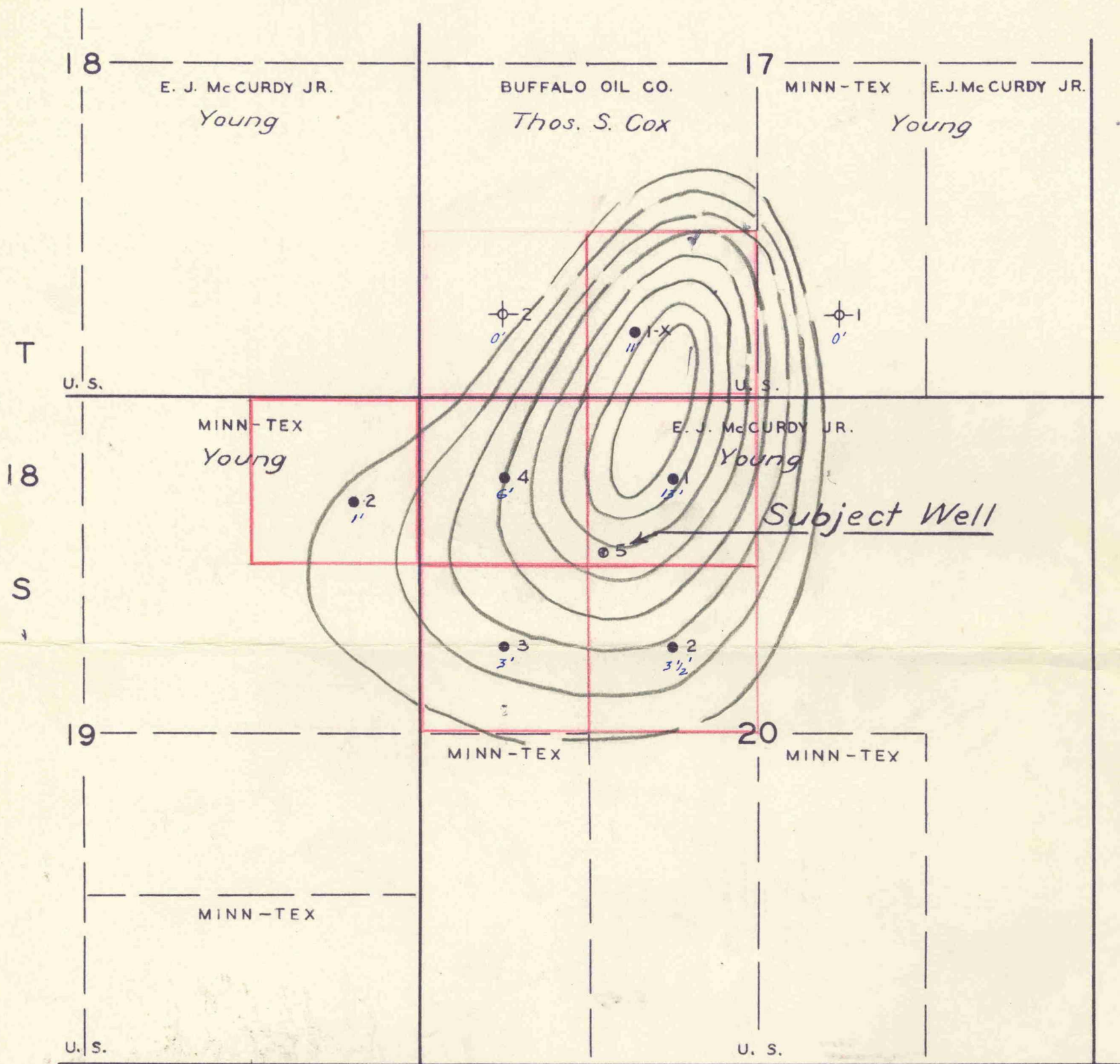
LARGE FORMAT
EXHIBIT HAS
BEEN REMOVED
AND IS LOCATED
IN THE NEXT FILE

LARGE FORMAT
EXHIBIT HAS
BEEN REMOVED
AND IS LOCATED
IN THE NEXT FILE

LARGE FORMAT
EXHIBIT HAS
BEEN REMOVED
AND IS LOCATED
IN THE NEXT FILE

LARGE FORMAT
EXHIBIT HAS
BEEN REMOVED
AND IS LOCATED
IN THE NEXT FILE

R 32 E



YOUNG POOL PAY THICKNESS

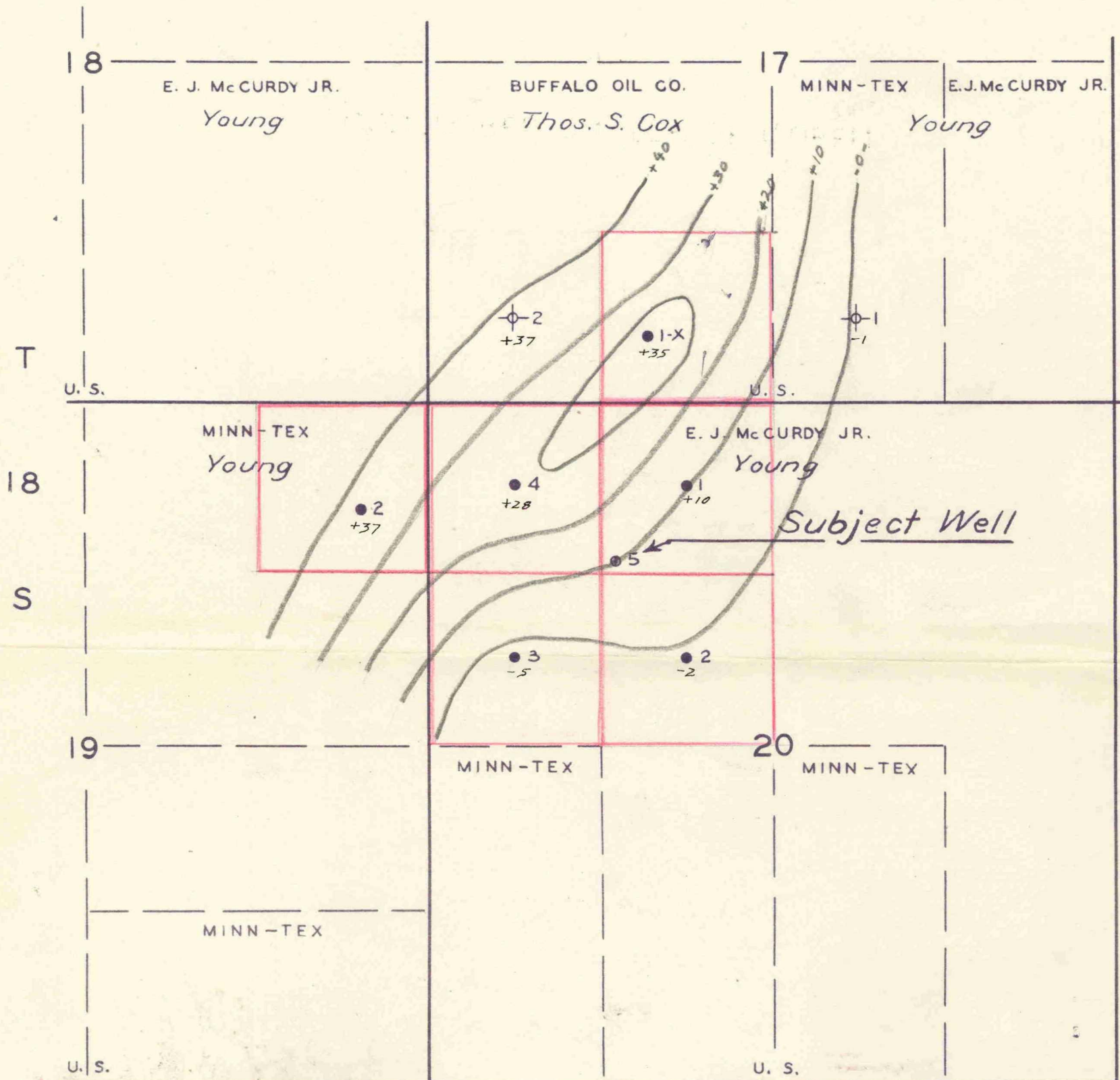
LEA COUNTY, NEW MEXICO.
DATE: JAN. 15, 1950.

SCALE: 1" = 1000'
PREPARED BY: R.L. GRAY

LEGEND

- 1 PRODUCING WELL
- ⊙ 1 DRILLING WELL
- ⊕ 1 DRY & ABANDONED
- 40 ACRE PRORATION UNIT

R 32 E



YOUNG POOL CONTOURED ON TOP OF QUEEN

LEA COUNTY, NEW MEXICO.

DATE: JAN. 15, 1950.

SCALE: 1"= 1000'

PREPARED BY: R.L. GRAY

LEGEND

● 1 PRODUCING WELL

⊕ 1 DRILLING WELL

⊕ 1 DRY & ABANDONED

□ 40 ACRE PRORATION UNIT

LANE RADIOACTIVITY LOG WELLS COMPANY

Exhibit B22

Location of Well	COMPANY: BUFFALO OIL CO. WELL: THOMAS S. COX #1X FILE: FIELD: YOUNG COUNTY: LEA STATE: N.M. LOCATION: SE/4 OF SW/4 OF SEC. 17-18S-32E	LOCATION: COUNTY: LEA STATE: N.M. WELL: THOMAS S. COX FILE: NO. 1X FIELD: YOUNG COMPANY: BUFFALO OIL CO.
LOG MEASURED FROM DERRICK FLOOR ELEVATION * DRILLING MEASURED FROM DERRICK F. ELEVATION * DERRICK FLOOR IS 2' ABOVE PERMANENT DATUM 5 1/2" BRADEN HEAD ELEVATION *		

RUN NUMBER	1	1		
TYPE OF LOG	GAMMA RAY	NEUTRON		
DATE	11-15-48	11-15-48		
COMPANY DEPTH SAND LINE	3787'	3787'		
MAXIMUM DEPTH REACHED	3774.5'	3774.5'		
WELL FLUID	OIL	OIL		
FLUID LEVEL	FULL	FULL		
MAXIMUM TEMPERATURE				
O.D. OF INSTRUMENT—INCHES	3 5/8	3 5/8		
SENSITIVITY REFERENCE	274	275		
RECORDED BY	KELLY AND	LITTLE		
WITNESSED BY	GRAY	GRAY		

CASING RECORD				OPEN HOLE RECORD	
RUN NO.	SIZE—IN.	WT.—LB.	INTERVAL	BIT SIZE—IN.	INTERVAL
1	8 5/8		SURFACE TO 1040'	6 1/4	3702' TO T.D.
1	7	20	SURFACE TO 3702'		TO
			TO		TO
			TO		TO
			TO		TO

REMARKS OR OTHER DATA

* ELEVATION NOT AVAILABLE.