

SETH AND MONTGOMERY  
ATTORNEYS AND COUNSELORS AT LAW  
III SAN FRANCISCO ST.  
SANTA FE, NEW MEXICO

J. O. SETH  
A. K. MONTGOMERY  
OLIVER SETH  
WM. FEDERICI  
JUSTIN T. REID

February 19, 1952.

Oil Conservation Commission  
Capitol Building  
Santa Fe, New Mexico.

*Case 541*

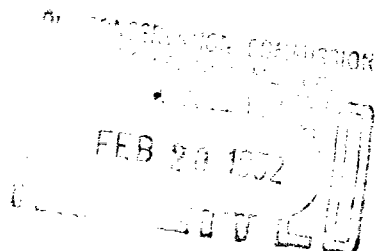
Gentlemen:

Yesterday when filing the application for a unit agreement on behalf of Amerada Petroleum Corporation and Gulf Oil Corporation I did not have sufficient copies of the unit agreement to attach a copy to the application in triplicate. The original had such copy attached and I enclose herewith two additional copies for your use in attaching to the other copies of the application filed.

Very truly yours,

*A. K. Montgomery*

AKM/rds  
Encs



KS

J. O. SETH  
A. K. MONTGOMERY  
OLIVER SETH  
WM. FEDERICI  
JUSTIN T. REID

SETH AND MONTGOMERY  
ATTORNEYS AND COUNSELORS AT LAW  
III SAN FRANCISCO ST.  
SANTA FE, NEW MEXICO

April 18, 1952

Oil Conservation Commission  
Capitol Building  
Santa Fe, New Mexico

Re: Case No. 348  
Order No. R-141  
Bagley Unit Agreement

Gentlemen:

Pursuant to the terms of the above order,  
we enclose herewith on behalf of Amerada Petroleum  
Corporation a photocopy of the executed Unit  
Agreement in this case.

Yours very truly,

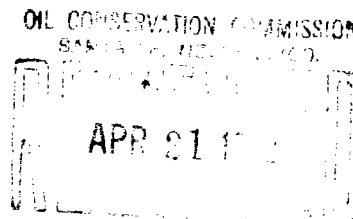
SETH AND MONTGOMERY

BY

*Justin T. Reid*

JTR/mfl

Enclosure



J. O. SETH  
A. K. MONTGOMERY  
OLIVER SETH  
WM. FEDERICI  
JUSTIN T. REID

SETH AND MONTGOMERY  
ATTORNEYS AND COUNSELORS AT LAW  
III SAN FRANCISCO ST.  
SANTA FE, NEW MEXICO

March 24, 1952.

Oil Conservation Commission  
Santa Fe, New Mexico

Re: Case No. 348

Gentlemen:

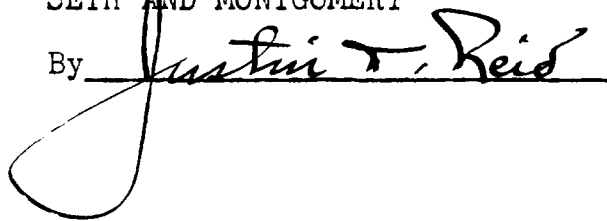
We are writing in behalf of Amerada Petroleum Corporation who is the applicant in the above case for an order approving the unit agreement embracing the E $\frac{1}{2}$ SE $\frac{1}{4}$  Section 34, Township 11 South, Range 33 East, N.M.P.M. Lea County, New Mexico.

At the hearing last Thursday some question was raised as to whether royalties from this acreage were distributed to two different State institutions. We have checked the records and can report on behalf of our client that all of the acreage is common school lands and so the problem of allocation to different institutions is not present in the case.

Yours very truly,

SETH AND MONTGOMERY

By

Justin T. Reid

JTR/mds  
CC: Mr. Booth Kellough  
P. O. Box 2040  
Tulsa, Oklahoma

