

Ex 2 Case 439
Moran

E. F. MCRAN, INC.

Owen No. 2 Well

Casing and Cement Program

Surface Casing - April 9, 1950
170' DFM 13 3/8" OD w/150 sacks cement

Intermediate Casing - April 17, 1950
2930' DFM 8 5/8" OD w/600 sacks 8% gel,
200 sacks Neat Cement
Temperature Survey 1350'

Oil String - June 2, 1950
7610' DFM 5 1/2" OD
1 St. Stage Cement Job
7610'-5728' w/ 350 sacks 2% gel
2nd Stage Cement Job
5728'-3153' w/525 sacks 2% gel

Bridging plug - Baker Model "K" Set at 6800' - 15 sacks
cement on top of plug - top of cement 6720'

Perforations

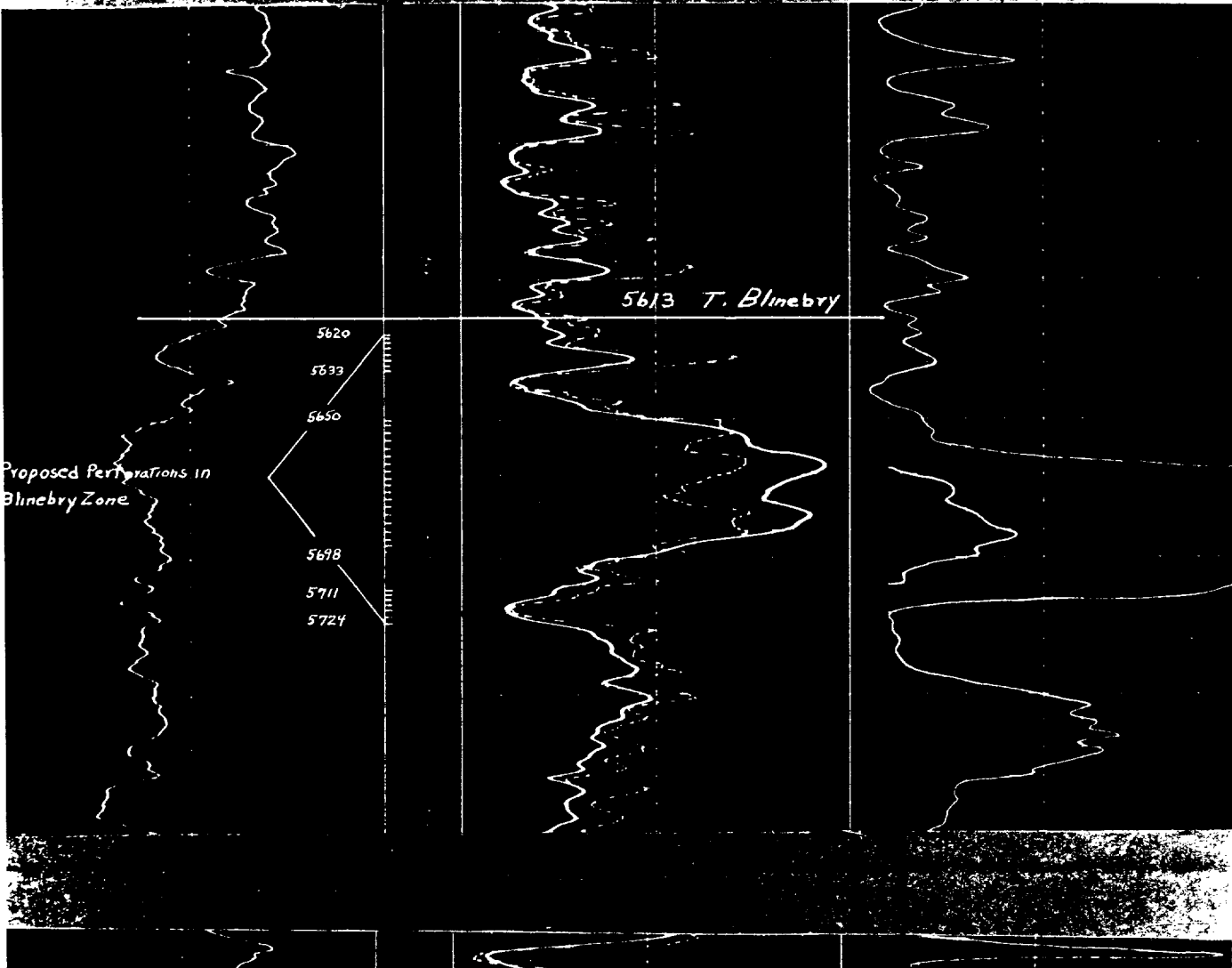
6560-6620' 60' 3 shots per ft. 180 holes
6630-6640' 10' 3 shots per ft. 30 holes

Packer Seat 6620'-6630'

SCHLUMBERGER

WELL SURVEYING CORPORATION

Location of Well 660' fr N/L 660' fr W/L SEC. 14 21S-37E	COMPANY: E. F. MORAN, INC. WELL: EVA OWEN #2 FIELD: DRINKARD LOCATION: SEC. 14 21S-37E COUNTY: LEA STATE: NEW MEXICO	COMPANY: E. F. MORAN, INC. COUNTY: LEA FIELD OR LOCATION: DRINKARD WELL: EVA OWEN #2
Elevation D.F.: 3442' K.B. or G.L.	FILING No.	



ILLEGIBLE

LARGE FORMAT
EXHIBIT HAS
BEEN REMOVED
AND IS LOCATED
IN THE NEXT FILE