



CORE LABORATORIES, INC.

Petroleum Reservoir Engineering

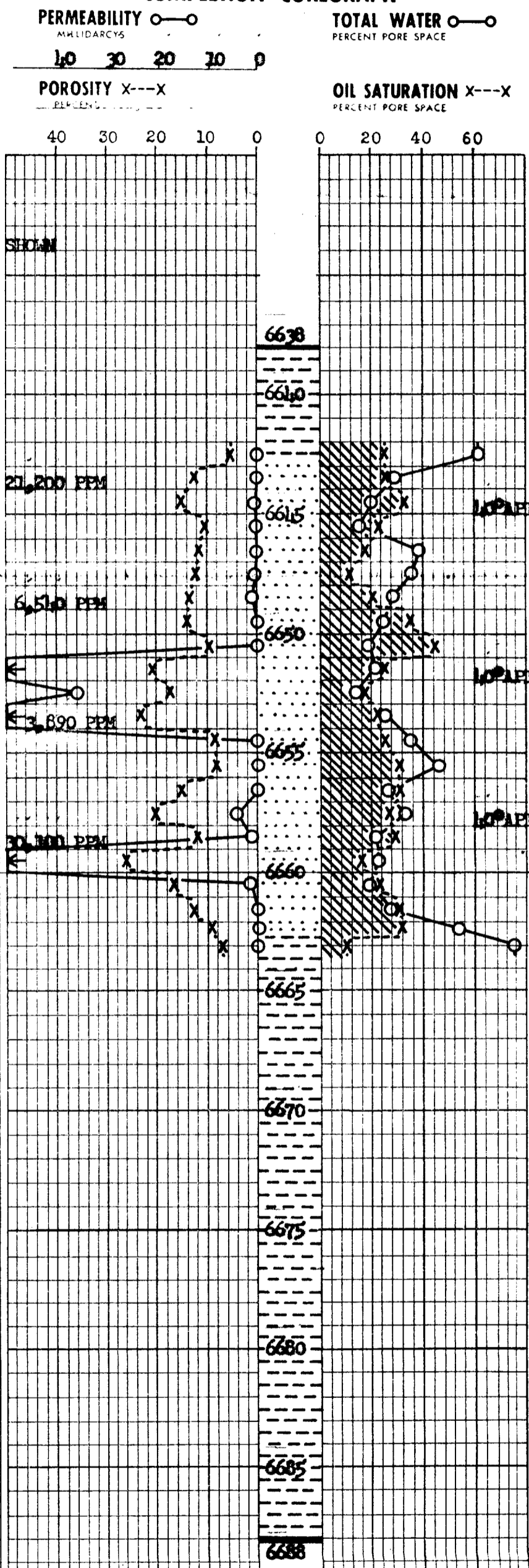
COMPANY LOWRY, ET AL. OPERATING ACCOUNT DATE JULY 25, 1952 FILE FNML - 56 FC
 WELL FEDERAL 22 - 15 - 207 CORES DIAMOND ANALYSTS LNV
 FIELD LARGO CANYON FORMATION TOCITO ELEVATION 6506' DP
 COUNTY RIO ARriba DRG. FLUID OIL EMULSION LOCATION SEC. 10-26N-6W
 STATE NEW MEXICO REMARKS SERVICE NO. 1

These analyses, opinions or interpretations are based on observations and material supplied by the client to whom, and for whose exclusive and confidential use, this report is made. The interpretations or opinions expressed represent the best judgment of Core Laboratories, Inc. (all errors and omissions excepted); but Core Laboratories, Inc. and its officers and employees, assume no responsibility and make no warranty or representations as to the productivity, proper operation, or profitability of any oil, gas or other mineral well or sand in connection with which such report is used or relied upon.

CORE ANALYSIS AND INTERPRETATION

SAMPLE NUMBER	DEPTH FEET	PERMEABILITY MILLIDARCYs	POROSITY PERCENT	RESIDUAL LIQUID SATURATION PERCENT PORE SPACE		PROBAB. PROD.
				OIL	TOTAL WATER	
LEGEND						
OIL GRAVITY AS SHOWN						
CHLORIDE PARTS PER MILLION AS SHOWN						
1	6612.5	0.0	5.7	21.5	61.4	
2	13.5	0.0	12.7	25.2	29.1	
3	14.5	0.3	15.0	32.6	20.0	OIL
4	15.5	0.1	10.5	22.9	15.2	OIL
5	16.5	0.1	11.7	17.1	31.4	OIL
6	17.5	0.2	12.8	11.7	35.1	OIL
7	18.5	1.0	13.8	21.0	28.3	OIL
8	19.5	0.0	11.1	31.7	21.8	
9	50.5	0.0	9.7	11.3	18.6	
10	51.5	1.3	21.0	25.7	21.9	OIL
11	52.5	36	17.5	17.7	13.7	OIL
12	53.5	205	23.4	22.2	25.6	OIL
13	54.5	0.0	8.6	25.6	31.9	
14	55.5	0.0	8.5	30.6	15.9	
15	56.5	0.0	15.2	30.9	26.3	
16	57.5	1.1	20.5	27.3	32.7	OIL
17	58.5	1.4	12.0	29.1	21.7	OIL
18	59.5	272	26.1	15.7	22.6	OIL
19	60.5	1.9	16.9	23.1	18.9	OIL
20	61.5	0.0	12.6	30.9	27.8	
21	62.3	0.0	9.2	16.3	53.3	
22	63.0	0.0	7.6	9.2	75.0	

COMPLETION COREGRAPH





CORE LABORATORIES, INC.

Petroleum Reservoir Engineering

COMPANY LOWRY, ET AL. DATE 11/6 - 11/15/51 FILE WELL - 36-20
 WELL FURNACE 1-13-132 CORES DIAMOND ANALYSTS ---
 FIELD WIDEN FORMATION DUBITO ELEVATION 6615 - 62
 COUNTY BIG BEND DRIG. FLUID WATER BASE MUD LOCATION 230.9-212-21
 STATE NEW MEXICO REMARKS SERVICE # 5

These analyses were made on samples that are based on laboratory procedures as applied to the material which was used for these analyses and are not intended to represent the actual conditions of the reservoir. The analyses were made on samples of the material which was used for these analyses and are not intended to represent the actual conditions of the reservoir. The analyses were made on samples of the material which was used for these analyses and are not intended to represent the actual conditions of the reservoir.

ILLEGIBLE

CORE ANALYSIS AND INTERPRETATION

COMPLETION COREGRAPH

SAMPLE NUMBER	DEPTH FEET	PERMEABILITY MILLIDARCS	POROSITY PERCENT	RESIDUAL LIQUID SATURATION PERCENT PORE SPACE		PROBABLE PROD.
				OIL	TOTAL WATER	
1	649.5	0.0	2.1	1.1	8.3	
2	50.5	0.0	6.2	5.9	67.7	
3	52.5	0.0	5.0	0.0	72.0	
4	52.5	0.0	6.7	0.0	52.8	
5	53.5	0.0	7.1	0.0	55.1	
6	54.5	0.0	6.7	6.0	19.3	
7	55.5	0.0	6.9	0.7	56.6	
8	56.5	0.0	6.3	2.5	73.0	
9	57.5	0.0	6.1	0.0	56.0	
10	58.5	0.0	6.0	5.9	0.3	
11	59.5	0.0	6.7	7.5	71.7	
12	60.5	0.0	6.2	2.3	70.0	
13	61.5	0.0	6.2	2.3	70.0	
14	62.5	0.0	6.1	2.3	70.0	
15	63.5	0.0	6.0	6.7	11.3	
16	64.5	0.0	6.3	7.0	3.2	
17	65.5	0.0	6.2	2.3	50.8	
18	66.5	0.0	4.7	0.9	0.2	
19	67.5	0.0	6.0	1.0	47.7	
20	68.5	0.0	6.0	2.8	70.1	
21	69.5	0.0	6.3	6.3	0.2	
22	70.5	0.0	0.3	1.3	59.2	
23	71.5	0.0	6.7	0.0	63.2	
24	72.5	0.0	6.2	0.0	75.1	
25	73.5	0.0	7.0	0.0	78.6	
26	74.5	0.0	9.3	0.0	51.6	
27	75.5	0.1	6.3	7.9	36.5	OIL
28	76.5	0.1	7.6	7.9	36.5	OIL
29	77.5	0.6	9.9	11.1	27.3	OIL
30	78.5	1.32	15.7	15.9	26.1	OIL
31	79.5	2.8	12.9	11.0	25.6	OIL
32	80.5	80	21.5	13.5	17.2	OIL
33	81.5	31.5	18.9	11.3	20.1	OIL
34	82.5	133	16.2	19.7	22.8	OIL
35	83.5	1.6	8.1	13.2	27.1	OIL
36	84.5	1.3	11.8	20.9	20.2	OIL
37	85.5	101	11.9	22.1	21.1	OIL
38	86.5	111	10.3	19.7	31.1	OIL
39	87.5	2.2	13.7	8.8	38.7	OIL
40	88.5	219	19.3	16.1	31.6	OIL
41	89.5	622	20.3	16.2	28.5	OIL
42	90.5	501	22.5	18.7	25.3	OIL
43	91.5	97	11.8	16.9	22.3	OIL
44	92.5	0.7	11.9	10.1	39.5	*
45	93.5	0.1	10.3	5.8	51.3	*
46	94.5	0.6	11.6	9.5	39.7	*
47	95.5	0.0	5.3	7.5	32.3	
48	96.5	0.0	6.2	0.0	61.0	
49	97.5	0.0	6.2	6.5	61.6	
50	98.5	0.0	9.3	1.3	15.2	
51	99.5	0.3	2.1	11.7	11.7	*
52	6701.5	0.1	10.0	11.0	13.0	*
53	02.5	0.0	6.2	2.8	51.1	
54	03.5	0.1	11.3	15.9	30.1	*
55	04.5	0.1	9.2	21.7	39.0	*
56	05.5	0.0	7.0	0.0	72.1	
57	06.5	0.2	11.7	12.0	27.1	OIL
58	07.5	0.5	11.9	28.6	35.3	OIL
59	08.5	0.3	10.8	17.6	25.0	OIL
60	09.5	0.0	5.2	13.7	13.7	
61	10.5	0.7	12.2	18.0	23.0	OIL
62	11.5	0.7	13.3	16.5	28.6	OIL
63	12.5	2.1	13.8	10.1	31.8	OIL
64	13.5	2.5	13.1	13.7	22.9	OIL
65	14.5	0.2	12.1	17.1	17.1	OIL
66	15.5	0.1	7.9	20.2	20.2	OIL
67	6716.5	0.0	1.2	11.6	15.8	

