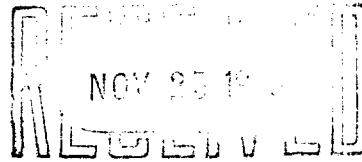


OIL CONSERVATION COMMISSION  
STATE OF NEW MEXICO  
SANTA FE, NEW MEXICO

OIL CONSERVATION COMMISSION  
SANTA FE, NEW MEXICO.



*Case*  
*615*

Re: IN THE MATTER OF SKELLY OIL  
COMPANY FOR APPROVAL OF AN  
UNORTHODOX GAS UNIT EMBRAC-  
ING 240 CONTIGUOUS ACRES IN  
THE JALCO GAS POOL, LEA COUNTY  
NEW MEXICO

Gentlemen:

Comes now SKELLY OIL COMPANY, a Delaware corporation with offices in Tulsa, Oklahoma, hereby petitioning the New Mexico Oil Conservation Commission for approval of an unorthodox gas proration unit lying wholly within the limits of the Jalco Gas Pool, namely the  $SE\frac{1}{4}$  and  $E/2, SW\frac{1}{4}$  of Section 31, T 24 S, R 37 E., N.M.P.M., Lea County, New Mexico, and in support thereof does state:

1. That the petitioner is the sole owner of all leases on the 240 acres confined by the boundaries of the  $SE\frac{1}{4}$  and  $E/2, SW\frac{1}{4}$  of Section 31, T 24 S, R 37 E., N.M.P.M., and concerns but a single royalty owner.

2. That the petitioner's J. W. Sherrell Well No. 5 is located 2172' from the West and 990' from the South boundaries of the section, and is completed within the vertical limits of the Jalco Gas Pool as defined by the New Mexico Oil Conservation Commission.

3. That the petitioner's lease is entirely surrounded by producing gas wells in both the Jalco and Langmat Gas Pools and is, therefore, itself capable of production.

4. That a plat showing the above described lands and all offset properties indicating well locations and lease ownership to the best of our knowledge is hereto attached.

5. That no gas well exists in the  $SE\frac{1}{4}$  of Section 31 and, although capable of production, that portion of petitioner's lease will be drained unless that acreage is assigned to a producing well.

Wherefor the petitioner requests that, in the interest of conservation and protection of correlative rights, the Commission grant an exception to Rule 7(a), Order No. R-368-A, as provided therein, by which the petitioner may operate the above described lands as a single unit.

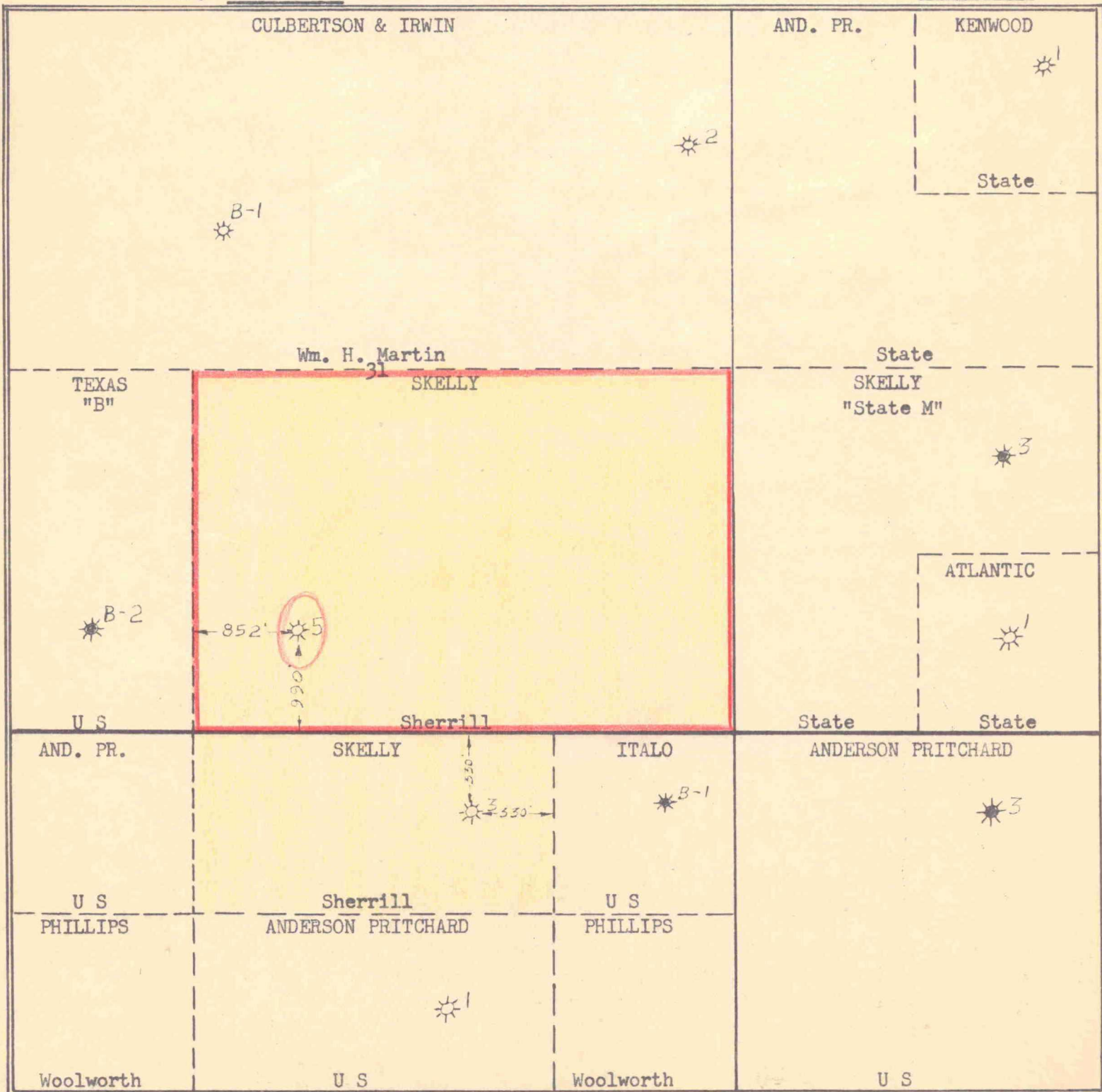
Respectfully submitted,  
SKELLY OIL COMPANY

*J. N. Dunlavy*  
J. N. Dunlavy

# SKELLY OIL COMPANY

Case No. 615

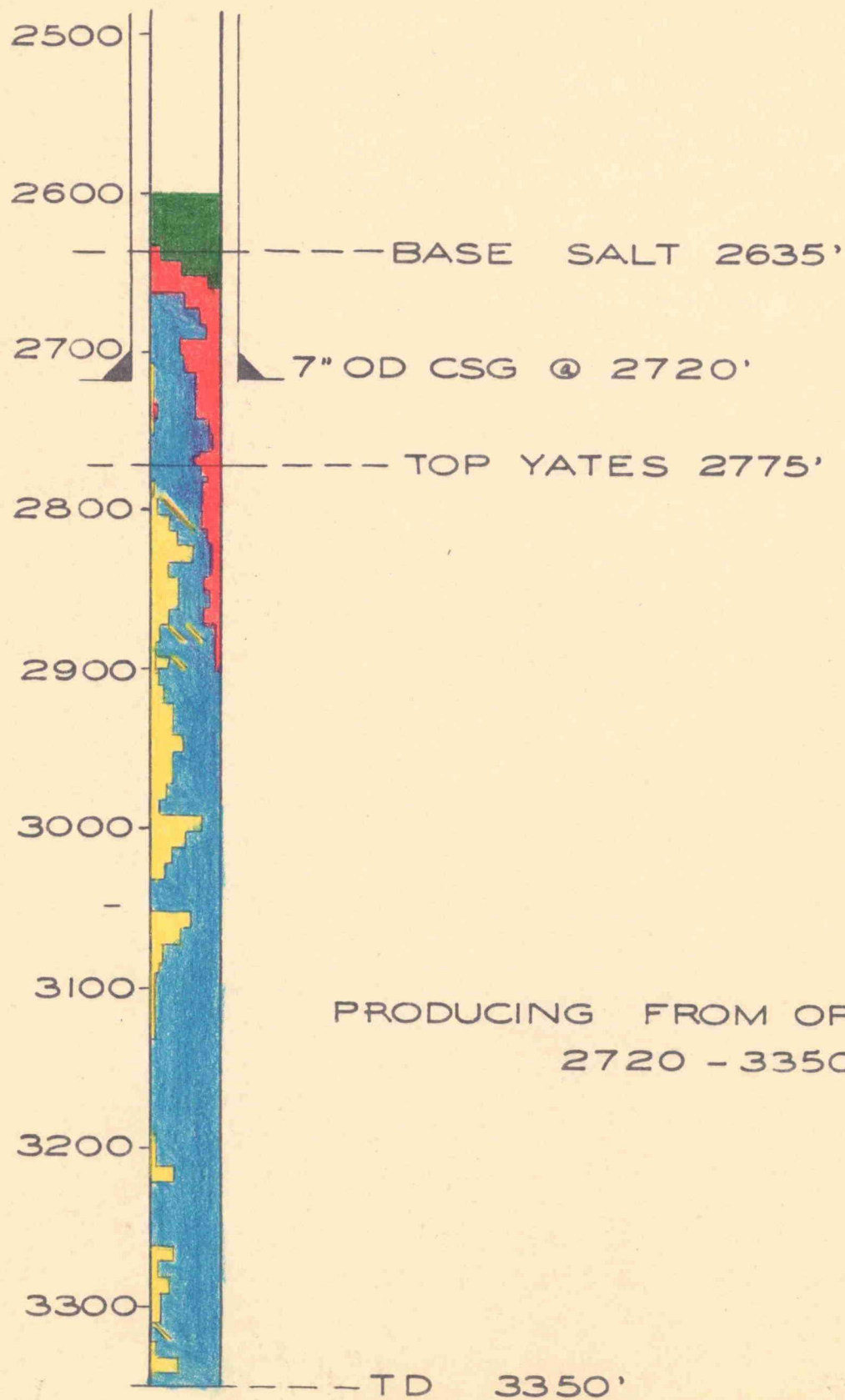
Exhibit No. \_\_\_\_\_







# SHERRELL No 5

## SAMPLE LOG

EXHIBIT 3  
CASE 615



### LEGEND

SALT	
ANHY.	
SAND	
DOLO.	

OIL CONSERVATION COMMISSION

P. O. BOX 871

SANTA FE, NEW MEXICO

Dec 17 1953 Hearing - CROSS FILE: Re Cases 613 - 626, incl.

In File Case 613, note Shell Oil Company statement, which was to  
be applied to Cases 613 - 626, incl.

C

n



# SKELLY OIL COMPANY

## PRODUCTION DEPARTMENT

J. S. FREEMAN  
VICE PRESIDENT

E. A. JENKINS  
GENERAL SUPERINTENDENT

TULSA 2, OKLAHOMA

January 29, 1954

P. WHITMORE  
CHIEF PETROLEUM ENGINEER

G. W. SELINGER  
PRORATION ATTORNEY

J. H. MCCULLOCH  
CHIEF CLERK

Re: Texas Company - Fristoe NCT-4 "B" No. 2  
Section 31-24S-37E, Jalco Gas Pool,  
Lea County, New Mexico

The Texas Company  
Box 1720  
Fort Worth, Texas

Gentlemen:

In line with our policy of not signing waivers for offsets, we regret that we are unable to give you such a waiver. However, we wish to call to the attention of the Commission and the other offset operators the fact that at the December hearing in Case 615 we requested the assignment of the E/2 of the SW/4 of Section 31 to our No. 5 Sherrell gas well, and that with two gas wells on the governmental quarter section it is obvious that The Texas Company is entitled to an exception for its Fristoe NCT-4 "B" Well No. 2 on an 80 acre basis.

Therefore, should you bring this up at a hearing before the Commission, we wish to advise that we would have no objections and would, in fact, urge the Commission to grant you the relief sought.

Yours very truly,

(Signed) GEORGE W. SELINGER

George W. Selinger

GWS:dd

cc: New Mexico Oil Conservation Commission, Santa Fe, New Mexico  
Southern California Pet. Co., Box 172, Midland, Texas  
Continental Oil Co., 1710 Fair Bldg., Fort Worth, Texas  
Anderson-Prichard Oil Corp., Box 337, Monument, New Mexico  
Cities Service Oil Company, Drawer G, Hobbs, New Mexico  
Shell Oil Company, Box 1509, Midland, Texas