

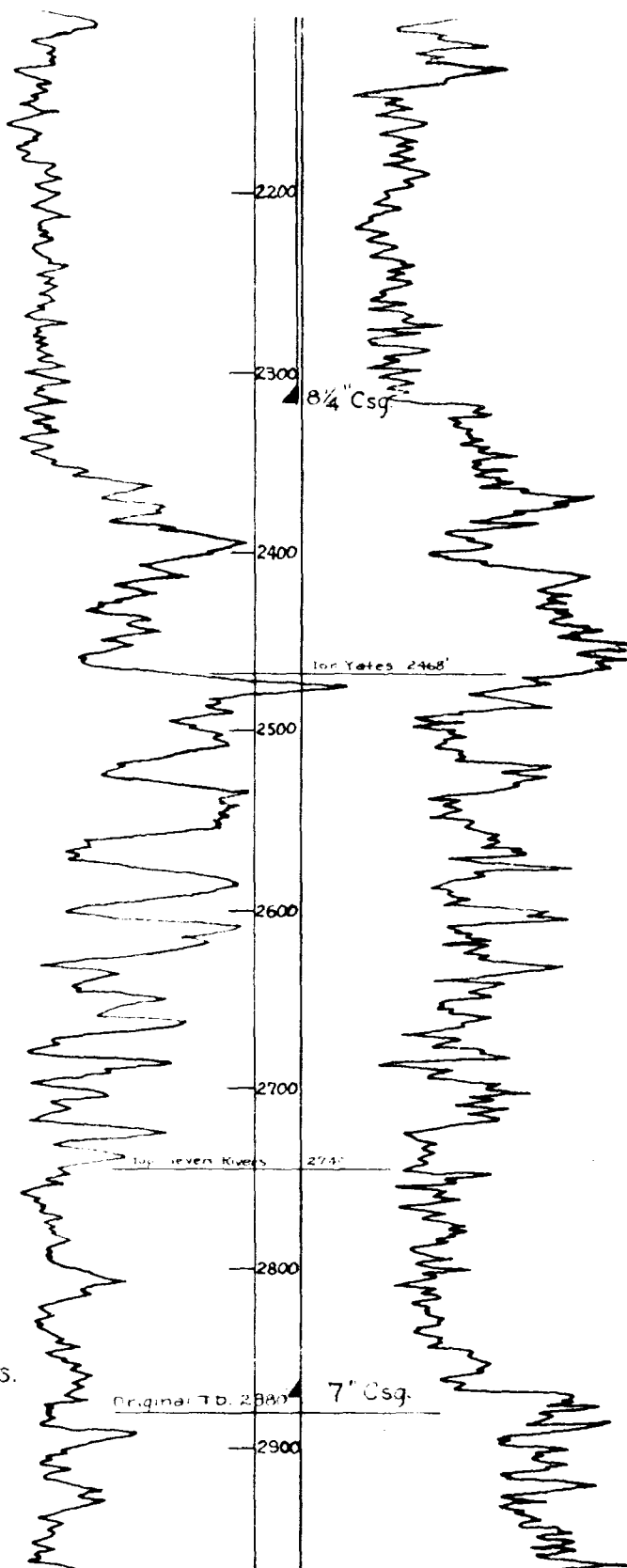
BEFORE THE
OIL CONSERVATION COMMISSION
SANTA FE, NEW MEXICO
Continental EXHIBIT No. 23
CASE 673
5-10-54

Continental Oil Company

Ida Hendricks No. 1

Sec. 33, Blk. 26, PSL Sur., Winkler Co., Tex.

Elev. 2837'



Comp 5-6-28 @ 2880' TD, IP 240 Bbls.
oil/hr., no water, from open hole
2316-2880'.

In October, 1930, tested 30 Bbls.
oil and 1500 Bbls. water per day.

On 10-25-30, deepened to 2973' and
7" casing set @ 2870', for 300 Bbls.
oil, no water, per day.

TD 2973' *CONOCO*
EXH. No 23

CONTINENTAL OIL COMPANY

PROPOSAL ON UNITS

(c) The allocation to a pool remaining after subtracting the capacities of marginal units shall be divided and allocated ratably among the non-marginal units in the amount that the acreage contained in each unit bears to the total acreage allotted to such non-marginal units; provided that for this purpose standard units as defined in Rule 602 above shall be deemed to contain 160 acres. For purposes of assigning allowables to gas well, the unit of proration shall consist of not less than 160 acres nor more than 640 acres. More than one proration unit may be assigned to a gas well and the allowables assigned said well may be increased proportionately provided that:

(1) All acreage in such units may reasonably be presumed to be productive of gas; and

(2) the multiple unit so formed shall not have an overall length or width exceeding 5280 feet; and

(3) the well to which such additional units are assigned shall be located not closer to any boundary of such pooled units than the distance represented by 25% of the length of the longer of the two boundaries of said pooled unit which are adjacent to said first mentioned boundary. Provided further that where three proration units are pooled the well shall not be located more than 1320 feet from the nearest boundary of any unit so pooled.

ILLEGIBLE

LARGE FORMAT
EXHIBIT HAS
BEEN REMOVED
AND IS LOCATED
IN THE NEXT FILE