



IN REPLY REFER TO:

UNITED STATES
DEPARTMENT OF THE INTERIOR
GEOLOGICAL SURVEY

P. O. Box 6721
Roswell, New Mexico

May 12, 1954

Mr. John E. Cochran, Jr.
Carper Building
Artesia, New Mexico

Dear Mr. Cochran:

Reference is made to the application of Kewanee Oil Company to Oil Conservation Commission of New Mexico requesting permission to drill three unorthodox locations in T. 17 S., R. 32 E., N.M.P.M., Pearsall and Maljamar pools, Lea County, New Mexico, which locations are described as follows:

<u>Well No.</u>	<u>Location</u>	<u>Lease No.</u>
6 Pearsall "BX"	1345'/N & 1295'/E sec. 34	LC 058514
14 Pearsall "A"	1345'/N & 2615'/E sec. 33	LC 059001
37 Baish "B"	1345'/S & 1345'/E sec. 27	LC 057210

No objection is offered by this office to the proposed locations or to the proposed method of completion. However, upon approval of the unorthodox locations by the Oil Conservation Commission, the usual Sundry Notices must be submitted to the District Engineer, Geological Survey at Artesia for approval in accordance with the "Oil and Gas Operating Regulations" revised May 25, 1942.

Very truly yours,

R. E. Canfield

R. E. CANFIELD
Acting Regional Oil and Gas Supervisor

Copy to: John E. Cochran, Jr. 2

BEFORE THE
OIL CONSERVATION COMMISSION
SANTA FE, NEW MEXICO

X *Kewanee* EXHIBIT No. 3
CASE 705

KEWANEE OIL COMPANY
PROPOSED RED SAND DEVELOPMENT
WELL

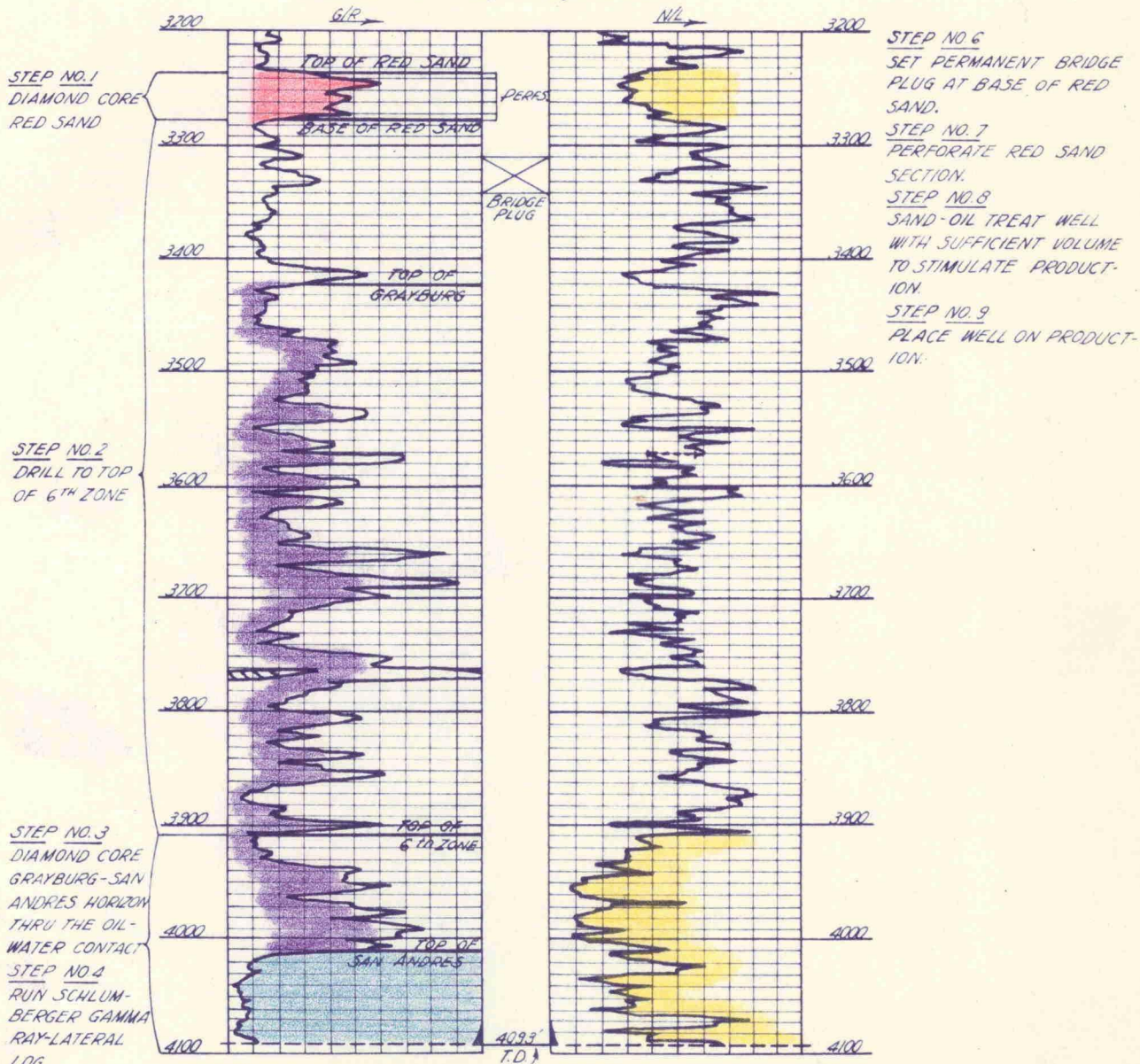
PEARSAL POOL, LEA COUNTY, NEW MEX.

LEASE: PEARSALL A

WELL NO: 14 R

LOCATION: 1345' FNL & 2615' FEL

SECTION 33, T17S, R32E



STEP NO. 2
DRILL TO TOP
OF 6TH ZONE

STEP NO. 3
DIAMOND CORE
GRAYBURG-SAN
ANDRES HORIZON
THRU THE OIL-
WATER CONTACT
STEP NO. 4
RUN SCHLUM-
BERGER GAMMA
RAY-LATERAL
LOG

STEP NO. 5
SET 5 1/2" CSG. THRU
MALJAMAR PAY AND
USE SUFFICIENT
CEMENT TO PROTECT
ALL PAYS.

STEP NO. 6
SET PERMANENT BRIDGE
PLUG AT BASE OF RED
SAND.
STEP NO. 7
PERFORATE RED SAND
SECTION.
STEP NO. 8
SAND-OIL TREAT WELL
WITH SUFFICIENT VOLUME
TO STIMULATE PRODUCT-
ION.
STEP NO. 9
PLACE WELL ON PRODUCT-
ION.

BEFORE THE
OIL CONS. C. M. 1310.
SANTA FE, NEW MEX.

Kewanee EXHIBIT NO. 2
CASE 705