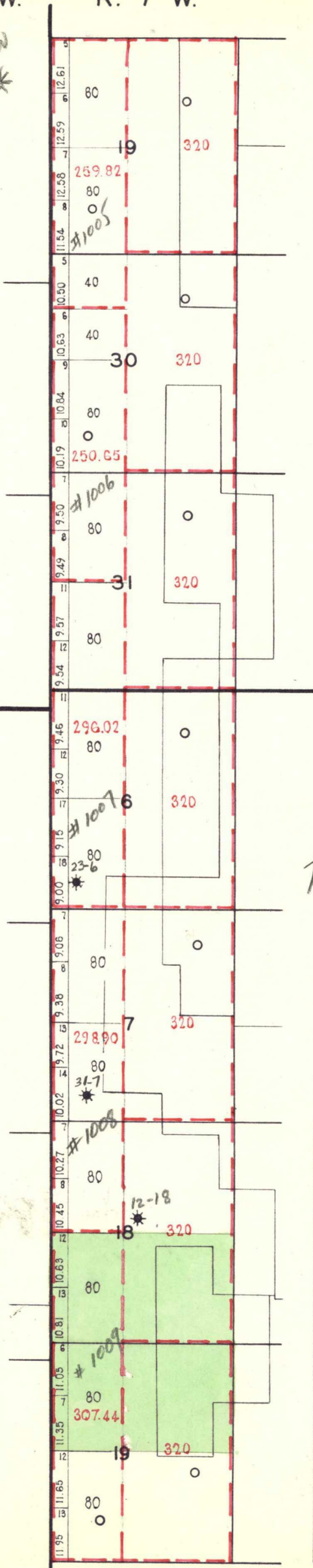


R. 8 W. R. 7 W.

PNN  
\*

T.  
31  
N.

T.  
30  
N.



T31 N  
No locations below 6139 elev.  
level of water @ 6100

T30 N  
Cores #1005 thru 1009  
app. Ex #1

—PORTION OF—  
**NORTHEAST  
BLANCO  
UNIT**  
**SAN JUAN & RIO ARRIBA  
COUNTIES**  
**NEW MEXICO**

- Completed Oil Well
- Location or Drilling Well
- ◇ Dry Hole
- ✕ Abandoned Location
- \* Gas Well

SCALE: 1" = 3000'  DAM SITE