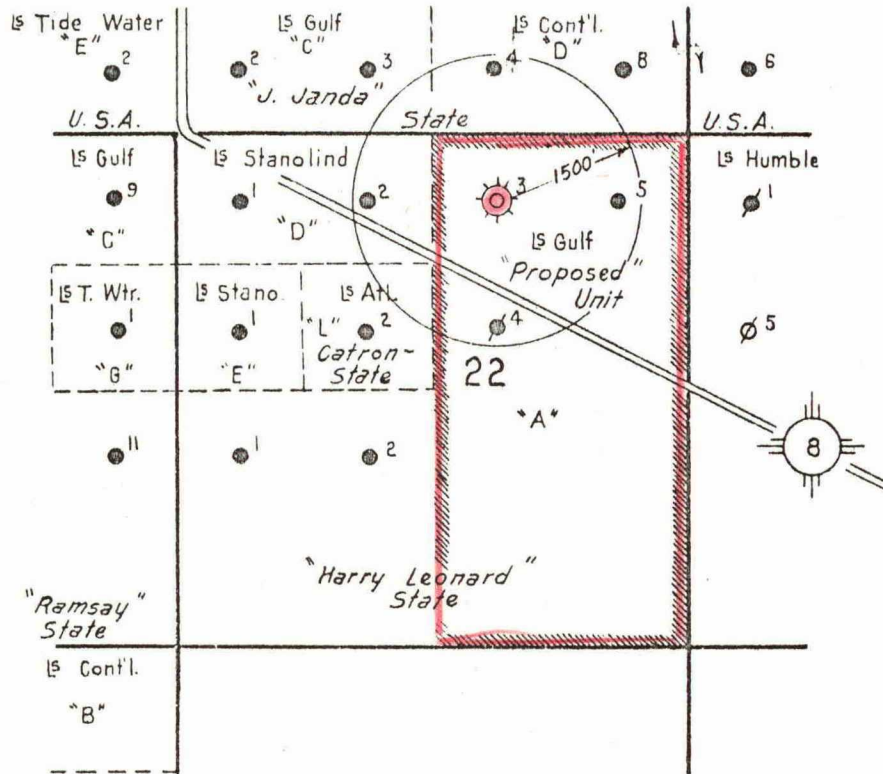


R-36-E

T
21
S



GULF OIL CORPORATION
FORT WORTH PRODUCTION DIVISION
Scale 1" = 2,000'

Plat Accompanying Application for
320-Acre Non-Standard Gas Unit

Gulf - Harry Leonard "A" Lease

BEFORE THE
OIL CONSERVATION COMMISSION
SANTA FE, NEW MEXICO
Gulf EXHIBIT No. 1
CASE 1178