



RECEIVED BY THE COMMISSION
OCT 11 1936, NEW MEXICO
EXHIBIT No. 3
1363

You Too, Can Increase YOUR PRODUCTION WITH THE NEW **TOMMY'S VACUUM PUMP** PATENT PENDING

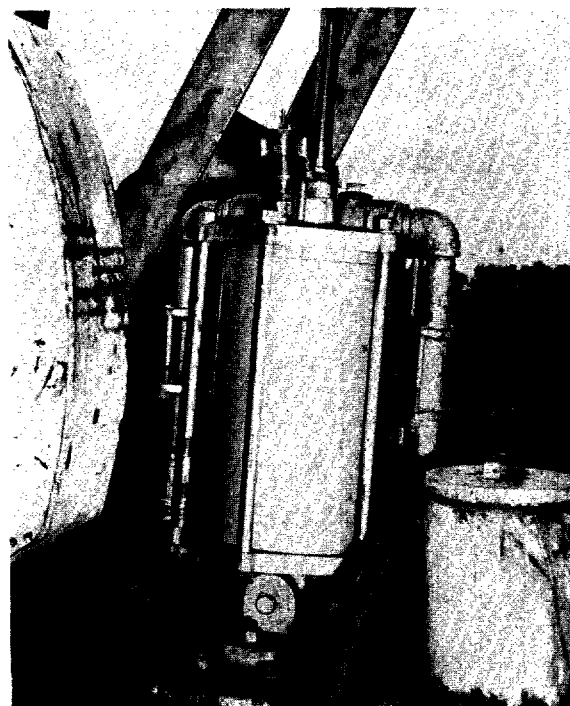
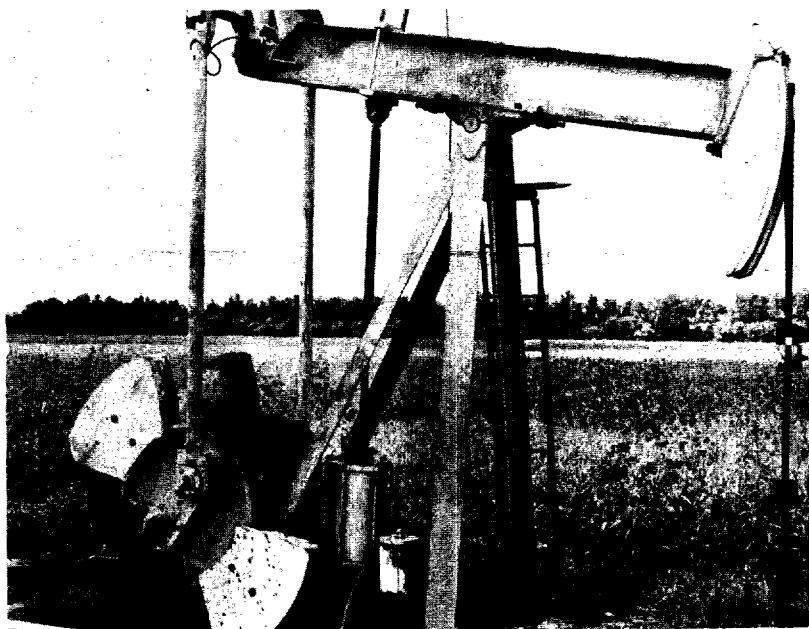
Auxiliary Unit Attached Directly To Well !!

★ **TOMMY'S VACUUM PUMP**, an auxiliary unit, is increasing production on many wells in both new and stripper fields.

★ The **TOMMY'S VACUUM PUMP**, is a double acting pump, giving constant uniform vacuum, pulling up to 26 points. The exhausts are tied together so that the gas may be re-claimed for regular use.

★ **EASILY INSTALLED** on beam or jack type unit in just a few hours.

★ **PUMPS NOW IN USE** in Centralia, St. Elmo and Salem, Ill.; Creek County and Oklahoma City, Oklahoma; Russell, Kansas and Kimball, Nebraska.



★ **Furnished Complete With:**

Unbreakable Oil Cup
Two 6-ft. Special Vacuum Hose
Beam Clamp With Bolts
Adapter for Piston Rod Extension

**Call or Write Today
For More Details**

EXCLUSIVE SALES RIGHTS

S. & H. MFG. CO.

PHONE HU 3-4252

RUSSELL, KANSAS

PHONE HU 3-2755