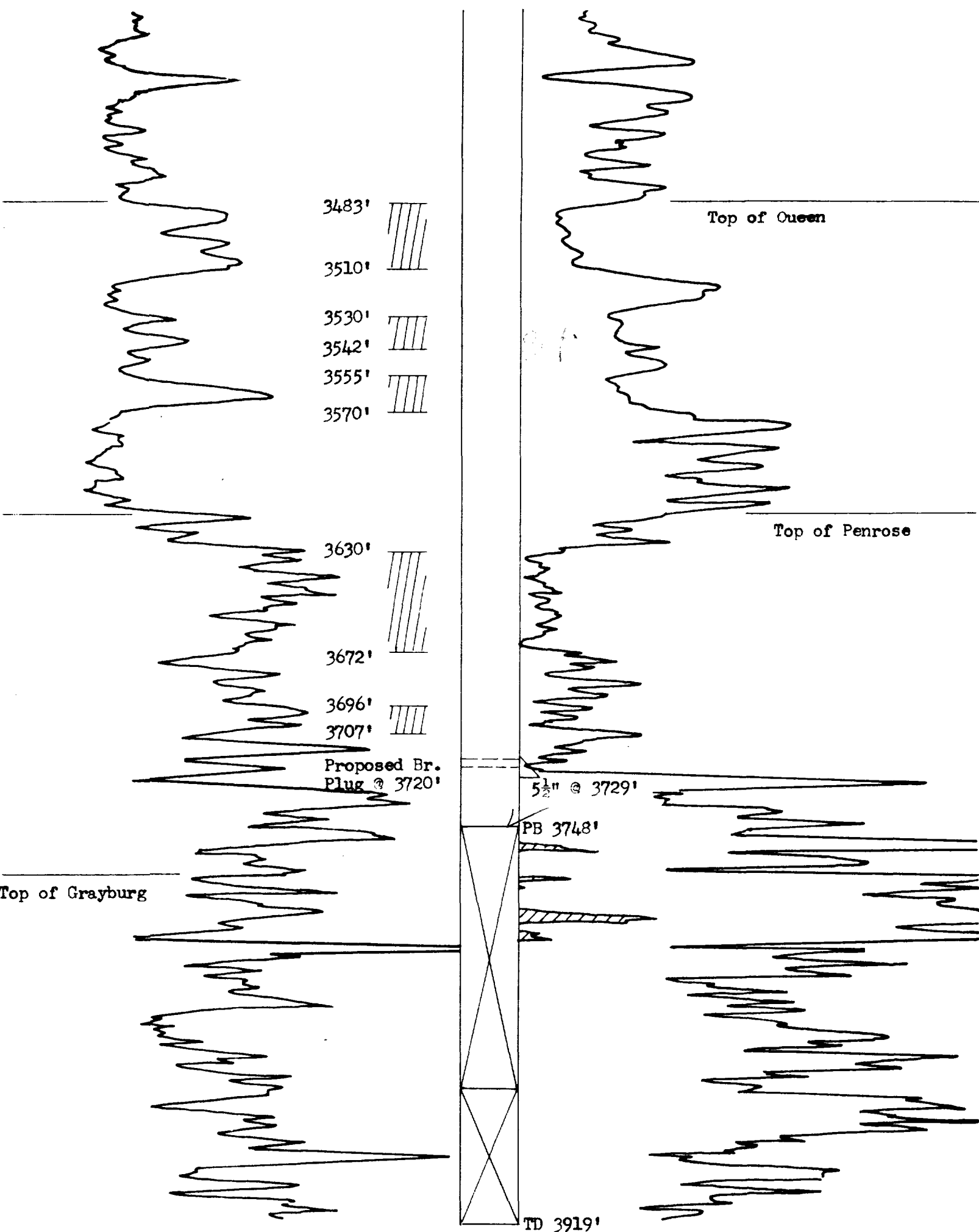


# CONTINENTAL OIL COMPANY

## SEMU-Permian No. 41

Elev: 3556'

BEFORE THE  
OIL CONSERVATION COMMISSION  
SANTA FE, NEW MEXICO  
*Cont.* EXHIBIT No. 2  
CASE 1406



Completed, 1-22-52, @ TD 3919' for 11 BOPD, no water, flowing thru 1" choke.

In March '54, in attempting to squeeze off gas, tools were lost in hole. In Sept. '57, attempts to whipstock failed, well was plugged back to 3748' and shut in. Total oil prod. 1303 bbls.

Case No. 1406  
Exhibit No. 2