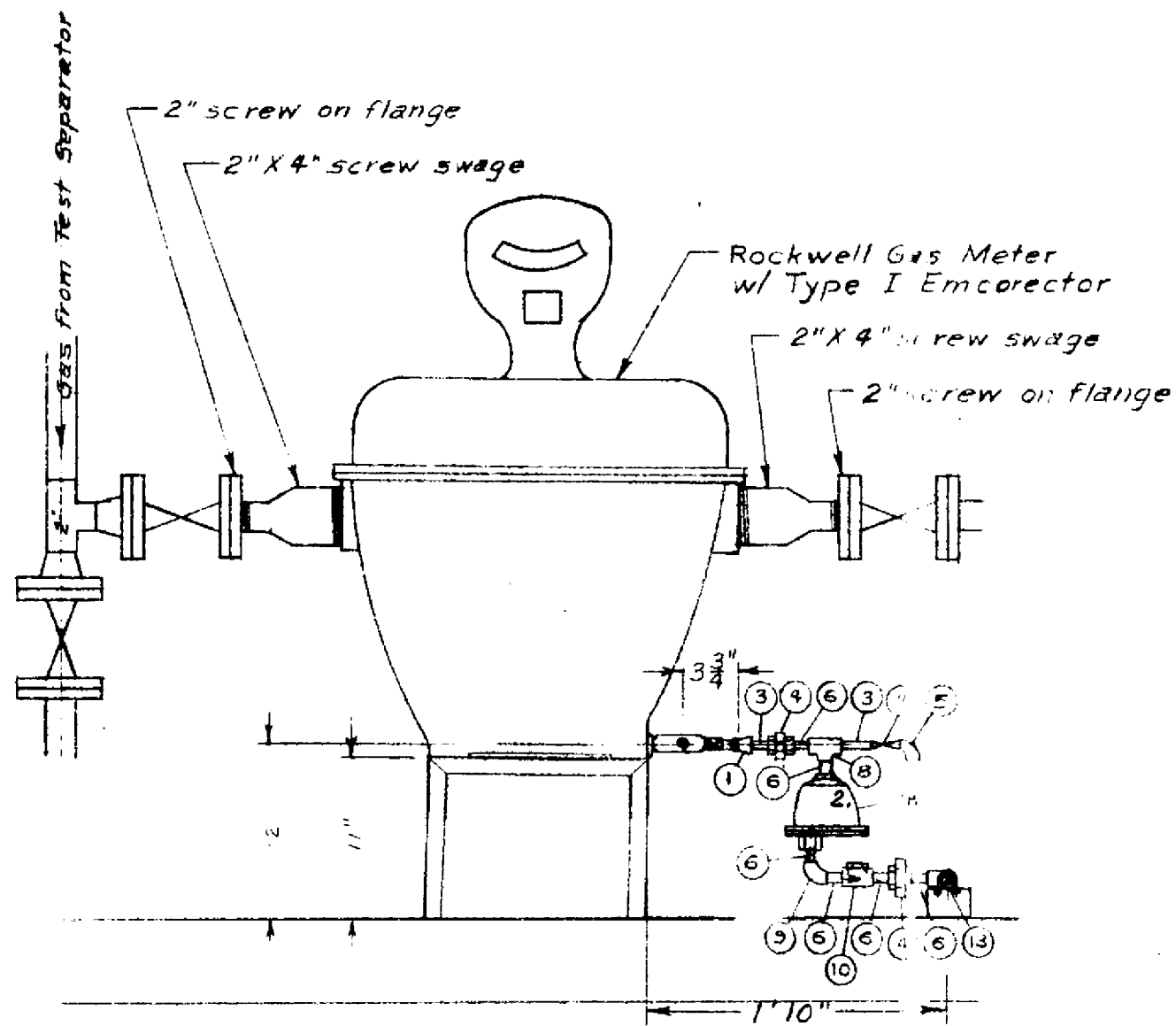
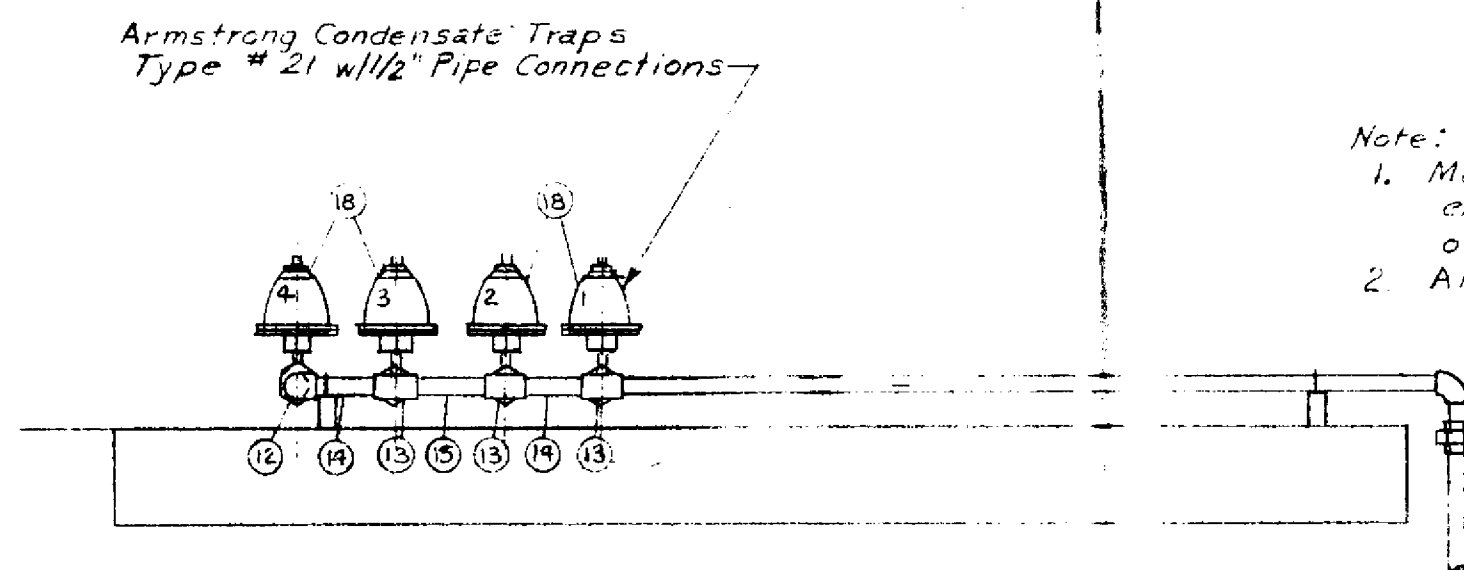


PART NO.	QUANT.	PART NAME
1	3	Reducer 1/2" X 1/4"
2	1	Nipple 1/4" X 1 1/2" lg.
3	5	Nipple 1/2" X 3" lg.
4	8	Screwed Union 1/2"
5	6	Street Elbow 1/2"
6	25	Nipple 1/2" X 2" lg.
7	4	Brass Gate Valve 1/2"
8	4	Standard Screwed Tee 1/2"
9	5	Elbow (90°) 1/2"
10	4	Check Valve (brass) 1/2"
11	1	Reducing Elbow 1/4" X 1/2"
12	1	Reducing Elbow 1/2" X 1"
13	3	Reducing Tee 1" X 1" X 1/2"
14	2	Nipple 1" X 4 1/2" lg.
15	1	Nipple 1" X 5 1/2" lg.
16	1	Close Nipple 1/4" 7/8" lg.
17	1	Nipple 1/2" 3 1/2" lg.
18	4	Armstrong Type # 21 Condensate Trap



SIDE VIEW
Note: Only the #2 Condensate Trap is shown



END VIEW

Note:
1. Make up dimensions were given on a normal engagement between Male & Female threads of 1/4" pipe 3/8", 1/2" pipe 1/2", 1" pipe 11/16".
2. All pipe & fittings 125# std.

BEFORE THE
OIL CONSERVATION COMMISSION
SANTA FE, NEW MEXICO
Shell EXHIBIT No. 6
CASE 1418

SHELL OIL COMPANY	
DETAIL OF CONDENSATE TRAPS FOR ROCKWELL GAS METER MUDGE #4 LEASE TEST FACILITIES	
DATE MAR 27 '58	SCALE 1" = 1'
DRAWN BY L. G. S.	APPROVED
TRACED BY	Y-20-074
CHECKED BY	