

# COMPARISON OF WELL LOGS A-A

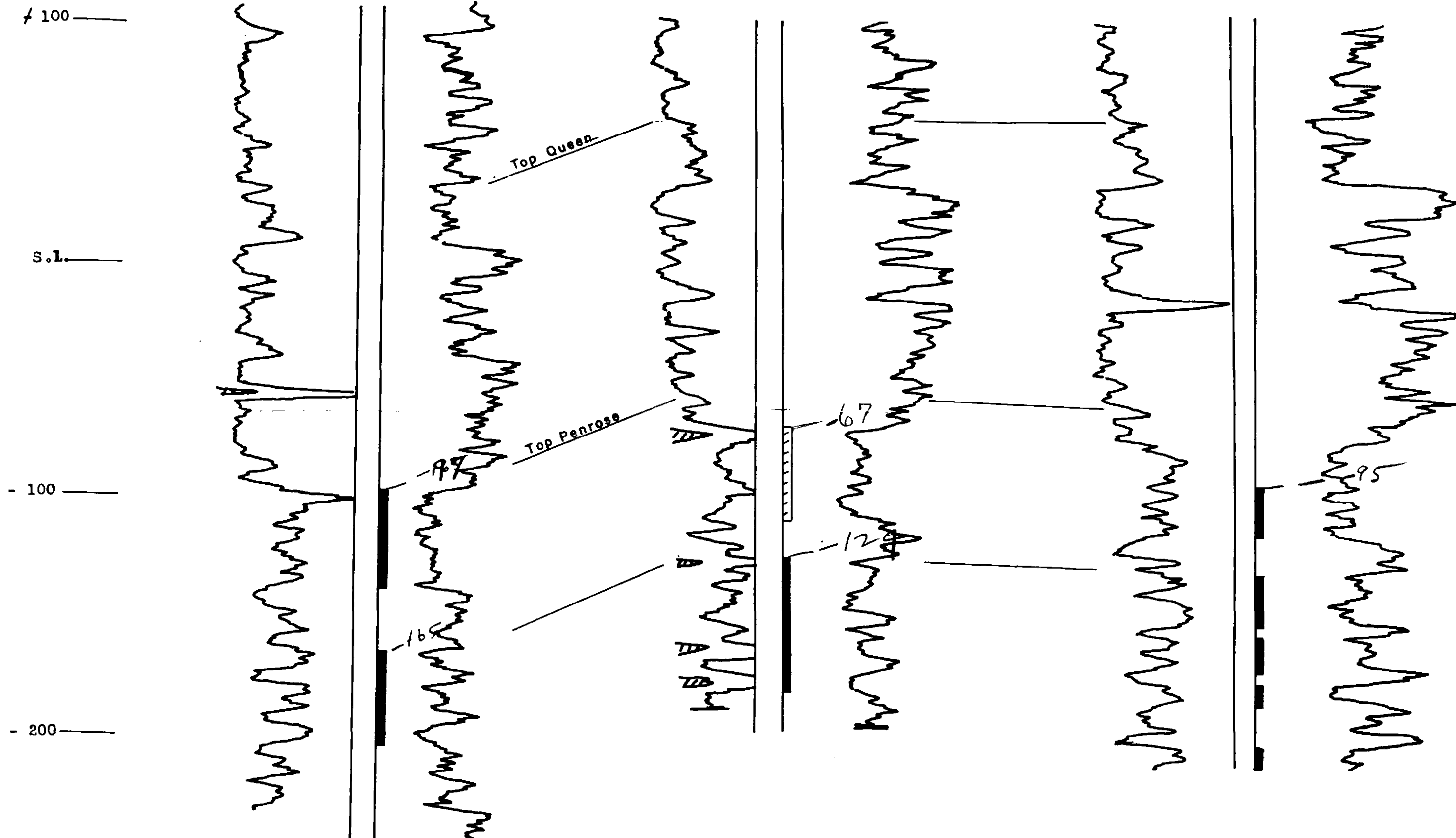
CONOCO  
STATE A-2 A NO. 1  
ELEV. 3605

TEXAS CO.  
WEIR B NO. 3  
ELEV. 3602

CONOCO  
SKAGGS B-12 NO. 2  
ELEV. 3595

3589

47,801



Completed 1-20-56  
for IP of 756 BOPD  
Based on 6-hour test  
of 189 BO. GOR 943

Completed 12-25-56  
for IP of 82 BOPD  
based on 14-hour test  
of 48 BO. GOR 17,628

Completed 9-25-56  
for IP of 294 BOPD  
based on 4-hour test  
of 49 BO. GOR 5,986

Case No. 1447  
Exhibit No. 2