

Case No.

468

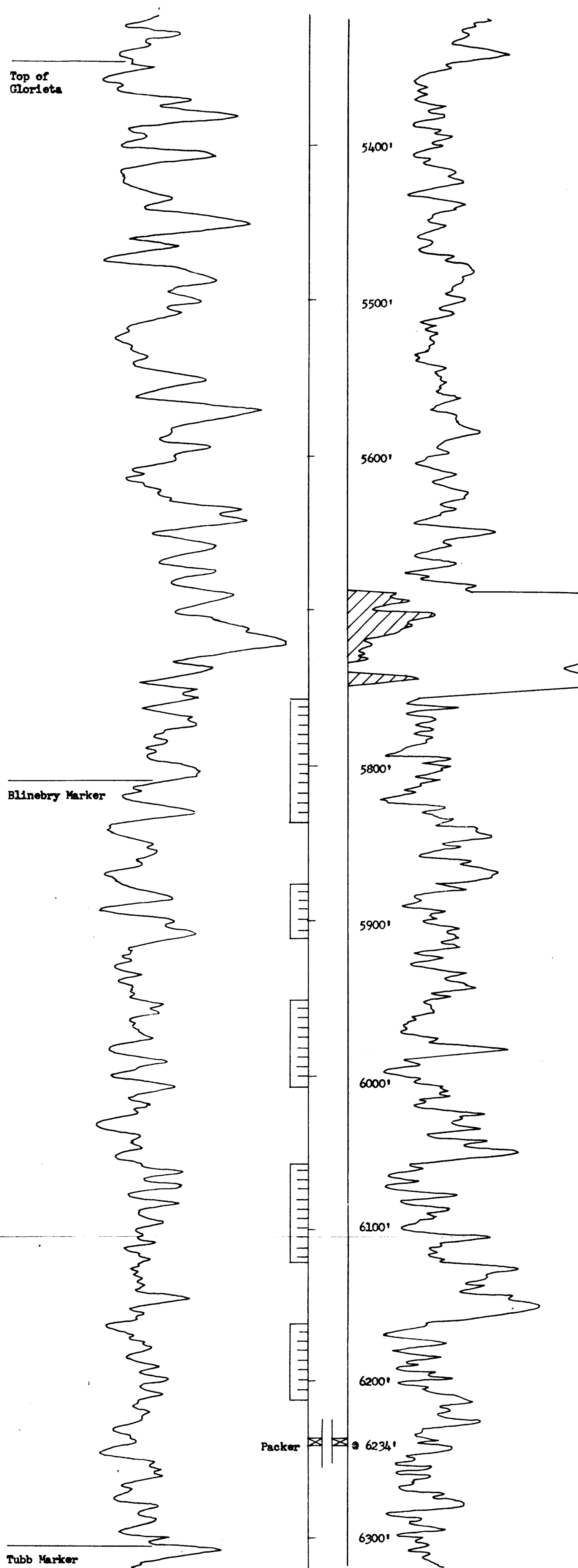
Large Exhibits

CONTINENTAL OIL COMPANY

WARREN UNIT BT NO.8

Log of Blinebry Section

Elev: 3550'



Dual Completion in Blinebry, 2-15-57, for IP of 7650 MCF gas, calculated open-flow, and 147 BDistPD thru open choke with GOR 31,816.