

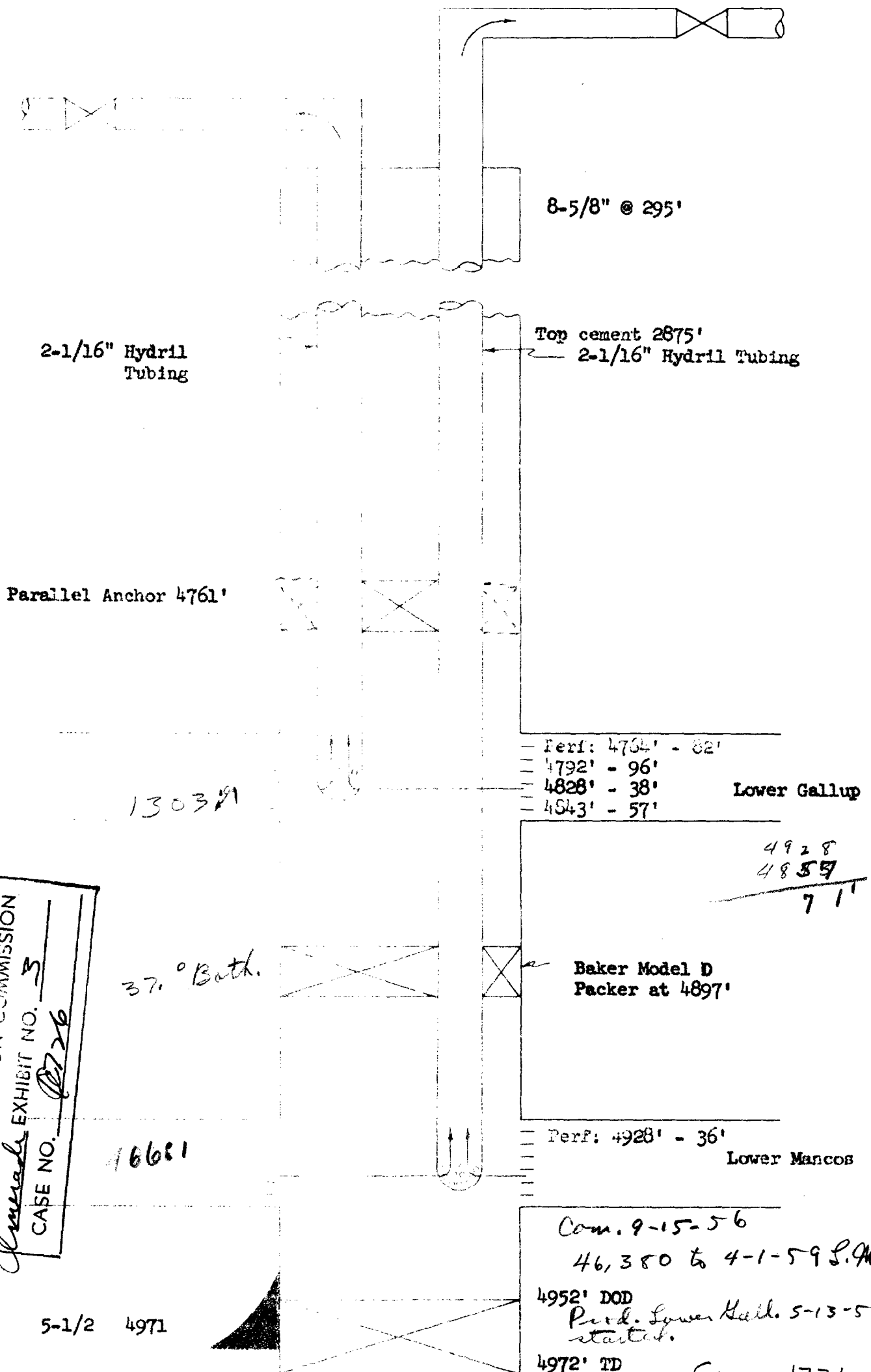
DIAGRAMMATIC SKETCH

DUAL COMPLETION INSTALLATION

COMPANY: AMERADA PETROLEUM CORPORATION

LEASE: KA - DA - PA NO. 1

BISTI FIELD, SAN JUAN COUNTY, NEW MEXICO



BEFORE EXAMINER UTZ
OIL CONSERVATION COMMISSION
EXHIBIT NO. 3
CASE NO. 1726

5-1/2 4971

Com. 9-15-56
46,380 to 4-1-59 S. Man.
4952' DOD
Perf. Lower Mancos 5-13-59
started.
4972' TD
Case 1726
Ex. 3

JASON W. KELLAHIN
ROBERT E. FOX

KELLAHIN AND FOX
ATTORNEYS AT LAW
54½ EAST SAN FRANCISCO STREET
POST OFFICE BOX 1713
SANTA FE, NEW MEXICO

MAIL OFFICE CC
TELEPHONES
Yucca 3-9396
Yucca 2-4366
1959 JUN 10 10 13 50

June 8, 1959

Case
1726

SW/4 SW/4

Mr. A. L. Porter, Secretary-Director
New Mexico Oil Conservation Commission
P. O. Box 871
Santa Fe, New Mexico

Dear Mr. Porter:

I am enclosing the application of Amerada Petroleum Corporation, in triplicate, for the dual completion of the Amerada Ka Da Pa No. 1 Well for production from the Bisti-Lower Gallup Oil Pool, and the Bisti-Lower Mancos sand formation, San Juan County, New Mexico.

It is requested that this application be set for hearing before the Commission at the regular statewide hearing, July 15, if at all possible. If this date cannot be arranged, would you please let me know as soon as possible.

Yours very truly,

Jason W. Kellahin
Jason W. Kellahin

JWK:j
Enclosure

cc: Mr. H. D. Bushnell
Amerada Petroleum Corporation

Jason says O.K. to
set for second
hearing
in July

Docket
mailed
7-18-59
JW

SCHLUMBERGER WELL SURVEYING CORPORATION

HOUSTON, TEXAS

Electrical Log



COUNTY: SAN JUAN
FIELD OR BISTI GALLUP
LOCATION: SEC. 4-25N-12W
WELL: KA-DA-PA #1
COMPANY: AMERADA PETR. CORP.

COMPANY: AMERADA PETROLEUM
CORPORATION

WELL: KA-DA-PA #1

FIELD: BISTI GALLUP

LOCATION: SEC. 4-25N-12W

COUNTY: SAN JUAN

STATE: NEW MEXICO

FILING No. DML 25,469

Location of Well

LS (ML)

660 FR S/L

660 FR W/L

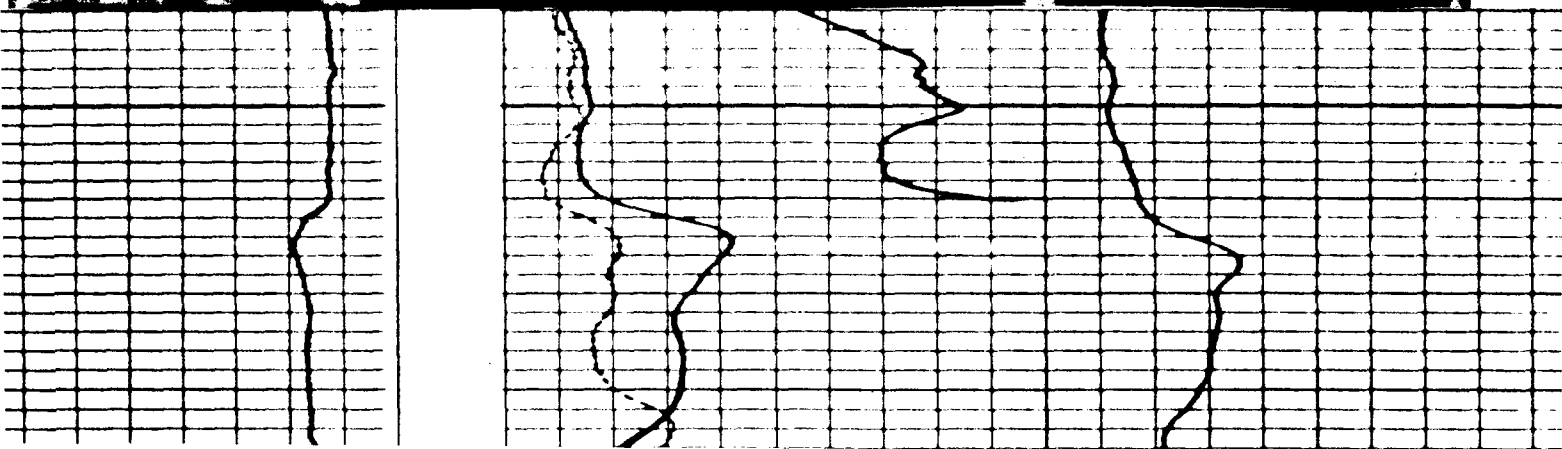
Case 1726

Ex. 2

Elevation: D.F.: 6168

K.B.: 6170

or G.L.: 6159



LARGE FORMAT
EXHIBIT HAS
BEEN REMOVED
AND IS LOCATED
IN THE NEXT FILE

LARGE FORMAT
EXHIBIT HAS
BEEN REMOVED
AND IS LOCATED
IN THE NEXT FILE