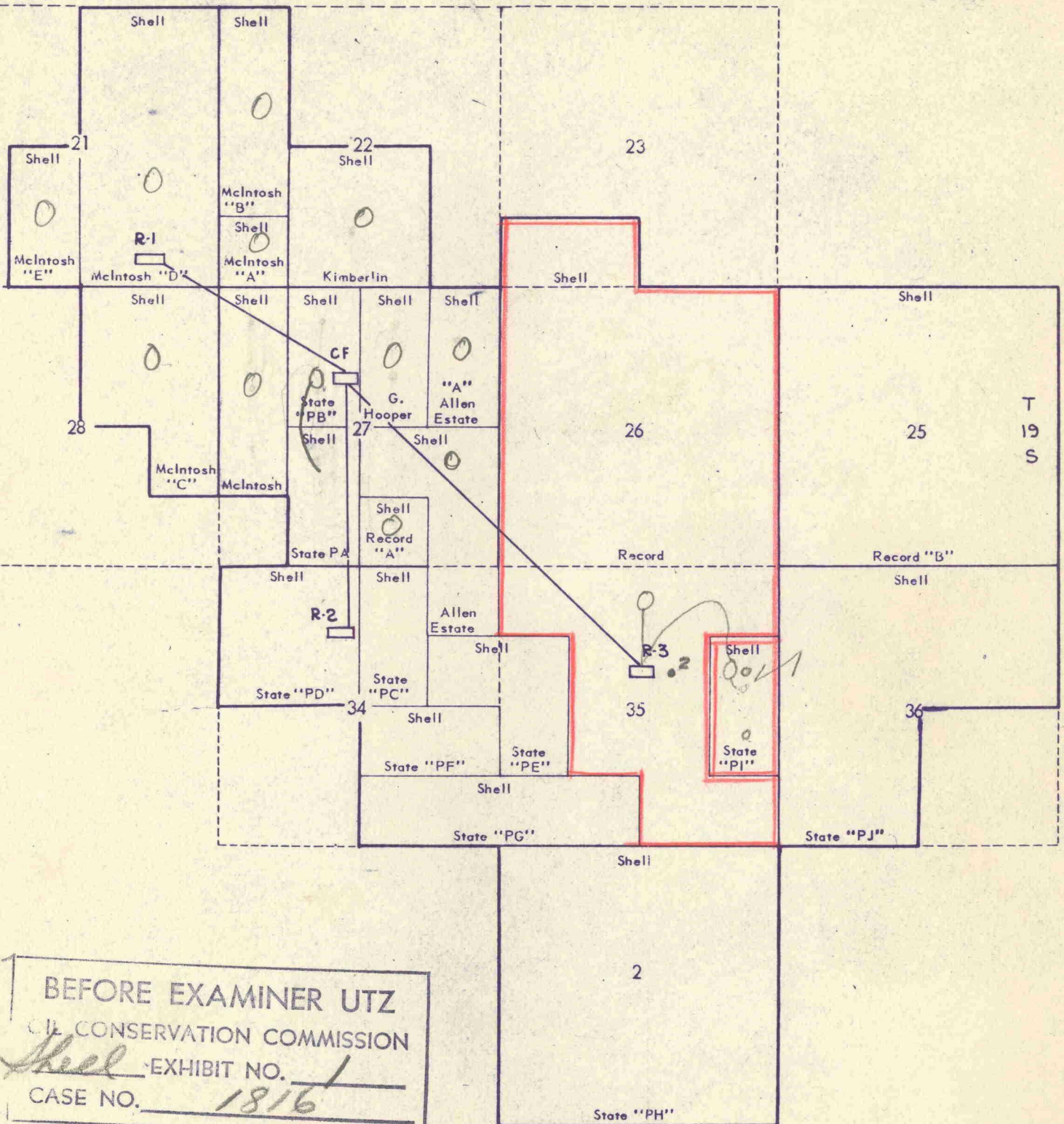


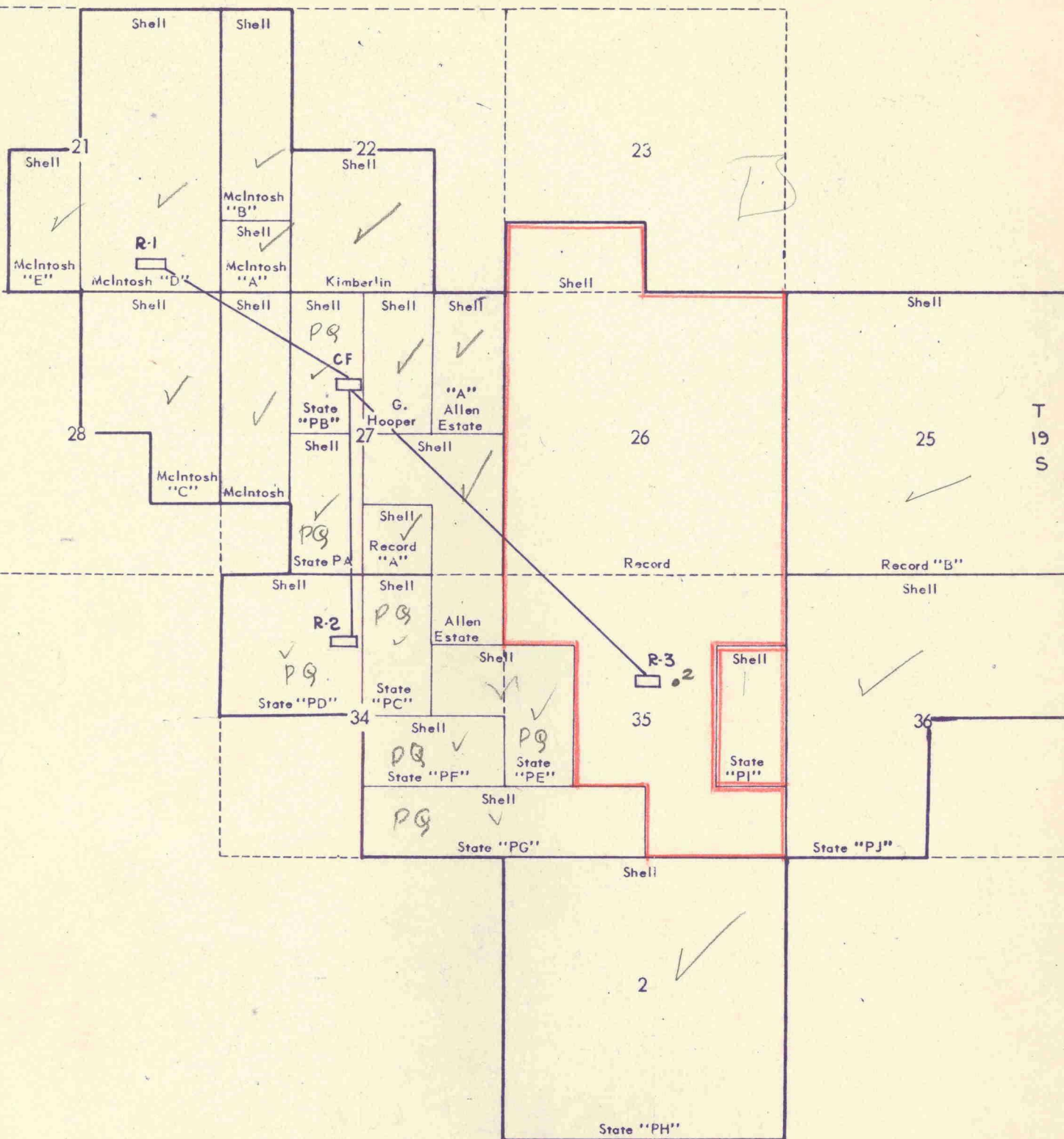
R 35 E



BEFORE EXAMINER UTZ
CL CONSERVATION COMMISSION
Shell EXHIBIT NO. 1
CASE NO. 1816

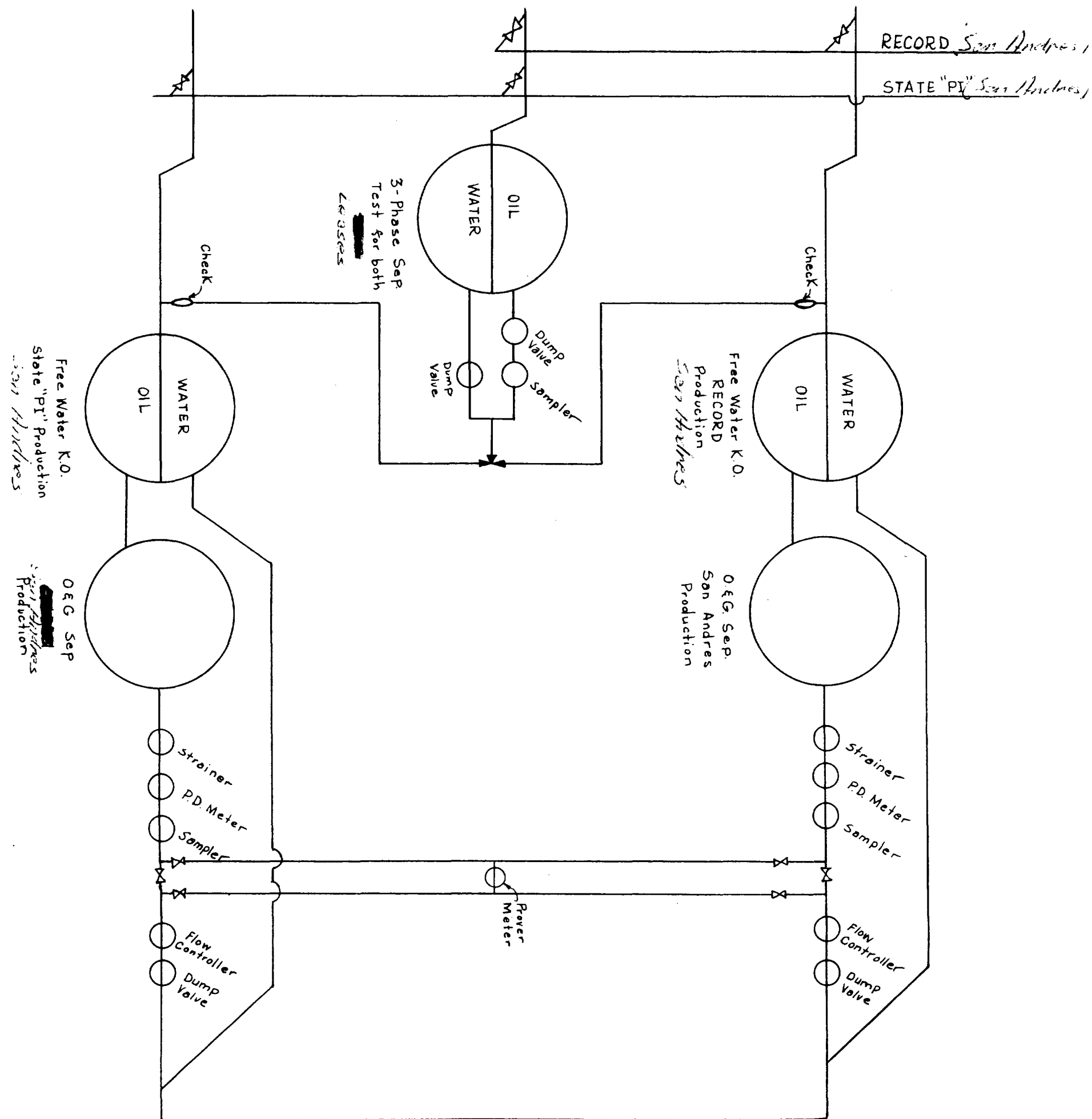
Pearl Queen Field
Lea Co., New Mexico

R 35 E



Ex # 1

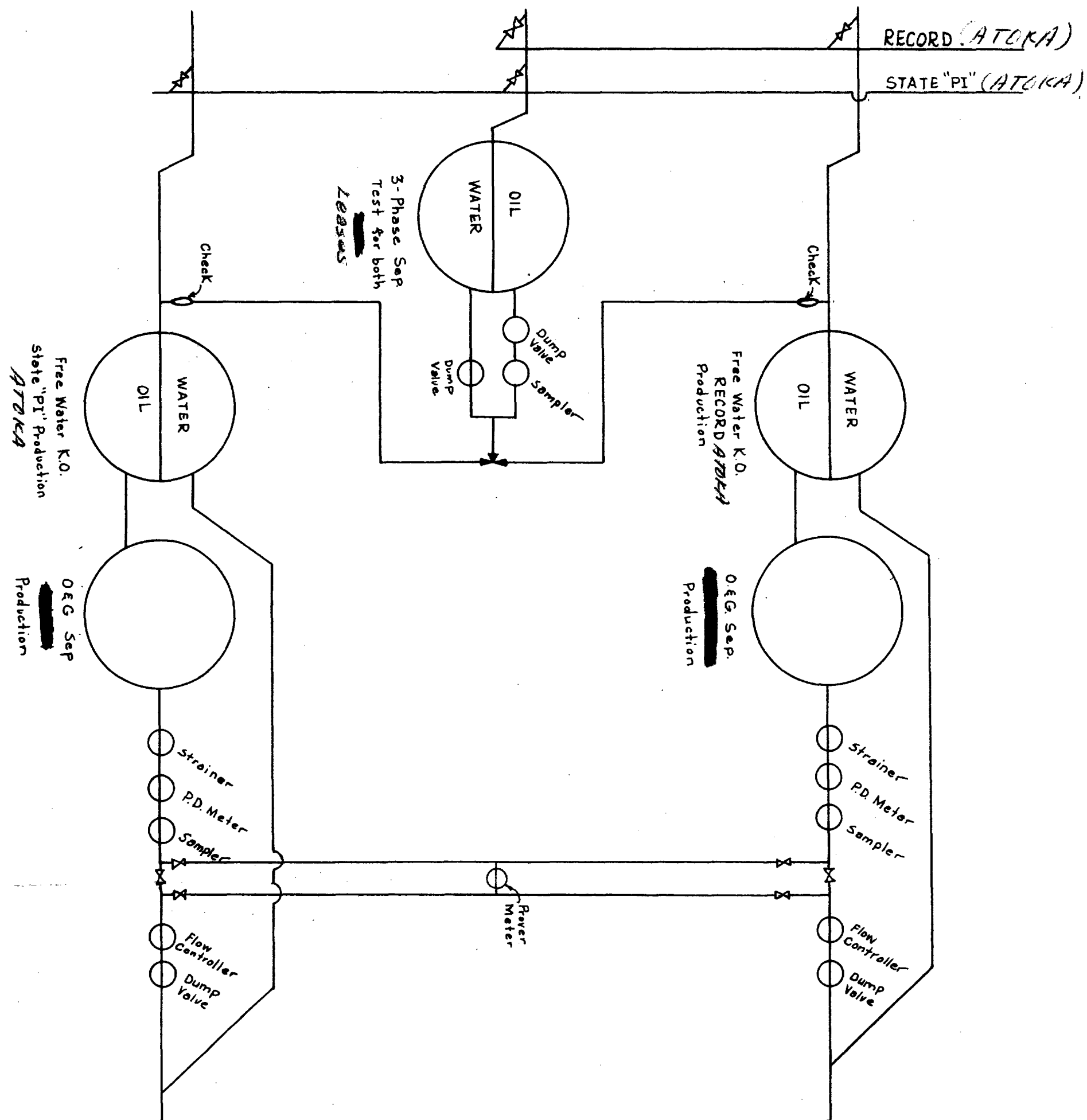
Pearl Queen Field
Lea Co., New Mexico



BEFORE EXAMINER UTZ
OIL CONSERVATION COMMISSION
EXHIBIT NO. 21
CASE NO. 1816

PRODUCTION FACILITIES
FOR EACH ZONE

SAN ANDRES



BEFORE EXAMINER UTZ
OIL CONSERVATION COMMISSION
EXHIBIT NO. 1876
CASE NO. 3

PRODUCTION FACILITIES
FOR EACH ZONE

ATOKA

4th

Records
PI

PO
SA
Atoka

Sup



Sec
Recess

P.O.

Sup. meeting

State
Recess

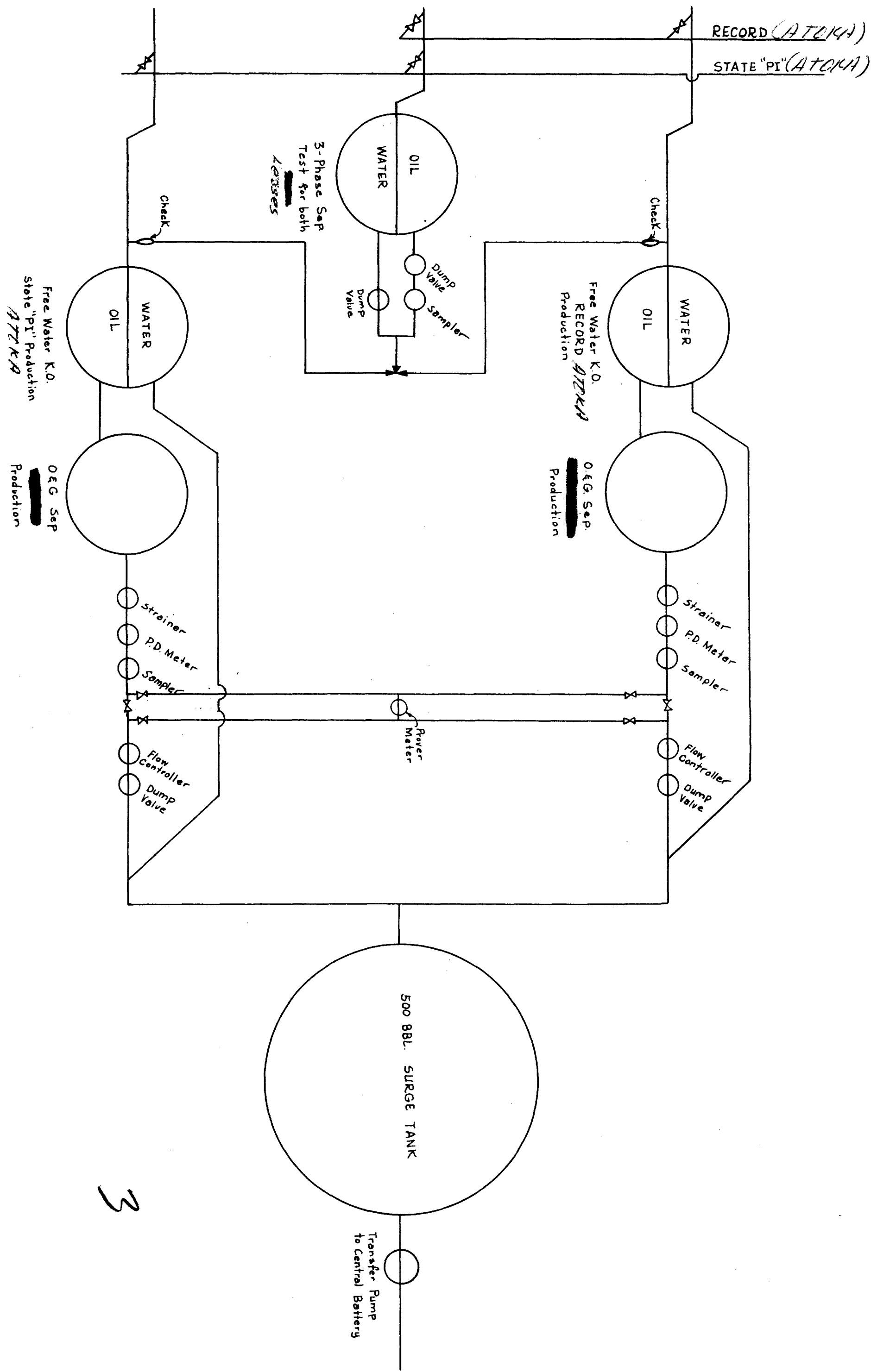
w/o meeting

4th
4th

IE

1.

(2) 4th (2) 3rd
(3) 4th =



3

PRODUCTION FACILITIES
FOR EACH ZONE

ATC/A

Case No.

1817

Large Exhibits

7181

LARGE FORMAT
EXHIBIT HAS
BEEN REMOVED
AND IS LOCATED
IN THE NEXT FILE

LARGE FORMAT
EXHIBIT HAS
BEEN REMOVED
AND IS LOCATED
IN THE NEXT FILE

LARGE FORMAT
EXHIBIT HAS
BEEN REMOVED
AND IS LOCATED
IN THE NEXT FILE

LARGE FORMAT
EXHIBIT HAS
BEEN REMOVED
AND IS LOCATED
IN THE NEXT FILE