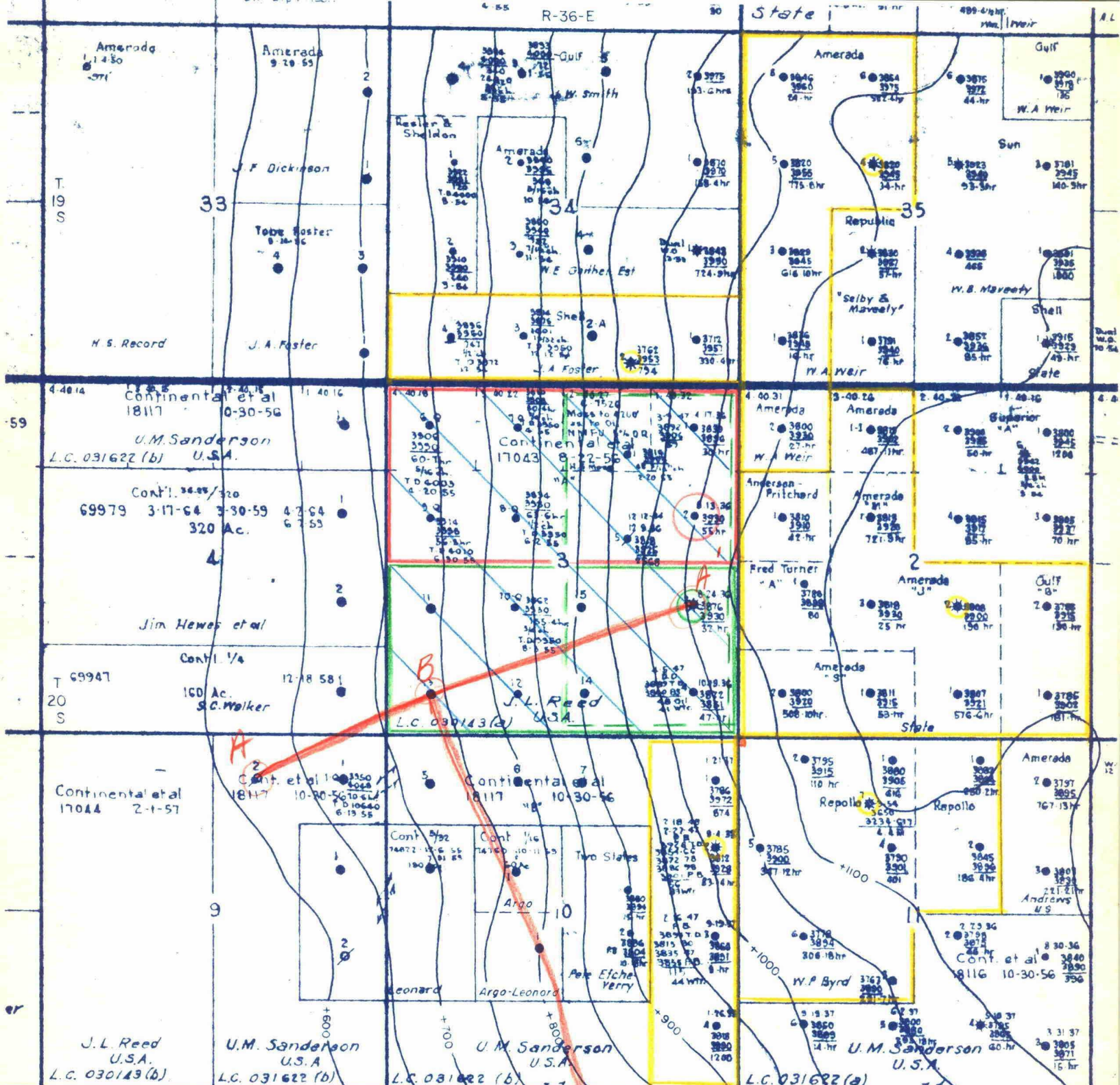


R-36-E

State

400-4-hr

A.L.



BEFORE EXAMINER NUTTER

OIL CONSERVATION COMMISSION

EXHIBIT NO. 1

CASE NO. 1835

Contour Int: 50'

STRUCTURE MAP - EUMONT AREA  
Contoured on Top of Yates

Scale: 1" = 2000'

5/23  
5/23

Gas Well No. 3  
Present Gas Unit No. 3  
Proposed Gas Unit No. 3

Proposed New Gas Well No. 2  
Proposed Gas Unit No. 2  
Offset Gas Well  
Offset Gas Unit

Continental Oil Co.

October, 1959.

LARGE FORMAT  
EXHIBIT HAS  
BEEN REMOVED  
AND IS LOCATED  
IN THE NEXT FILE