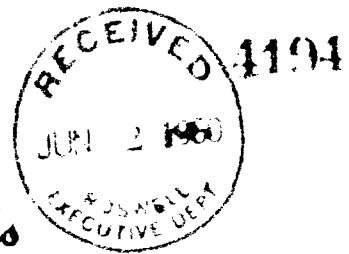


State of New Mexico



Commissioner of Public Lands



MURRAY E. MORGAN
COMMISSIONER



P.O. BOX 701
SANTA FE, NEW MEXICO

Appl *2000* *Y*

May 31, 1960

Gulf Oil Corporation
P. O. Drawer 669
Roswell, New Mexico

Re: Commingling of production from
Monument Pool from Leases A-1543-1,
B-230-1 and B-244-1.

Attention: W. A. Shellshear
District Manager

Gentlemen:

Permission is hereby granted to you to commingle production from the Monument Pool of wells located on the following Leases:

A-1543-1 containing the $W\frac{1}{2}SW\frac{1}{4}$
B-230-1 containing $S\frac{1}{2}SE\frac{1}{4}$, and
B-244-1 containing $W\frac{1}{2}NE\frac{1}{4}$

All in Section 13, Township 20 South, Range 36 East, Lea County, New Mexico.

All this acreage is committed to the same beneficiary, that being Common Schools.

Yours very truly,

MURRAY E. MORGAN
Commissioner of Public Lands
By:

Ted Bilberry
Supervisor Oil & Gas Division

cc: Oil Conservation Commission

MEM:TB-ML

Case No. 2000
Exhibit No. 4

ILLEGIBLE



POST OFFICE BOX

PETROLEUM AND ITS PRODUCTS

ROSWELL DISTRICT

GULF OIL CORPORATION

W. A. SHELLSHEAR
District Manager

P. O. DRAWER 669 • ROSWELL, NEW MEXICO

F. O. MORTLOCK
District Exploration Manager

June 27, 1960

FORT WORTH
PRODUCTION DIVISION

M. I. TAYLOR
District Production Manager

G. A. PRICE
District Services Manager

New Mexico Oil Conservation Commission
Post Office Box 871
Santa Fe, New Mexico

Attention: Mr. A. L. Porter, Jr.

Gentlemen:

In accordance with the conversation between Mr. Hoover of this office and Mr. Dan Nutter, Gulf Oil Corporation respectfully requests that the testimony given in Case No. 2,000 heard before the Examiner on June 22, 1960 be corrected as follows: The purchaser of the Monument oil production from the H. T. Orcutt "D", Graham-State "H" and R. R. Bell "G" Leases is Gulf Refining Company instead of Shell Pipeline Corporation.

Yours very truly,

W. A. Shellshear

JHH:hs



PETROLEUM AND ITS PRODUCTS

ROSWELL DISTRICT

W. A. SHELLSHEAR
District Manager

F. O. MORTLOCK
District Exploration Manager

M. I. TAYLOR
District Production Manager

G. A. PRICE
District Services Manager

GULF OIL CORPORATION

P. O. DRAWER 669 • ROSWELL, NEW MEXICO

Case 2000

May 18, 1960

Oil Conservation Commission
State of New Mexico
Post Office Box 871
Santa Fe, New Mexico

Re: Application for Approval of ACT System and Request for Exception to Rule 309 (a) for Gulf Oil Corporation's R. R. Bell (NCT-G), Graham State (NCT-H), and H. T. Orcutt (NCT-D) Leases, located in the Monument Pool, Lea County, New Mexico

Gentlemen:

Gulf Oil Corporation herewith makes application for exception to applicable rules and regulations of the New Mexico Oil Conservation Commission to obtain permission to install and operate automatic custody transfer equipment to handle production from the subject leases in the Monument Pool.

In order to fully utilize the proposed ACT system, Gulf Oil Corporation will request exceptions to:

- (1) NMOCC Rule 309 (a) which requires measurement of oil in tanks before such oil is transported from the lease.
- (2) Commingle production from each of the subject leases into a common battery to be located on the H. T. Orcutt (NCT-D) Lease.

In support of this application, Gulf Oil Corporation states the following:

- (A) Applicant is the owner and operator of the following leases located in Section 13, Township 20 South, Range 36 East, Lea County, New Mexico: R. R. Bell (NCT-G) consisting of the S/2 of the SE/4; Graham State (NCT-H) consisting of the W/2 of the SW/4; and H. T. Orcutt (NCT-D) consisting of the W/2 of the NE/4 of Section 13.
- (B) There is no diversity of royalty ownership underlying the above described leases.

May 18, 1960

- (C) Applicant proposes to replace present individual lease batteries with an automatic custody transfer system using dump-type or positive displacement meters and appropriate companion equipment as necessary to measure in barrels the amount of merchantable oil delivered to the pipe line. This ACT battery will be located on the H. T. Orcutt (NCT-D) Lease.
- X (D) Applicant proposes to allocate production to the individual leases on the basis of individual well tests.
- (E) The proposed installation will have adequate facilities to permit the taking of all required tests.
- (F) The granting of this application is in the interest of conservation and will protect correlative rights.
- (G) By copy of this letter, all offset operators and the pipe line concerned are notified of this application.

Respectfully submitted,

GULF OIL CORPORATION

BY: *W. A. Shellshear*
District Manager

JCG:dd

cc: Oil Conservation Commission
Post Office Box 2045
Hobbs, New Mexico

Amerada Petroleum Corporation
Post Office Box 2040
Tulsa, Oklahoma

Continental Oil Company
Post Office Box 427
Hobbs, New Mexico

El Paso Natural Gas Company
Post Office Box 1384
Jal, New Mexico

Pan American Petroleum Corporation
Post Office Box 268
Lubbock, Texas

Phillips Petroleum Company
Post Office Box 2105
Hobbs, New Mexico

Shell Oil Company
Post Office Box 1957
Hobbs, New Mexico

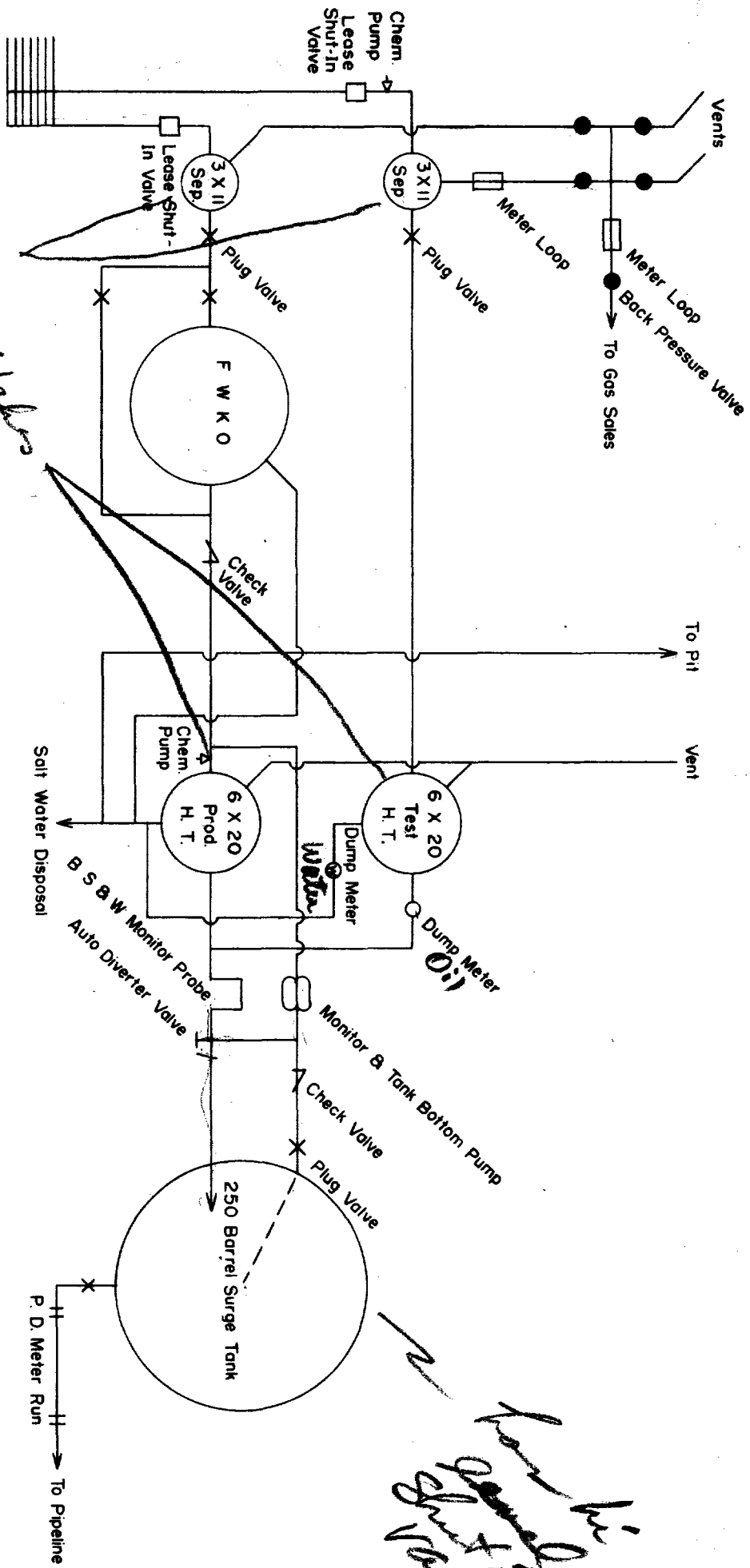
Sunray Mid-Continent Oil Company
1101 Wilco Building
Midland, Texas

Superior Oil Company
Post Office Box 510
Midland, Texas

Texaco, Inc.
Post Office Box 3109
Midland, Texas

Tidewater Associated Oil Company
Post Office Box 1404
Houston, Texas

Gulf Refining Company
Post Office Box 4232
Odessa, Texas



BEFORE EXAMINER NUTTER
OIL CONSERVATION COMMISSION
EXHIBIT NO. 2
CASE NO. 2000

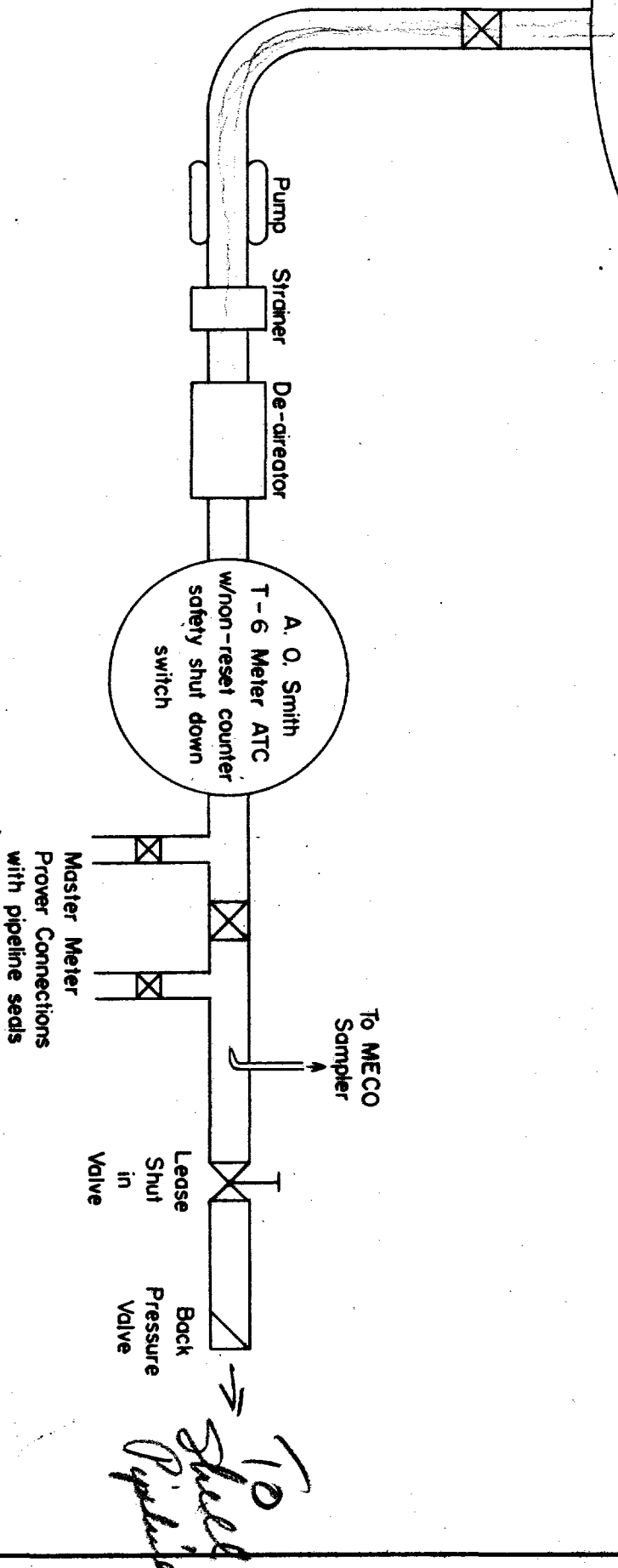
Case No 2000
Exhibit No 2

PRODUCTION AND TEST FLOW DIAGRAM
H. T. ORCUTT (NCT-D) LEASE

Gulf Oil Corporation

June 22, 1960

250 Barrel Surge Tank



BEFORE EXAMINER NUTTER
OIL CONSERVATION COMMISSION
EXHIBIT NO. 3
CASE NO. 2000

PROPOSED AUTOMATIC CUSTODY
TRANSFER SYSTEM

Gulf Oil Corporation

June 22, 1960

Case No. 2000
Exhibit No. 3