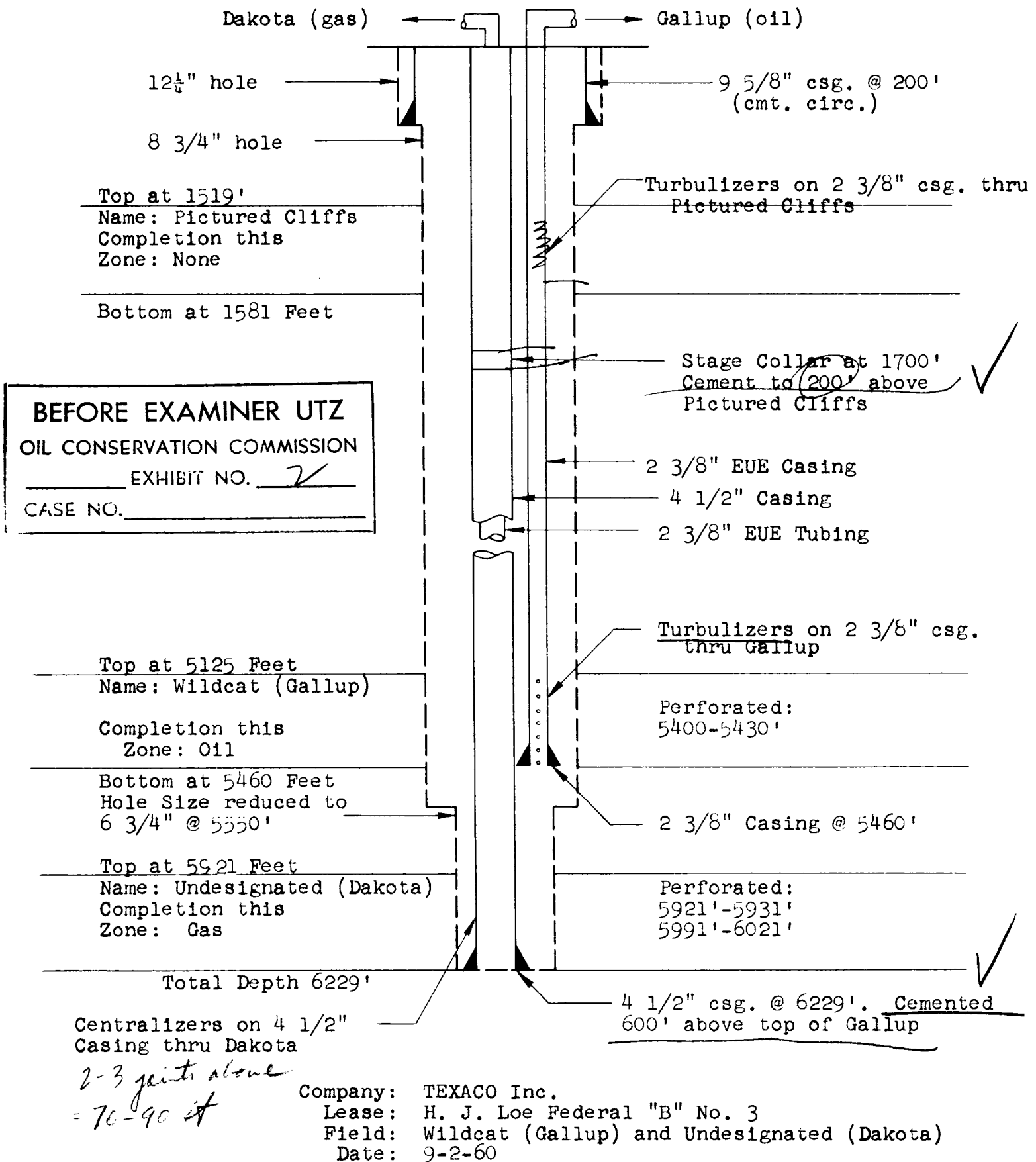
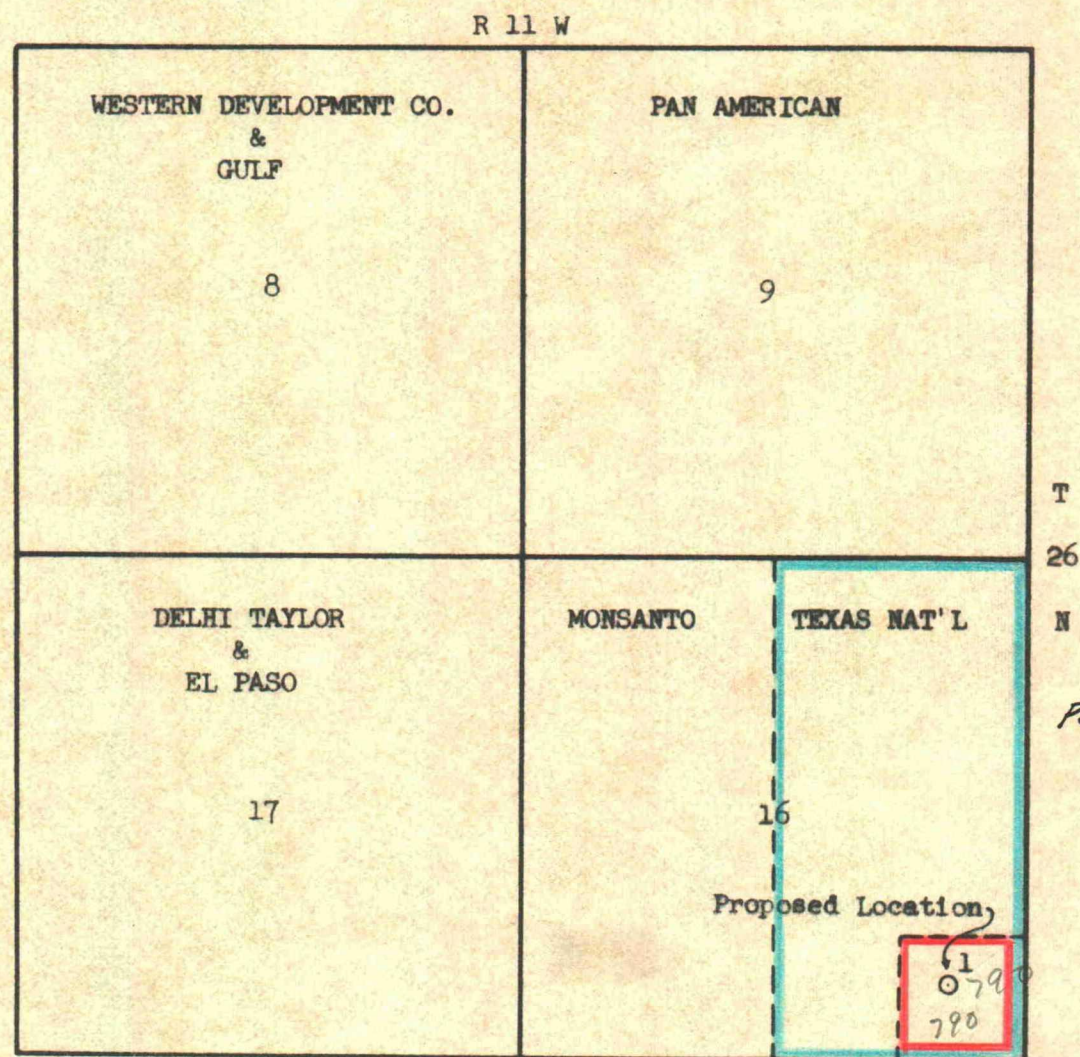


DIAGRAMMATIC SKETCH OF DUAL COMPLETION INSTALLATION





Tennessee Gas

SCALE: 1" - 2000'

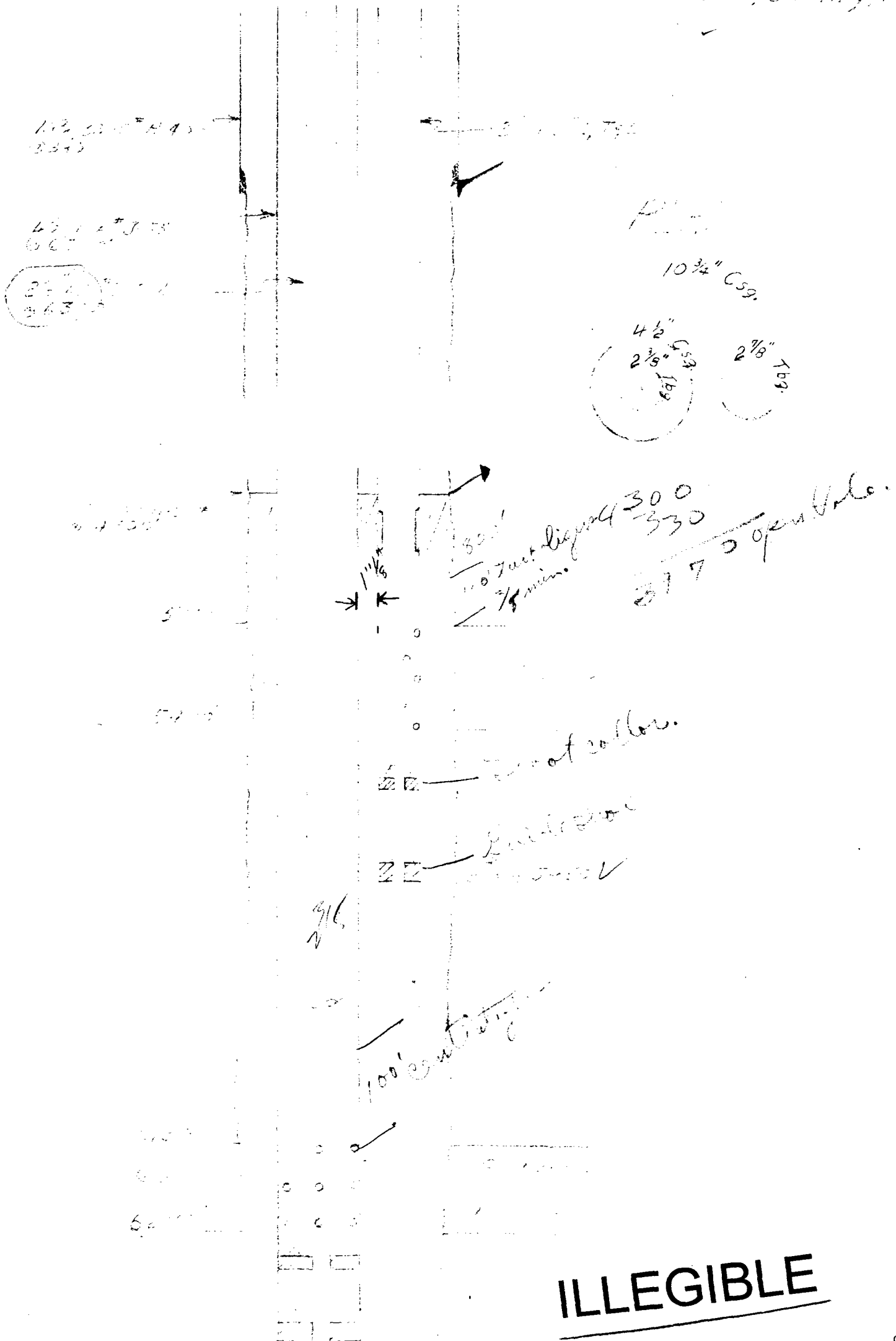
TEXAS NATIONAL PETROLEUM COMPANY
 #1 GOVERNMENT 16-26-11
 San Juan County, New Mexico

PROPOSED LOCATION

Dual Completion
 Gallup - Oil ■
 Dakota - Gas ■

6-1-1941

TEXAS NATIONAL FIELD
#1 Galt 15-33-11
San Juan, County, N.M.



ILLEGIBLE

INTERNATIONAL WELL DRILLING COMPANY
WILLING WELLS
DAKOTA-GALLUP WELL
Gallegos-Gallup Well
San Juan County, New Mexico

Case
2063

Location: 11 Government 16-26-1 location 790' from the North line and 790' from the East line, Section 16, T 26N, R 11E, San Juan County, New Mexico

1. HOLE

- a. Drill a 15" hole to 330' and set 330' of 10-3/4", 32.75#, 8-40, SWS, casing.
- b. Drill 9-7/8" hole to 6300'. Reduce hole to 7-7/8" and drill to 6300'. Set 6300' hole from surface on 110.
- c. Run Schlumberger EM, Gamma, and Gamma-Neutron logs.

2. DAKOTA Completion Only

- a. Run 4-1/2" 11.6#, 3-25, 10' casing to 6300' and centralize bottom 300'. Cement annulus to 300' above Dakota.
- b. Run Gamma Log and collar locator, perforate, test, run 2-3/8", 4.7#, 3-58, 10', and complete.

3. DAKOTA-GALLUP Dual Completion

- a. Run 4-1/2" to 6300'.
- b. Run 2-7/8" 6.4#, 3-5, 10' casing parallel and outside of 4-1/2" casing to 6300' (60' below bottom Dakota).
- c. Cement through 4-1/2" to cement both strings to 6300' above the Gallup.
- d. Perforate and fracture through 2-7/8" casing from casing 2-7/8" and 4-1/2" casing.
- e. Perforate and fracture through 4-1/2" casing.
- f. Run 2-7/8" casing and cement to 6300'.
- g. Seat 2-7/8" to clean up and run pump on rods (rod scraper attached).

ILLEGIBLE

NEW MEXICO OIL CONSERVATION COMMISSION
Santa Fe, New Mexico

Form C-101
Revised (12/1/55)

NOTICE OF INTENTION TO DRILL

Case 2063

Notice must be given to the District Office of the Oil Conservation Commission and approval obtained before drilling or recompletion begins. If changes in the proposed plan are considered advisable, a copy of this notice showing such changes will be returned to the sender. Submit this notice in QUINTUPLICATE. One copy will be returned following approval. See additional instructions in Rules and Regulations of the Commission. If State Land submit 6 Copies Attach Form C- 128 in triplicate to first 3 copies of form C-101

902 South Coast Bldg., Houston 2, Texas
(Place)

August 10, 1960
(Date)

OIL CONSERVATION COMMISSION
SANTA FE, NEW MEXICO

Gentlemen:

You are hereby notified that it is our intention to commence the Drilling of a well to be known as

Texas National Petroleum Co. #1 GOVERNMENT 16-26-11
(Company or Operator)

(Lease), Well No. 1, in 40 & 320 ac. The well is
(Unit)

located 790 feet from the East line and 790 feet from the South line of Section 16, T. 26 N., R. 11 W., NMPM.

(GIVE LOCATION FROM SECTION LINE) Wildcat Pool, San Juan County

If State Land the Oil and Gas Lease is No. NW 15-4 & 15-5

If patented land the owner is

Address

We propose to drill well with drilling equipment as follows: Rotary rig, mud in hole from surface to T.D. @ 6300'

The status of plugging bond is in force

Drilling Contractor Unknown

We intend to complete this well in the Gallup & Dakota as a dual well formation at an approximate depth of 5110' and 6130 feet.

CASING PROGRAM

We propose to use the following strings of Casing and to cement them as indicated:

Size of Hole	Size of Casing	Weight per Foot	New or Second Hand	Depth	Sacks Cement
13"	10-3/4	32.75	New	330'	Circ.to surface
9-7/8"	4-1/2	11.60	"	6300'	2100' fillup
9-7/8"	2-7/8	6.40	"	5450'	800' fillup

If changes in the above plans become advisable we will notify you immediately.

ADDITIONAL INFORMATION (If recompletion give full details of proposed plan of work.)

SEE ATTACHED

Approved, 19

Except as follows:

OIL CONSERVATION COMMISSION

By

Sincerely yours,

TEXAS NATIONAL PETROLEUM CO.

(Company or Operator)

Vice President

Position Send Communications regarding well to

Name Texas National Petroleum Co.

Address 902 So. Coast Bldg., Houston 2, Tex.

TEXAS NATIONAL PETROLEUM CO.
DRILLING PROGRAM
DAKOTA-GALLUP DUAL
Gallegos-Gallup Pool
San Juan County, New Mexico

Location: #1 Government 16-26-11 located 790' from the North line and 790' from the East line, Section 16, T 26N, R 11W, San Juan County, New Mexico

1. HOLE

- a. Drill a 13" hole to 350' and set 330' of 10-3/4", 32.75#, H-40, ST&C, casing.
- b. Drill 9-7/8" hole to 5700', reduce hole to 7-7/8" and drill to 6300' T.D. Mud in hole from surface to T.D.
- c. Run Schlumberger IES, Sonic, and Gamma-Neutron Logs.

2. DAKOTA completion only

- a. Run 4-1/2" 11.6#, J-55, ST&C casing to 6300' and centralize bottom 300'. Cement annulus to 800' above Dakota.
- b. Run Gamma Log and collar locator, perforate, frac, run 2-3/8", 4.7#, J-55, EUE and complete.

3. DAKOTA-GALLUP Dual Completion

- a. Run 4-1/2" to 6300'.
- b. Run 2-7/8" 6.4#, J-55, T&C (with collars bevelled) parallel and outside of 4-1/2" casing to 5300' (60' below bottom Gallup pay).
- c. Cement through 4-1/2" to cement both strings to 800' above the Gallup.
- d. Directionally perforate Gallup through 2-7/8" and frac holding 2000# on 4-1/2" casing.
- e. Perforate and frac Dakota through 4-1/2" casing.
- f. Run 2-3/8" tubing and swab in Dakota.
- g. Swab 2-7/8" to clean up and run pump and rods (Huber scraper attached).

NUMBER OF COPIES RECEIVED	
DISTRIBUTION	
SANTA FE	
FILE	
U.S.G.S.	
LAND OFFICE	
TRANSPORTER	OIL
	GAS
PRORATION OFFICE	
OPERATOR	

NEW MEXICO OIL CONSERVATION COMMISSION
WELL LOCATION AND ACREAGE DEDICATION PLAT
SEE INSTRUCTIONS FOR COMPLETING THIS FORM ON THE REVERSE SIDE

FORM C-128
Revised 5/1/57

SECTION A

Operator TEXAS NATIONAL PETROLEUM COMPANY		Lease NM 15-4 & 15-5		Well No. 1 Gov't. 16-26-11	
Unit Letter P	Section 16	Township 26 NORTH	Range 11 WEST	County SAN JUAN	
Actual Footage Location of Well: 790 feet from the SOUTH line and 790 feet from the EAST line					
Ground Level Elev. 6264.0	Producing Formation Gallup & Dakota		Pool Undesignated	Dedicated Acreage: 320 Acres	

- Ref. GLO plat dated 27 February 1932
1. Is the Operator the only owner in the dedicated acreage outlined on the plat below? YES ☐ NO ☒ ("Owner" means the person who has the right to drill into and to produce from any pool and to appropriate the production either for himself or for himself and another. (65-3-29 (e) NMSA 1935 Comp.)
 2. If the answer to question one is "no," have the interests of all the owners been consolidated by communitization agreement or otherwise? YES ☒ NO ☐ . If answer is "yes," Type of Consolidation communitization agreement
 3. If the answer to question two is "no," list all the owners and their respective interests below:

Owner	Land Description

SECTION B

		16	

790'

790'

0 330 660 990 1320 1650 1980 2310 2640 2000 1500 1000 500 0

CERTIFICATION

I hereby certify that the information in SECTION A above is true and complete to the best of my knowledge and belief.

Name <i>H. J. Withers</i>
Position Vice-President
Company Texas National Pet. Co.
Date August 18, 1960

I hereby certify that the well location shown on the plat in SECTION B was plotted from field notes of actual surveys made by me or under my supervision, and that the same is true and correct to the best of my knowledge and belief.

Date Surveyed 9 August 1960
Registered Professional Engineer and/or Land Surveyor <i>James P. Leeze</i>
Certificate No. 1463

INSTRUCTIONS FOR COMPLETION OF FORM C-128

1. Operator shall furnish and certify to the information called for in Section A.
2. Operator shall outline the dedicated acreage for *both* oil and gas wells on the plat in Section B.
3. A registered professional engineer or land surveyor registered in the State of New Mexico or approved by the Commission shall show on the plat the location of the well and certify this information in the space provided.
4. All distances shown on the plat must be from the outer boundaries of the Section.
5. If additional space is needed for listing owners and their respective interests as required in question 3 of Section A, please use space below.