

OWNERSHIP MAP - BRITT B-15 AREA

Scale: 1"=2000'

BEFORE EXAMINER UTZ  
OIL CONSERVATION COMMISSION  
App'l. EXHIBIT NO. 2311  
CASE NO. Ex 760

LEGEND

- Cass Well
- Eumont Well
- Monument Well
- Monument-Tubb Well
- Weir-Tubb Well
- Weir (Drinkard Well)

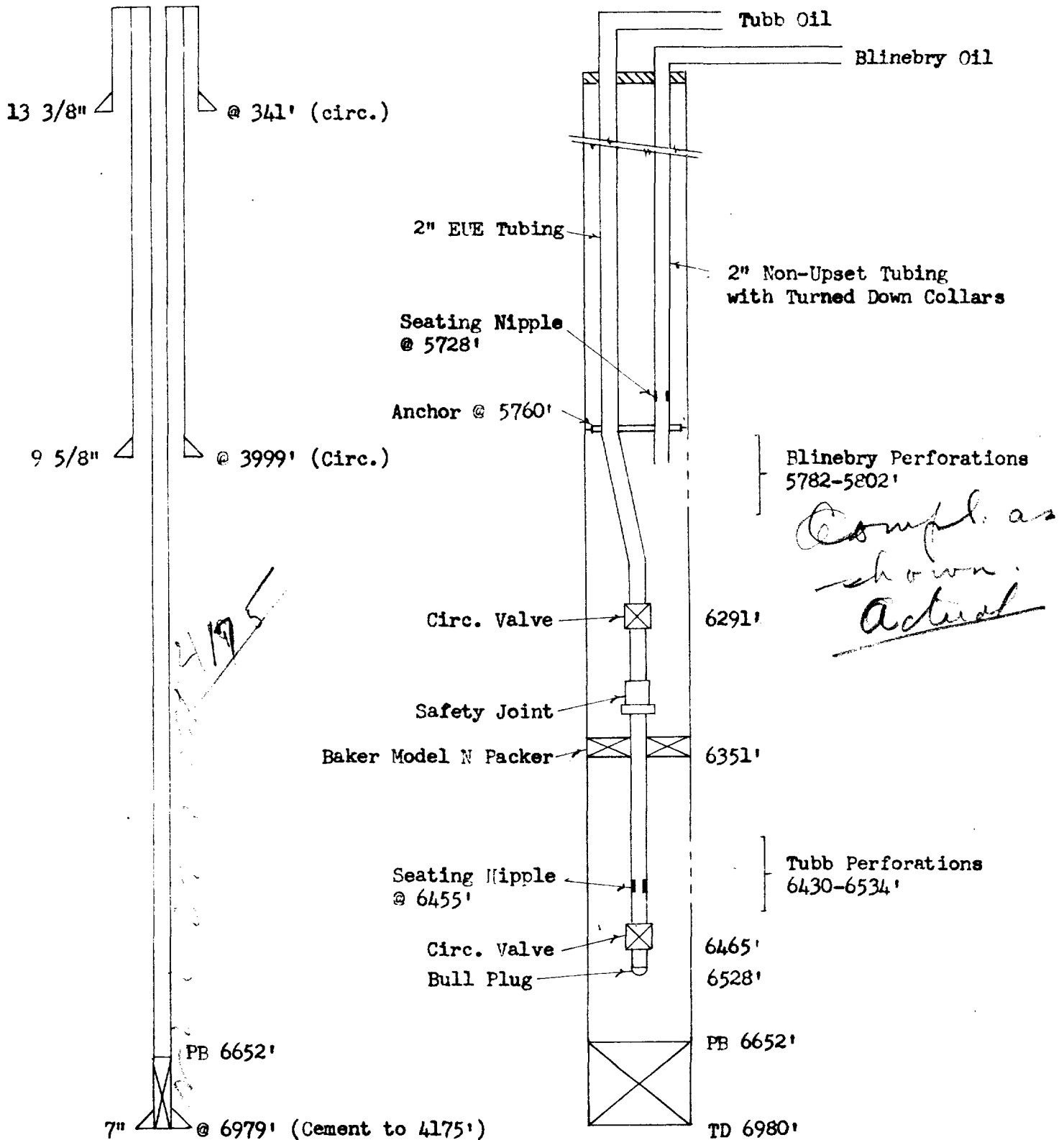
# CONTINENTAL OIL COMPANY BEFORE EXAMINER UTZ

*Britt B-15 No. 10*  
PROPOSED DUAL COMPLETION

OIL CONSERVATION COMMISSION  
*App.* EXHIBIT NO. 2  
CASE NO. 2311

## CASING RECORD

## DUAL COMPLETION EQUIPMENT



CONTINENTAL OIL COMPANY

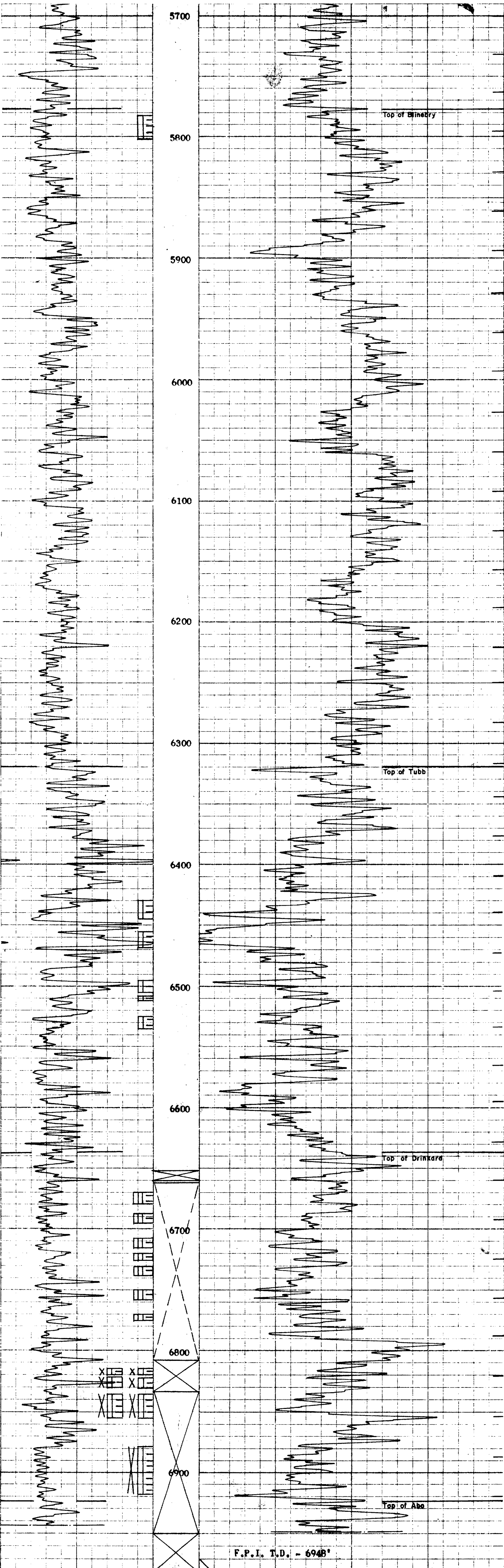
Britt B-15 No. 10

Elev. 3566

BEFORE EXAMINER UTZ

CONSERVATION COMMISSION

Case. EXHIBIT NO. 3  
CASE NO. 2311





NEW MEXICO OIL CONSERVATION COMMISSION  
SOUTHEAST NEW MEXICO PACKER LEAKAGE TEST

80-10000 (3) 1000  
RUM (4) WDH FILE  
Enc.

Operator Continental Oil Company			Lease Britt B-15			Well No. 10		
Location of Well		Unit F	Sec 15	Twp 20	Rge 37	County Lea		
	Name of Reservoir or Pool		Type of Prod (Oil or Gas)	Method of Prod Flow, Art Lift	Prod. Medium (Tbg or Csg)	Choke Size		
Upper Compl	Undesignated Blinbry		Oil	Flow	Tbg.	7/64		
Lower Compl	Monument Tubb		Oil	Flow	Tbg.	10/64		

FLOW TEST NO. 1

Both zones shut-in at (hour, date): 9:30 A.M. 6-9-61

Well opened at (hour, date): 9:30 A.M. 6-13-61

	Upper Completion	Lower Completion
Indicate by ( X ) the zone producing.....		X
Pressure at beginning of test.....	1319	1450
Stabilized? (Yes or No).....	No	No
Maximum pressure during test.....	1327	1450
Minimum pressure during test.....	1319	1348
Pressure at conclusion of test.....	1327	1348
Pressure change during test (Maximum minus Minimum).....	8	102
Was pressure change an increase or a decrease?.....	Inc.	Dec.
Well closed at (hour, date): 9:30 A.M. 6-14-61	Total Time On Production 24 Hours	
Oil Production During Test: 36 bbls; Grav. 41.0	Gas Production During Test: 78.3 MCF; GOR 2.175	

Remarks

FLOW TEST NO. 2

Well opened at (hour, date): 9:30 A.M. 6-15-61

	Upper Completion	Lower Completion
Indicate by ( X ) the zone producing.....	X	
Pressure at beginning of test.....	1342	1504
Stabilized? (Yes or No).....	No	No
Maximum pressure during test.....	1342	1504
Minimum pressure during test.....	499	1457
Pressure at conclusion of test.....	499	1457*
Pressure change during test (Maximum minus Minimum).....	843	47
Was pressure change an increase or a decrease?.....	Dec.	Dec.
Well closed at (hour, date): 9:30 A.M. 6-16-61	Total time on Production 24 Hours	
Oil Production During Test: 55 bbls; Grav. 38.8	Gas Production During Test: 7.94 MCF; GOR 441	

Remarks \*Fluid loading.

I hereby certify that the information herein contained is true and complete to the best of my knowledge.

Approved 19  
New Mexico Oil Conservation Commission

Operator Continental Oil Company

By Signed: V. G. McALISTER

By

Title District Superintendent

Title

Date 6-21-61