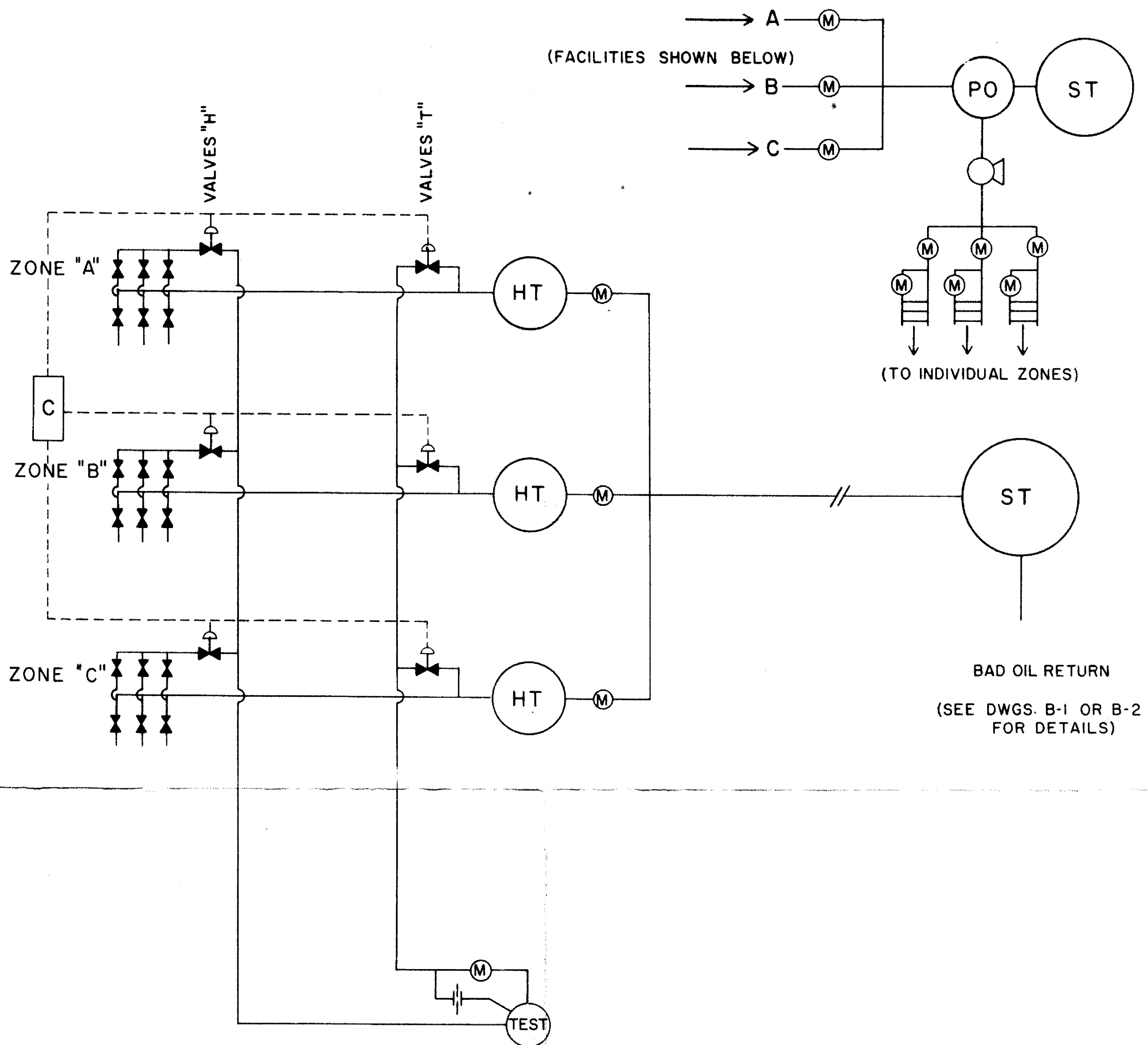


HYDRAULIC SUBSURFACE PUMPING INSTALLATION



SYMBOLS

	CHECK VALVE
	BLOCK VALVE
	2 WAY VALVE
	3 WAY VALVE (PNEUMATIC OR ELECTRICALLY CONTROLLED)
	CONTROL PANEL (PNEUMATIC OR ELECTRICAL)
	ORIFICE METER
	LIQUIDS METER
	TESTING VESSEL (HEAT-TREATER OR SEPARATOR)
	HEATER-TREATER
	POWER OIL TANK
	STOCK TANK
	PUMP
	SAMPLER
	SEPARATOR

1. Automatic well test header valves on individual well flowlines may be substituted for valve "H". Interlocking control as shown would then be required between each valve on the manifold and the respective valve "T".

INDIVIDUAL TREATERS USED IN COMINGLING ZONES
OF COMMON OR SEPARATE ROYALTIES
WHEN MANUAL VALVES ARE NOT INSTALLED

NEW MEXICO OIL CONSERVATION COMMISSION
COMMITTEE ON COMINGLING

DRAWN: H. M. S.

APPROVED:

REVISED

APPROVED

DATE: 5-4-61

DWG. NO.

A-3