

Chc 2447

 ${}_{28}^{78}\text{Ni}$

R 13 W

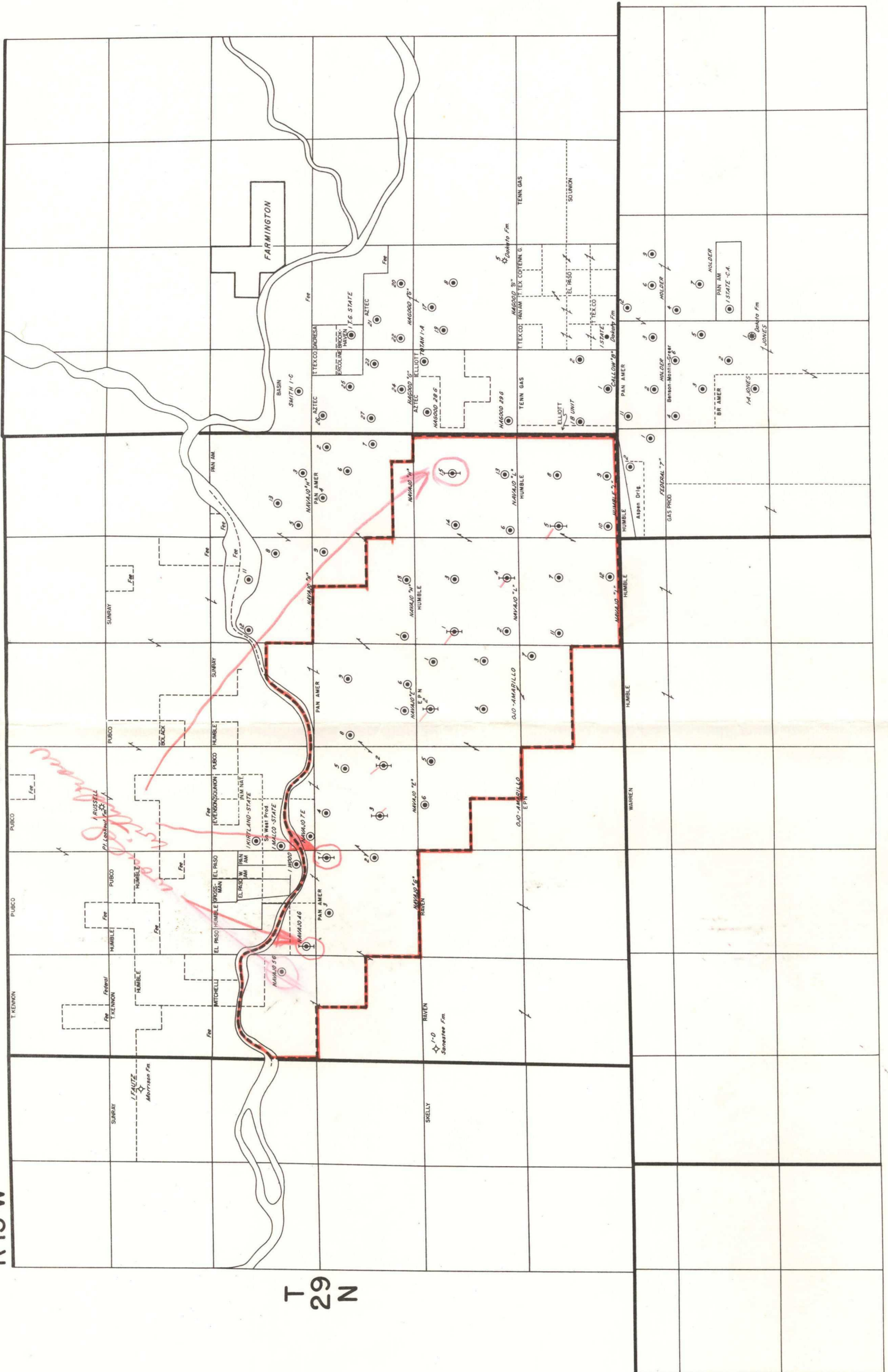
EXHIBIT A

R 14 W

R 15 W

T 29 N

T 28 N



HUMBLE OIL & REFINING COMPANY
DENVER AREA
CHA CHA GALLUP FIELD
San Juan County, New Mexico

LEGEND

- Existing Wells to be converted to Water Injection
- Unit Outline
- Gallup Formation Producer

N.W. CHA CHA GALLUP UNIT
PROPOSED WATER INJECTION SYSTEM

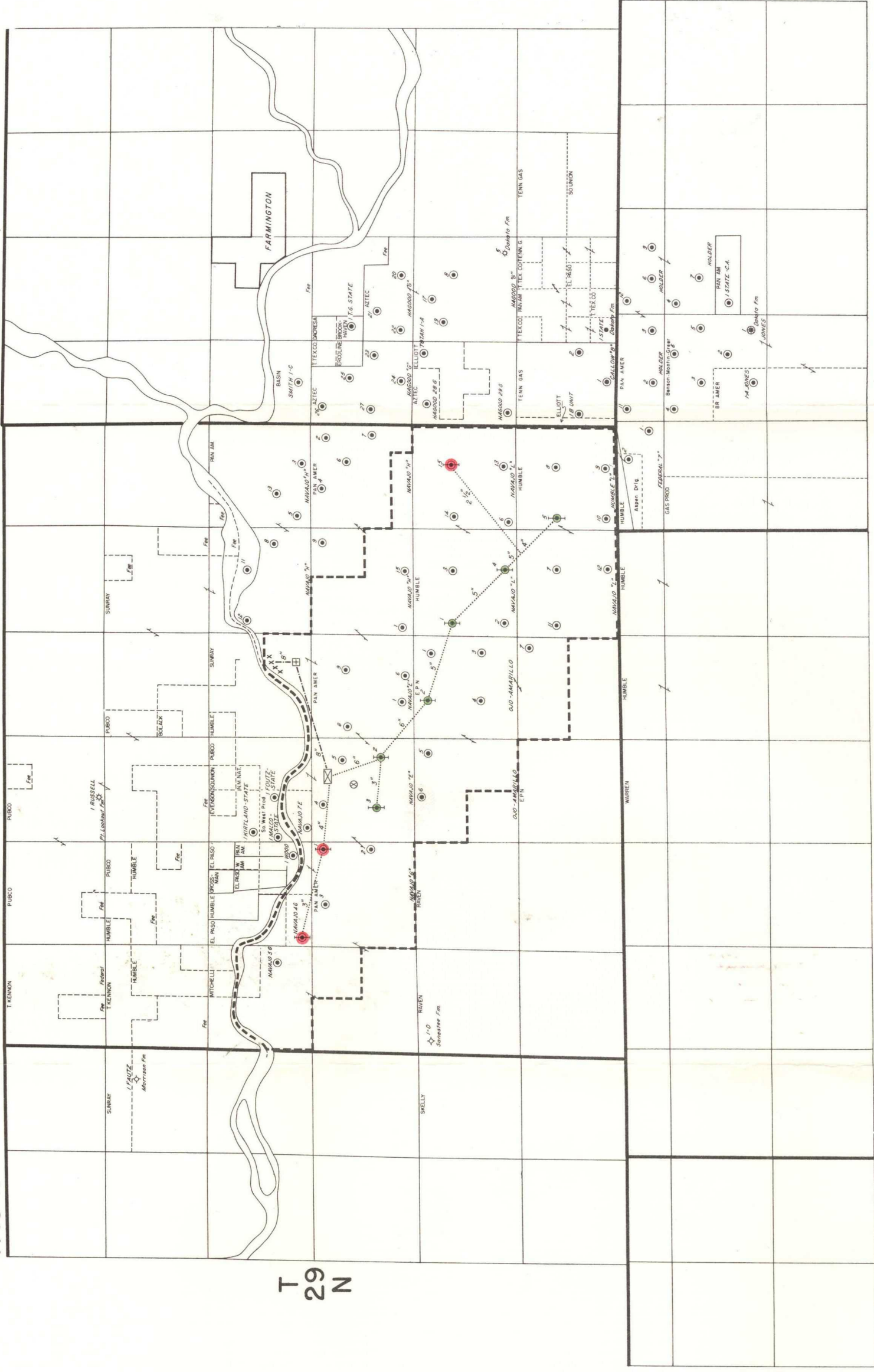
R 15 W

R 14 W

R 13 W

T 29 N

T 28 N



- LEGEND
- Existing Wells to be converted to Water Injection
 - Unit Outline
 - Gallup Formation Producer
 - Proposed Water Injection Plant
 - Proposed Booster Station
 - Proposed Water Source Wells
 - Proposed Water Injection Line Location and Size
 - Possible alternate Water Source Well — Jm Formation
 - Proposed Water Source Line Location and Size
 - Conversions to be delayed until satisfactory Lease Line agreements are effected

HUMBLE OIL & REFINING COMPANY
DENVER AREA
CHA CHA GALLUP FIELD
San Juan County, New Mexico

#1

LARGE FORMAT
EXHIBIT HAS
BEEN REMOVED
AND IS LOCATED
IN THE NEXT FILE

LARGE FORMAT
EXHIBIT HAS
BEEN REMOVED
AND IS LOCATED
IN THE NEXT FILE

LARGE FORMAT
EXHIBIT HAS
BEEN REMOVED
AND IS LOCATED
IN THE NEXT FILE

LARGE FORMAT
EXHIBIT HAS
BEEN REMOVED
AND IS LOCATED
IN THE NEXT FILE