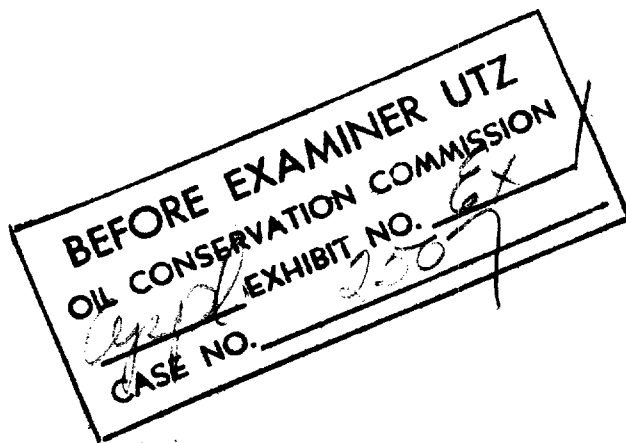


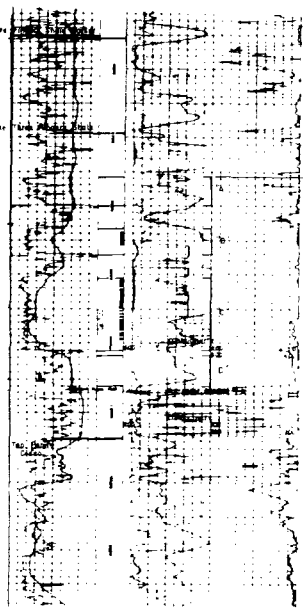
EXHIBIT  
FOR THE PEOPLE OF AMERICAN REPUBLIC OF  
UNITED STATES OF CALIFORNIA  
JULIO CESAR ROX 2507  
BONNET 2075 LOS ANGELES (1001) 120  
MAY 15, 1967

ILLEGIBLE



—TYPE LOG—

UNION OIL CO.  
STATE NO. 1-33"  
ELEV. 4327



NO ANDERSON RANCH UNIT

DENSE LIMESTONE

SINCLAIR

-5560-

NMOCC CASE NO. 2507

UNION OIL EXHIBIT NO. A

DATE March 28, 1962

UNION OIL COMPANY OF CALIFORNIA  
CENTRAL DIVISION - MEXICO

ANDERSON RANCH FIELD  
LEA COUNTY, NEW MEXICO

---STRUCTURE MAP---

CONTOURED ON — TOP "A" LIME  
CONTOUR INTERVAL — 20'  
DATE 3-23-62 BY — E. J. MATCHUS

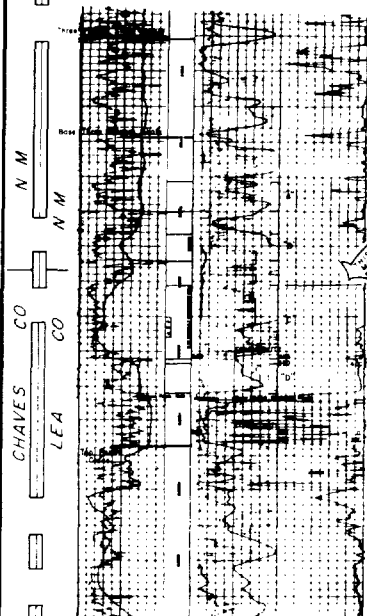
0 1000 2000 3000 4000 FEET

—LEGEND—



—TYPE LOG—

UNION OIL CO  
STATE NO 1-35  
ELEV 4327



NO. ANDERSON RANCH UNIT

DENSE LIMESTONE

R-32-E

R-33-E

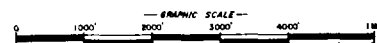
NMOCC CASE NO. 2597  
UNION OIL EXHIBIT NO. B  
DATE March 28, 1962

UNION OIL COMPANY OF CALIFORNIA  
CENTRAL DIVISION - MIDLAND DISTRICT

ANDERSON RANCH FIELD  
LEA COUNTY, NEW MEXICO

—STRUCTURE MAP—

CONTOURED ON — TOP "C" LIME  
CONTOUR INTERVAL — 20'  
DATE-5-23-62 BY—E.J. MATCHUS



—LEGEND—

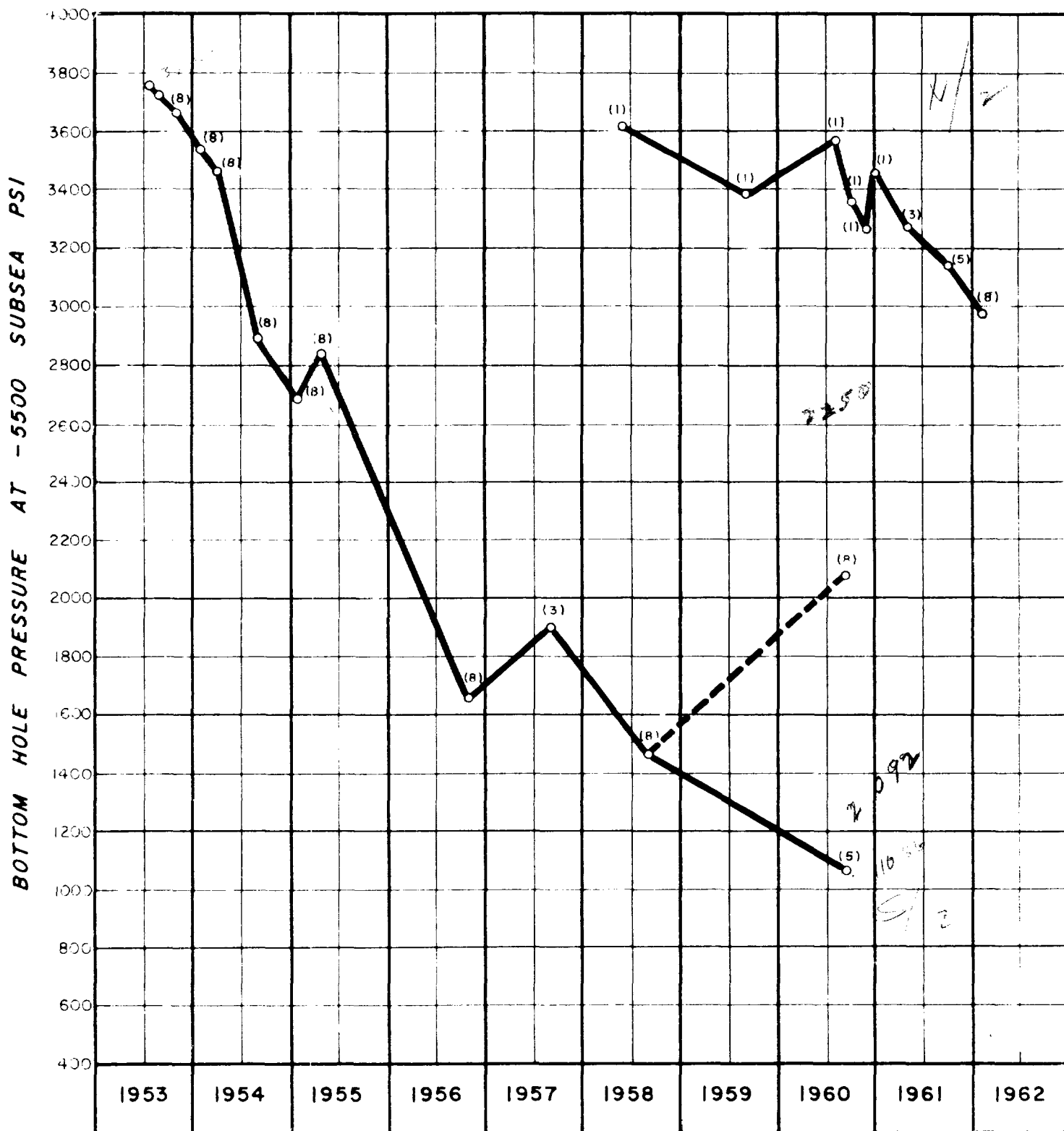
- 1" = 100' = Well Log
- 1" = 100' = Deviation
- 1" = 100' = Salt Water Disposal Well

Case File

2507

Map at 141

LARGE FORMAT  
EXHIBIT HAS  
BEEN REMOVED  
AND IS LOCATED  
IN THE NEXT FILE

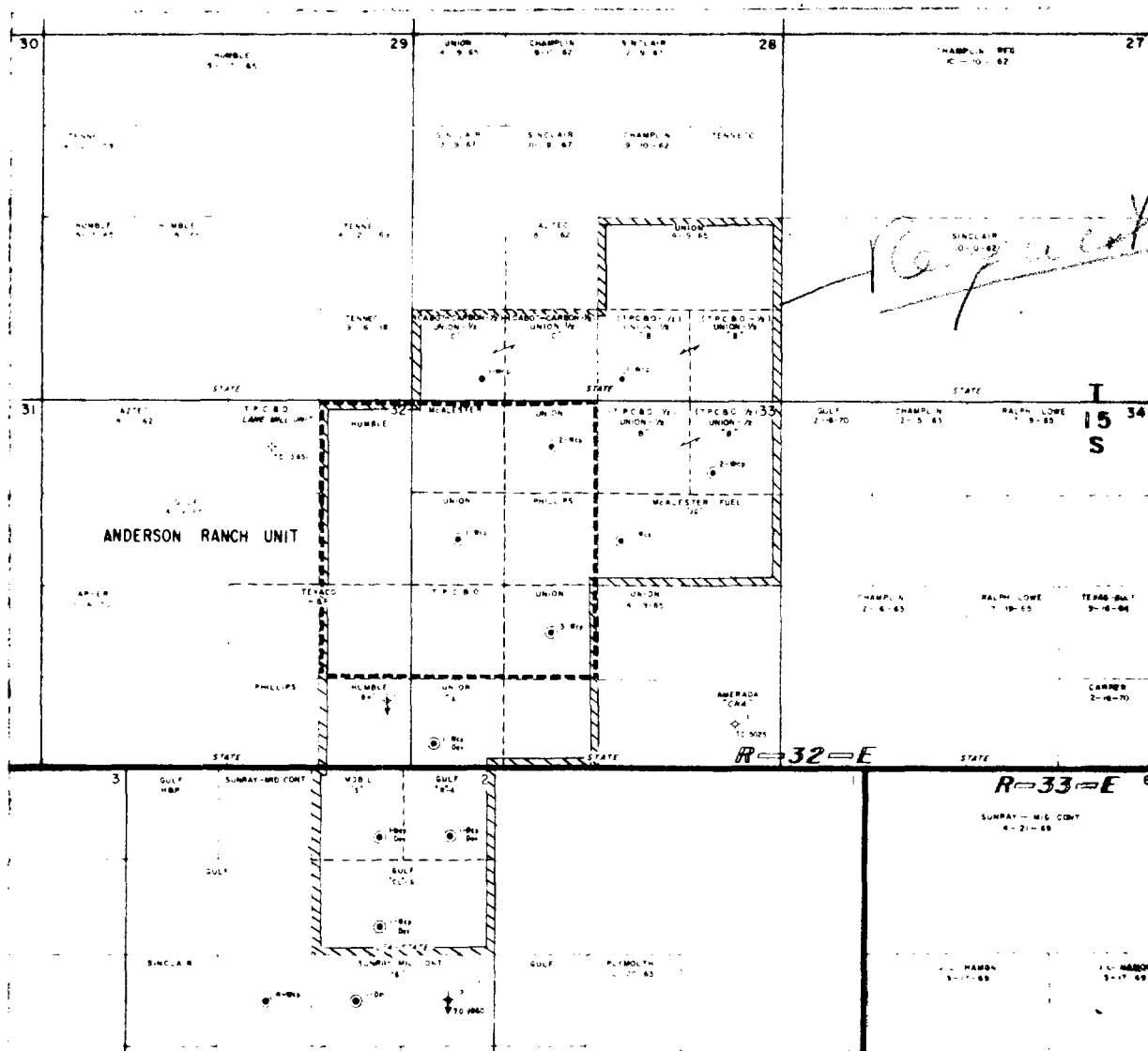


# LABORATORY REPORT

	Sample 1	Sample 2
Date Sampled	11-10-52	11-10-52
Sample Depth	1000'	1000'
Sampling Pressure	1602 psi	1602 psi
Bubble Point	1005 psi @ 100'	1002 psi @ 100' ✓
Pressure Bubble Point Pressure	1005	1002
Specific Gravity	1.023	1.023 ✓
Viscosity at Bubble Point	1.023 cp	1.023 cp
Gravity of Fluid	1.023 g/cc	1.023 g/cc
Compressibility Factor	$1.023 \times 10^{-3}$ psi <sup>-1</sup>	$1.023 \times 10^{-3}$ psi <sup>-1</sup>

ILLEGIBLE

INOC CASE NO. 2507  
 UNION OIL EXHIBIT NO. E  
 DATE 3/28/52 BY EM



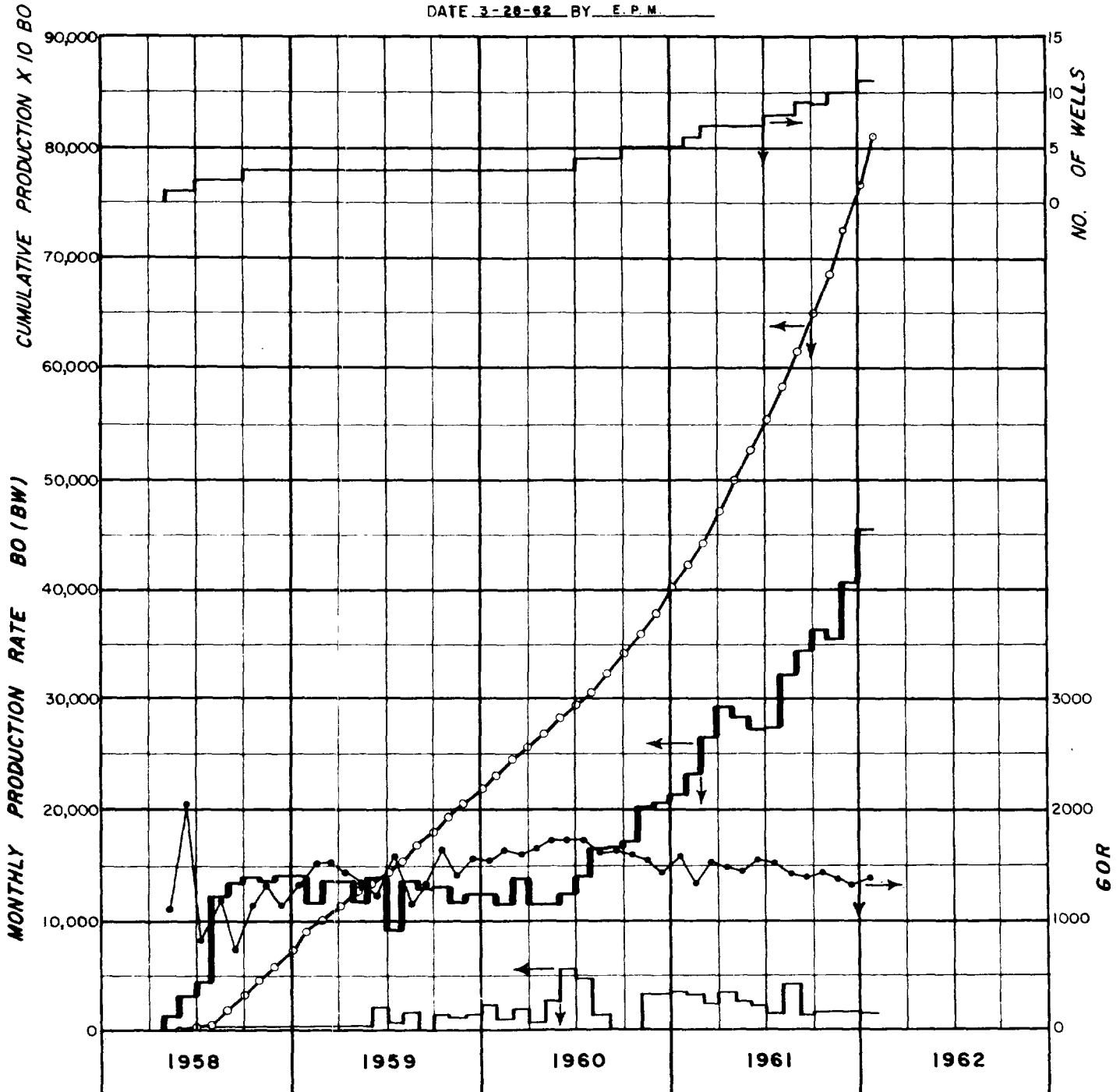


UNION OIL COMPANY OF CALIFORNIA  
CENTRAL DIVISION — ROSWELL DISTRICT

NO. ANDERSON RANCH (Wcp.) FIELD  
LEA CO., NEW MEXICO

— FIELD HISTORY —

NMOCC CASE NO. 2507  
UNION OIL EXHIBIT NO. H  
DATE 3-28-62 BY E. P. M.



LARGE FORMAT  
EXHIBIT HAS  
BEEN REMOVED  
AND IS LOCATED  
IN THE NEXT FILE

REPORT OF TEST OF OIL WELL  
WELL NO. 10001 - 10001, 10001

NO. 10001 RANCH (WELL) FIELD  
10001, 10001, 10001

PRESSURES AND PRODUCTION RATES DURING INTERFERENCE TEST

	Day						
	1	2	3	4	5	6	7
<u>State 1-33</u>							
BOFD	1006	946	1015	1072	1121	638	shut-in
Choke - in.	26/64	27/64	27/64	27/64	29/64	18/64	"
BHP - psi	2966	2939	2916	2894		2981	3050
<u>State C 1-28</u>							
BOFD	244	254	241	234	204	97	shut-in
Choke - in.	21/64	21/64	21/64	21/64	21/64	21/64	"
BHP - psi	1446	1415	1400	1385	1396		2994
<u>State B Lease</u>							
BOFD	544	599	662	608	502	shut-in	shut-in
<u>State B 1-28</u>							
Choke - in.	14/64	14/64	13/64	13/64	13/64	"	"
BHP - psi	2862	2788	2758	2750	2785	"	2840
<u>State B 2-33</u>							
Choke - in.	13/64	14/64	14/64	14/64	17/64	"	"
BHP - psi	3012	3029	2983	2915	2946	"	3006

Total production of all wells during 6-day test: 9,978 BO

After the seven days, wells went back on production, except for the observation well. Between February 8, 1962, and February 22, 1962, wells produced the remainder of their respective allowables. Well State 1-33 produced two allowables. All wells were shut in February 22, 1962. On February 27, 1962, BHP was measured in all wells. The BHP in the observation well had dropped from 3094 psi (February 4, 1962) to 3065 psi (February 27, 1962), although the well was shut-in for the entire month.

ILLEGIBLE

NMCCC CASE NO. 2507  
UNION OIL EXHIBIT NO. J  
DATE 3/28/62 BY EPM

K

K

K

K

K

K

K

K

K

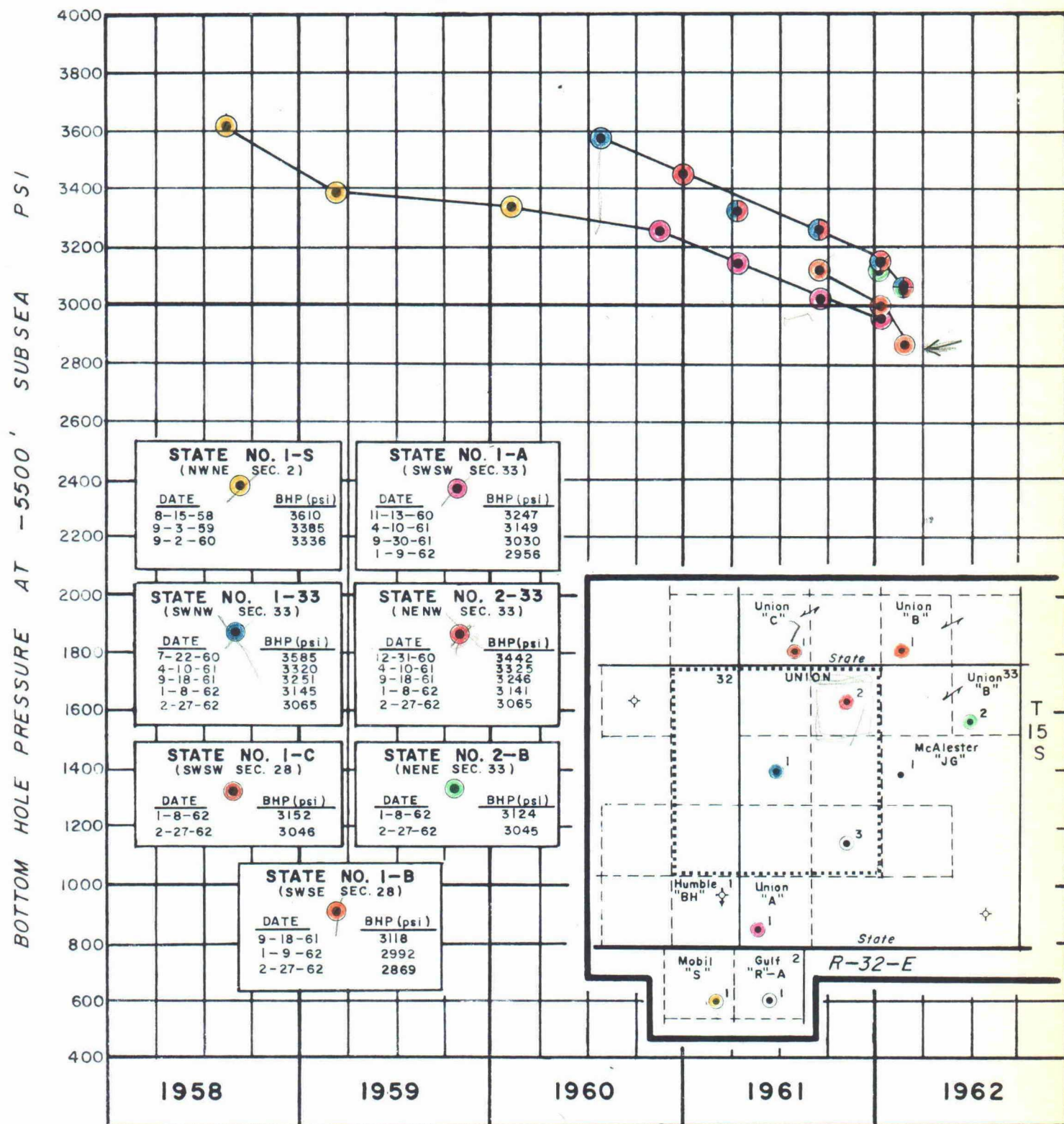
ILLEGIBLE

UNION OIL COMPANY OF CALIFORNIA  
CENTRAL DIVISION — ROSWELL DISTRICT

NO. ANDERSON RANCH (Wcp.) FIELD  
LEA CO., NEW MEXICO

— BHP HISTORY BY WELLS —

NMOCC CASE NO. 2507  
UNION OIL EXHIBIT NO. L  
DATE 3-28-62 BY E.P.M.



UNION OIL COMPANY OF CALIFORNIA  
 PETROLEUM DIVISION - ROCKWELL DIVISION

NO. ANDERSON RANCH (Wet.) FIELD  
 LEA CO., NEW MEXICO

MATERIAL BALANCE CALCULATION  
STATE 1-33

Production Period From 7-16-60 to 12-31-60

$$\begin{aligned} \text{Oil in Place} &= \frac{N_1}{C_g \times \Delta p} \times \frac{B_o}{B_{oi}} & \Delta p &= 140 \text{ psi} \\ & & N_p &= 20,510 \\ \text{Oil in Place} &= \frac{20,510}{22.2 \times 10^{-6} \times 140} \times \frac{1.96}{1.967} & B_{oi} &= 1.96 \\ \text{Oil in Place} &= \underline{6,620,000 \text{ BO}} \end{aligned}$$

VOLUMETRIC CALCULATIONS

$$\begin{aligned} \text{OIP/Acre} &= \frac{7750 \times \phi \times (1-S_w) \times h}{B_{oi}} \\ \text{OIP/Acre} &= \frac{7750 \times 0.096 \times (1-0.25) \times 64}{1.96} \\ \text{OIP/Acre} &= \underline{18,240 \text{ BO}} \quad (285 \text{ BO/A-ft}) \end{aligned}$$

$$\text{Area affected by State #1-33: } \frac{6,620,000}{18,240} = \underline{363 \text{ acres}}$$

If well drained 40 acres only, the net pay thickness had to be:

$$\begin{aligned} \frac{N}{40 \text{ acres}} &= \frac{6,620,000}{40} = 165,500 \text{ BOIP/acre} \\ \frac{165,500}{285} &= \underline{581 \text{ ft.}} \end{aligned}$$

ILLEGIBLE

NMOCC CASE NO. 2507  
 UNION OIL EXHIBIT NO. M  
 DATE 3/28/62 BY EPM

1

ILLEGIBLE

ALL INFORMATION CONTAINED  
HEREIN IS UNCLASSIFIED  
DATE 10/26/02 BY 60321

UNITED STATES DEPARTMENT OF THE INTERIOR  
GENERAL DIVISION - ROSWELL DISTRICT

NO. ANDERSON RANCH (WOLF.) FIELD  
LEA CO., NEW MEXICO

1-0

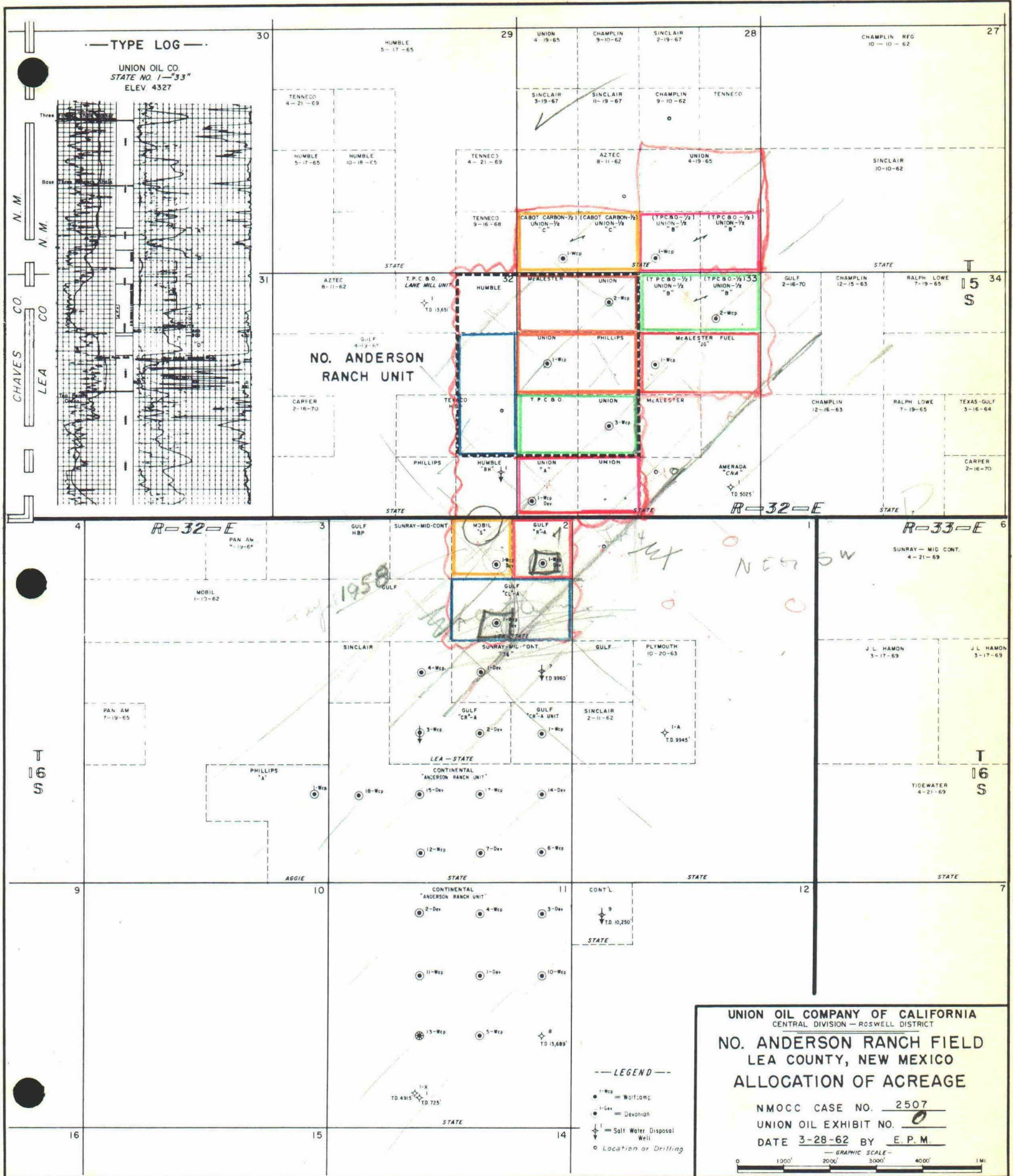
PROPOSED SPECIAL RULES AND REGULATIONS FOR THE  
NORTH ANDERSON RANCH (WOLFCAMP) POOL

- Rule 1. Each well completed or recompleted in the North Anderson Ranch Wolfcamp Pool or in the Wolfcamp formation within one mile of said pool, and not nearer to nor within the limits of another designated Wolfcamp Pool, shall be spaced, drilled, operated and prorated in accordance with the Special Rules and Regulations hereinafter set forth.
- Rule 2. Each well completed or recompleted in the North Anderson Ranch Wolfcamp Pool shall be located in a unit containing 80 acres, more or less, which unit shall contain two governmental quarter-quarter sections joined by a common bordering side; provided, however, that nothing contained herein shall be construed as prohibiting the drilling of a well on each of the quarter-quarter sections in the unit; provided further that wells to which Rule 3 of the Special Rules and Regulations for the North Anderson Ranch Wolfcamp Pool applies shall be excluded from Rule 2.
- Rule 3. ~~Any well which was drilled to and producing from the North Anderson Ranch Wolfcamp Pool prior to April 1, 1962, which presently has 40 acre or more dedicated to it and to which cannot be dedicated an 80-acre unit which can reasonably be presumed to be productive of oil from the North Anderson Ranch Wolfcamp Pool, shall continue to be assigned an allowable equal to the normal unit allowable times the 40 acre proportional factor for said pool of 3.77 times the ratio the total dedicated acreage bears to 40 acres.~~
- Rule 4. The initial well on any 80-acre unit in said pool shall be located in either the NE $\frac{1}{4}$  or the SW $\frac{1}{4}$  of a governmental quarter section, such well to be no closer than 330 feet to the boundary lines of the quarter-quarter section in which the well is located.
- Rule 5. For good cause shown, the Secretary-Director of the Commission may grant exception to the requirements of Rule 2 without notice and hearing when the application is for a non-standard unit comprising a single quarter-quarter section or lot. All operators offsetting the proposed non-standard unit shall be notified of the application by registered mail, and the application shall state that such notice has been furnished. The Secretary-Director of the Commission may approve the application if, after a period of 30 days, no offset operator has entered an objection to the formation of such non-standard unit.

The allowable assigned to any such non-standard unit shall bear the same ratio to a standard allowable in the North Anderson Ranch Wolfcamp Pool as the acreage in such non-standard unit bears to 80-acres.

- Rule 6. ~~An 80-acre proration unit (79 through 81 acres) in the North Anderson Ranch Wolfcamp Pool shall be assigned an 80-acre proportional factor of 4.77 for allowable purposes, and in the event there is more than one well on an 80-acre proration unit, the operator may produce the allowable assigned to the unit from the wells on the unit in any proportion.~~





Case No.

2507

Large Exhibit.

LARGE FORMAT  
EXHIBIT HAS  
BEEN REMOVED  
AND IS LOCATED  
IN THE NEXT FILE