

Case 2516

CASING AND CEMENTING PROGRAMS
WATER INJECTION WELLS
PRESSURE MAINTENANCE PROJECT
GALLEGOS CANYON UNIT
CHA CHA GALLUP FIELD

1. Gallegos Canyon Unit No. 97 - (Section 23, T-28-N, R-13-W)

8-5/8" casing set at 214' with 200 sacks cement.
4-1/2" casing set at 5876' with 200 sacks cement.

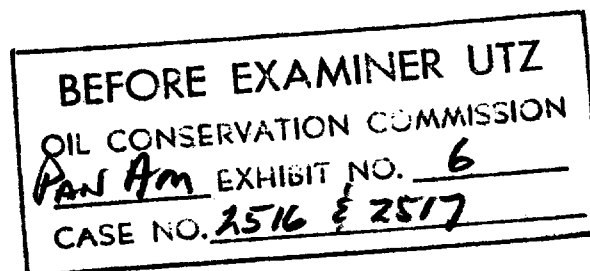
2. Gallegos Canyon Unit No. 112 - (Section 23, T-28-N, R-13-W)

8-5/8" casing set at 212' with 150 sacks cement.
4-1/2" casing set at 5699' in stages. First stage
cemented with 125 sacks 6% gel cement plus 100
sacks neat. Second stage with 150 sacks 6% gel
cement.

PERTINENT DATA SHEET

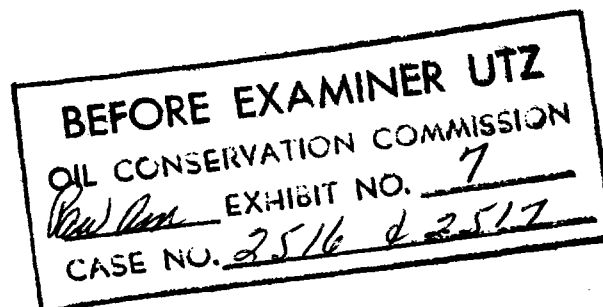
RESERVOIR ROCK AND RESERVOIR FLUID PROPERTIES
SOUTHEAST AREA OF CHA CHA GALLUP FIELD

Original Reservoir Pressure, psig	1560
Reservoir Temperature, °F	158
Saturation Pressure, psig	1560
Estimated Original Solution Gas-Oil Ratio, cu. ft./bbl.	649
Original Formation Volume Factor	1.392
Crude Viscosity, cp	.415
Crude Gravity, °API	43
Producing Mechanism	Solution Gas Drive
Average Porosity ("A" Sand), %	15.4
Average Porosity ("B" Sand), %	8.4
Average Permeability ("A" Sand), Md	50.4
Average Permeability ("B" Sand), Md	0.32
Average Water Saturation ("A" Sand), %	30
Average Water Saturation ("B" Sand), %	40
Average Net Pay Thickness ("A" Sand), ft.	4
Average Net Pay Thickness ("B" Sand), ft.	4.5
Gas-Oil or Water-Oil Contacts	None Indicated
Type Accumulation	Stratigraphic Trap (Sand Bar)



COMPLETION DATA
C. J. HOLDER WATER WELL NO. 1

Location	910' FNL & 1850' FEL, Section 16, T-28-N, R-13-W, San Juan County, New Mexico
Elevation	6055' DF
Total Depth	7150'
Top Morrison	6467'
Surface Casing	13-3/8" CSA 206'
Oil String Casing	1191' of 9-5/8" and 5949' of 8-5/8" CSA 7,140'
Perforations	158' of perforations between 6573'-7122'
Stimulation	Sand-water frac with 93,500 gals. water and 55,000 lbs. 20-40 mesh sand.
Test Rates	Pump 1500 barrels water per day with pump set at 1000' and static fluid level at 500'. Estimated capacity of 10,000 barrels water per day with pump set at 4000'.



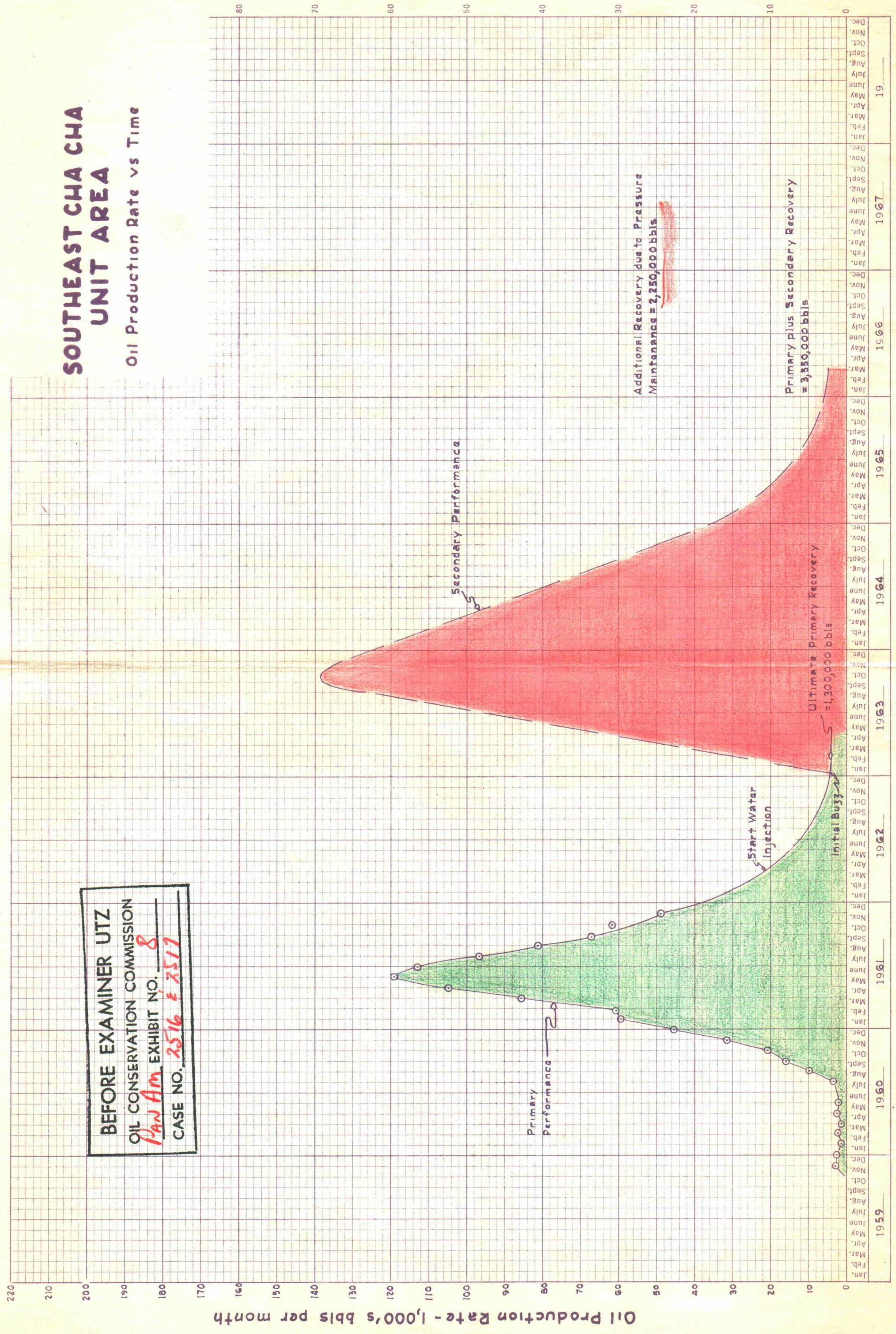
LARGE FORMAT
EXHIBIT HAS
BEEN REMOVED
AND IS LOCATED
IN THE NEXT FILE

LARGE FORMAT
EXHIBIT HAS
BEEN REMOVED
AND IS LOCATED
IN THE NEXT FILE

SOUTHEAST CHA CHA UNIT AREA

Oil Production Rate vs Time

BEFORE EXAMINER UTZ
OIL CONSERVATION COMMISSION
Exhibit No. 8
CASE NO. 2516 & 2517

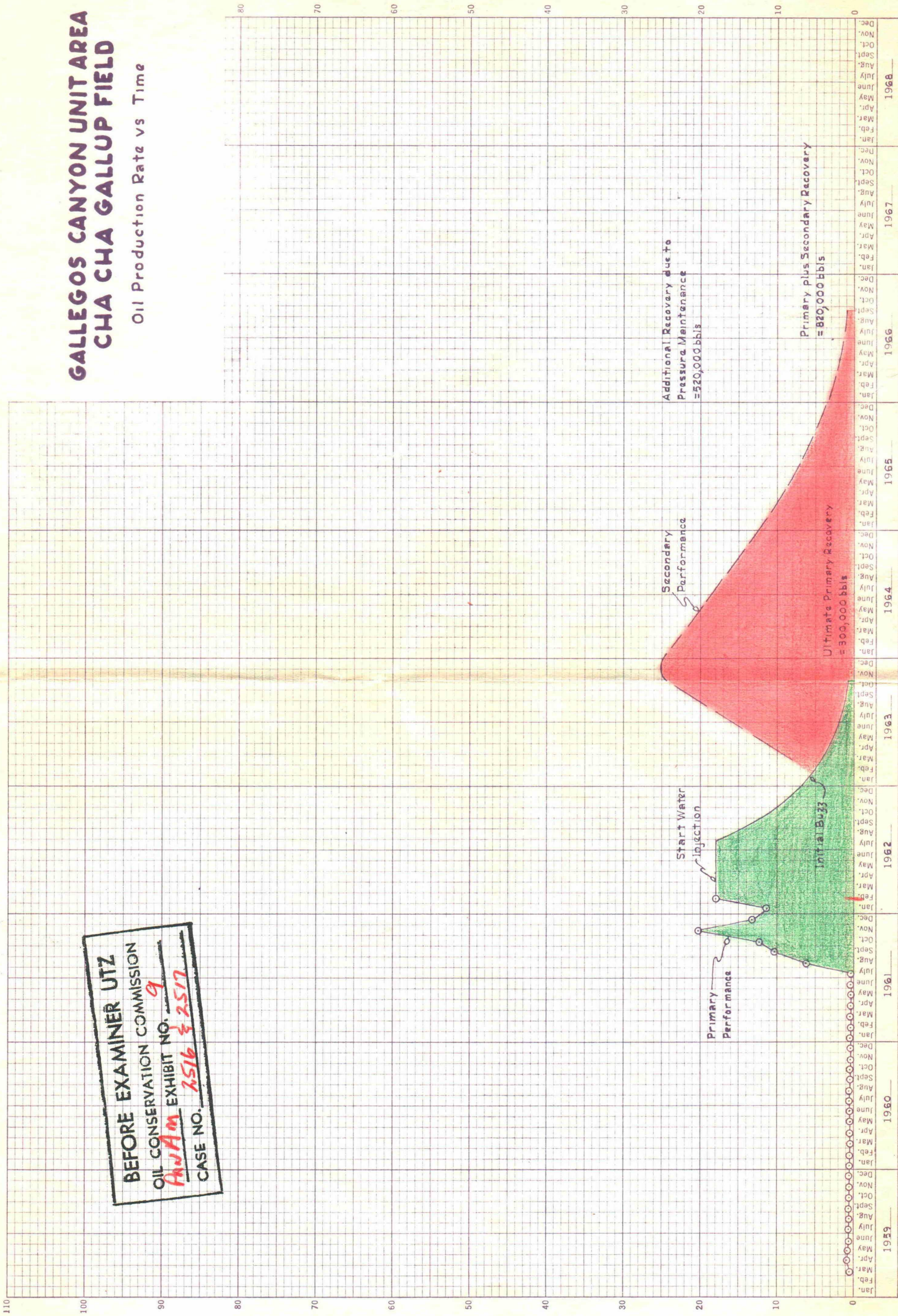


Oil Production Rate 1,000's Barrels Per Month

BEFORE EXAMINER UTZ
OIL CONSERVATION COMMISSION
OIL CONSERVATION COMMISSION
EXHIBIT NO. 9
AmAm
CASE NO. 2516 & 2517

GALLEGOS CANYON UNIT AREA CHA CHA GALLUP FIELD

Oil Production Rate vs Time



GALLEGOS CANYON UNIT AREA CHA CHA GALLUP FIELD

Oil Production Rate vs Time

