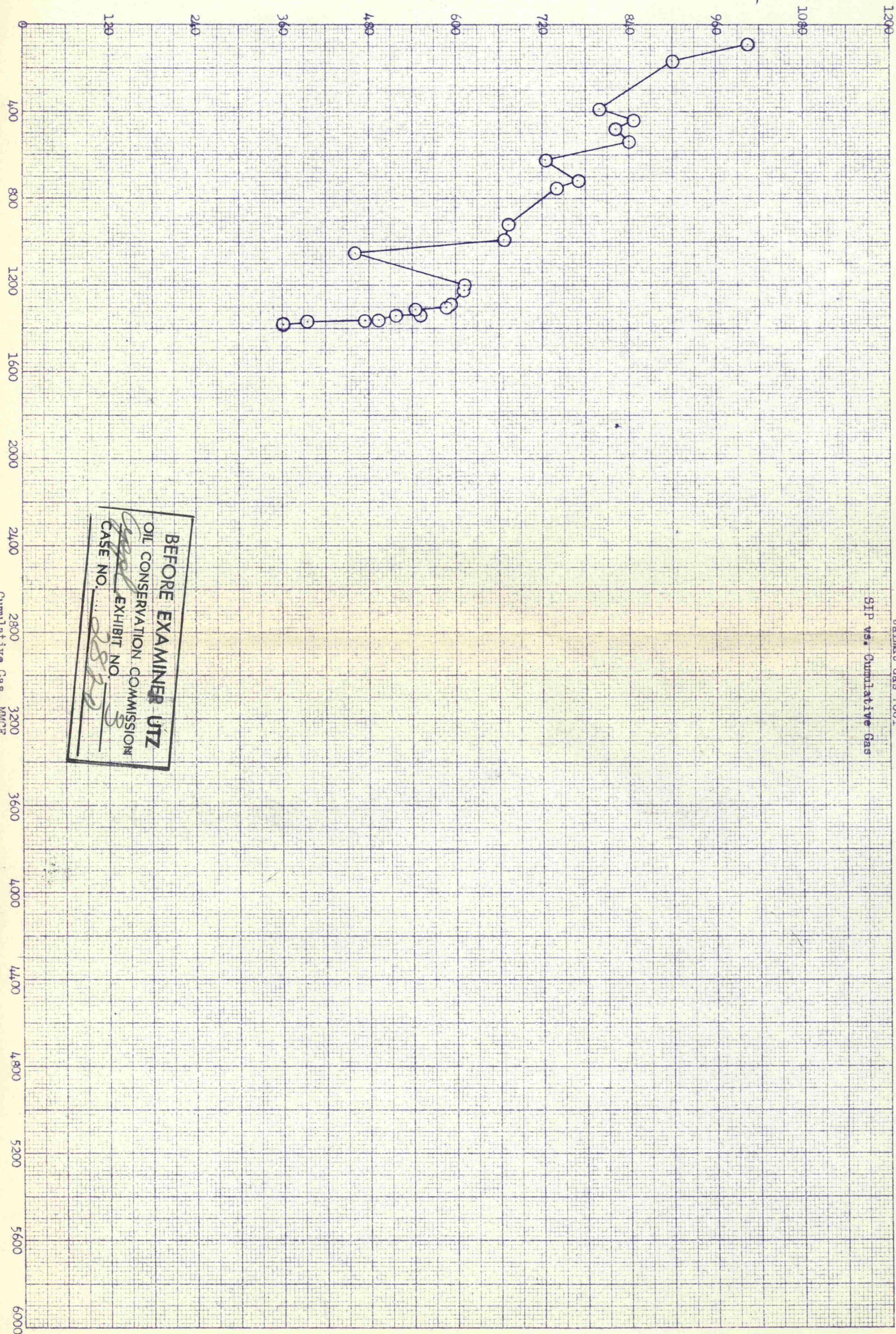


SIP, psig

State "A" a/c-1 Well #6  
New Mexico District  
Jalnet Gas Pool

SIP vs. Cumulative Gas



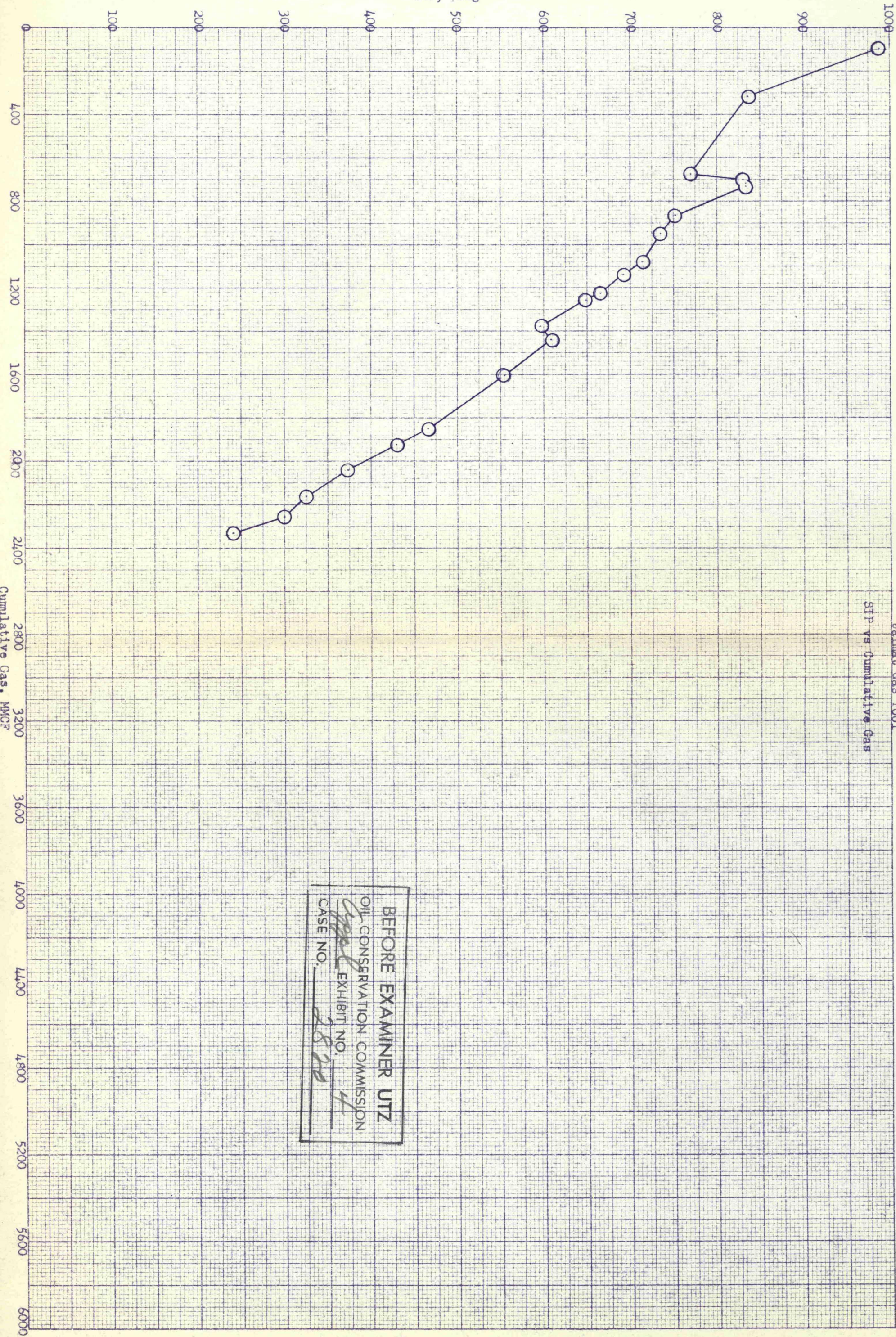
BEFORE EXAMINER UTZ  
OIL CONSERVATION COMMISSION  
EXHIBIT NO. 2872  
CASE NO. 2872



SIP, psig

State "A" A/C-1 Well #3  
New Mexico District  
Jalmat Gas Pool

SIP vs Cumulative Gas



BEFORE EXAMINER UTZ  
OIL CONSERVATION COMMISSION  
CASE NO. 2820  
EXHIBIT NO. 4

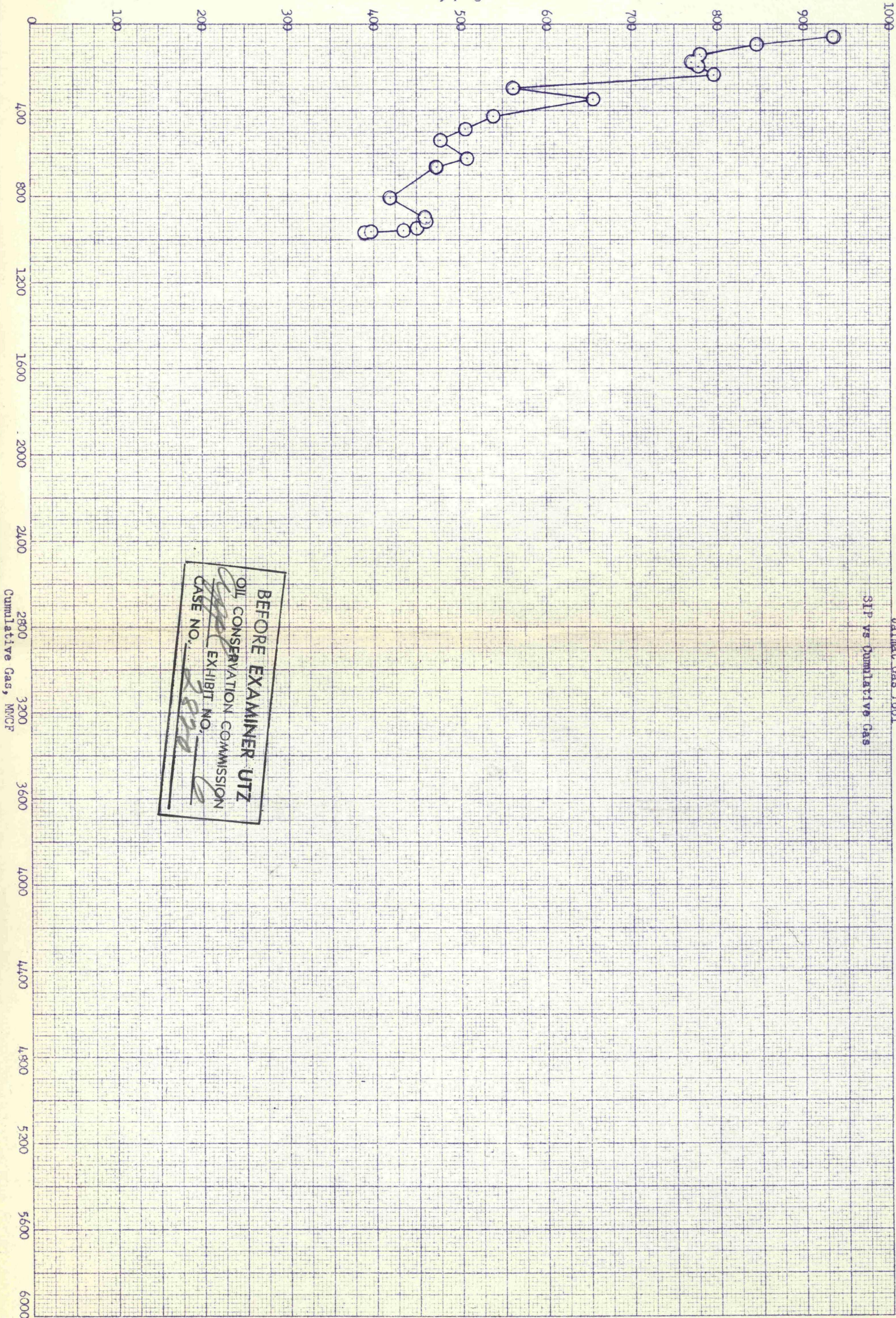


LARGE FORMAT  
EXHIBIT HAS  
BEEN REMOVED  
AND IS LOCATED  
IN THE NEXT FILE



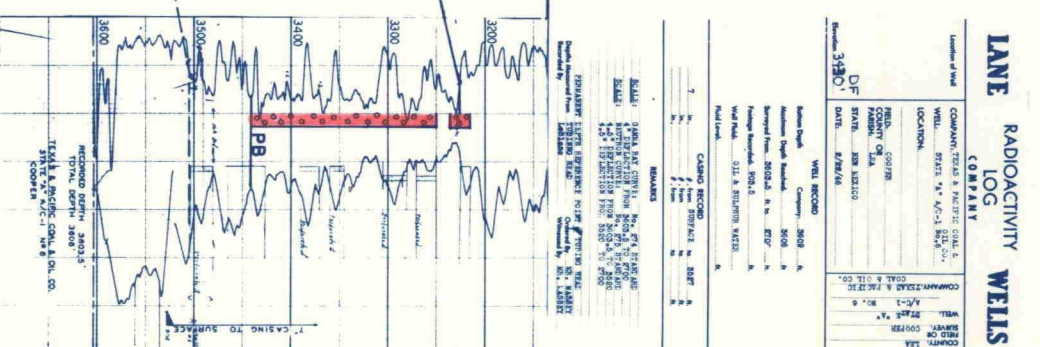
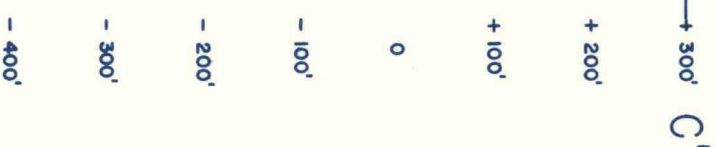
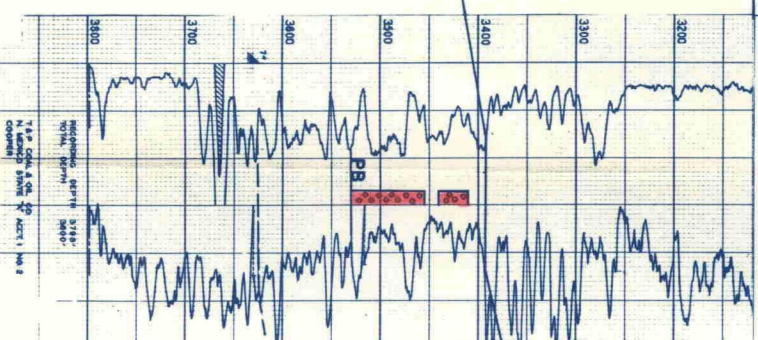
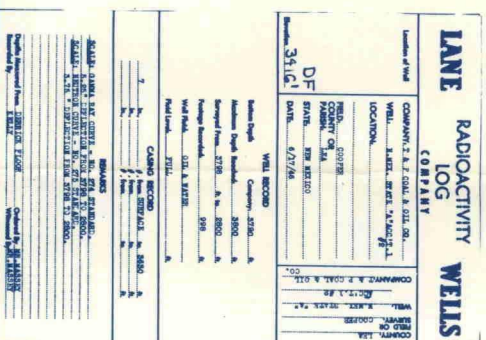
SIP, psig

State "A" A/C-1 Well #4  
New Mexico District  
Jalmat Gas Pool  
SIP vs Cumulative Gas



BEFORE EXAMINER UTZ  
OIL CONSERVATION COMMISSION  
EXHIBIT NO. 2072  
CASE NO. 2072



[illegible]

Workover 3/62: Set retainer at 3656' & azqd. Perf. 3634' & 3638' and 3642' w/3 abrasive jet holes at each interval. SOT w/15,000 gals & 15,000#. Pmpd 50 BO & 15 BW/12 hrs., GOR 4.35

Workover 7/9/46: PB 3610'  
Perf. 3410'-3440', 3455'-3475',  
and 3510'-3530'. Dry. PB 3530'  
Shot 3455'-3530' w/135 qts.  
nitro. Absolute Open Flow: 4, 027  
MCFPD

SOT 11/16/62: 20,000 gals and 60,000# w/500# Adconite. Del. Before: 284 MCFPD. Del. After: 3,850 MCFPD. Absolute Open Flow: 4,696 MCFPD

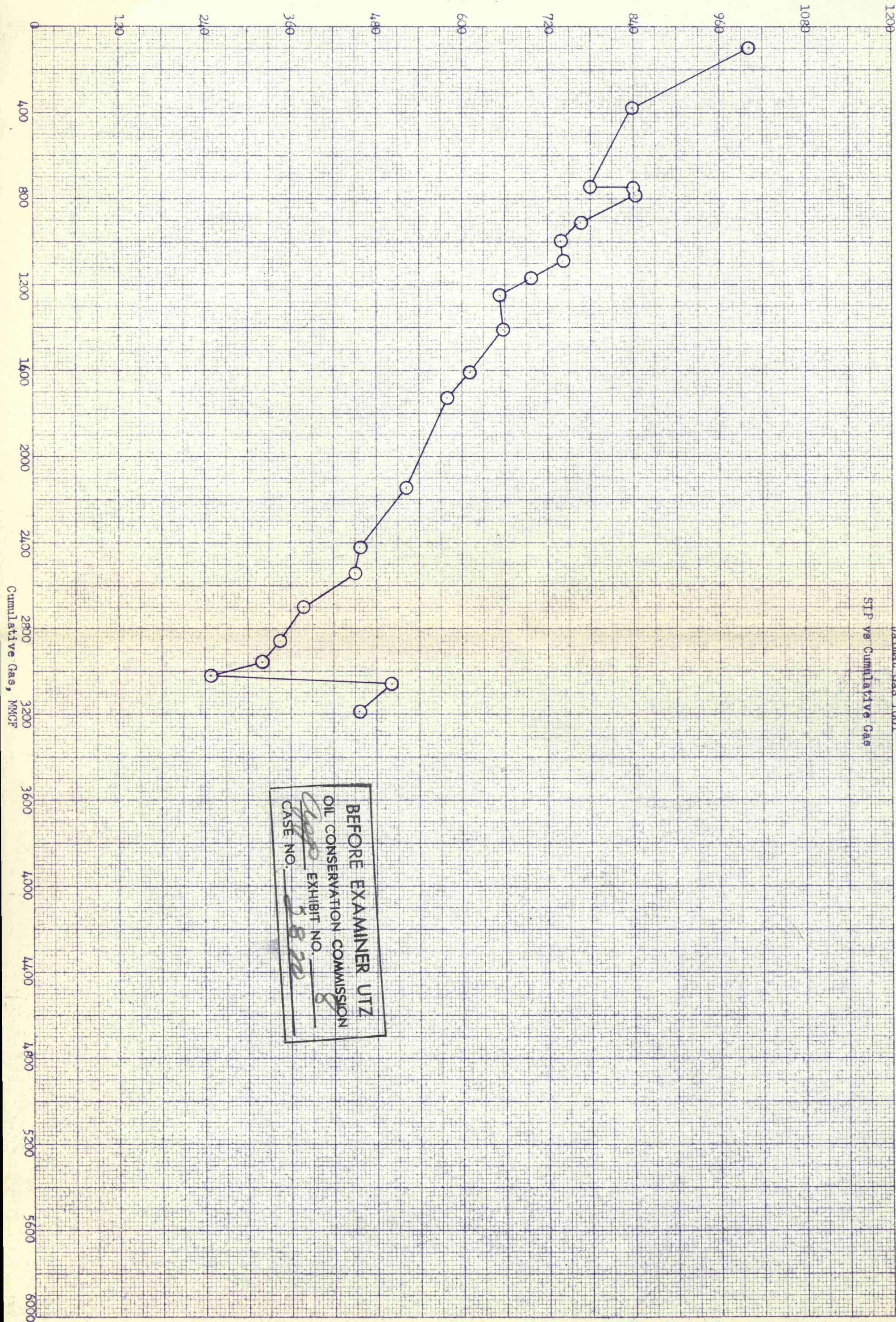
BEFORE EXAMINER UTZ  
OIL CONSERVATION COMMISSION  
EXHIBIT NO. 4407  
CASE NO. 28207

Workover 5/15/46: PB 3441',  
Perf. 3215' - 3235', 3250' - 3270',  
3280' - 3305' and 3345' - 3441'.  
Treat w/ 5,000 gals. Dry.  
Shut w/ 330' tested 3250' -  
3390'. Tested 6,280 McFPD



SIF, psig

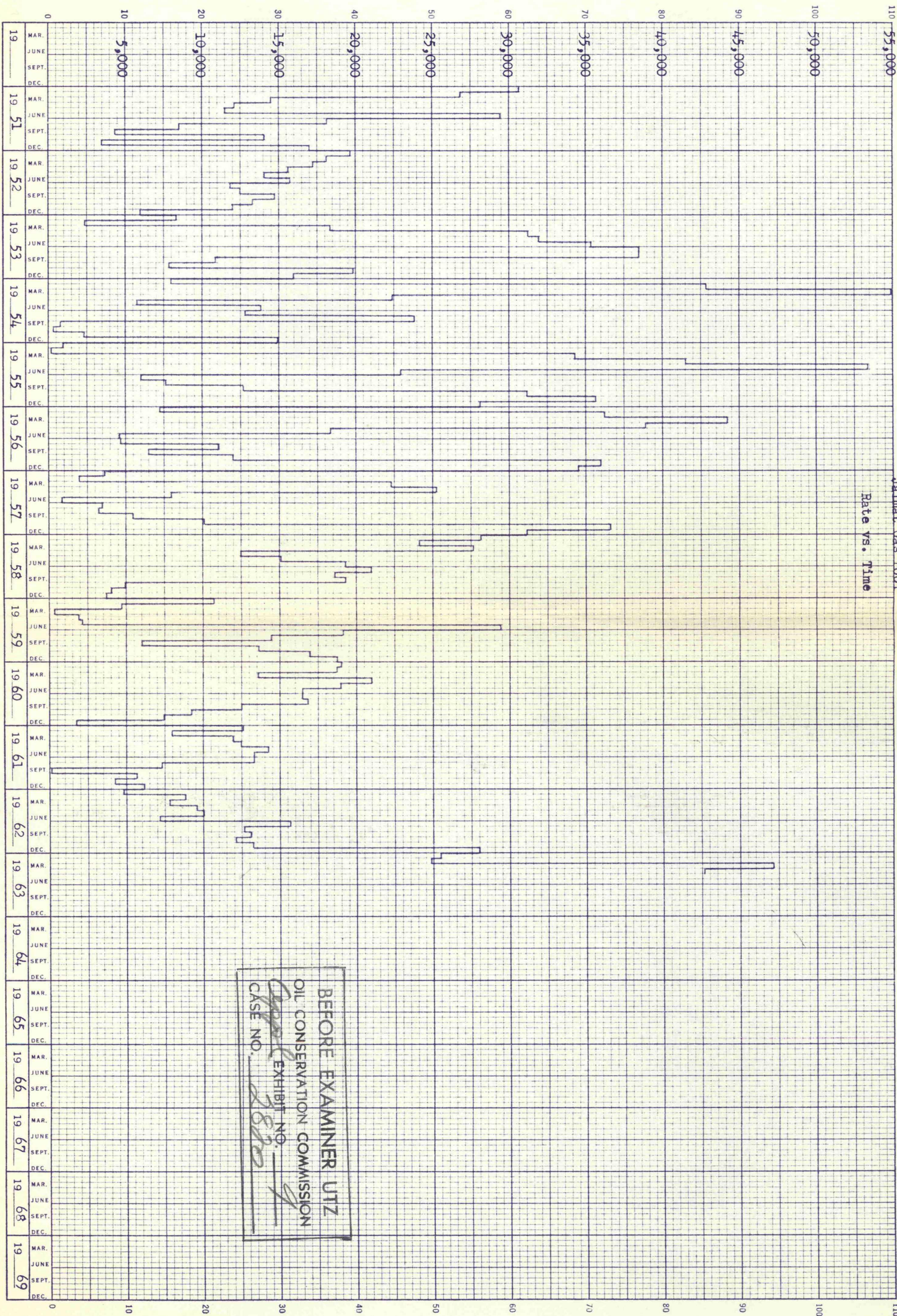
State "A" A/C-1 Well #2  
New Mexico District  
Jalmat Gas Pool  
SIF vs Cumulative Gas



BEFORE EXAMINER UTZ  
OIL CONSERVATION COMMISSION  
CASE NO. 2822  
EXHIBIT NO. 8



Gas Production, MCFPM



BEFORE EXAMINER UTZ  
OIL CONSERVATION COMMISSION  
EXHIBIT NO. 2820  
CASE NO. 2820