

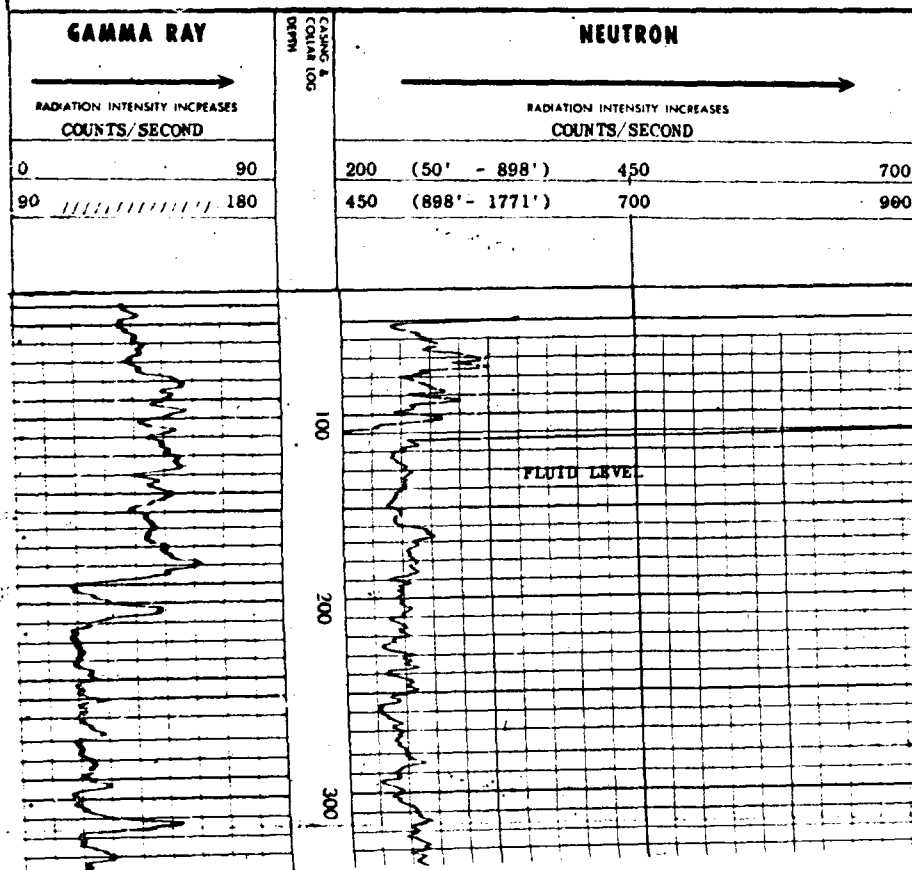
LARGE FORMAT
EXHIBIT HAS
BEEN REMOVED
AND IS LOCATED
IN THE NEXT FILE

WELLEX RADIOACTIVITY 306		COMPANY NATIONAL DRILLING COMPANY WELL LEAVITT # 9 FIELD ATOKA County EDDY State NEW MEXICO File	
COMPANY NATIONAL DRILLING COMPANY WELL LEAVITT # 9 FIELD ATOKA County EDDY State NEW MEXICO Other Logs		Log Level: 1680' FNL 990' FNL SEC. 13 TWP. 18-S RGE. 26-E Log measured from: 1680' FNL 990' FNL Drilling measured from: 1680' FNL 990' FNL	
Type Log: GAMMA Date: 3-22-60 Total Depth Drilled: 1770 Present Depth Drilled: 1770 Total Depth Within: 1770 Survey Depth: 1770 Survey Rate: 40 Head Date: - WATER BASE - Mud: MUD Type Fluid in Hole: MUD Solids PM: 0 Weight Solids: 84 Fluid Level: 84 Meter, Hole Temp: 84 Recorded by: N. CARTER Witnessed by: H. N. JONES		SOLE HOLE RECORD From 0 To 900 Casing Record From 0 To 900	

Truck No. 321-4018		Tool Serial No. 9834	
Tool Model No. 2000		Tool Model No. 2000	
Detector Model No. 1-E-11		Detector Model No. 1-C-8	
Type GEIGER-MUELLER		Type GEIGER-MUELLER	
Length 28"		Length 14"	
Distance to N. Source 107'		Source Model No. 400	
Reference Literature: WELLEX RADIOACTIVITY LOGGING BULLETIN A-126		Serial No. 18	
Spacing 12"		Type RaBe	
Strength 6.1 x 10 ⁶ NEUTRONS/SECOND			

LOGGING DATA										
Gamma Ray Setting					Neutron Setting					
Depth	To	Speed	T. C.	Sensitivity	Zero	Scale	T. C.	Sensitivity	Zero	Scale
From 2' 40"	To 898'	• 2	90 CPS	0	10 CPS/CD	2	500 CPS	4	CD 1	25 CPS
898'	1771'	• 2	90 CPS	0	10 CPS/CD	2	500 CPS	18	CD 1	25 CPS
1771'	450'	• 2	90 CPS	0	10 CPS/CD	2	500 CPS	4	CD 1	25 CPS
450'	1771'	• 2	90 CPS	0	10 CPS/CD	2	500 CPS	18	CD 1	25 CPS

REMARKS: * RECORDED SPOTS ON LEFT INDICATE G/R LOGGING SPEED



FORE EXAMINER UTZ
 INFORMATION COMMISSION
 Apr 1 (EXHIBIT NO. 3291)

EXHIBIT "E"
 TYPICAL LOG
 Atoka San Andres Field
 Eddy County, New Mexico