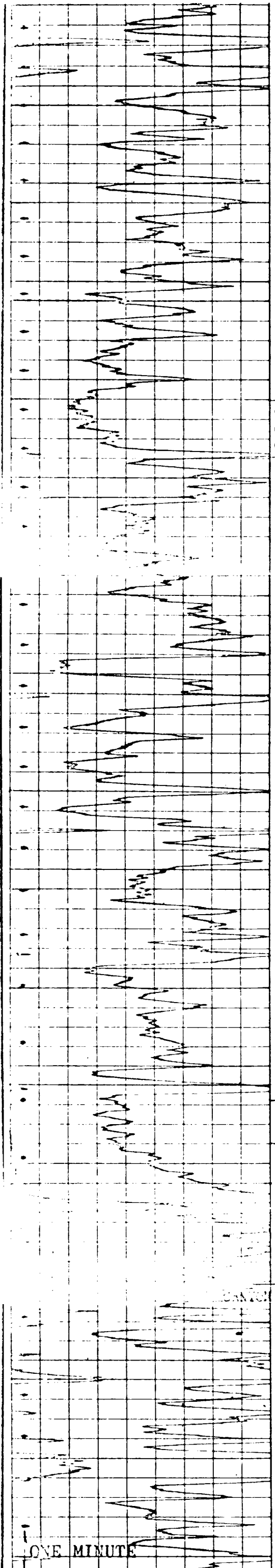
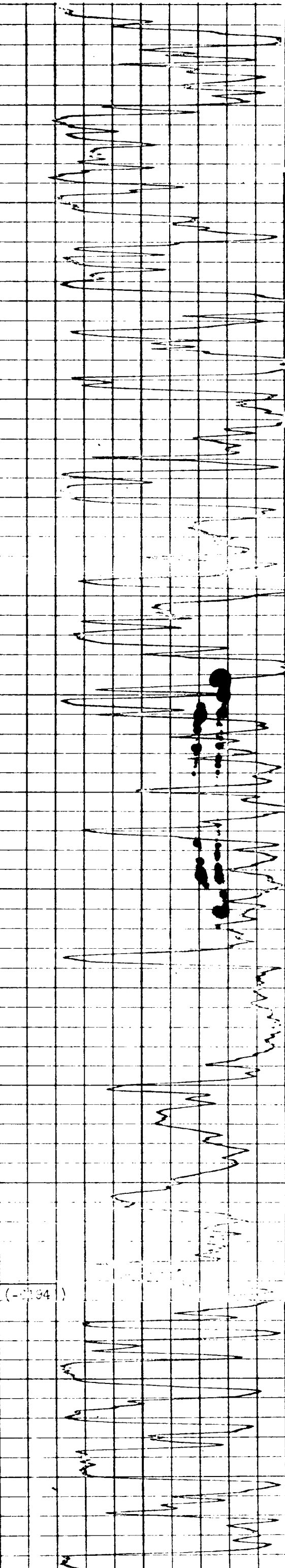


HUMBLE OIL & REFINING COMPANY
SOUTH FOUR LAKES UNIT NO. 6
GAMMA RAY-NEUTRON
PENN ZONE



9800
9900
9900
10000
10100
10200
10300
10300



DST #2 9901-29'
(thru perfs. in
7" csg) TO 5 hrs
good blow w/gas
to sfc in 21 min;
oil in 65 min;
Flwd 13 BOPH w/gas
@ 620 MCFPD

ZONE "A"

PERF 7" csg. from 9904-9932' on
Water Miller log 12 jets/foot.
This is 3' low to zone on open
hole logs. Acidized w/2000 gals
15% acid w/inj. rate of 3.2 BPM.

ZONE "B"

DST #1 10,266'-
10,315' TO 2 1/2
hrs; good blow
immediately w/gas
to sfc in 14 min.
@124 MCFPD Rec. 1050' free oil.
350' water, & 90' free oil.
chl. in water 51,000 PPM.

ZONE "C"

CANAL 10352' (-0194)

ONE MINUTE

HUMBLE OIL & REFINING COMPANY

SOUTH FOUR LAKES UNIT NO. 6

GAMMA RAY-NEUTRON

PENN ZONE

DET #2 9901-29'
(thru perfs. in
7" csg) TO 5 hrs
good blow w/gas
to sfc in 21 min;
oil in 65 min;
Flwd 13 BOPH w/gas
@ 620 MCFPD

ZONE "A"

PERF 7" csg. from 9901-9932' on
Wells collar log 12 ft./foot.
This is 3' low to zone on open
hole logs. Acidized w/2000 gals.
15% acid w/inj. rate of 5.2 BPM.

ZONE "B"

DST #1 10,266'-
10,315' TO 2 1/2
hrs; good blow
immediately w/gas
to sfc in 14 min.
@124 MCFPD Rec. 1050' free oil.
360' water, & 90' free oil
chl. in water 51,000 PPM.

ZONE "C"

DET #1 10302' (-C) 194

ONE MINUTE