

LARGE FORMAT  
EXHIBIT HAS  
BEEN REMOVED  
AND IS LOCATED  
IN THE NEXT FILE

LARGE FORMAT  
EXHIBIT HAS  
BEEN REMOVED  
AND IS LOCATED  
IN THE NEXT FILE

**LARGE FORMAT  
EXHIBIT HAS  
BEEN REMOVED  
AND IS LOCATED  
IN THE NEXT FILE**



Wm. A. & Ed. R. Hudson,  
Puckett B #18

300

400

500

600

700

800

900

Top of Anhydrite

Top of Salt

845  
858

Encountered salt water  
at 845' to 858'. Couldn't  
bail down.

App 1 Ex 8

CA 3664-3665

Exhibit #8



Wm. A. & Ed. R. Hudson-

Puckett B#13

300

400

500

600

700

800

800 E.U.

500 E.U.

200 E.U./C.D.

125 E.U./C.D.

4800 E.U.

3000 E.U.

shale

530

550

3 Bailers Water Per  
Hour 538-550

Santa  
Rosa

Top of Anhydrite

App E x 7

& 3664-3665

top salt

882

892

Exhibit #7



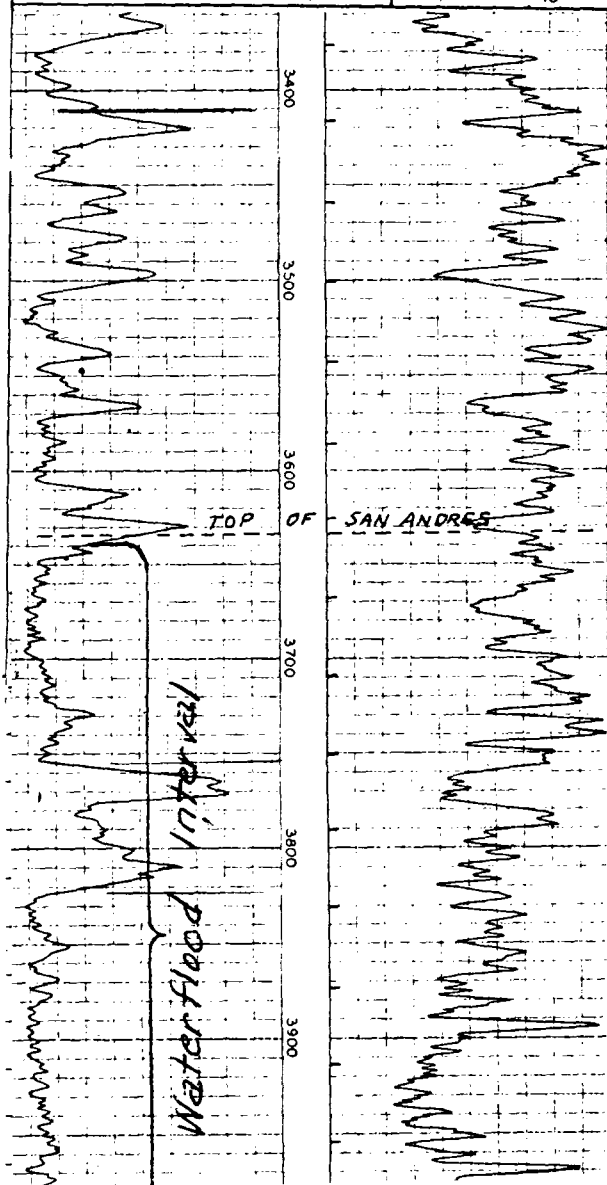
# LANE LOG WELLS COMPANY

Location of Well  SEC. 24- 17S-31E	COMPANY: (EMPEROR OIL CO.) HUDSON & HUDSON	FILE NO.  COUNT: LOCATION: EDDY STATE: N.M.
	WELL: PUCKETT NO. 16-P	
	FIELD: MALJAMAR	
	COUNTY: EDDY STATE: N.M.	
	LOCATION: SEC. 24-17S-31E	

LOG MEAS. FROM TOP OF ROTARY TABLE ELEV. 517-3933  
 DRLG. MEAS. FROM TOP OF ROTARY TABLE ELEV. \*  
 PERM. DATUM R.T. IS 11' ABOVE 5 1/2" B.H. ELEV. \*

TYPE OF LOG	GAMMA RAY	NEUTRON
RUN NO.	1	1
DATE	7-14-50	7-14-50
TOTAL DEPTH (DRILLER)	5323'	5323'
EFFECTIVE DEPTH (DRILLER)	5323'	5323'
TOP OF LOGGED INTERVAL	1800'	1800'
BOTTOM OF LOGGED INTERVAL	5316'	5316'
TYPE OF FLUID IN HOLE	OIL	OIL
FLUID LEVEL	FULL	FULL
MAXIMUM RECORDED TEMP.		600N
NEUTRON SOURCE STRENGTH & TYPE		8.25
SOURCE SPACING - IN.		9
LENGTH OF MEASURING DEVICE - IN.	36	3 5/8
O.D. OF INSTRUMENT - IN.	3 5/8	8
TIME CONSTANT - SECONDS	20	25
LOGGING SPEED FT./MIN.		
STATISTICAL VARIATION - IN.		
SENSITIVITY REFERENCE	274	275
RECORDED BY	RUNION HUDSON	RUNION HUDSON
WITNESSED BY		

CASING RECORD			OPEN (BORE) HOLE RECORD		
RUN NO.	SIZE-IN.	WT.-LB.	BIT SIZE-IN.	INTERVAL	
1	8 5/8		11	SURF. TO 864'	
1	5 1/2		7 7/8	864' TO 5308'	
			4 3/4	5308' TO T.D.	
				TO	
				TO	



# LANE LOG WELLS COMPANY

Location of Well	COMPANY: (EMPEROR OIL CO.) HUDSON & HUDSON WELL: PUCKETT NO. 16-P FIELD: MALJAMAR COUNTY: EDDY STATE: N.M. LOCATION: SEC. 24-17S-31E	FILE NO. COUNT FIELD WELL LOCATION STATE N.M.
LOG MEAS. FROM TOP OF ROTARY TABLE	ELEV. 3933	
ORIG. MEAS. FROM TOP OF ROTARY TABLE	ELEV. *	
PERM. DATUM R.T. IS 11' ABOVE 5 1/2" B.H.	ELEV. *	
TYPE OF LOG	GAMMA RAY	NEUTRON
RUN NO. 1	7-14-50	7-14-50
DATE	5323'	5323'
TOTAL DEPTH (DRILLER) BACK	1800'	1800'
EFFECTIVE DEPTH (DRILLER)	5316'	5316'
TOP OF LOGGED INTERVAL	OIL	OIL
BOTTOM OF LOGGED INTERVAL	FULL	FULL
TYPE OF FLUID IN HOLE		
FLUID LEVEL		
MAXIMUM RECORDED TEMP.		
NEUTRON SOURCE STRENGTH & TYPE		
SOURCE SPACING - IN.		
LENGTH OF MEASURING DEVICE - IN.	36	36
O.D. OF INSTRUMENT - IN.	3 5/8	3 5/8
TIME CONSTANT - SECONDS	8	8
LOGGING SPEED FT./MIN.	20	25
STATISTICAL VARIATION - IN.		
SENSITIVITY REFERENCE	274	275
RECORDED BY	RUNION	RUNION
WITNESSED BY	HUDSON	HUDSON

CASING RECORD				OPEN (BORE) HOLE RECOR			
RUN NO.	SIZE-IN.	WT.-LB.	INTERVAL	BIT SIZE-IN.	INTERVAL		
1	8 5/8		SURFACE TO 864'	11	SURF. TO 864'		
1	5 1/2		SURFACE TO 5308'	7 7/8	864' TO 5308'		
			TO	4 3/4	5308' TO T.D.		
			TO		TO		

