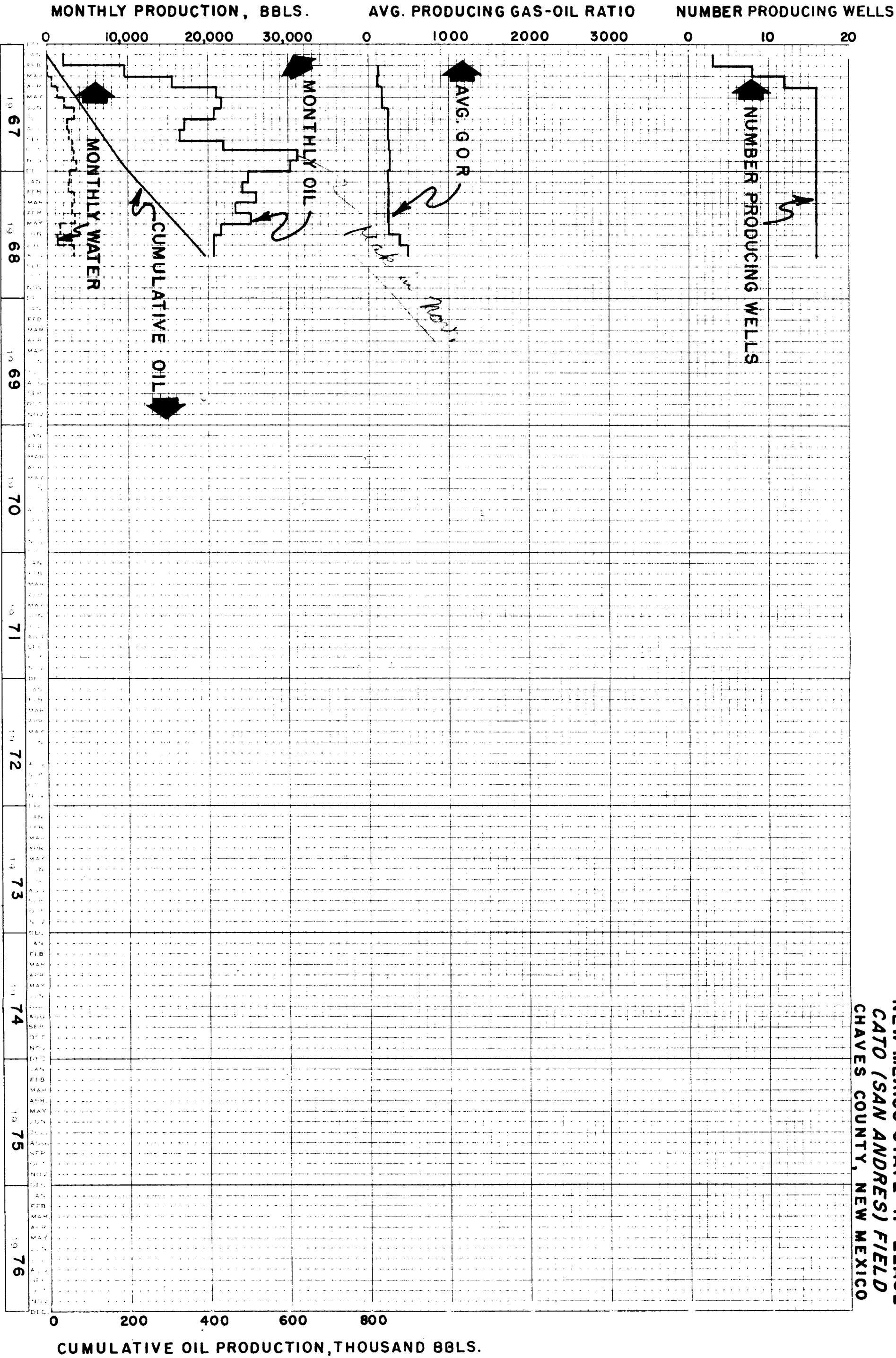


LARGE FORMAT
EXHIBIT HAS
BEEN REMOVED
AND IS LOCATED
IN THE NEXT FILE

LARGE FORMAT
EXHIBIT HAS
BEEN REMOVED
AND IS LOCATED
IN THE NEXT FILE

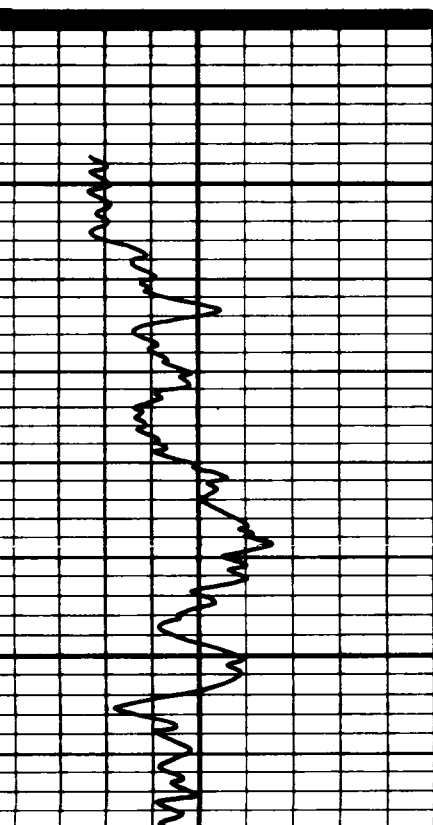
NEW MEXICO STATE "H" LEASE
CATO (SAN ANDRES) FIELD
CHAVES COUNTY, NEW MEXICO



GAMMA RAY Radiation Intensity Increases →		DEPTH	RESISTIVITY Ohms m ² /m	RESISTIVITY Ohms m ² /m
Company	SUN OIL CO.		Drillers T.D.	3598'
Well	STATE OF N.M. "H" NO.13		Lane-Wells F.R.	3591'
Field	CATO		Lane-Wells T.D.	3599'
County	CHAVES		Elevations:	
State	NEW MEXICO		K.B. 4153 D.F. 4151 G.L. 4142	

DETECTOR TYPE <u>D4G1-SCINT</u> DETECTOR LENGTH <u>4"</u>	BEAM WIDTH <u>6"</u> GUARD LENGTH <u>90"</u>
--	---

GAMMA RAY Radiation Intensity Increases →	DEPTH	RESISTIVITY Ohms m ² /m	RESISTIVITY Ohms m ² /m
API UNITS 10 API/CD	5"=100'	0 100 200 312.5 625 1250 50 150 250 416	0 10 20 30 40 50 5 15 25 35 45



2500

