

TOBAC FIELD
CHAVES COUNTY, NEW MEXICO

Location: 15 miles WSW of Milnesand, New Mexico in Township 8S,
Range 33E.

Discovery: Discovered in February, 1964, with the completion of
Cabot Corporation's Signal-State No. 1 well located
660' FNL and 660' FEL of Section 29, T8S, R33E.

Producing Horizon: Pennsylvanian Bough "C" Formation at a depth of 9050'.

Development: Development has proceeded pursuant to provisions contained
in New Mexico O.C.C. Order No. ^{R-2685} ~~2658~~ establishing
temporary 80-acre proration units. Currently there are
31 producing wells in the field and 11 wells in various
stages of drilling and completion. There are 3 dry
holes in the area.

Production: February production was 134,701 barrels of oil or 4,811
BOPD. There is some water production along the southeast
flank of the field.

BEFORE EXAMINER NUTTER	
OIL CONSERVATION COMMISSION	
<i>Agree</i>	EXHIBIT NO. <u>1</u>
CASE NO.	<u>3003</u>

Report 4/15/65

TOBAC FIELD

ROCK AND FLUID PROPERTIES

Producing Formation
Gross Pay, Feet
Net Pay, Feet

Bough "C"
20 - 30
10 - 15

Porosity
Water Saturation
Permeability
Range

7.3%
25% (est.)
284 md.
1 to 3,000 md.

Original Reservoir Pressure
Saturation Pressure
Original Gas in Solution, cu.ft./bbl
Reservoir Temperature
Estimated Formation Volume Factor
Oil Gravity

3031 psig @ -4620
2950 (est.)
1200 (est.)
151°
1.74
41 -44° API

Producing Mechanism

Solution gas drive with
possibly very minor
water drive along
southeast flank.

BEFORE EXAMINER NUTTER
OIL CONSERVATION COMMISSION
Appl. EXHIBIT NO. 2
CASE NO. 3003

[illegible]

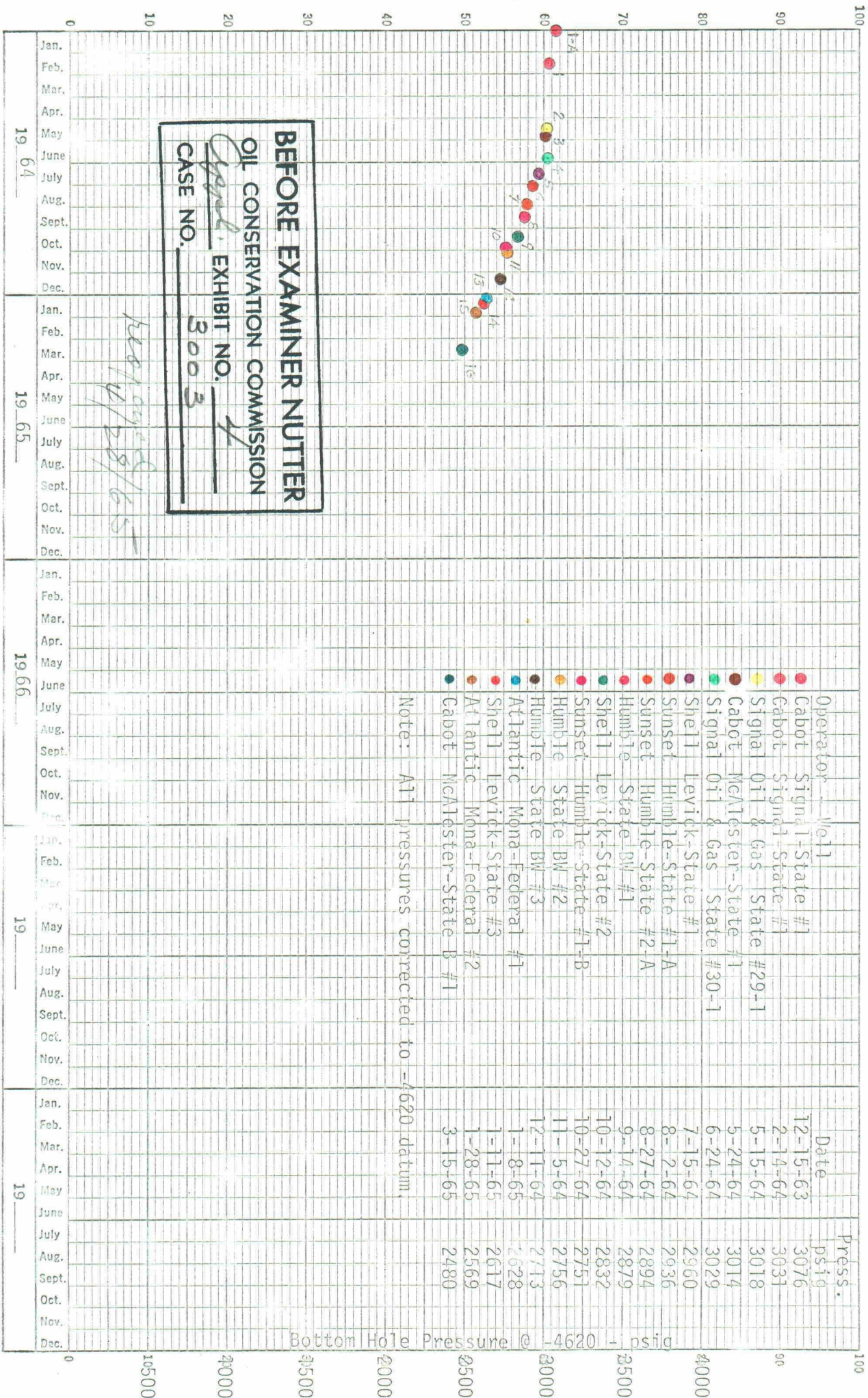
BEFORE EXAMINER NUTTER

OIL CONSERVATION COMMISSION

Cypel EXHIBIT NO. 3

CASE NO. 3003

proposed 4/28/25



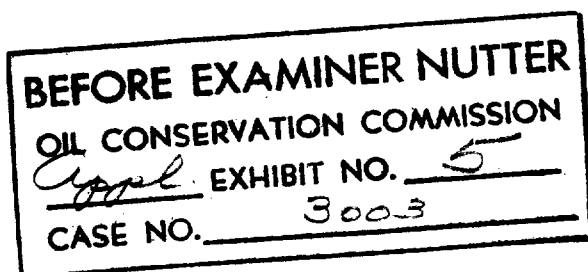
PLOT OF INITIAL BOTTOM HOLE PRESSURE VERSUS TIME

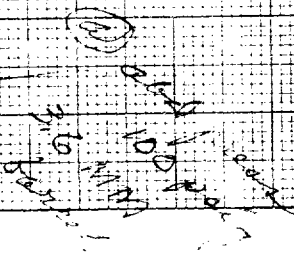
TOBAC POOL, CHAVES COUNTY

FEBRUARY, 1965 BOTTOM HOLE PRESSURES

TOBAC POOL

COMPANY LEASE	WELL NO.	LOCATION S-T-R	DATE PRESS.RUN	TIME S.I. HRS/MIN	B.H.P@ POOL DATUM
ATLANTIC REFINING CO.					
Mona Fed.	1	17-8-33	2-19	24/00	2501
Mona Fed.	2	17-8-33	2-19	25/00	2497
Mona Fed.	3	17-8-33	2-19	26/00	2497
CABOT CORPORATION					
Signal State	2	29-8-33	2-18	24/00	2409
HUMBLE OIL & RFG. CO.					
N.M. St. BW	1	20-8-33	2-17	24/00	2509
N.M. St. BW	2	20-8-33	2-17	24/30	2514
N.M. St. BW	3	20-8-33	2-17	25/00	2506
Tobac Oil Unit	2	21-8-33	2-17	25/00	2446
Tobac Oil Unit	3	20-8-30	2-17	24/30	2512
INGRAM, TOM L.					
Garretson	1	25-8-32	2-20	24/00	3150
SHELL OIL COMPANY					
Levick	1	20-8-33	2-17	51/00	2495
SIGNAL OIL & GAS CO.					
State E	1	29-8-33	2-18	25/00	2490
SUNSET INTERNATIONAL PET. CORP.					
Humble State A	1	21-8-33	2-18	50/00	2470
Humble State A	2	21-8-33	2-18	51/00	2449
Humble State B	1	21-8-33	2-18	52/00	2440





OIL RECOVERY CALCULATIONS

Indicated Ultimate Primary Recovery
from main portion of Tobac Field
by Pressure-Cumulative Production Curve*

3,600,000 Bbl

*Does not include development in
Sections 24 and 25, T8S, R32E.

Indicated average per well Ultimate
Primary Recovery from main portion of
Tobac Field developed on 80-acre spacing**

133,300 Bbl

**Based upon 27 current completions
excluding wells in Sections 24 and 25,
T8S, R32E, and Sections 31 and 32, T8S, R33E.

BEFORE EXAMINER NUTTER	
OIL CONSERVATION COMMISSION	
<i>Case</i>	EXHIBIT NO. <u>7</u>
CASE NO.	<u>3003</u>

reopened 4-28-56

DRILLING ECONOMICS

FLOWING WELL*

<u>Income</u>	<u>40 acres</u>	<u>80 acres</u>
Recoverable oil, bbl	66,700	133,300
Operator's Net Recoverable Oil (37.5%)	58,363	116,638
Operator's Gross Income @ \$2.95/bbl**	\$172,171	\$344,082
 <u>Costs</u>		
Drilling and Completion (flowing well)		\$115,000
Flow Line and Tank Battery		11,000
Total Well and Battery Cost		\$126,000
Operating Cost (\$3,000/well/year) - 5 years		\$ 15,000
Total Drilling, Completing and Operating Cost		\$141,000
 Before Tax Profit	 \$ 31,171	 \$203,082
 Before Tax Profit to Investment Ratio	 0.25	 1.61

* Pumping well costs \$20,000 additional.

**Includes 9¢/bbl for casinghead gas.

BEFORE EXAMINER NUTTER	
OIL CONSERVATION COMMISSION	
<i>Agan</i>	EXHIBIT NO. <u>8</u>
CASE NO. <u>3003</u>	

received 4/23/55