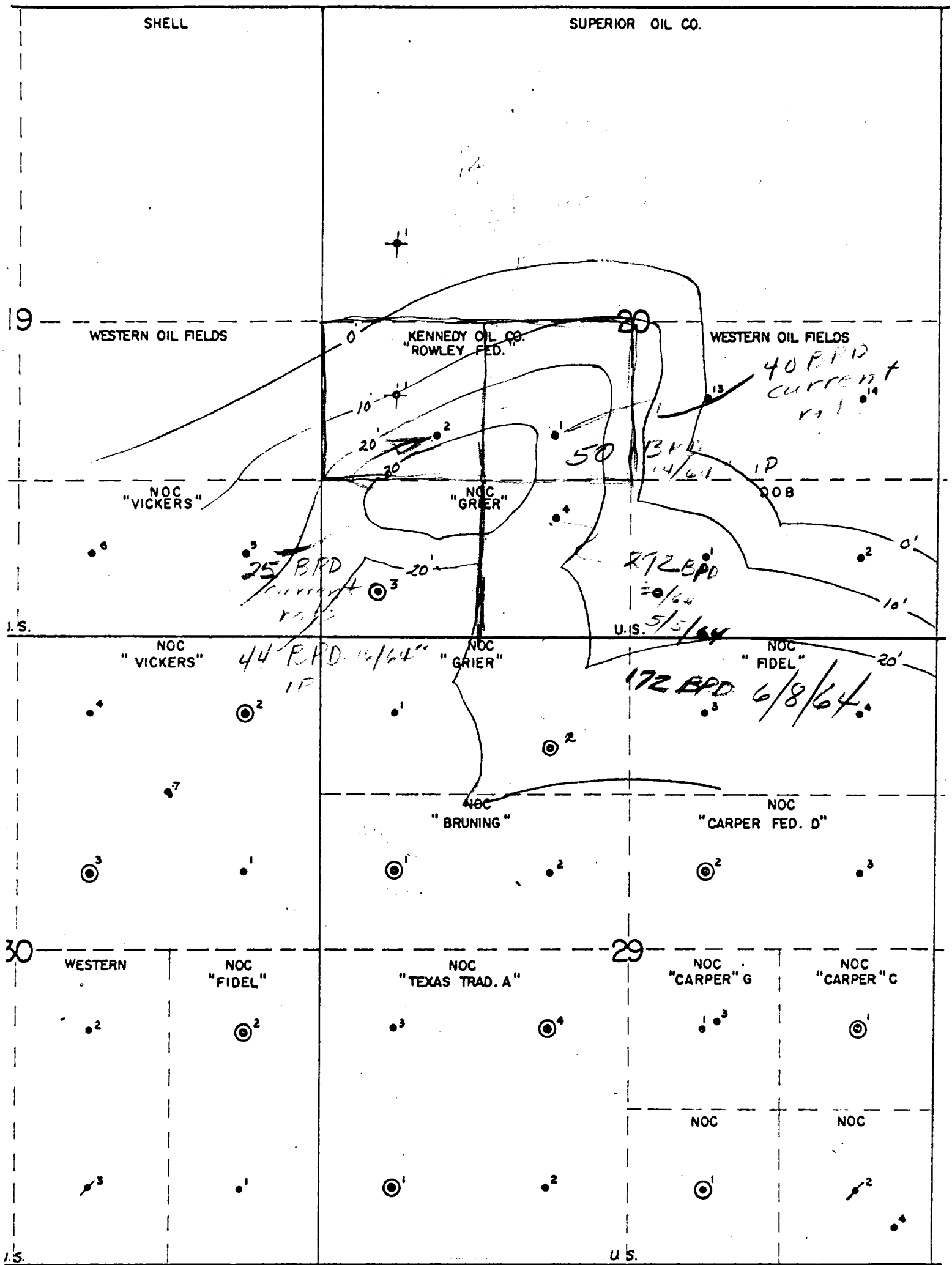


PREMIER SAND
ISOPACH

F



SQUARE LAKE POOL
T-16S R-31E
EDDY CTY., N.M.

Contour Interval 10'

BEFORE EXAMINER NUTTER

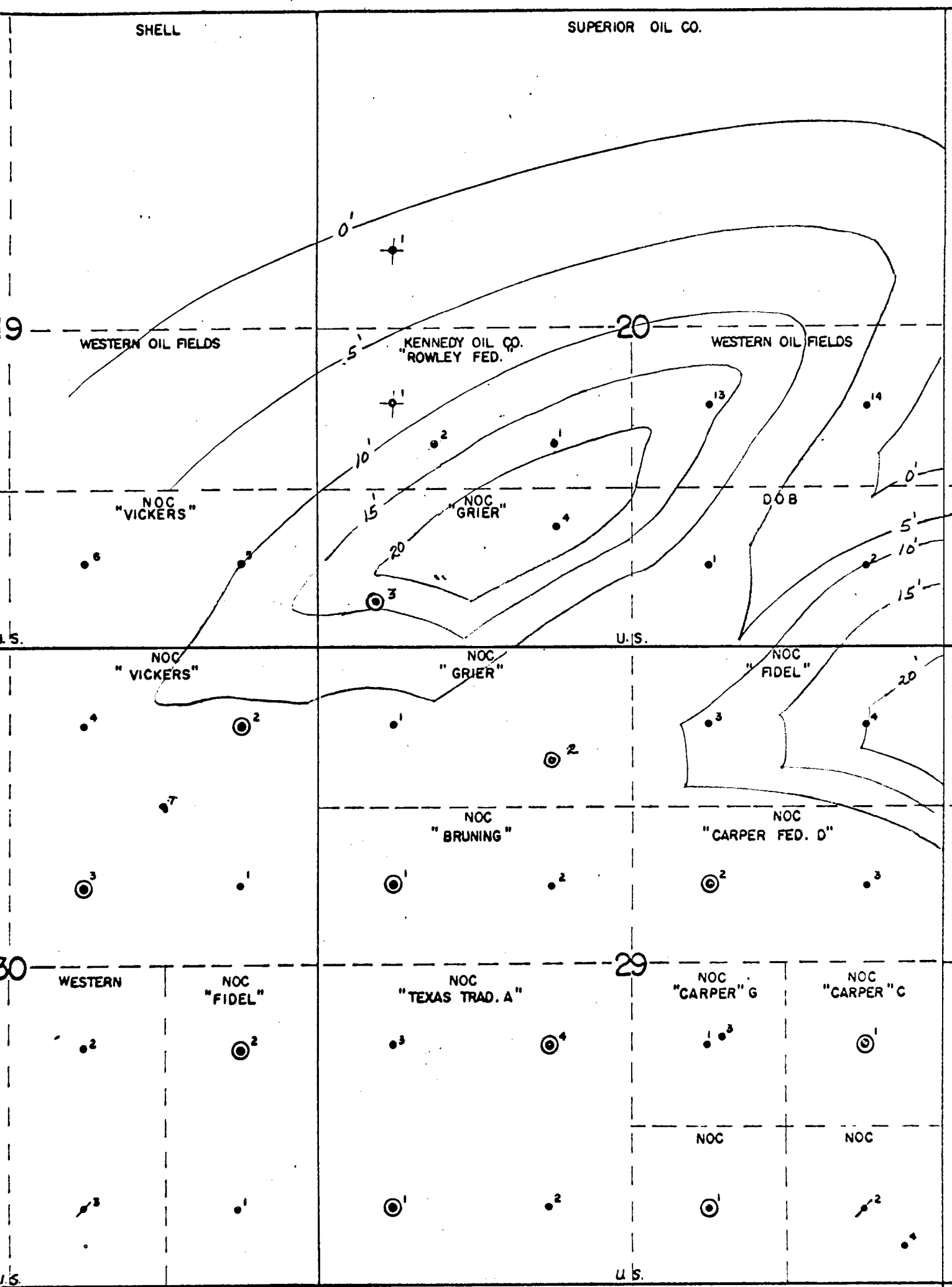
OIL CONSERVATION COMMISSION

EXHIBIT NO. 5

CASE NO. 3038

LOVINGTON SAND
ISOPACH

F



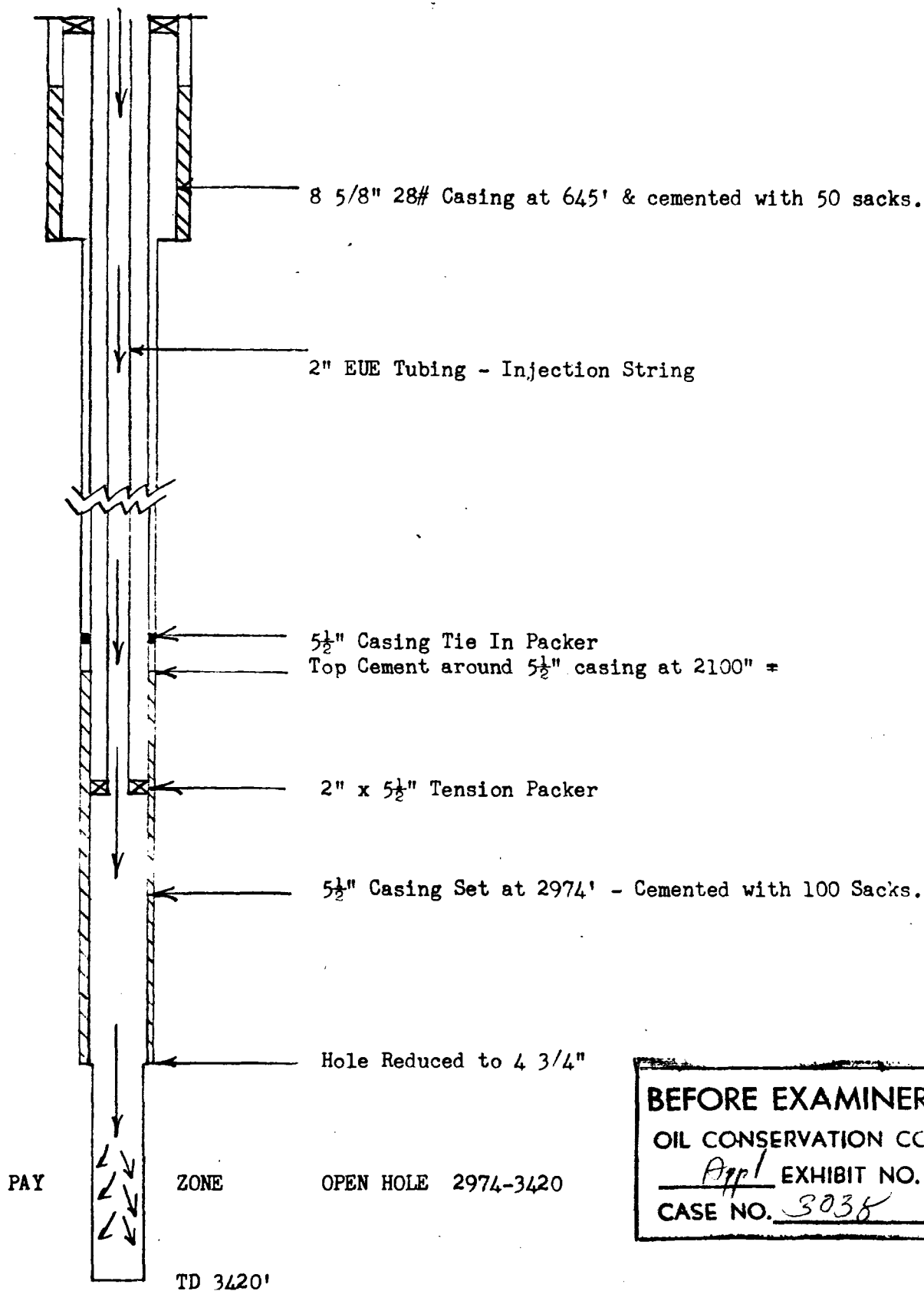
Contour Interval 5'

SQUARE LAKE POOL
T-16S R-31E
EDDY COUNTY, N.M.

BEFORE EXAMINER NUTTER
OIL CONSERVATION COMMISSION
APPL EXHIBIT NO. 6
CASE NO. 3038

SCHEMATIC DRAWING OF INJECTION WELL

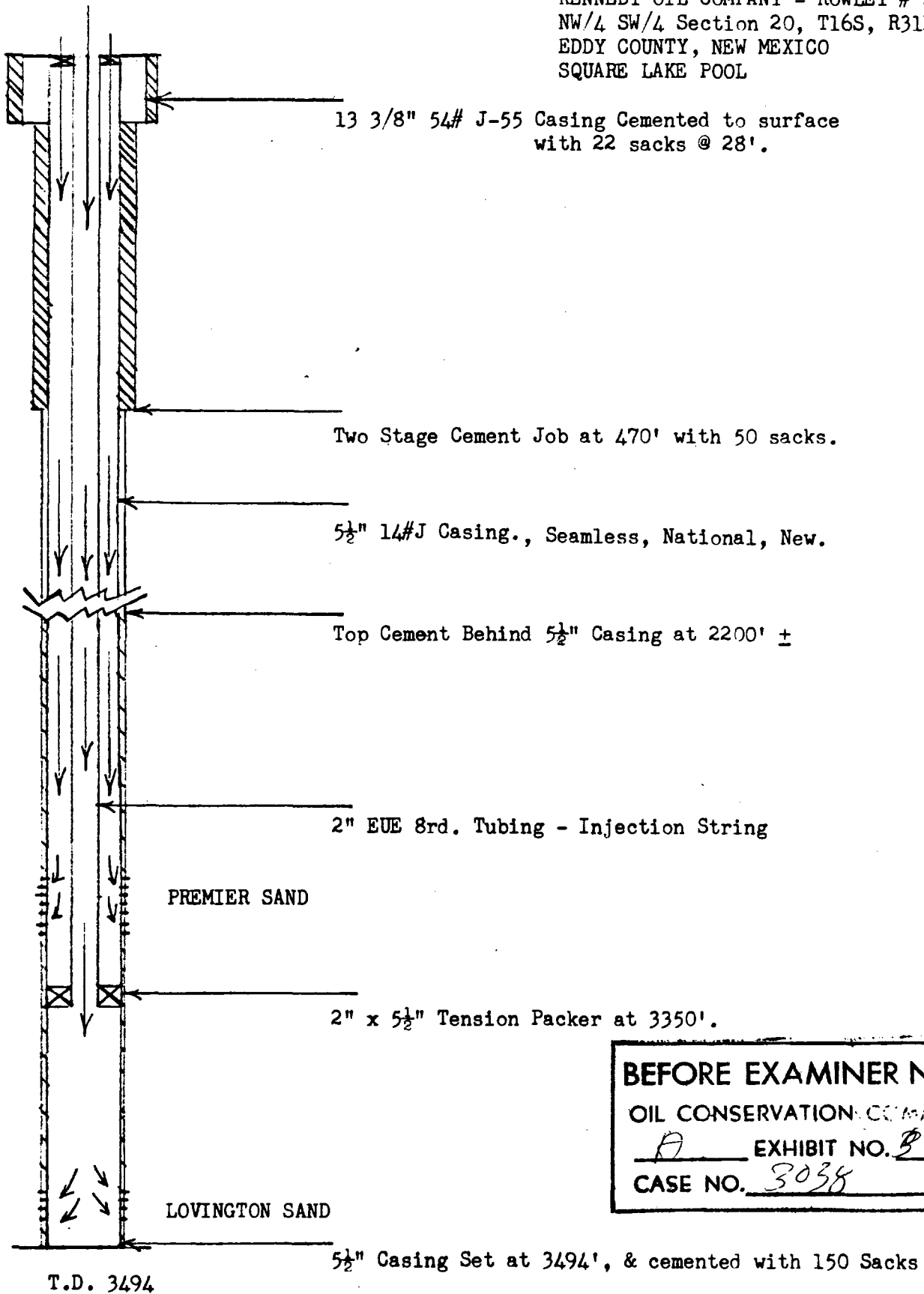
KENNEDY OIL COMPANY - ROWLEY #1-L
NW/4 SW/4 Section 20, T16S, R31E
EDDY COUNTY, NEW MEXICO
SQUARE LAKE POOL



BEFORE EXAMINER NUTTER
OIL CONSERVATION COMMISSION
App'l EXHIBIT NO. 2
CASE NO. 3038

SCHEMATIC DRAWING OF INJECTION WELL

KENNEDY OIL COMPANY - ROWLEY # 2
NW/4 SW/4 Section 20, T16S, R31E
EDDY COUNTY, NEW MEXICO
SQUARE LAKE POOL



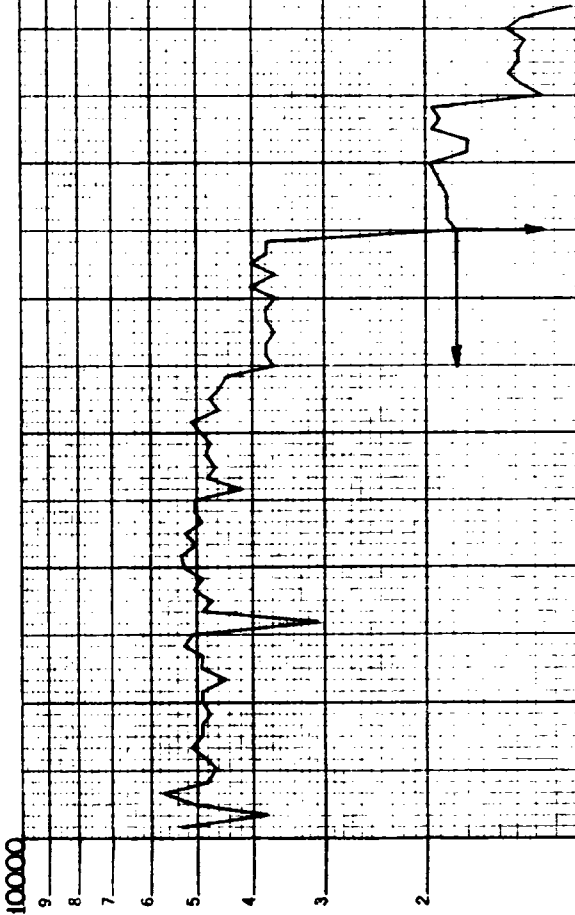
BEFORE EXAMINER NUTTER

OIL CONSERVATION COMMISSION

A EXHIBIT NO. B 8

CASE NO. 3038

OIL PRODUCTION
BBL / MO.



SCF / BBL

10000

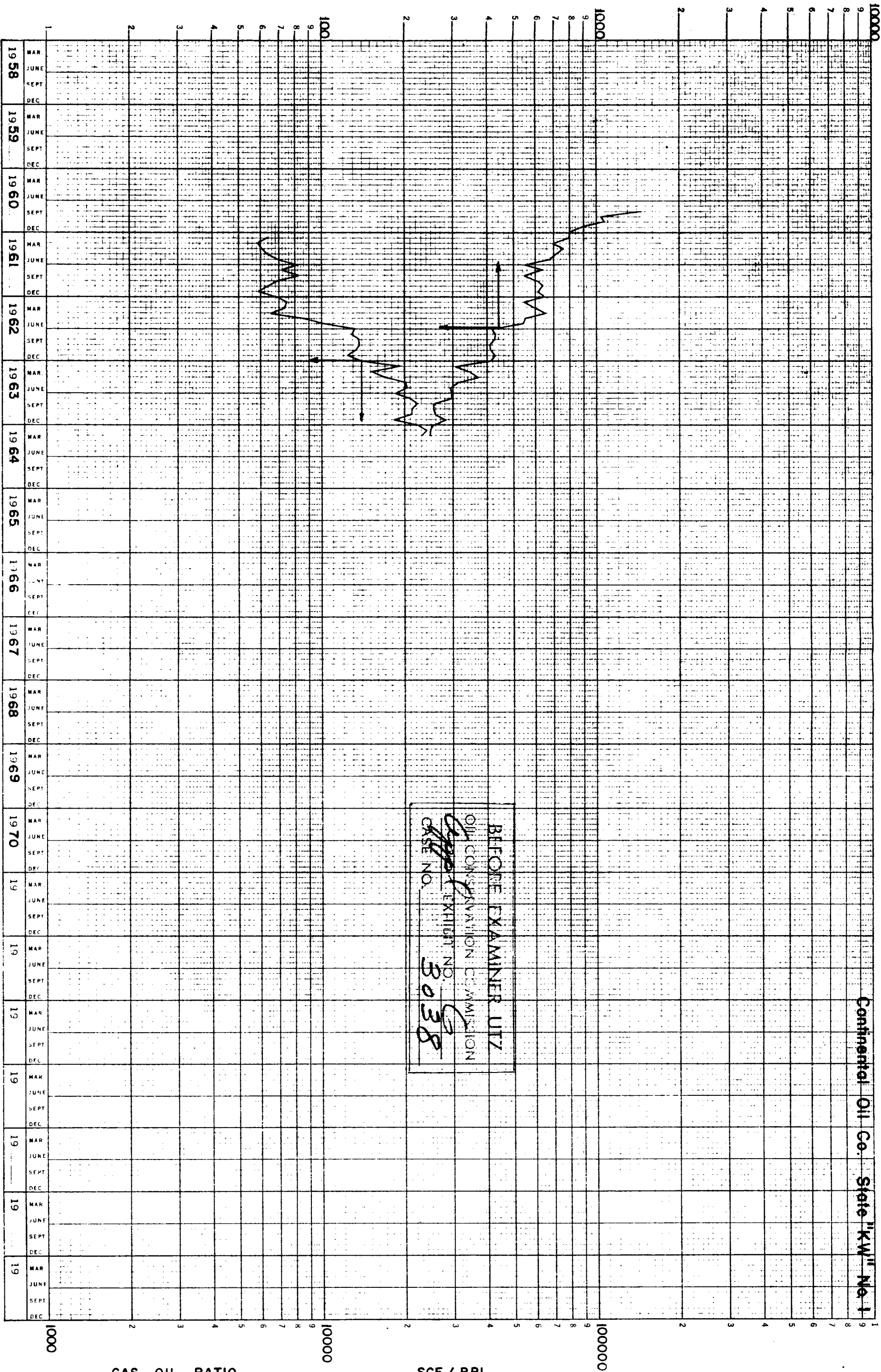
GAS OIL RATIO

1000

John H. Trigg Co. Federal "J" No. 1

BEFORE EXAMINER UTZ
OIL CONSERVATION COMMISSION
EXHIBIT NO. 5
CASE NO. 3038

OIL PRODUCTION BBLS / MO.



GAS OIL RATIO

SCF / BBL