

NO. 172 TWENTY YEARS BY MONTHS & YEARS
DEFORE EXAMINER NUTTER
OIL CONSERVATION COMMISSION
CASE NO. 312 EXHIBIT NO. 3

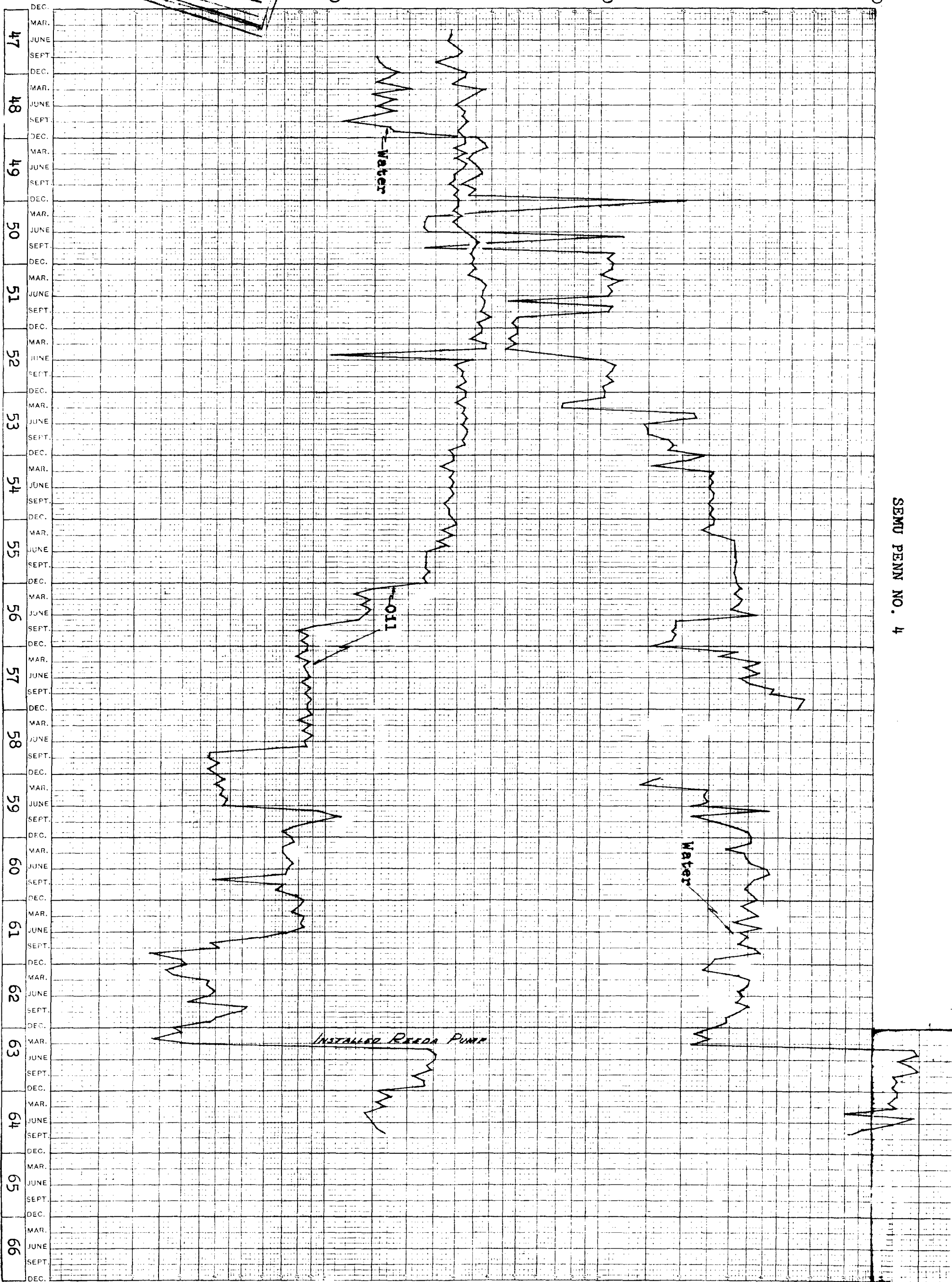
Barrels Per Month

1,000

10,000

100,000

SEMU PENN NO. 4



BEFORE EXAMINER NUTTER

OIL CONSERVATION COMMISSION

EXHIBIT NO. 4

CASE NO. 3156

Barrels Per Month

1,000

10,000

100,000

SEMU PENN NO. 2

