

HUMBLE OIL & REFINING COMPANY

No. 20 NEW MEXICO STATE "S"

2 - 22 S - 37 E (E)

PERMIAN

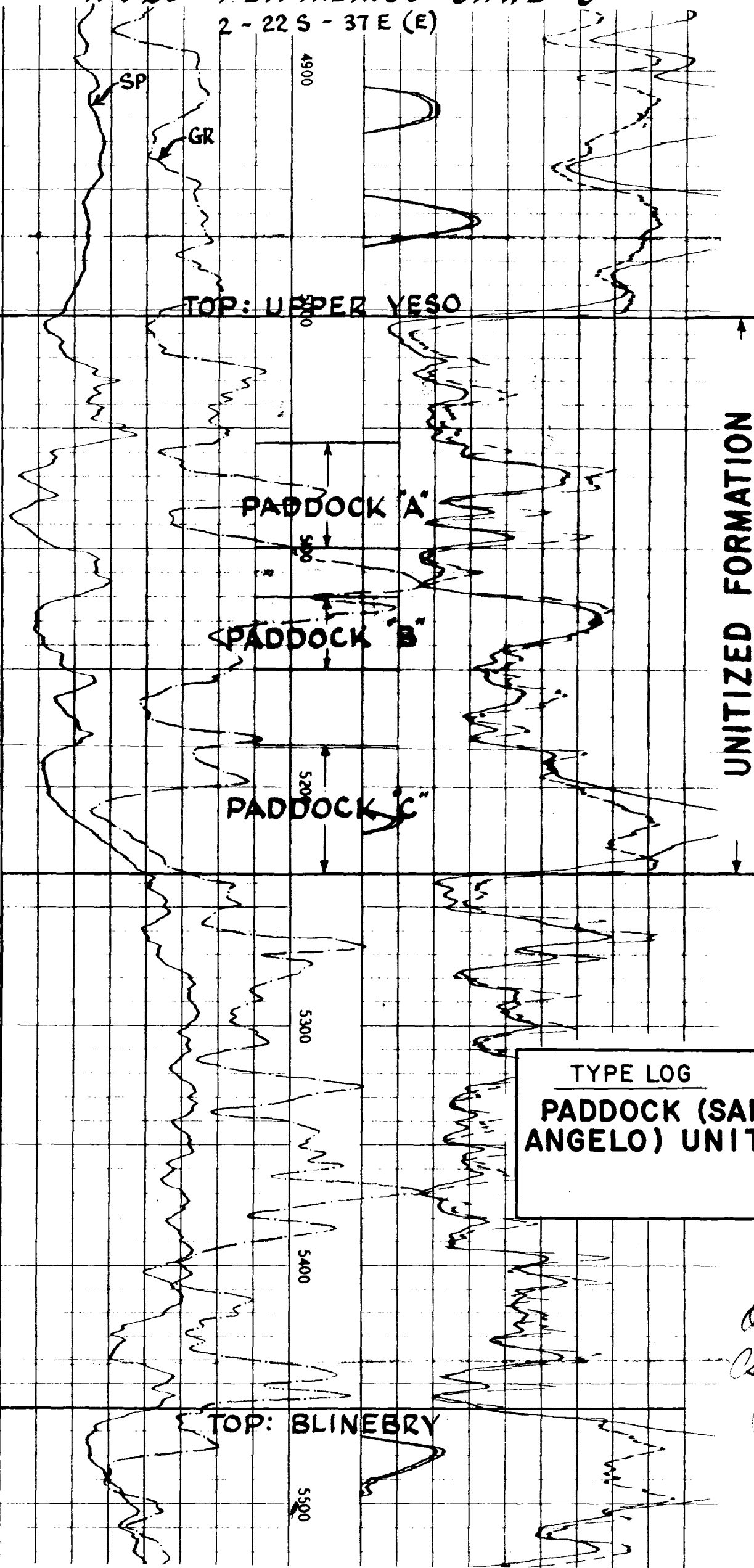
LEONARDIAN

SAN ANGELO

GUADALUPIAN

SAN ANDRES

CLEAR FORK



UNITIZED FORMATION

TYPE LOG
Paddock (SAN
ANGELO) UNIT

Appx EX 3-A
Q 3615-3616
(3-7)