

NEW MEXICO
OIL CONSERVATION COMMISSION

file
4482

FIELD TRIP REPORT

Date 12/11/70

Name of Employee R. L. Stamets

Time of Departure 8:00 a.m. Time of Return 3:35 p.m.

Miles Travelled 198

In the space below please indicate purpose of trip and duties performed, listing wells or leases visited.

To Eddy County, general field inspection. To Texas Am. Oil Co.

Todd 26 Fed. Lease, G, 26-23-31, to check area. Operator has re-

quested an exception to Order R-3221. Found a windmill about ½ mile

south of the tank battery. The water well is located in a sink and

is reported to be about 300 feet deep and should produce from Triassic

red beds. A water sample was taken at the water well and at the Todd

26 Fed. water storage tank. Check P&A wells in 3-22-27 and 32-20-30.

All three O.K. Checked area around The Petroleum Corporation, Petco

State #1-P, 26-19-29, a new well completion reportedly producing 250

BWPD. Water volume did not appear to be as high as reported. However,

as water came from a free water knockout, an accurate gauge could not

be obtained.

Continued

R. L. Stamets
Employee's Signature
District # _____

Field trip continued

A sample of produced water was taken. Checked and took a sample from a stock water windmill one mile east. This well is of an unknown depth located in a sink. The topography is such that water from the oil well would not appear to drain directly toward the water well. The oil well lies just over one mile west of the potash area exempted from R-3221.

Produced oil-brine samples or injection water

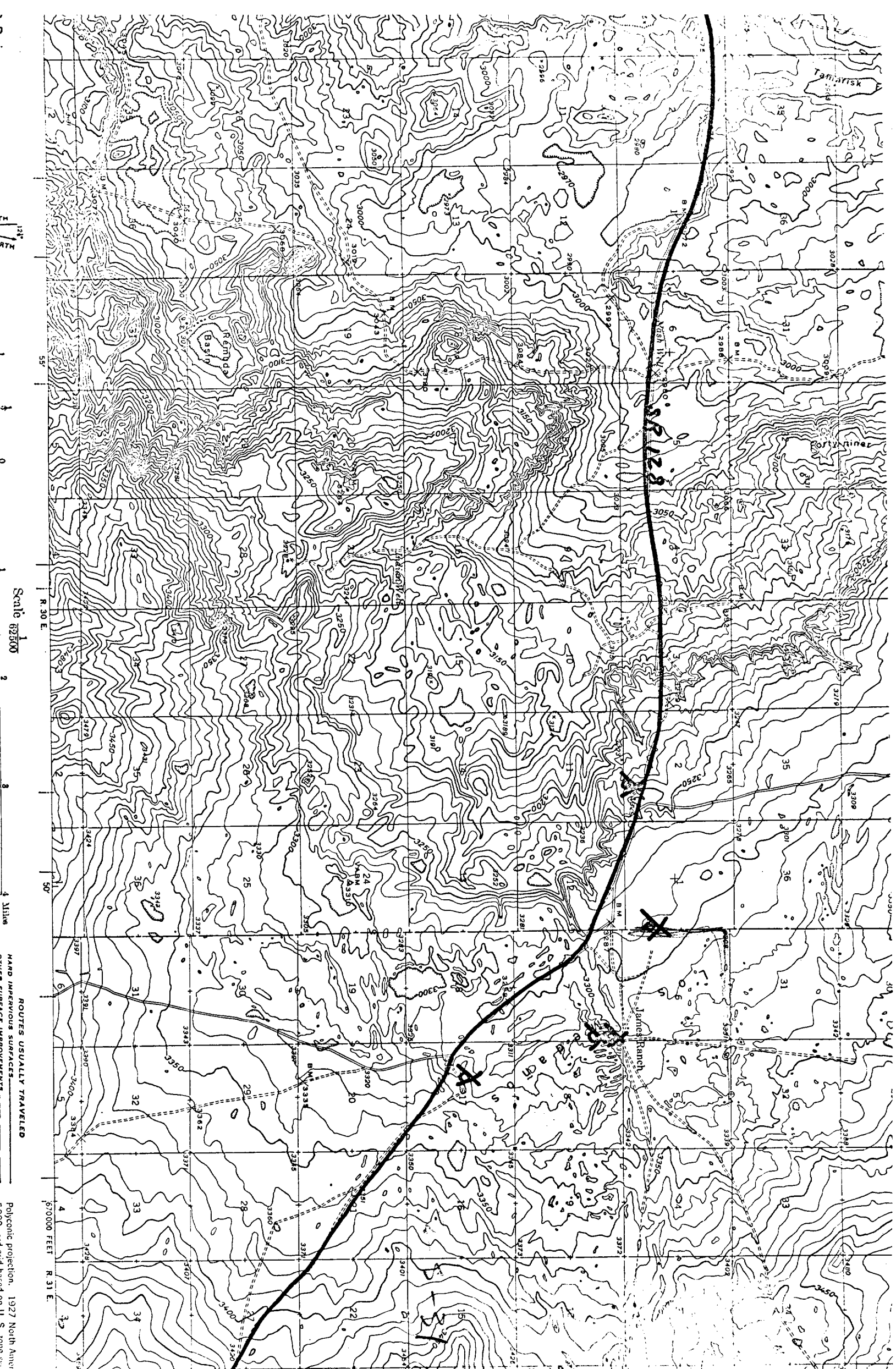
	Op'r	lease	loc	Date	Collected	504	C1	T.D.S.	Sample from
1									drain line
6	D. J. C. Ritchie	Wichita	D 21	26	27	3	9050	22320	Sample from drain line
	S. P. 1/4	Chans	A 5-17	30	6	25	44020	106500	500D production. Collected by 46
	Neuhaus	14545	112	18-29	4	2	24000	52100	Injection plant
	Frederick	Grier	F 31-16-31	4	10	70	9910	11600	He S high
	Roger C. Hawks	Digger Draw	D 30-19-25	7	15	70	1880	8820	Water black. Filtered twice
"	"	"	"	10	29	70	2045	5732	clear
"	"	"	"	10	30	70	2244	6510	clear
"	"	"	"	10	31	70	2258	6510	clear
"	"	"	"	11	2	70	2180	6510	Filtered
	Todd C. Federal	Todd C. Federal	G 26-23-31	12	11	70	68900	130200	Sampled from point (25' below top of 34' zone)
	P. V. Co. State	P. V. Co. State	P 26-19-29	12	11	70	64600	112600	Draw line

Non oil related water samples

cc	Location	Use	Date Collected	Date Held	SO ₄	Cl	T. D. S.	
11	NW 35 17 29	stock water	4 2 69	4 7 69	460	4400	12650	
11	H 27 20 28	"	4 4 69	" "	500	92	2420	Reported 80 ft deep
11	C 13 20 28	Domestic & Irrig. No. 1	" "	" "	784	607	3440	
11	B 21 18 28	Stock	4 10 69	4 16 69	1172	124	132	
11	M 22 26 27	Stock	3 24 69	3 31 69	2240	1420	5670	
11	SW 30 14 28	"	5 20 69	5 26 69	2440	60	No T.S. V	
11	SE 36 14 28	"	5 11 69	5 11 69	75	28	335	Water pumped from surface pit. Had petroleum odor. Near Phillips plant pit.
11	N 7 18 28	"	5 28 69	6 2 69	1480	130	620	
11	I 35 17 28	"	" "	" "	4000	1260	632	
11	State line	"	6 5 69	6 6 69	884	4800	14350	Sampled at State line boat ramp
11	C 8 26 29	Stock	6 5 69	6 6 69	1328	8110	22450	Sampled at mid-river from Cl Pass bridge
11	M 10 18 29	"	8 8 69	8 14 69	464	2030	5670	Tish says "contaminated unless from Tishler"
11	F 24 18 29	"	1 31 69	8 14 69	112	50	1125	
11	I 3 24 28	None	12 11 69	12 29 69		710	2880	Spring had not been seen or used since visit. A white wash of mosses seen. Apparently intermingled in nature. Taste good.
11	P 2 23 30	Stock	12 11 70	12 14 70		589	3720	Water used in area 2000-3000' deep
11	SE 26 23 31	"	12 11 70	12 14 70		150	2230	Water apparently used for stock and domestic supply lines
11	P 25 19 29	"	12 11 70	12 14 70		124	1770	

Spring had not been seen on earlier visits. A 4 mile west of Messer Sec 2
 Apparently water with T in nature. Taste! good.
 water apparently used for stock and domestic supplies

Water pumped from surface pit.
 Had petroleum odor. Near Phillips plant pit.
 Sampled at State line best pump
 Sampled at mid-river from C1 Pass bridge
 Johnsons contaminated well from nearby



Scale 1/62,500

ROUTES USUALLY TRAVELED

Polycyclic projection, 1927 North American Datum