

BEFORE EXAMINER NUTTER
OIL CONSERVATION COMMISSION
MESA EXHIBIT NO. 8
CASE NO. 5081-5082

MESA PETROLEUM CO.

EXHIBIT NO. _____

NORTH SHOE BAR WOLFCAMP

PRODUCTION CURVES

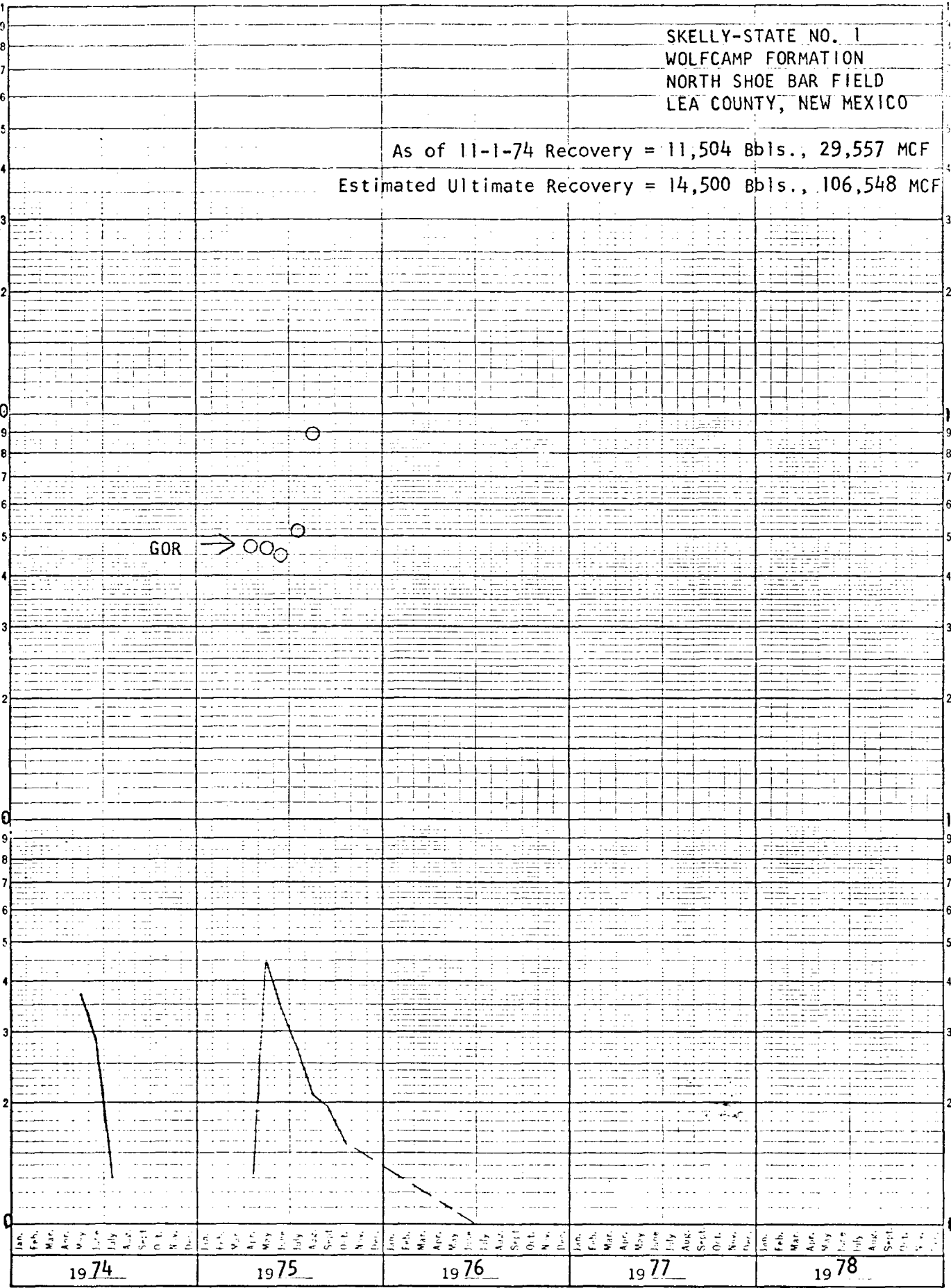
SKELLY-STATE NO. 1
WOLFCAMP FORMATION
NORTH SHOE BAR FIELD
LEA COUNTY, NEW MEXICO

As of 11-1-74 Recovery = 11,504 Bbls., 29,557 MCF
Estimated Ultimate Recovery = 14,500 Bbls., 106,548 MCF

OIL PRODUCTION, BOPD

GOR, SCF/STB

RE 5 YEARS BY MONTHS 46 6690
X 3 LOG CYCLES
MADE IN U.S.A.
KLUFFEL & ESSER CO.



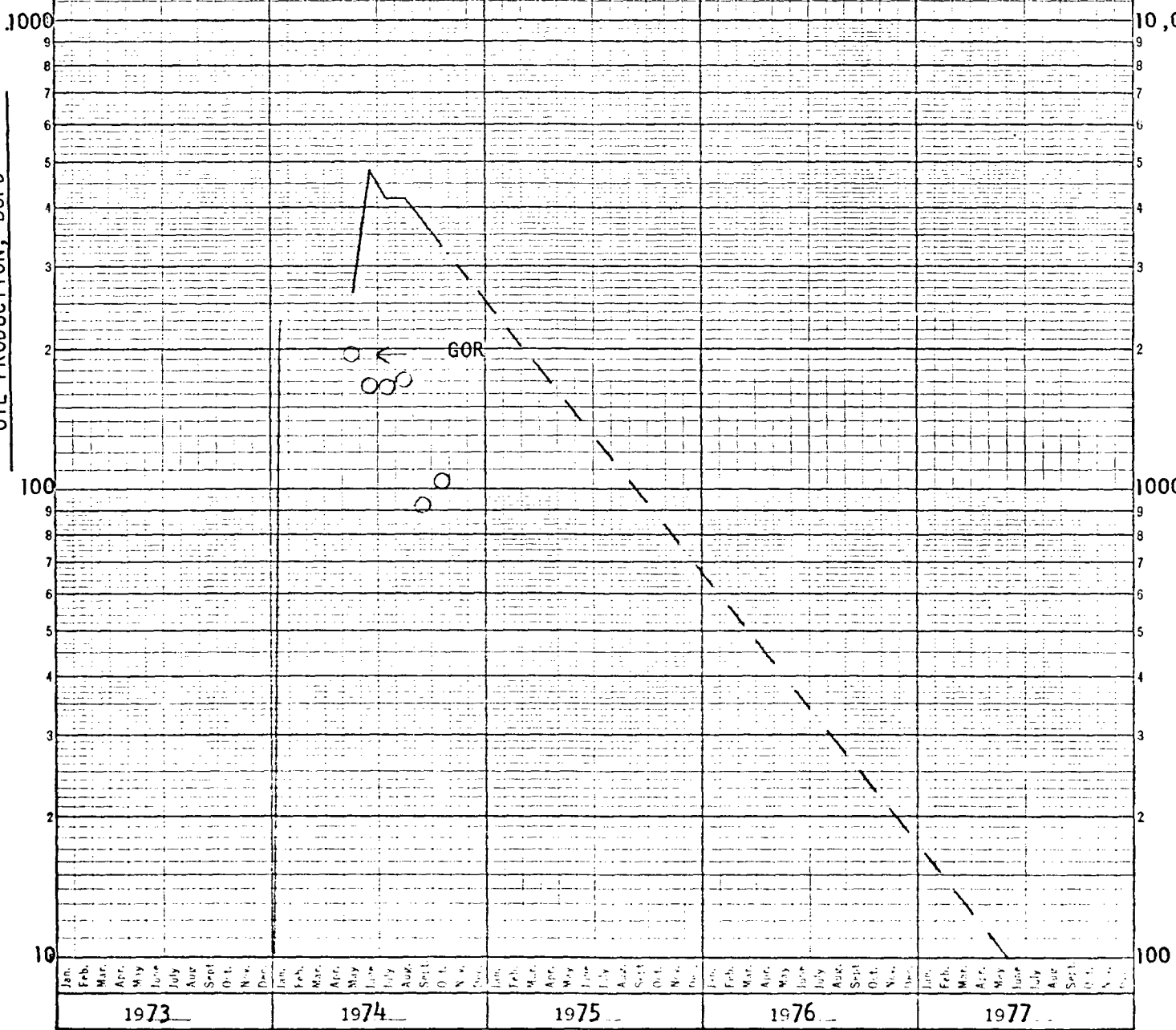
3 YEARS BY MONTHS 46 6690
X 3 LOG CYCLES
MADE IN U.S.A.
KLUFFEL & ESSER CO.

OIL PRODUCTION, BOPD

GOR, SCF/STB

GILMORE NO. 1
WOLFCAMP FORMATION
NORTH SHOE BAR FIELD
LEA COUNTY, NEW MEXICO

As of 11-1-74 Recovery = 76,982 Bbls., 104,957 MCF
Estimated Ultimate Recovery = 164,000 Bbls., 1,202,372 MCF



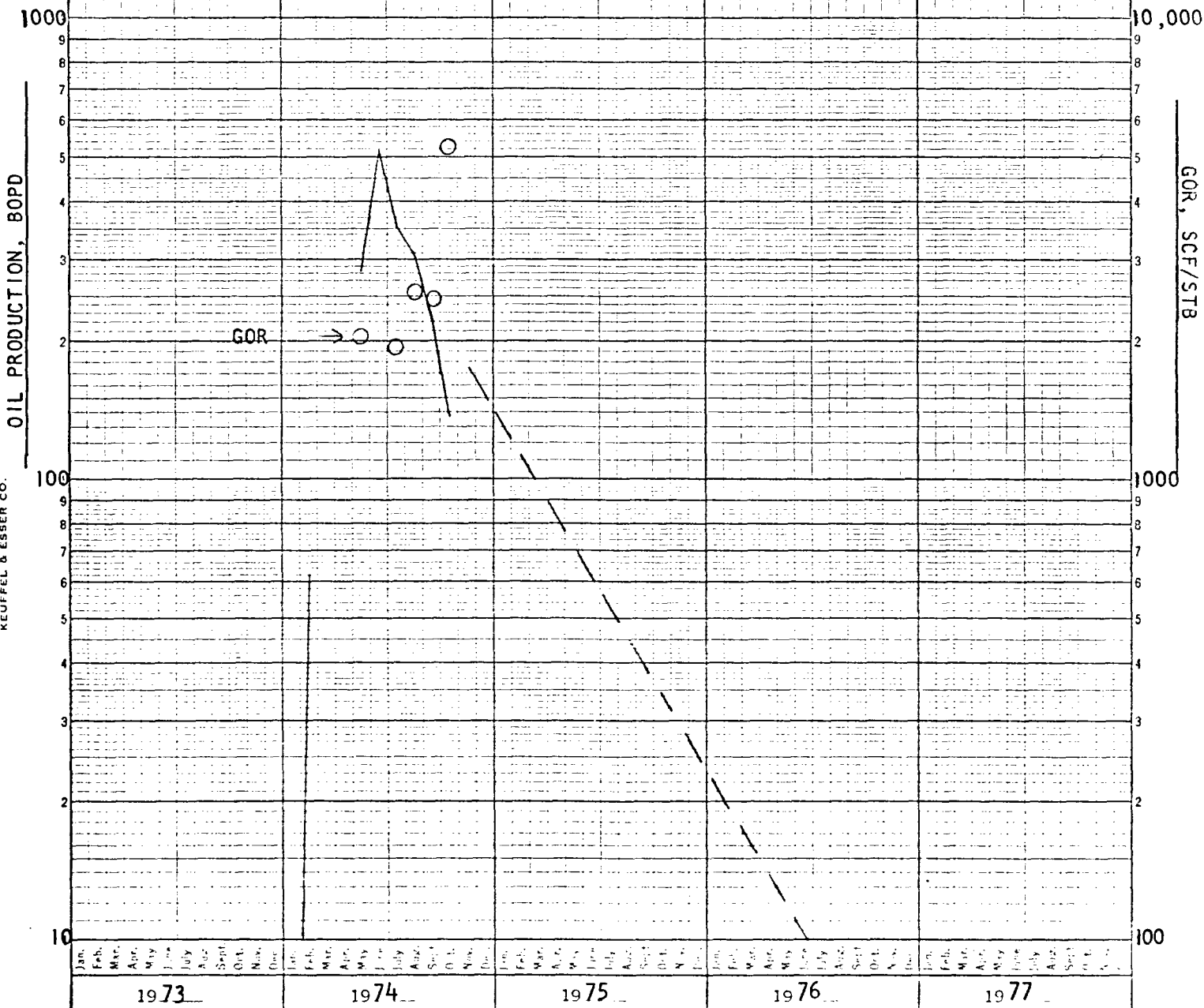
CHAMBERS NO. 1
WOLFCAMP FORMATION
NORTH SHOE BAR FIELD
LEA COUNTY, NEW MEXICO

As of 11-1-74 Recovery = 56,924 Bbls., 128,867 MCF
Estimated Ultimate Recovery = 92,000 Bbls., 674,434 MCF

OIL PRODUCTION, BOPD

GOR, SCF/STB

GOR



1973

1974

1975

1976

1977