

(3) That applicant further seeks the establishment of an administrative procedure whereby the above wells could be relocated and other similar unorthodox locations approved without notice and hearing.

(4) That wells at said unorthodox locations will better enable applicant to produce the oil underlying the ^{Grayburg-Jackson} ~~formation~~
Unit Area.

(5) That no offset operator objected to the proposed unorthodox locations.

(6) That approval of the subject application will afford the applicant the opportunity to produce its just and equitable share of the oil in the subject pool, will prevent the economic loss caused by the drilling of unnecessary wells, avoid the augmentation of risk arising from the drilling of an excessive number of wells, and will otherwise prevent waste and protect correlative rights.

IT IS THEREFORE ORDERED:

(1) That 12 unorthodox oil well locations for the San Andres formation are hereby approved for wells to be located in the Grayburg-Jackson Unit, Township 17 South, Range 30 East, ^{NMPM,}
Grayburg-Jackson Pool,
Eddy County, New Mexico, as follows:

Section 13:

2615 feet from the south line and 1345 feet from the east line.

2415 feet from the south line and 2415 feet from the west line.

2615 feet from the north line and 1295 feet from the west line.

• 1295 feet from the south line and 1295 feet from the east line.

1295 feet from the south line and 2615 feet from the east line.

1295 feet from the south line and 1345 feet from the west line.

1295 feet from the south line and 25 feet from the west line.

200 feet from the south line and 1345 feet from the east line.

25 feet from the south line and 1345 feet from the west line.

Section 14:

2500 feet from the north line and 25 feet from the east line.

Section 24:

25 feet from the north line and 25 feet from the west line.

1120 feet from the north line and 1345 feet from the west line.

100,000

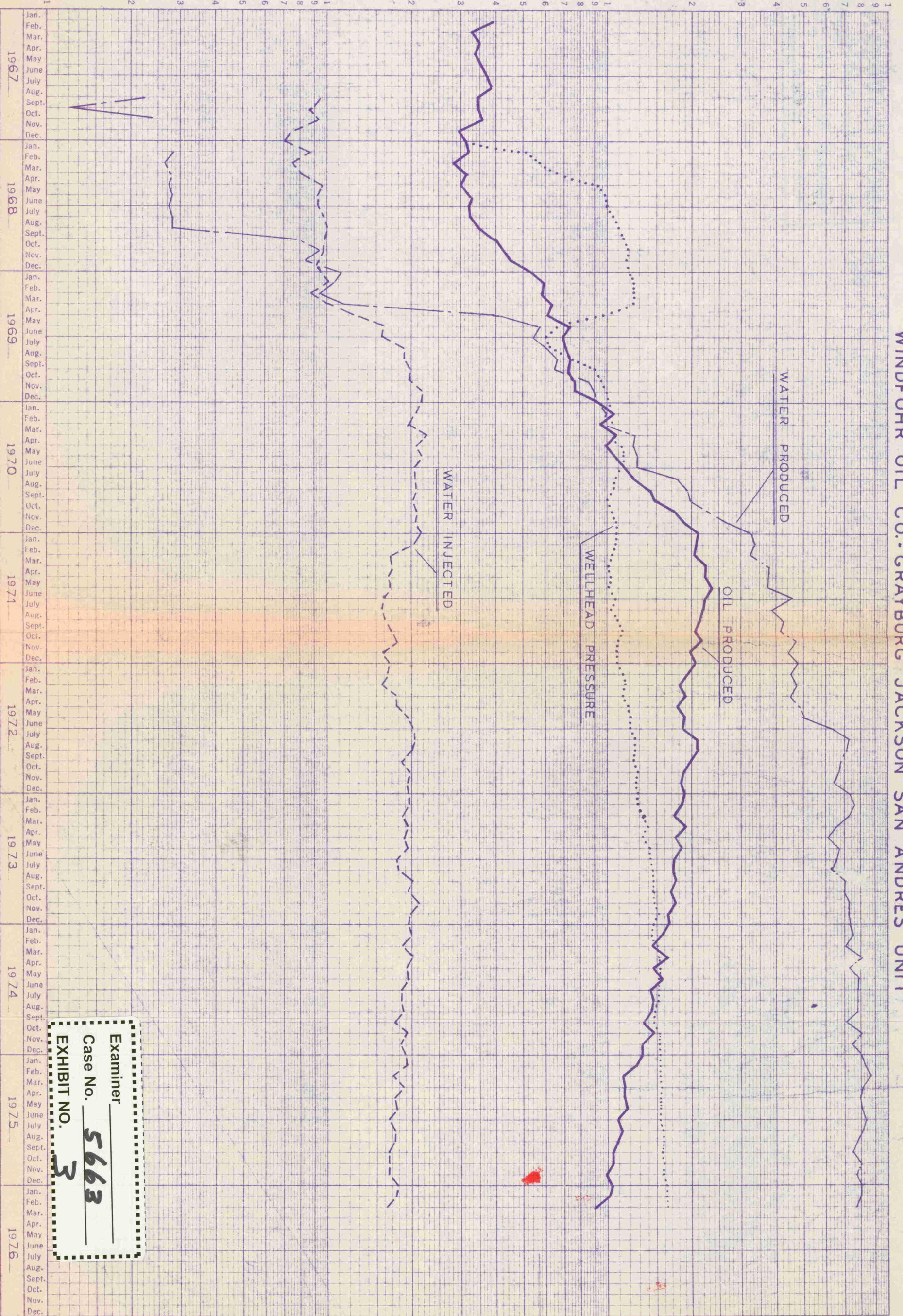
10,000

1,000

OIL & WATER PRODUCTION

100

WINDFOHR OIL CO.-GRAYBURG JACKSON SAN ANDRES UNIT



Examiner _____
Case No. **5663**
EXHIBIT NO. **3**

WATER INJECTED

WELLHEAD PRESSURE