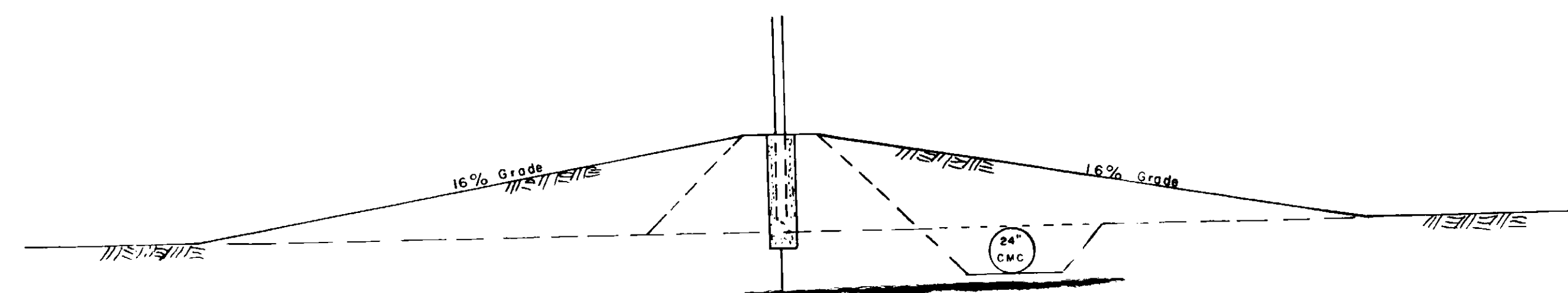
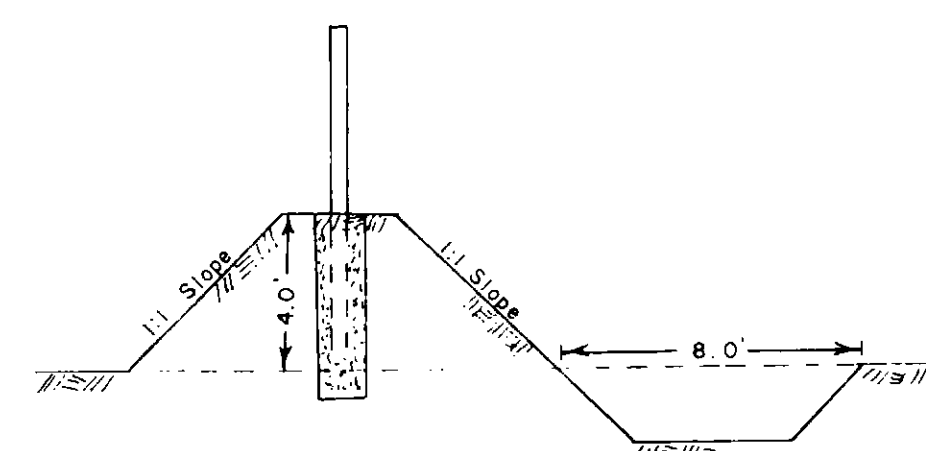


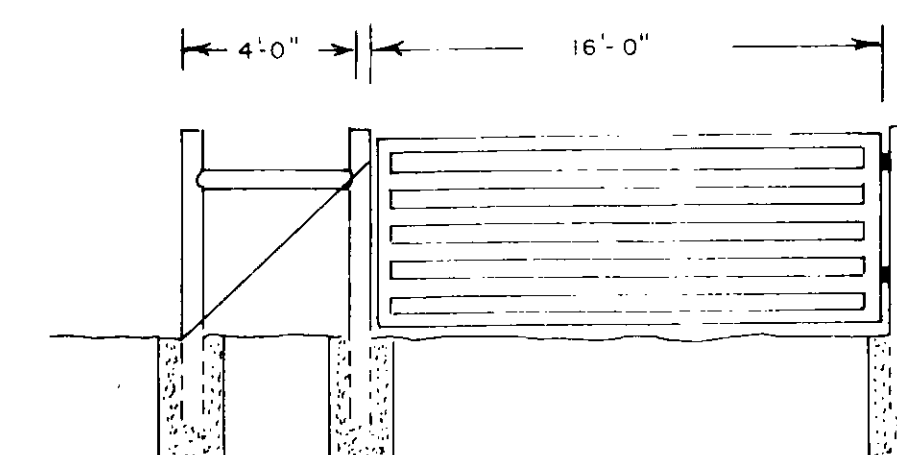
Scale - 1" = 50'



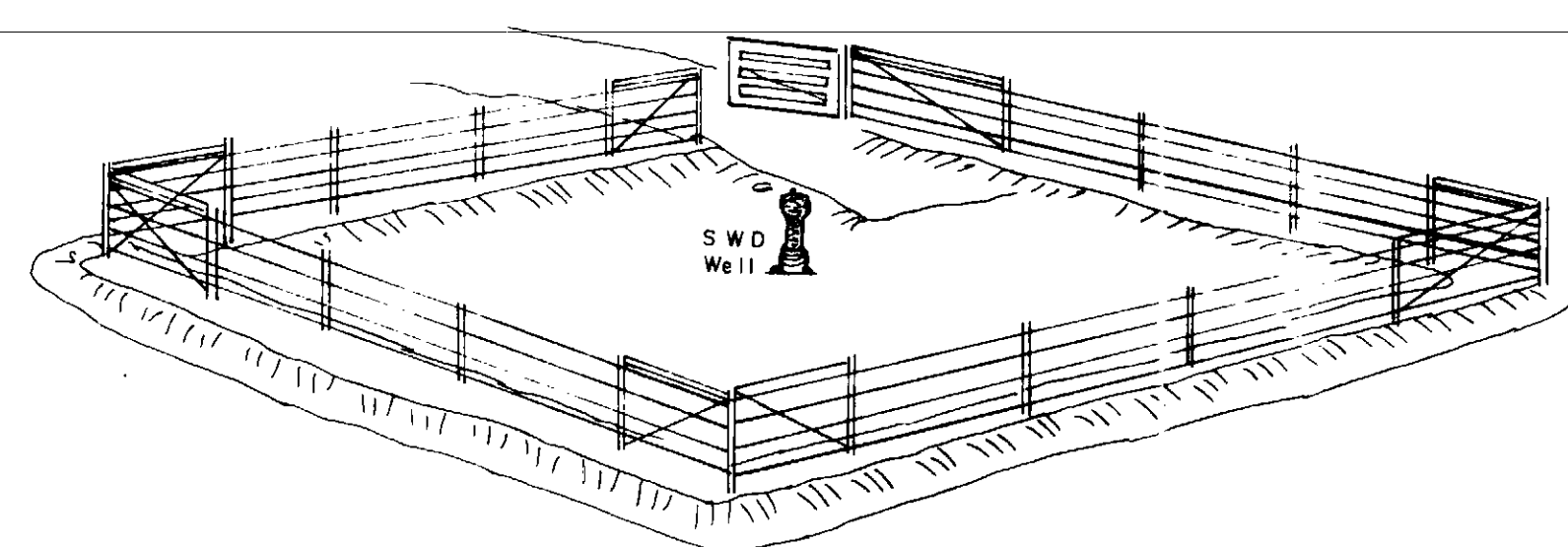
TYPICAL SECTION
DRIVING RAMP



TYPICAL SECTION
LEVEE & DITCH



GATE DETAIL



GENERAL SCHEME

BEFORE EXAMINER NUTTER
OIL CONSERVATION COMMISSION
EXHIBIT NO. 4
CASE NO. 5708

ROGER C. HANKS

PROPOSED LEVEE, FENCE & DITCH AROUND THE
KING DISPOSAL WELL N^o 1 LOCATED IN THE NE¹/₄
OF THE NW¹/₄ SECTION 9, TOWNSHIP 20 SOUTH,
RANGE 25 EAST, N.M.P.M., EDDY CO., NEW MEXICO

JOHN W. WEST ENGINEERING CO.
CONSULTANTS

Surveyed By Z.R.	Drawn By M.T.	Last Rev. Date	Drawing Number
Date Begin 6-18-76	Date 6-21-76	File No.	
Date End 6-18-76	Checked By J.W.	Sheet 1 of 1	