

Case No. 5975

BETTIS, BOYLE & STOVALL
P. O. BOX 1240
GRAHAM, TX 76450
FAX 817-549-7405 OR PHONE 817-549-0780

OIL CONSERVATION DIVISION
RECEIVED

'92 AUG 12 AM 8 50

August 10, 1992

Oil Conservation Division
P. O. Box 2088
Santa Fe, NM 87501

Attn: Mr. David Catanach

Dear Mr. Catanach,

A recent injection profile log on our Christmas SWD #1 showed our well was not in compliance with our approval for disposal (Order No. R-5489) dated July 19, 1977. Further investigation of our wellfile revealed problems with casing integrity in the past (squeezed 2 holes in 1976). Since this well is almost 40 years old (drilled in 1953) it is our proposal to run a full string of 4-1/2" casing and cement to surface using a formation packoff shoe set inside 7" @ 2950'.

We are requesting approval to do so as soon as possible so that we may return this well to operation with as little downtime as possible. If you have any questions please feel free to call.

Sincerely,

BETTIS, BOYLE & STOVALL

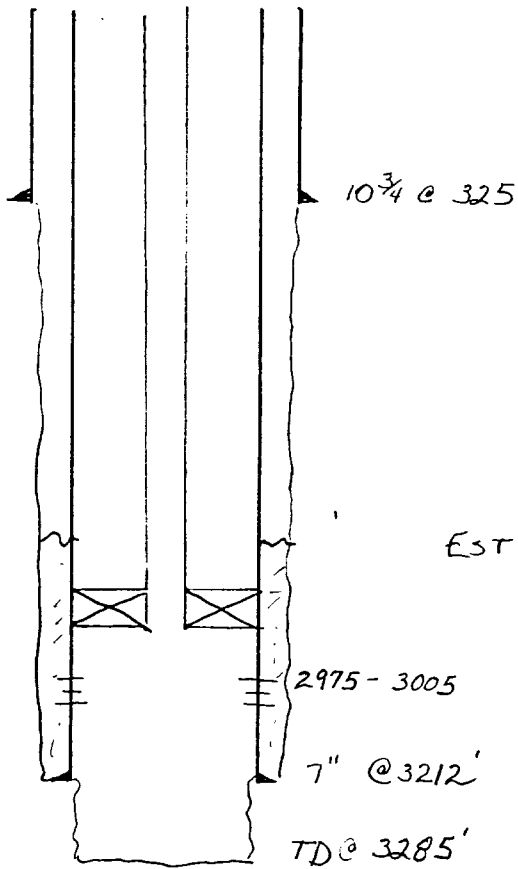
Steve Gray
Petroleum Engineer

SG:vu

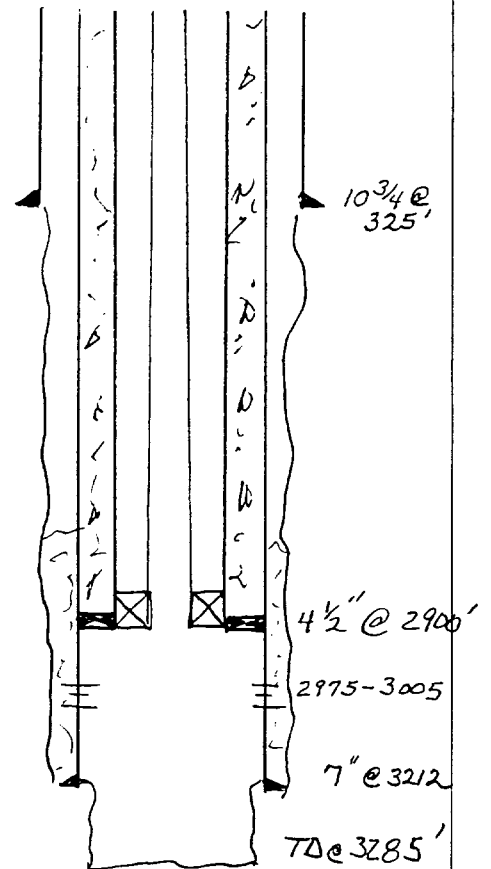
cc: Jerry Sexton
Oil Conservation Division
P. O. Box 1980
Hobbs, NM 88420

BETTIS, BOYLE, & STOVALL
ANNIE CHRISTMAS SWD #1
SEC 20, T25S, R37E
LEA CO, NM

CURRENT WELLBORE
CONDITION



PROPOSED WELLBORE
CONDITION



EST TOC @ 2600'

OIL CONSERVATION DIVISION
RECEIVED
BETTIS, BOYLE & STOVALL
P. O. BOX 1240
GRAHAM, TX 76450
'92 AUG 27 FAX 817-549-7405 OR PHONE 817-549-0780

August 24, 1992

Oil Conservation Division
P. O. Box 2088
Santa Fe, NM 87504-2088

Attn: Mr. Ben Stone

Re: Christmas #1 SWD
Sec. 20, T25S, R37E
Lea Co., NM

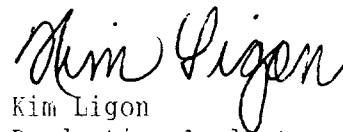
Dear Ben,

In reference to your telephone conversation with Mr. Rick Taylor, Supt. of our field operations in New Mexico, please find enclosed a copy of the pump-in tracer log ran on the above subject well.

We have also sent a copy to Mr. Jerry Sexton of your Hobbs office.

Sincerely,

BETTIS, BOYLE & STOVALL



Kim Ligon
Production Analyst

KL:vn